



PUBLIC SUBMISSION FORM

CC 968 (R2023-10)

First name (required) **Bela**

Last name (required) **Syal**

How do you wish to attend? **In-person**

If you are providing input on service plans and budget adjustments, please indicate if you require language or translator services. (required - max 75 characters) **No**

What meeting do you wish to comment on? (If you are providing input on service plans and budget adjustments, please select "November 20") (required) **Council**

Date of meeting (If you are providing input on service plans and budget adjustments, please select "November 20") (required) **Nov 14, 2023**

What agenda item do you wish to comment on? (If you are providing input on service plans and budget adjustments, please write "budget" below) (Refer to the Council or Committee agenda published [here](#).)

(required - max 75 characters) **Public Hearing November 14th, Planning Matters CPC2023-0931**

Are you in favour or opposition of the issue? (required) **In favour**

Comments - please refrain from providing personal information in this field (maximum 2500 characters)

LIBERTY, BELVEDERE SLIDE 1

1 **Housing Diversity** is achieved through a variety of housing types that provide opportunities for multigenerational housing and variety of multi residential located in proximity to open space amenities.

2 **Memorial DR / 84 ST Interface** will be addressed through street front townhouses, multi residential and neighbourhood commercial.

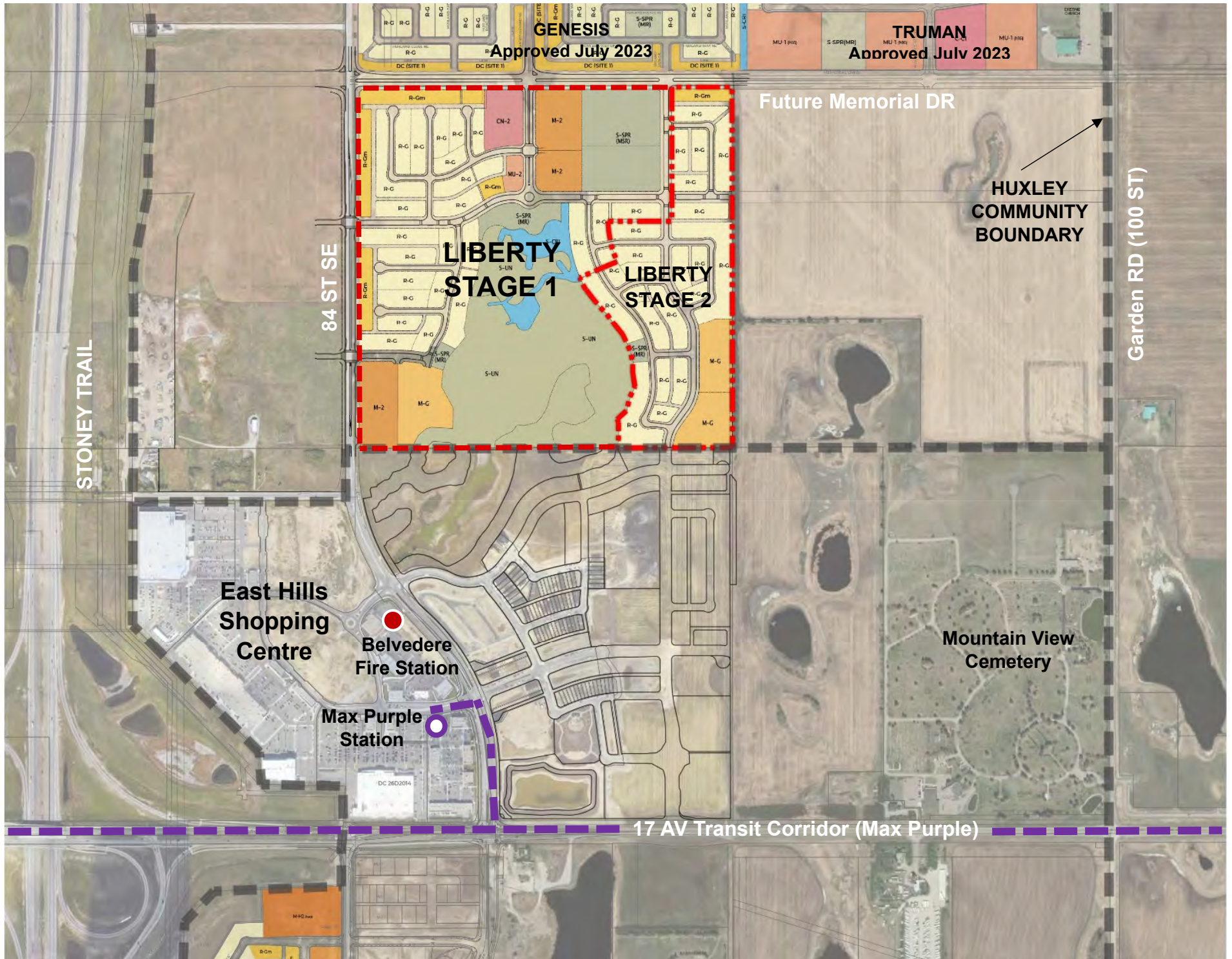


3 **Eco Sensitive Multi-functional Liberty Park & Neighbourhood Activity Centre** located at the terminus of Liberty Blvd will integrate the existing wetland and be the centrepiece; 32% of the Liberty neighbourhood is dedicated in open space.

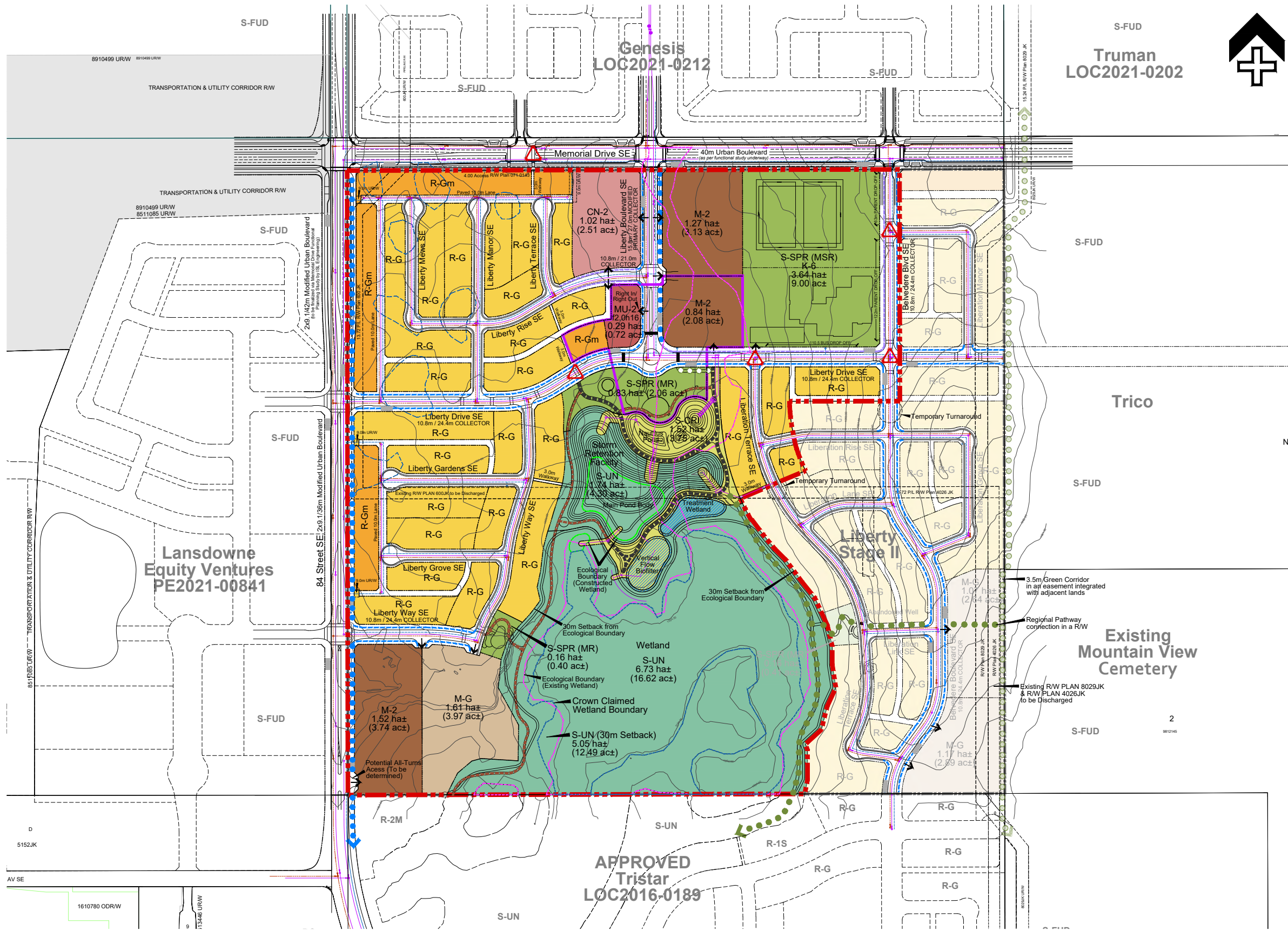


4 **Multimodal Connectivity** - Direct east-west transit route, the pathway network along the wetland complex and the green corridor along the east boundary will provide multimodal connectivity and facilitate walking and cycling to key destination areas.

LIBERTY, BELVEDERE SLIDE 2



LIBERTY BELVEDERE STAGE 1



Planningplus

PASQUINI & ASSOCIATES
ENGINEERING - GEOMATICS

MAGNA
ENGINEERING SERVICES INC.

Athena Environmental Consultants Ltd.

bunt & associates

coregeomatics

L.A. West
Landscape - Architectural - Design - Consulting

Stantec

Legend

- - - - - Outline Plan Boundary
- - - - - Contour Interval 1.0m
- - - - - Neighbourhood Activity Centre Boundary
- 3.0m Regional Pathway
- 3.0m Multi-Use Pathway
- ○ ○ ○ ○ 3.5m Green Corridor
- - - - - 4.0m Maintenance Pathway
- - - - - 2.5m Local Pathway
- - - - - 2.0m Separate Sidewalk
- - - - - 2.0m Mono Sidewalk
- - - - - 1.5m Mono Sidewalk
- ||||| Bus Zone
- △ Rectangular Rapid Flashing Beacon (RRFB)
- Potential Access
- - - - - Crown Claimed Wetland Boundary
- - - - - 30m Wetland Setback
- - - - - Ecological Boundary (Existing Wetland)
- - - - - Ecological Boundary (Constructed Wetland)

- Deep Services - Existing**
- - - - - Storm Sewer/Manhole
 - - - - - Sanitary Sewer/Manhole
 - - - - - Water Main
- Deep Services - Proposed**
- - - - - Storm Sewer/Manhole
 - - - - - Sanitary Sewer/Manhole
 - - - - - Water Main

