



Calgary Planning Commission

Agenda Item: 7.2.15



LOC2022-0179

Land Use Amendment

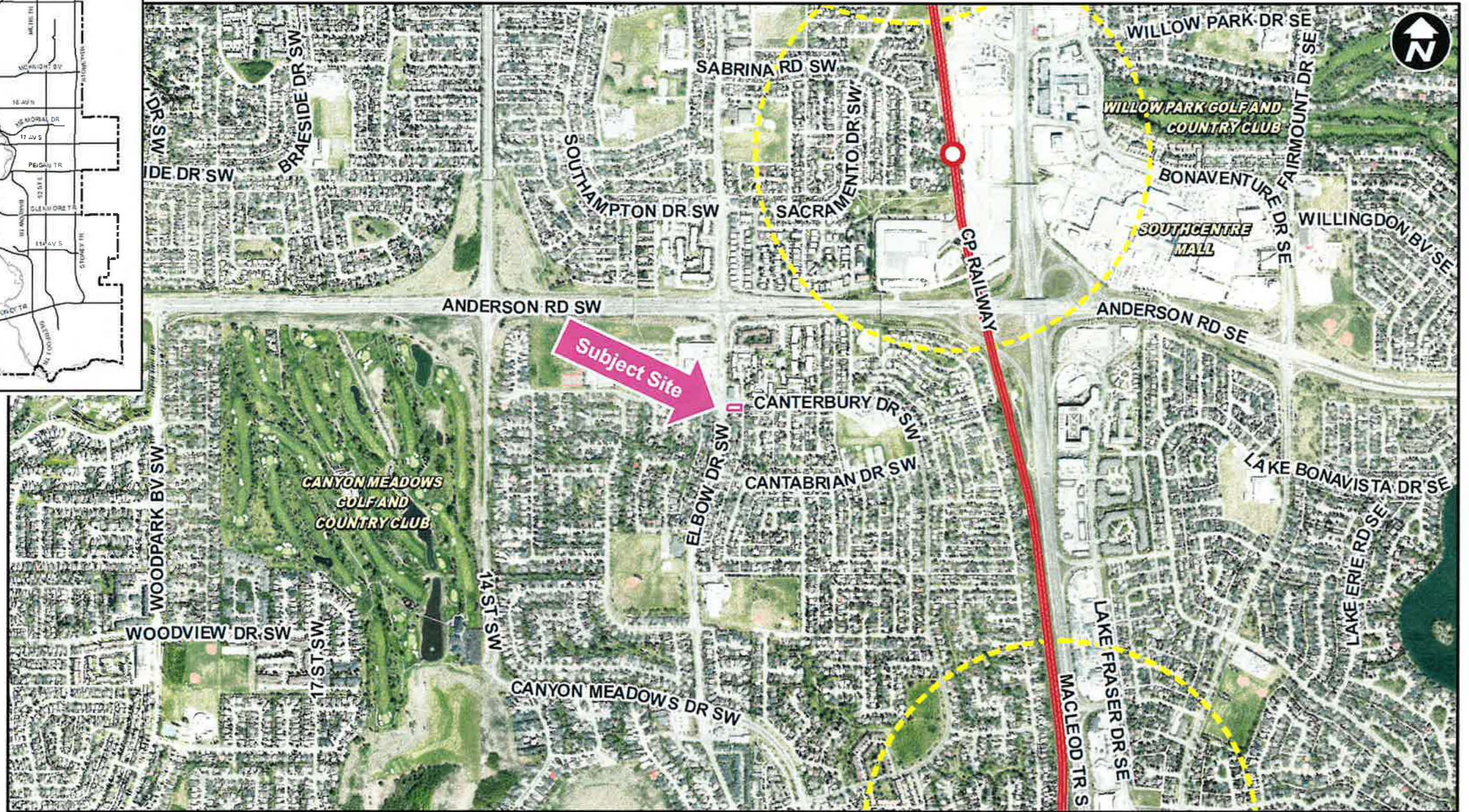
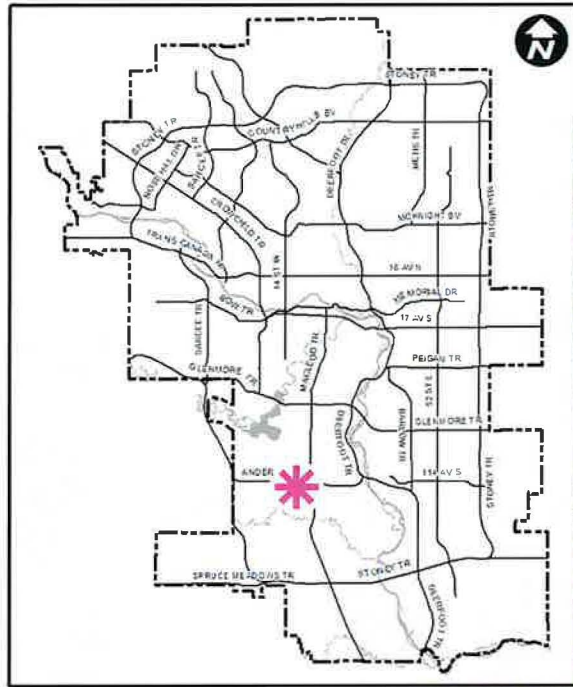
2023 September 21

CITY OF CALGARY
RECEIVED
IN COUNCIL CHAMBER
SEP 21 2023
ITEM: 7.2.15 - (2023-1018)
Distro-presentation
CITY CLERK'S DEPARTMENT

RECOMMENDATION:

That Calgary Planning Commission recommend that Council:

Give three readings to the proposed bylaw for the redesignation of 0.08 hectares \pm (0.19 acres \pm) located at 303 Canterbury Drive SW (Plan 5720JK, Block 16, Lot 46) from from Direct Control (DC) District to Direct Control (DC) District to accommodate Child Care Service, with guidelines.



LEGEND

- 600m buffer from LRT station
- LRT Stations**

 - Blue
 - Downtown
 - Red
 - Green (Future)

- LRT Line**

 - Blue
 - Blue/Red
 - Red

- Max BRT Stops**

 - Orange
 - Purple
 - Teal
 - Yellow



○ Bus Stop

Parcel Size:

0.08 ha
18m x 42m



Canterbury Dr SW

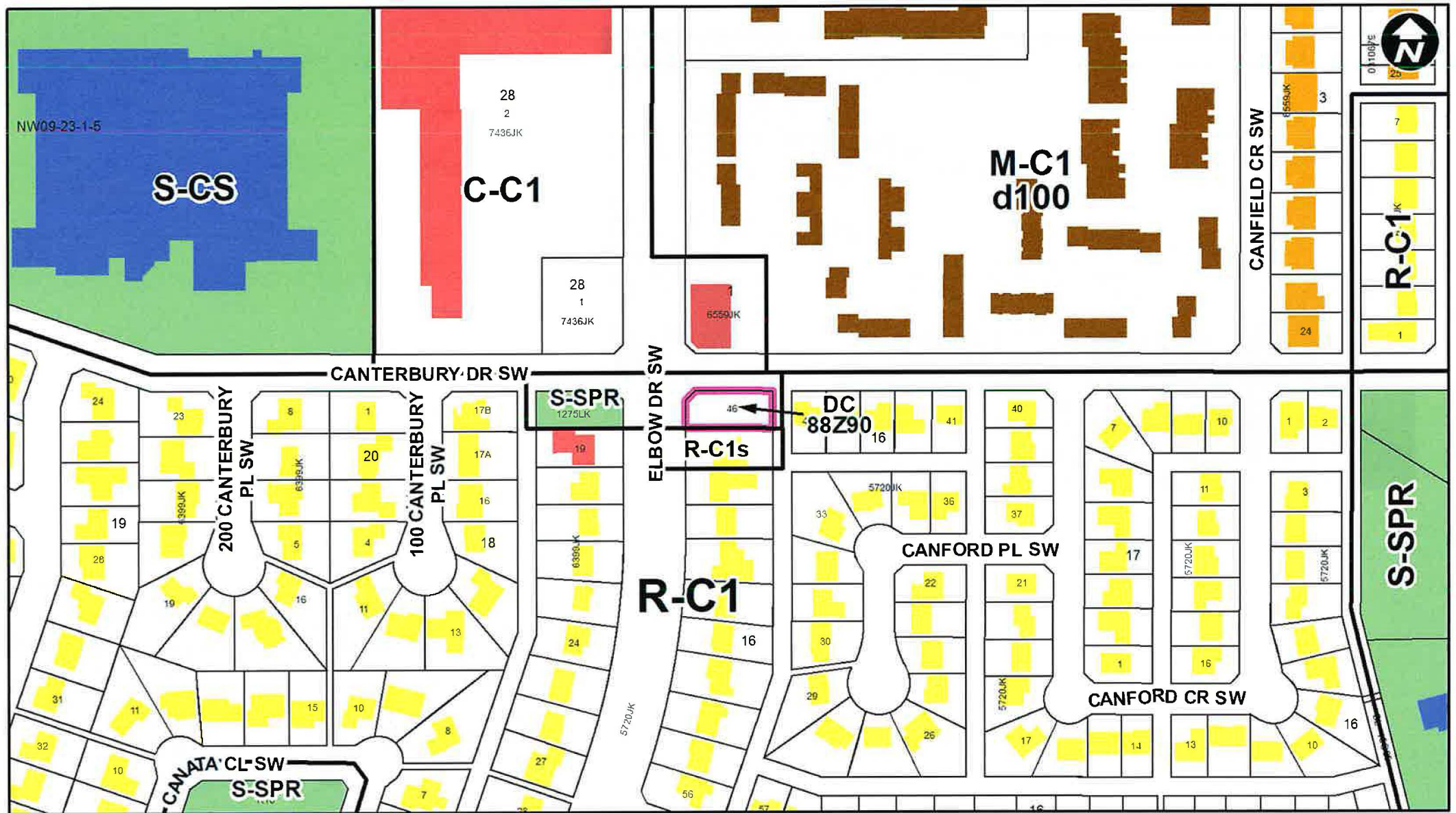
Rear lane

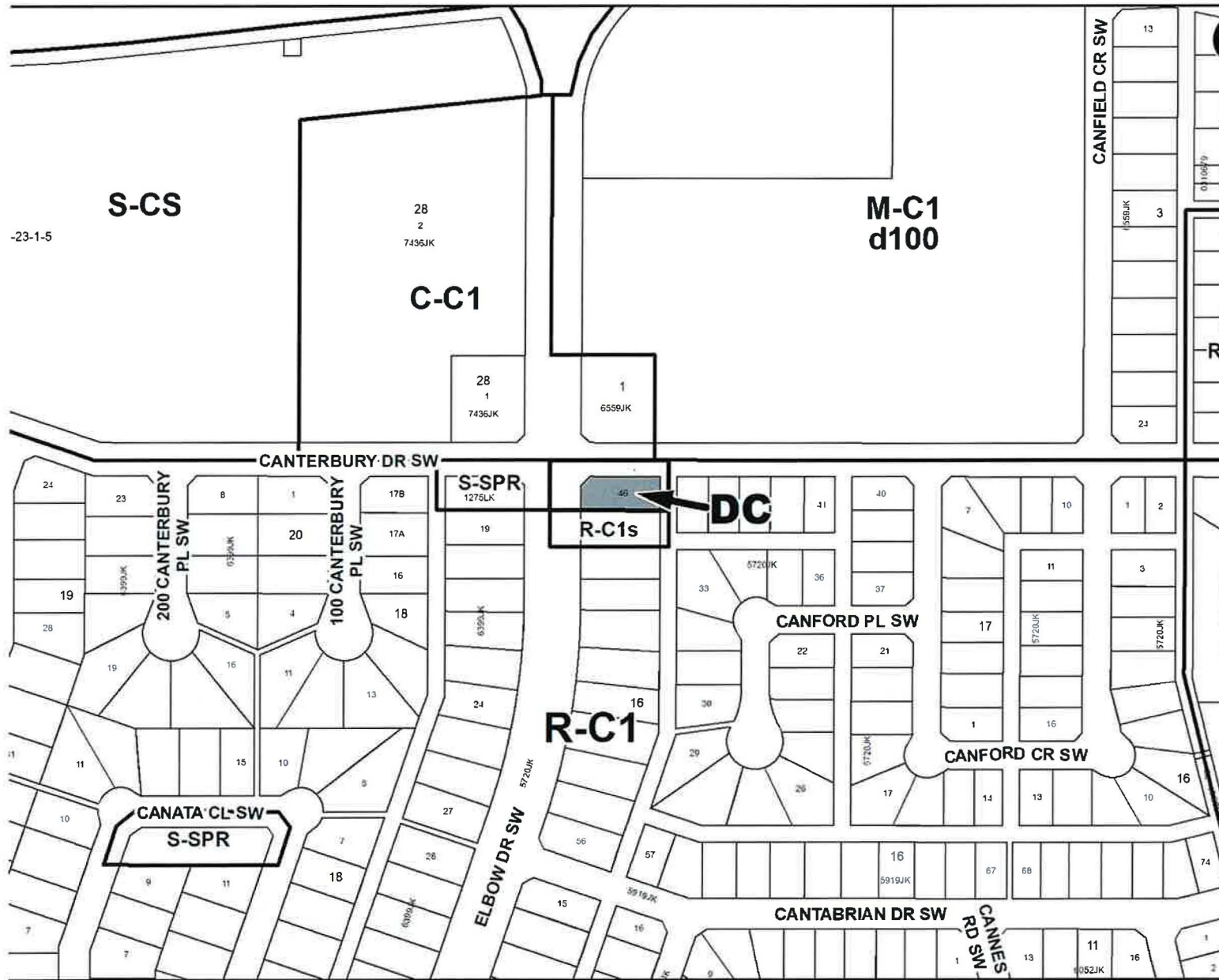


Surrounding Land Use

LEGEND

- Single detached dwelling
- Semi-detached / duplex detached dwelling
- Rowhouse / multi-residential
- Commercial
- Heavy Industrial
- Light Industrial
- Parks and Openspace
- Public Service
- Service Station
- Vacant
- Transportation, Communication, and Utility
- Rivers, Lakes
- Land Use Site Boundary





Proposed Direct Control (DC) District:

- Based on R-C1 district;
- Additional discretionary use of Child Care Service; and
- Maximum number of children, parking and outdoor play space to be reviewed at DP stage.

RECOMMENDATION:

That Calgary Planning Commission recommend that Council:

Give three readings to the proposed bylaw for the redesignation of 0.08 hectares \pm (0.19 acres \pm) located at 303 Canterbury Drive SW (Plan 5720JK, Block 16, Lot 46) from from Direct Control (DC) District to Direct Control (DC) District to accommodate Child Care Service, with guidelines.



Supplementary Slides

Site selection criteria for a Low Density Residential Areas

Child care services in low density residential area should be located in relationship to activity focus areas such as schools, community centres, recreation facilities, parks and local commercial areas	✓
Child care services should be located on a site that can provide sufficient staff parking and pick-up and drop-off parking.	✓
On sites that can accommodate outdoor play areas for the type of child care being proposed.	✓
Located on collector streets	✓
Located on corner parcels (Preferred)	✓
Concentration of child care services should be considered including if there is more than one child care service on the same block	✓

