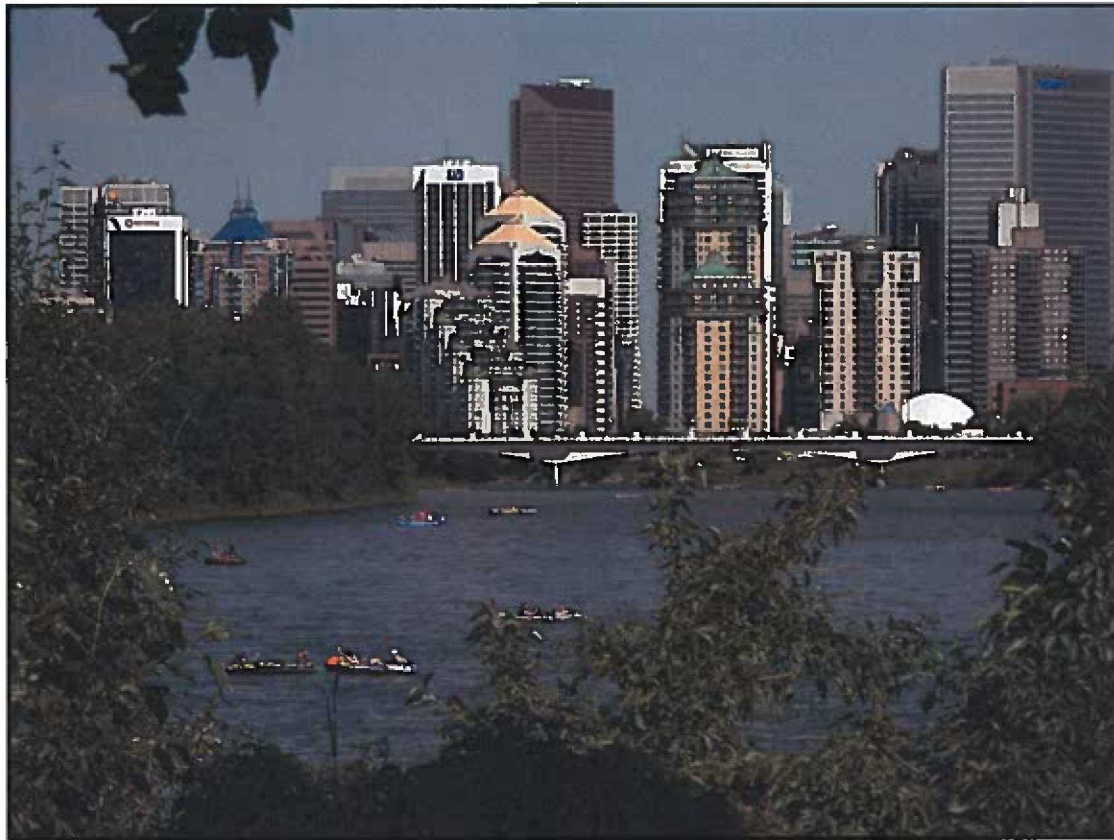


Enmax Legacy Parks Program 3 — Proposed Projects for Approval

This February 2014 update represents projects that meet both the previous criteria for this program as well as the newly expanded criteria. As outlined in Attachment 2 projects on the first list are a grouping of high priority projects that are in a state of readiness to proceed or are currently underway in a phased framework. It also includes a number of projects that have been elevated in priority due to the flood and projects where there is outside leveraged funding or partners. The following is the list of proposed projects that are being recommended for approval.

CITY OF CALGARY
RECEIVED
IN COUNCIL CHAMBER

FEB 24 2014

ITEM: LPC2014-0172

CITY CLERK'S DEPARTMENT

February 2014

ENMAX Parks Program *Growing a legacy for all Calgarians*

calgary.ca/parks | call 3-1-1



Enmax Legacy Parks Program 3 — Proposed Projects for Approval

Criteria/Timing Comments	Projects—Updated January 2014	2013 Budget Estimate
Unfunded Balance	River Park, Sandy Beach, Britannia Slopes — final phase (Project Abstract — page 3)	\$5.3M
High Usage	Community Focused Initiatives (Project Abstract — page 4)	\$0.15M
Timing with Water Resources	Bowmont East Regional Park (Project Abstract — page 5)	Total \$6.45M ASK—\$2.5M
Flood Impacted	'Bend in the Bow' Plan (Project Abstract — page 6)	\$0.3M
Leveraged Funding	Beltline Community Park — redevelopment (Project Abstract — page 7)	\$2.0M
Community Innovation	Sunalta Community Hub Park — plan (Project Abstract — page 8)	\$0.05M
Total		\$10.3M

February 2014

ENMAX Parks Program *Growing a legacy for all Calgarians*

calgary.ca/parks | call 3-1-1



THE CITY OF
CALGARY
Parks



River Park/ Sandy Beach / Brittania Slopes

Project: A Design Development Plan has been completed for this high use area and the first phase of construction is underway. Construction funding for the final phase is yet to be approved. As the Elbow River park system was flood impacted and has reduced park users now, undertaking final construction would be timely.

Budget: \$5.3M unfunded. The first phase of ±\$3M has been funded partially out of this program as well as program 500 within Parks.

Timeline: Design Development Plan completed in 2011.
Phase 1 construction underway.

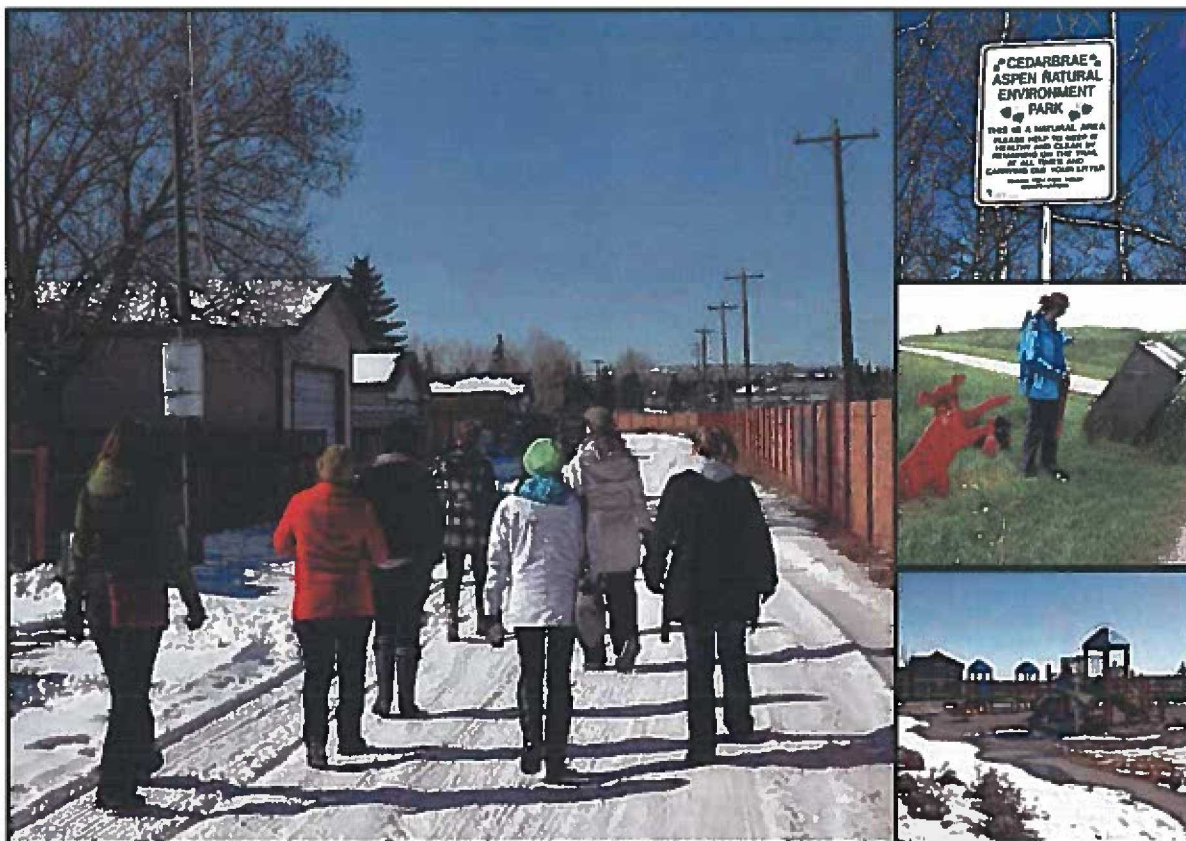
Status: Final construction phase on hold, pending funding.

Benefits: These regional parks are at a stage where a significant lifecycle upgrade is required to sustain their carrying capacity. Expanding public use in a sensitive way into the river edge site and the lower reservoir areas will provide additional park experiences.

February 2014



Enmax Legacy Parks Program 3 — Community Focused Initiatives



Community Initiatives

Project: City Council's recent innovation funding has allowed a number of communities and neighbourhoods to explore approaches and projects aimed at improving the quality of life in their neighbourhood. Plans are underway to formalize a framework for further work in this area. A modest funding stream is needed that will allow communities to leverage grants, corporate fund raising and other financial means to deliver one or two high priority items in a timely way.

Budget: \$0.5M (Initial estimate).
Timeline: Annual requests.
Status: Pending program requests.

Benefits: Improving community well-being, inclusion, safety or aesthetics through small and modest improvements to programs, public infrastructure and events contributes to The City's Triple Bottom Line policy framework.

February 2014

ENMAX Parks Program *Growing a legacy for all Calgarians*

calgary.ca/parks | call 3-1-1



THE CITY OF
CALGARY
 PARKS

Enmax Legacy Parks Program 3 — Bowmont East Regional Park



Bowmont East Regional Park

Project: This former gravel pit is immediately below the Varsity community and has been identified and supported as a future river-edge park for over 30 years. The 6-year expropriation of the site was completed in 2009. This has been a key long-term desired acquisition within the Bow River corridor and will form an eastern extension to Bowmont Regional Park as well as a stormwater management facility for the NW.

Budget: Overall estimate of \$6.45M for park site development.
Phase 1 of \$2.5M needed in 2014 to coordinate with timely utility work.

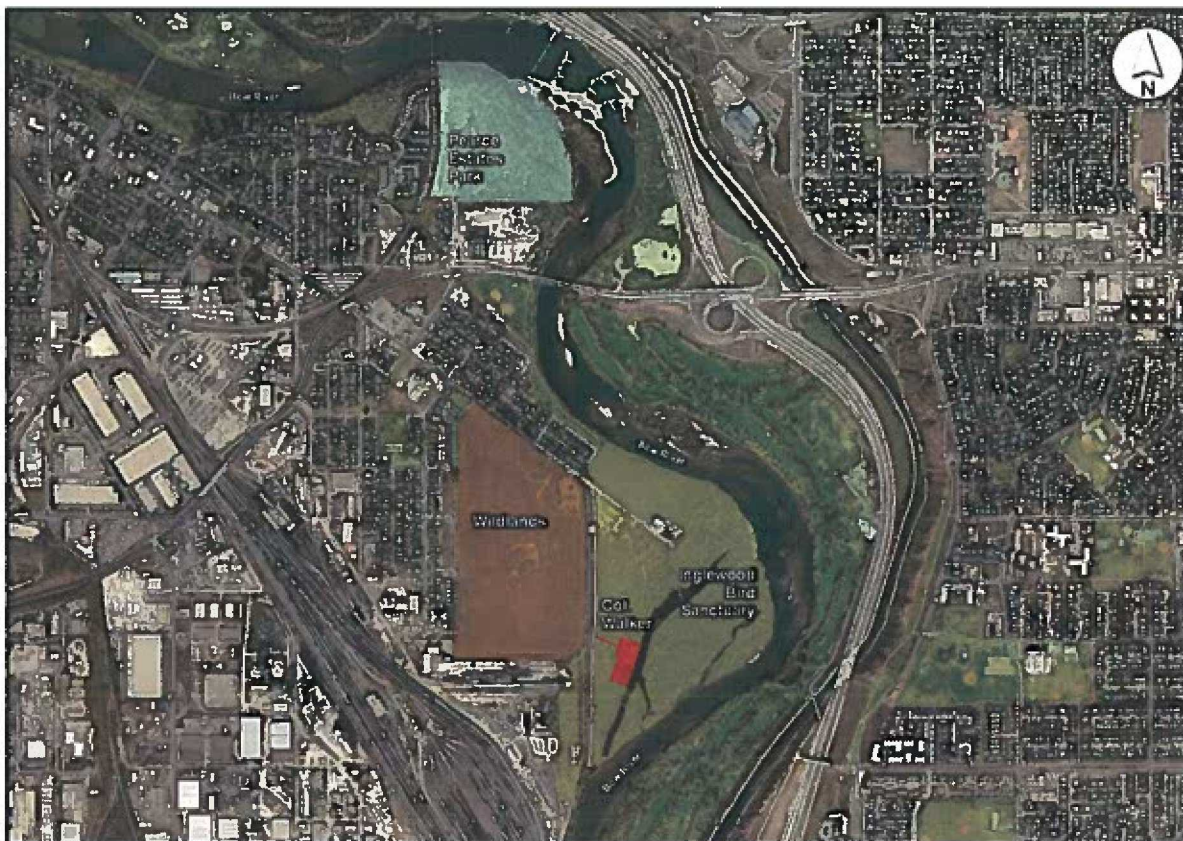
Timeline: Design Development Plan complete.
Park site development to be coordinated with stormwater work.

Status: Co-site development to follow funding.

Benefits: A strategically located piece of river valley property, this future park will enhance the Bow River north shore. The site will incorporate a series of wetlands and one of the largest remaining untreated stormwater catchments in the city.

February 2014





Inglewood Bird Sanctuary

Project: The project is a collection of adjacent open spaces in need of renovation and now flood impacted. Taken holistically, they are the open space from Harvey Passage along the south Bow River shore to include the Inglewood Bird Sanctuary, Suncor Wildlands and the Colonel Walker Historic Site. A holistic plan is needed to move forward on both flood repairs and concurrent improvements and resilience. This work would update the 1984 Inglewood Bird Sanctuary Master Plan.

Budget: \$300K Design Development Plan exercise.
Full construction budget to be determined after the plan is developed.

Timeline: Colonel Walker House servicing plans completed.
Now High Priority due to flood impact.

Status: Pending funding.

Benefits: Now a high priority due to the flood impacts, this group of inner city open space would benefit from a holistic discussion and redevelopment exercise. Synergies in development, programming, resilience design and funding could be found by looking at this area as a collective.

February 2014



Former Calgary Lawn Bowling Site, circa 1950s

Project: The Beltline Community is significantly underserved in open space and each site should be fully accessible and respond to local needs. The Calgary Lawn Bowling site is a park in the Beltline but access is limited. While it has a long history at this location, the changing residential neighbourhood, traffic congestion, parking issues and a membership that no longer lives in the area has all coalesced to relocate the Lawn Bowling Club which is currently in the design process. This frees up a large park space for redevelopment. A private donation of \$2M has been made to spearhead this redevelopment. Administration is proposing an equal additional \$2M funding from both the Enmax Parks Program to leverage additional funding opportunities.

Budget: \$6M (\$2M ask) partially funded through a private donation of \$2M. The construction budget would be determined through the planning process.

Timeline: Early planning has started. Construction to start late 2014 or early 2015.

Status: Awaiting additional funding.

Benefits: Optimizing this site for a new community park will increase the functionality, design and accessibility of this currently single use park space.

February 2014

Enmax Legacy Parks Program 3 — Sunalta Community Hub Park



Sunalta Community Hub Park

Project: Development of a community park plan to support park redevelopment improvements adjacent to the proposed Sunalta Community Hub. Plan will support community initiatives and facilitate park improvements that increase functionality and capacity within the adjacent park. Modest community consultation and improvements to the park would yield long term benefits.

Budget: \$0.05M for conceptual planning

Timeline: Early planning has started. Construction to start late 2014 or early 2015.

Status: Awaiting additional funding.

Benefits: Optimizing this site as a community park will greatly increase locally accessible park space on a community site that is currently under utilized. It will also serve to provide a critical public realm improvement adjacent to the Sunalta LRT station.

February 2014