

Development Permit (DP2022-03502) Summary

The following excerpts (Figures 1-3) from the development permit application provide an overview of the proposal and are included for information purposes only. DP2022-03502 proposes the asphalt, aggregate and concrete use for the southern portion of the parcel, maintaining the RV storage approved for the northern portion. The proposed plant is 11.58 metres tall and located approximately 350 metres from the residential homes of Monterey Park to the west.

Figure 1: Site Plan

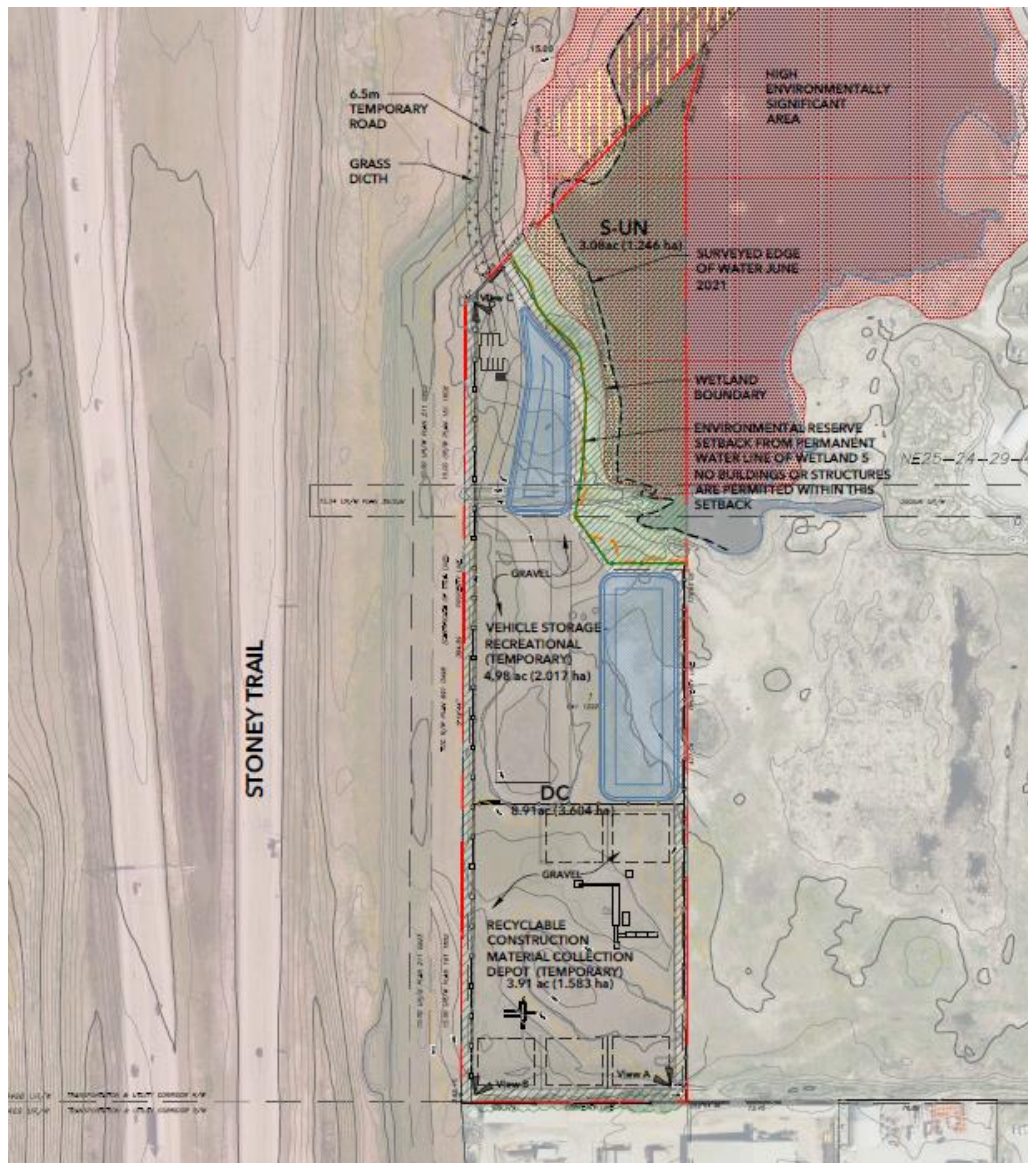


Figure 2: Site Section

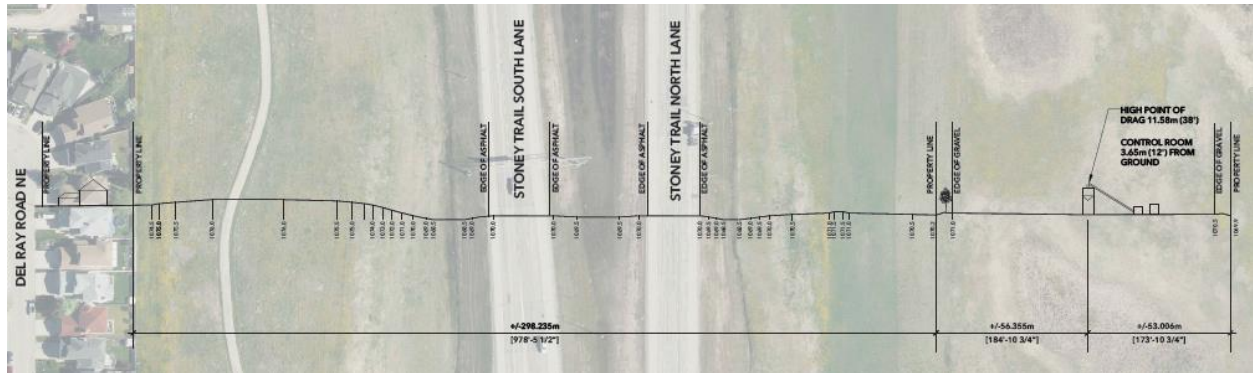


Figure 3: Photo example of the Recycled Asphalt Plant (RAP)

