



Calgary Planning Commission

Agenda Item: 7.2.4



LOC2023-0001

Land Use Amendment

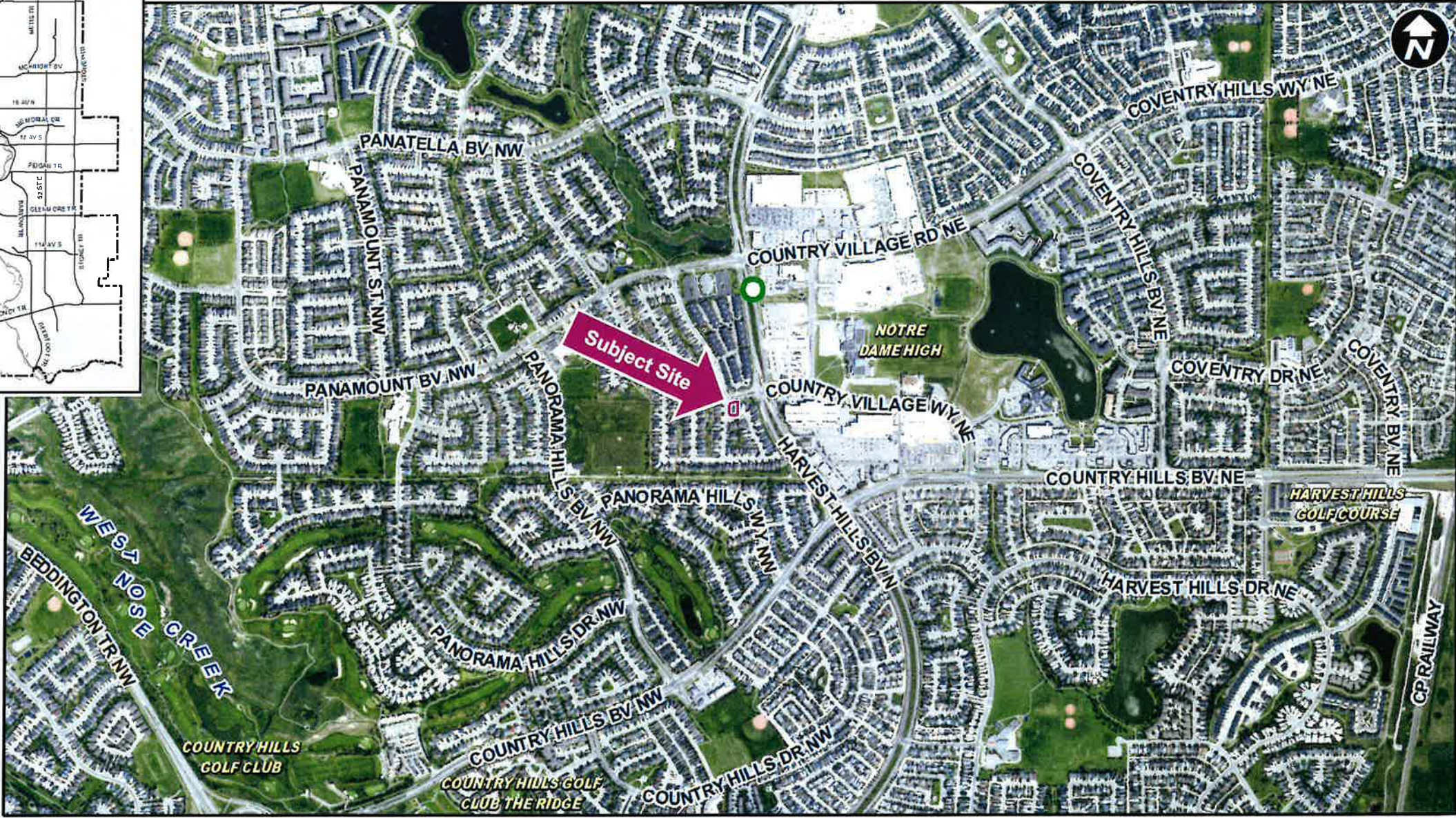
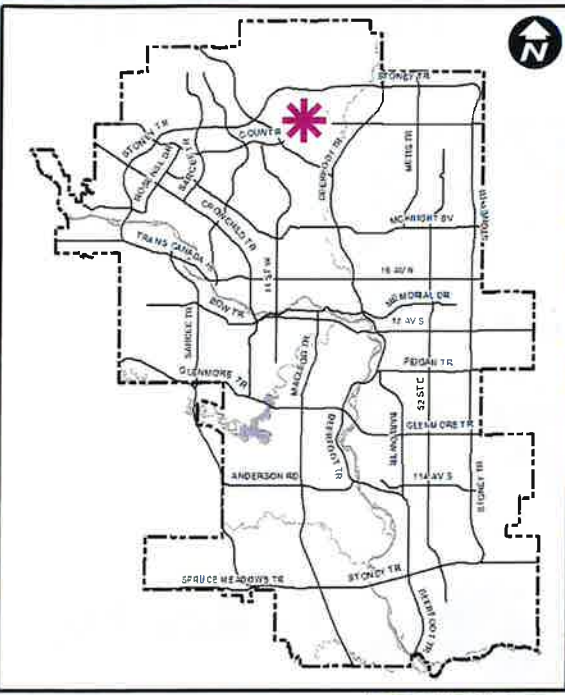
April 20, 2023

CITY OF CALGARY
RECEIVED
IN COUNCIL CHAMBER
APR 20 2023
ITEM: #7.24 LPC2023-0343
Distribution Presentation
CITY CLERK'S DEPARTMENT

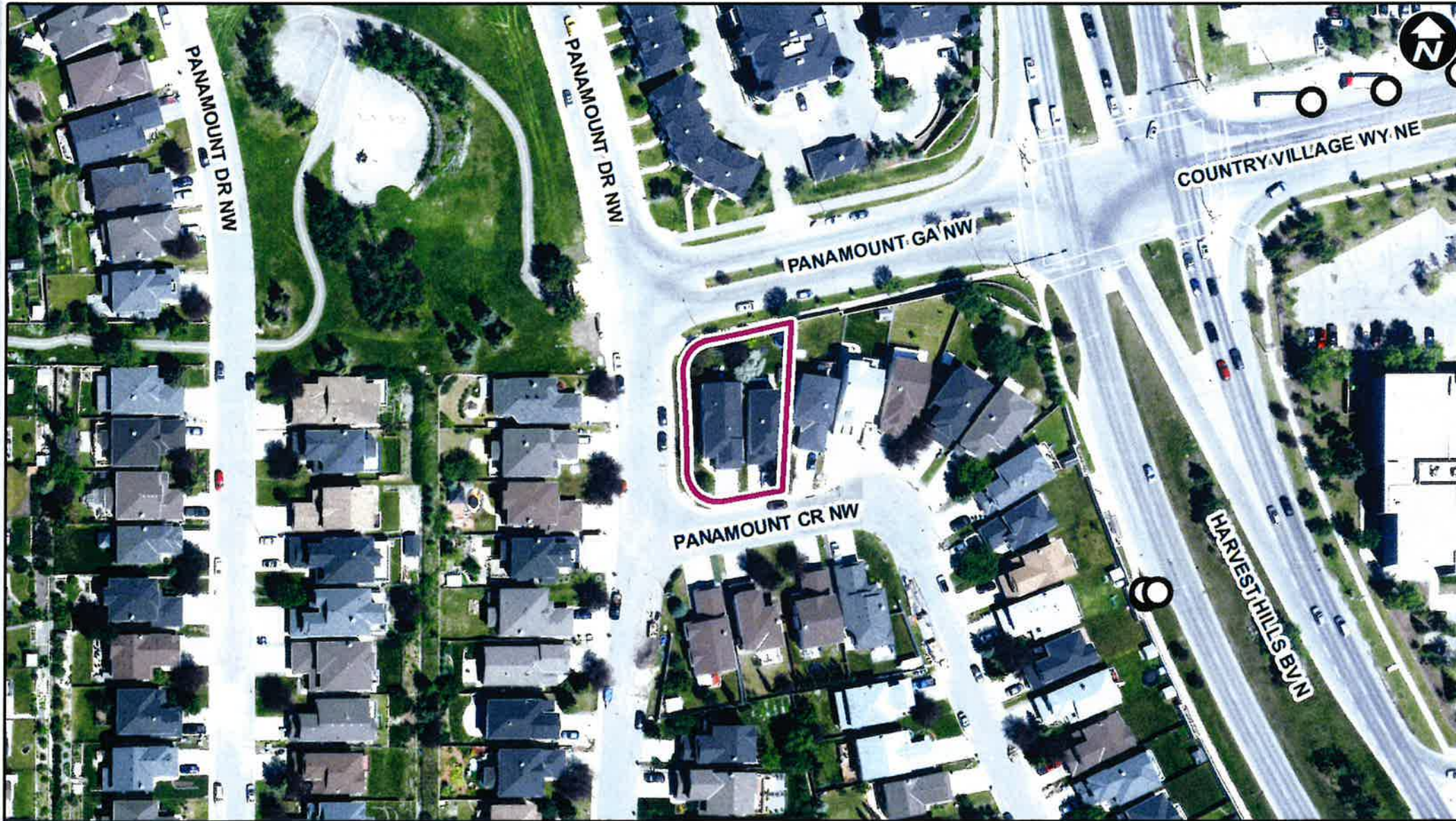
RECOMMENDATION:

That Calgary Planning Commission recommend that Council:

Give three readings to the proposed bylaw for the redesignation of 0.10 hectares \pm (0.25 acres \pm) located at 5 and 9 Panamount Crescent NW (Plan 0110609, Block 2, Lots 1 and 2) from Residential – One Dwelling (R-1) District to Direct Control (DC) District to accommodate Child Care Service, with guidelines.



- LEGEND**
- 600m buffer from LRT station
 - LRT Stations**
 - Blue
 - Downtown
 - Red
 - Green (Future) - LRT Line**
 - Blue
 - Blue/Red
 - Red - Max BRT Stops**
 - Orange
 - Purple
 - Teal
 - Yellow



○ Bus Stop

Site Size:
0.10 ha
25m x 40m

Site Photo – Looking Northwest

5



Site Photo – Looking North

6

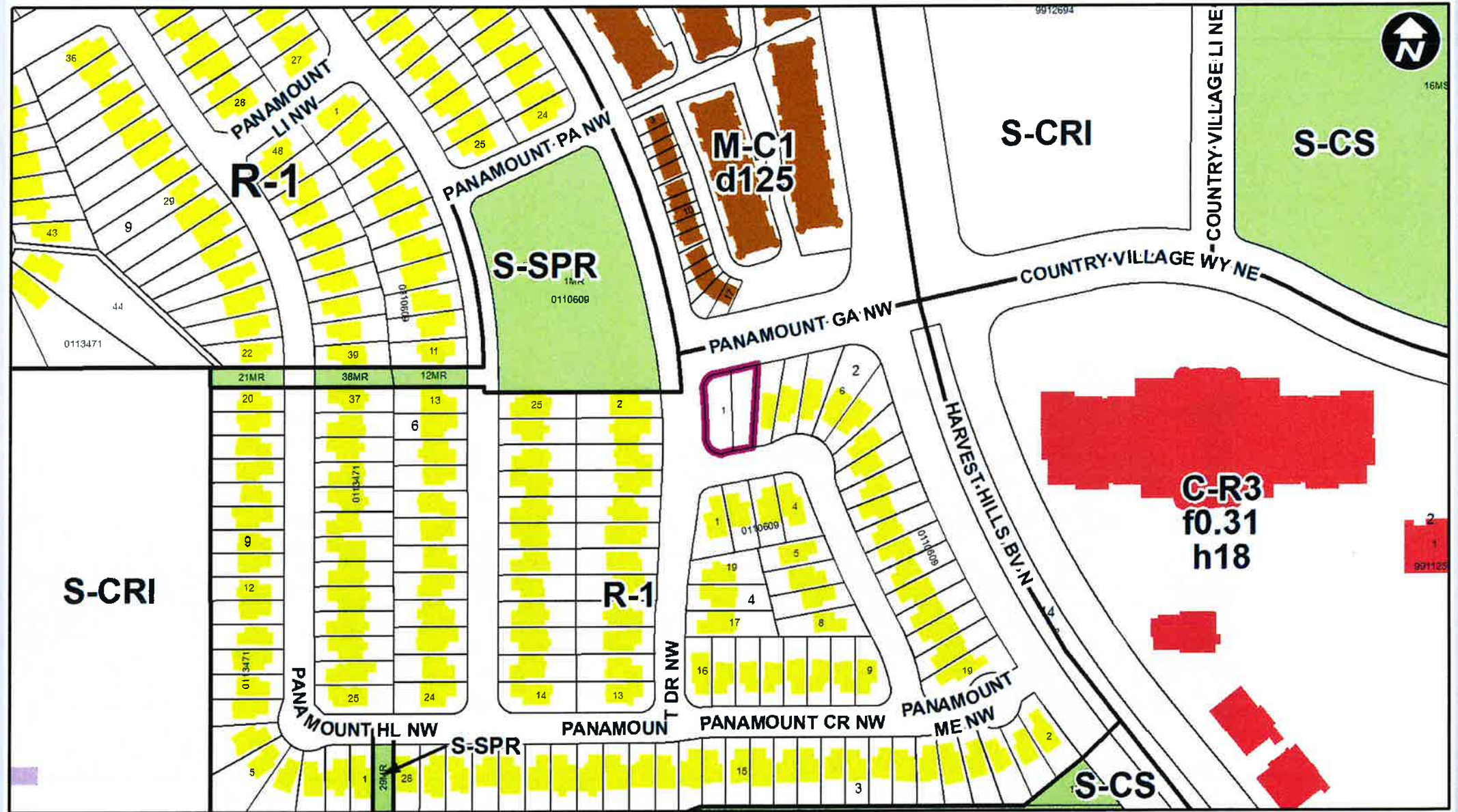




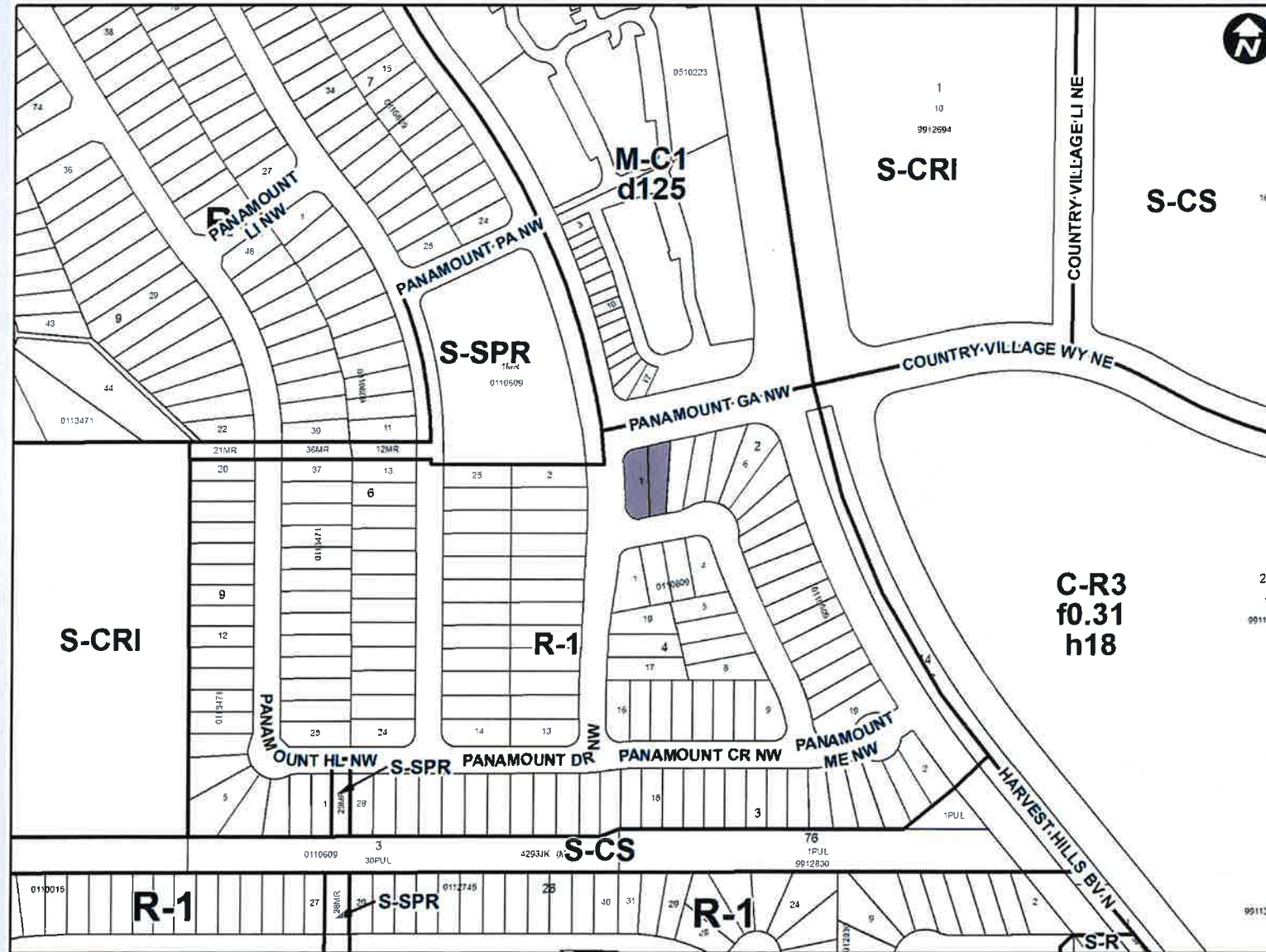
Surrounding Land Use

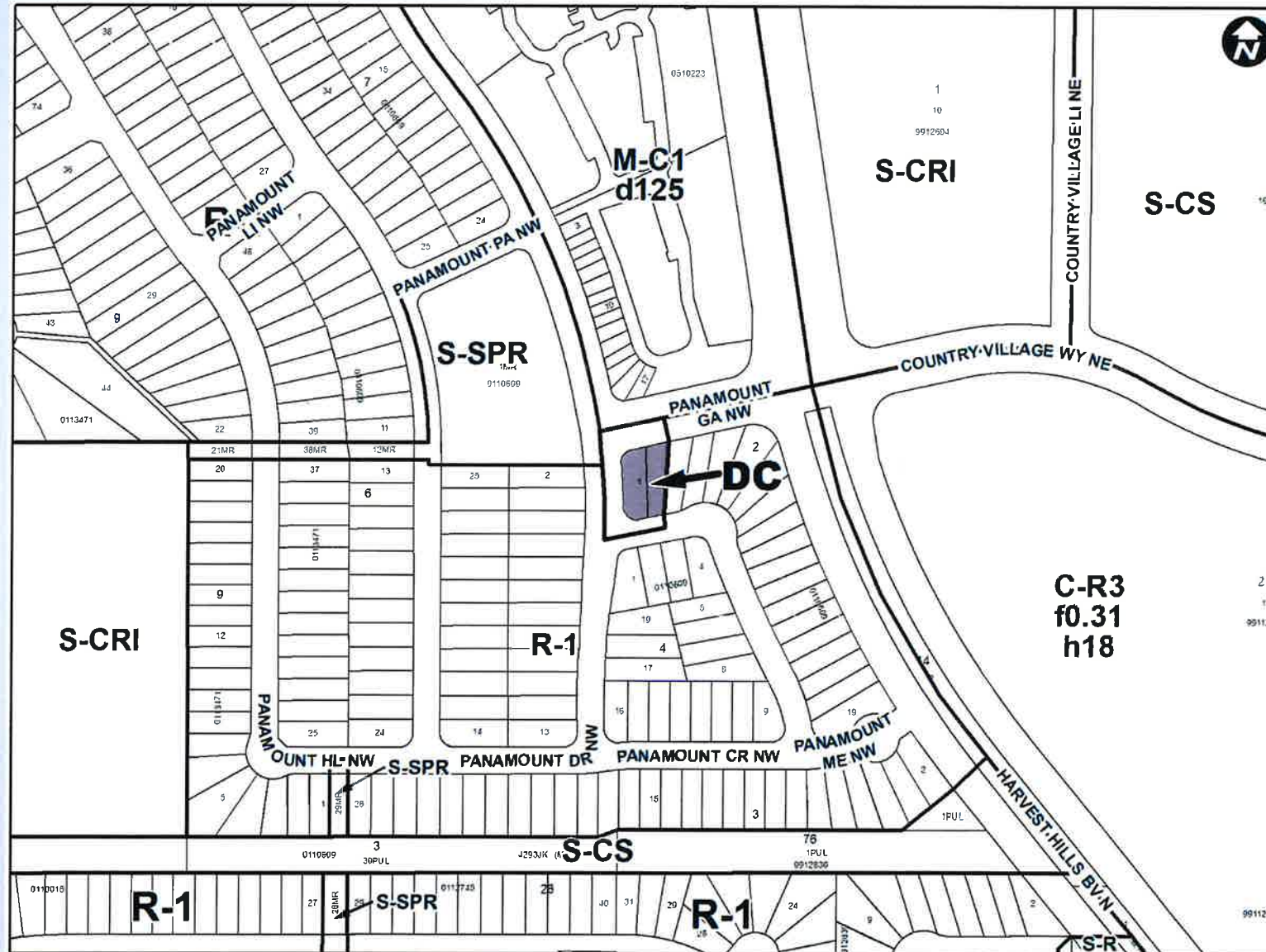
LEGEND

- Single detached dwelling
- Semi-detached / duplex detached dwelling
- Rowhouse / multi-residential
- Commercial
- Heavy Industrial
- Light Industrial
- Parks and Openspace
- Public Service
- Service Station
- Vacant
- Transportation, Communication, and Utility
- Rivers, Lakes
- Land Use Site Boundary



Existing Land Use Map





Proposed DC District:

- Based on R-1 District
- Additional discretionary use of Child Care Service

RECOMMENDATION:

That Calgary Planning Commission recommend that Council:

Give three readings to the proposed bylaw for the redesignation of 0.10 hectares \pm (0.25 acres \pm) located at 5 and 9 Panamount Crescent NW (Plan 0110609, Block 2, Lots 1 and 2) from Residential – One Dwelling (R-1) District to Direct Control (DC) District to accommodate Child Care Service, with guidelines.

Supplementary Slides

- ✓ • Located across the street from a park and close to a large commercial area to the east;
- ✓ • Located adjacent to a collector street (Panamount Gate NW) and within close proximity to the entrance of the community
- ✓ • Located on a corner parcel providing pick-up and drop-off access from several frontages
- ✗ • Concentration of child care services in an area should be avoided