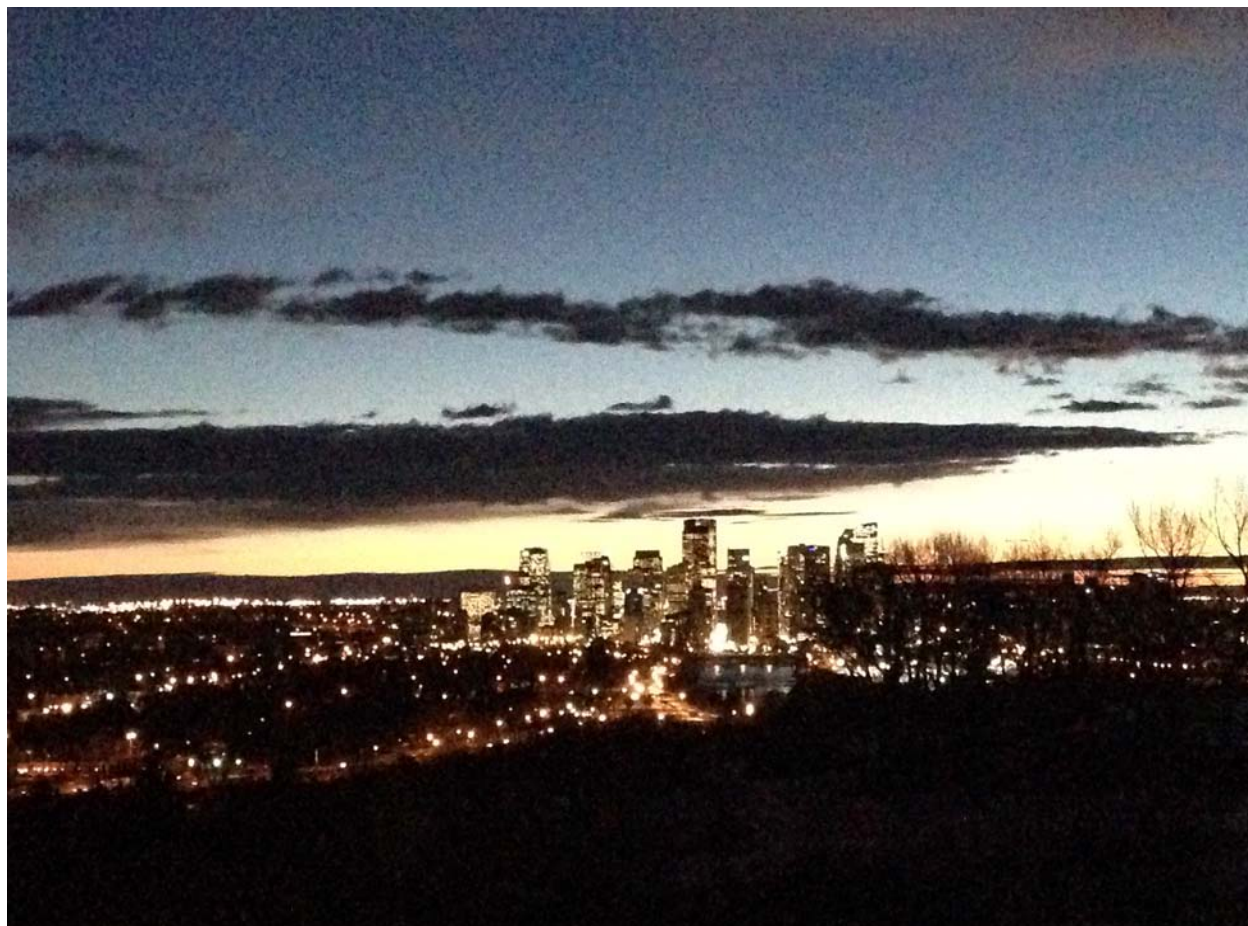


Enmax Legacy Parks Program 3 — Projects for Funding Consideration

This package represents a complete list of projects recommended for approval in the ENMAX Legacy Parks Program Phase 3. These projects meet both the previous criteria for this program as well as the newly expanded criteria. Projects recommended for approval over the next 4 years of cash flow are either in a state of readiness or are expected to be. Some projects are already underway in a phased approach; ie Prairie Winds Park redevelopment. It also includes a number of projects that have been elevated in priority due to the flood and projects where there is outside leveraged funding or partners.

What was previously identified as the 'emerging' projects is captured within the CPRIP/ERIIP system and those projects will remain on the unfunded list. Also in this package is a one page abstract of each project; those previously funded (phase 3) and those up for consideration.

Note: All estimated project costs are linked to timing and financial numbers used for the Culture, Parks, and Recreation Infrastructure Plan (CPRIP) and align with the Action Plan and Budget cycle 2015-2018.

October 2014



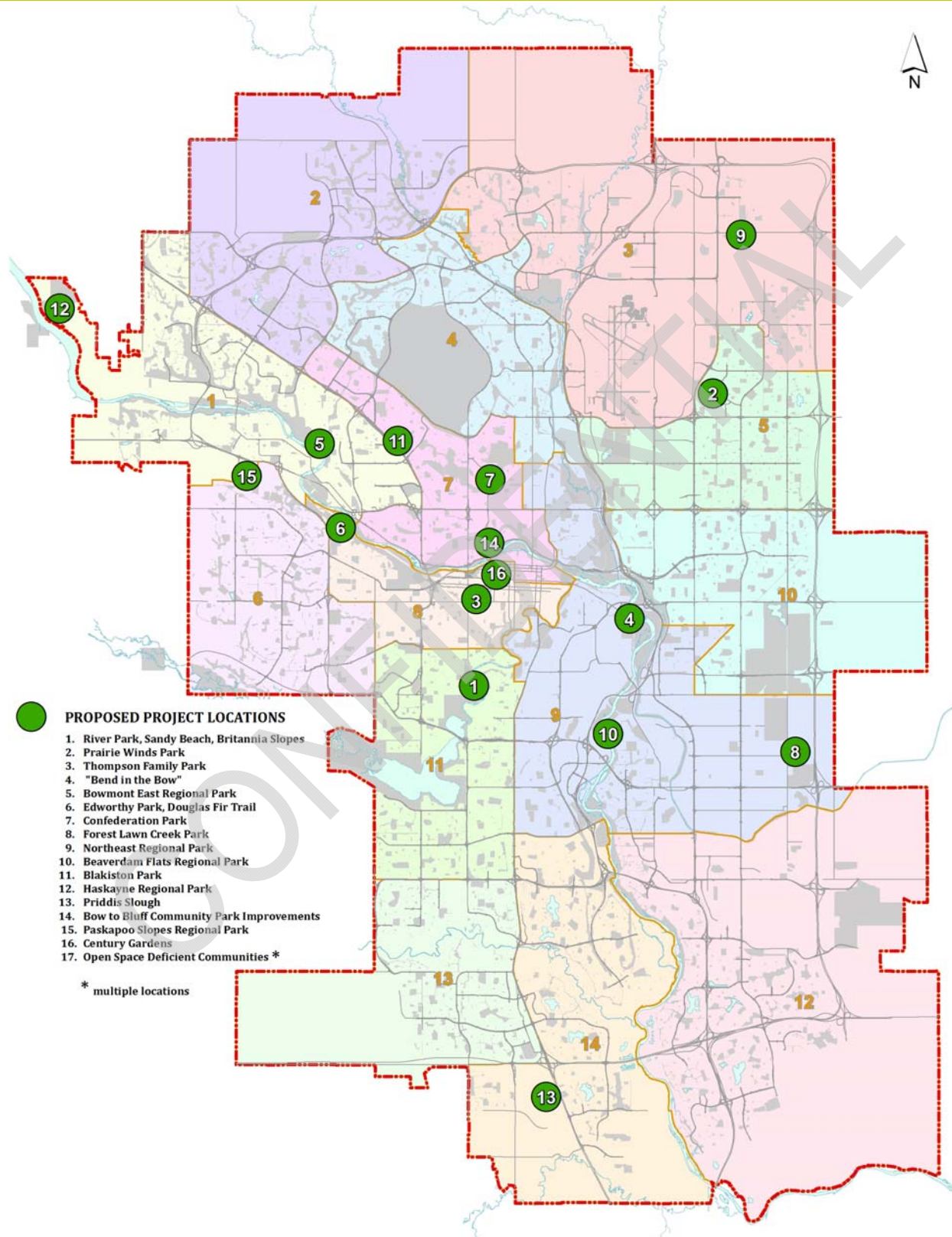
Enmax Legacy Parks Program 3 — Project List

Comments	Projects — Updated September 2014	Funded	Proposed Funding	Total
Fully funded	River Park, Sandy Beach, Britannia Slopes — final phase (Project Abstract — page 4)	\$6.9M	Fully funded	\$6.9M
Concept Plan underway	Prairie Winds Park — construction estimate (Project Abstract — page 5)	\$0.3M	\$11.6M	\$11.9M
Funded; concept developed	Thomson Family Park — redevelopment (Project Abstract — page 6)	\$2.0M	Fully funded	\$2.0M
Concept Plan initiating	'Bend in the Bow' — implementation, phase 1 (Project Abstract — page 7)	\$0.3M	\$2.1M	\$2.4M
To be timed with Water Resources	Bowmont East Regional Park (Project Abstract — page 8)	\$2.5M	\$3.86M	\$6.36M
Geotechnical work needed	Douglas Fir Trail — rehabilitation/safety work (Project Abstract — page 9)		\$2.26M	\$2.26M
Park lifecycle	Confederation Park — plan refresh (Project Abstract — page 10)		\$1.1M	\$1.1M
OLSH timing with Parks	Forest Lawn Creek Park — site development (Project Abstract — page 11)		\$1.7M	\$1.7M
Timing with developer	Northeast Regional Park (cityscape community) (Project Abstract — page 12)		\$2.74M	\$2.74M
Timing with flood repair work	Beaverdam Flats Regional Park (Project Abstract — page 13)		\$0.5M	\$0.5M
Time with TOD development	Blakiston Park — design + construction (Project Abstract — page 14)		\$2.85M	\$2.85M
Greenway tie-in	Edworthy Park — construction (Project Abstract — page 15)		\$2.1M	\$2.1M
Phase 1 site work	Haskayne Regional Park — site work (Project Abstract — page 16)		\$8.8M	\$8.8M
Time with adjacent developments	Priddis Slough — park planning + development (Project Abstract — page 17)		\$1.55M	\$1.55M
Community Innovation work	Bow to Bluff Park — improvements (Project Abstract — page 18)		\$5.92M	\$5.92M
Draft plan completed	Paskapoo Slopes Park — development (Project Abstract — page 19)		\$2.93M	\$2.93M
Communities with limited open space	Local Open Space Acquisition Fund (Project Abstract — page 20)		\$3.0M	\$3.0M
Developer timing	Century Gardens (Abstract — page 21)		\$9.69M	\$9.69M
	Unallocated		\$0.3M	\$0.3M
Total:		\$12M	\$63M	\$75M

October 2014



Enmax Legacy Parks Program 3 — Proposed Project Locations



October 2014

ENMAX Parks Program *Growing a legacy for all Calgarians*

calgary.ca/parks | call 3-1-1



**THE CITY OF
CALGARY**
PARKS

Enmax Legacy Parks Program 3 — River Park, Sandy Beach, Britannia Slopes



River Park / Sandy Beach / Britannia Slopes

Project: A phased Design Development Plan (DDP) was completed for this area and is fully funded. Parks is structuring the work schedule to minimize the impact on park users, coordinate with flood repair and pedestrian bridge construction as well as keep the park partially open while the improvements are being done. Construction is well underway.

Budget: Fully funded.

Timeline: Phase 1 construction underway, completing 2014.

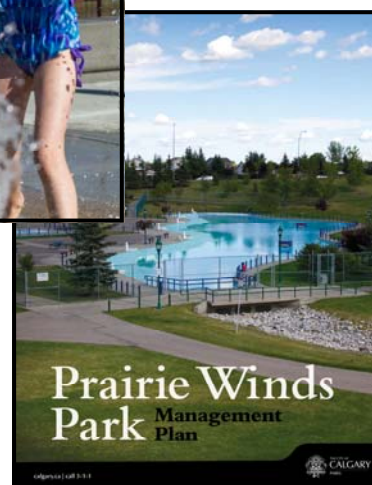
Status: Balance of construction completing 2016.

Benefits: These regional parks are at a stage where a significant lifecycle upgrade is required to sustain their carrying capacity. Expanding public use in a sensitive way into the river edge site and the lower reservoir areas will provide additional park experiences.

October 2014



Enmax Legacy Parks Program 3 — Prairie Winds Park



Prairie Winds Park

Project: Prairie Winds Park currently has infrastructure in need of significant refurbishment. This is one of the few North East Regional Parks and is heavily used. Spray park reconstruction has been completed and has reopened. The balance of the Design Development Plan (DDP) is to be complete by early 2015 followed by detail design and phased construction. A high level construction estimate has been done for the refurbishment of the park that will be refined once the Design Development Plan is completed. Phasing of construction will allow parts of the park to remain open throughout.

Budget: \$11.6M proposed construction budget.

Timeline: Design Development Plan initiated.
Wading Pool work funded and substantially complete.

Status: Design Development Plan has been initiated.

Benefits: The new Design Development Plan will identify the current needs and interests of the regional community. As the park currently needs a significant financial investment, a new plan would ensure that resources are put into current community needs.

October 2014



Enmax Legacy Parks Program 3 — Thomson Family Park



Thomson Family Park Concept

Project: The Beltline community is significantly underserved in open space and each site should be fully accessible and respond to local needs. The Calgary Lawn Bowling site is a park in the Beltline but access is limited. While it has a long history at this location, the changing residential neighbourhood, traffic congestion, parking issues and a membership that no longer lives in the area has all coalesced to relocate the Lawn Bowling Club which is currently underway with a planned move in summer 2015. This frees up a large park space for redevelopment. A private donation of \$2M has spearheaded this redevelopment.

Budget: Fully funded (\$2M donation matched by Legacy funds).

Timeline: First phase of design work is complete.

Status: Detailed design winter 2014. Construction to start summer 2015.

Benefits: Optimizing this site for a new community park will increase the functionality, design and accessibility of this currently single use park space.

October 2014



Enmax Legacy Parks Program 3 — 'Bend in the Bow'



Inglewood Bird Sanctuary

Project: The 'Bend in the Bow' lands are considered to be the open space from Pearce Estates Park along River Passage Park (Harvey Passage) down the south Bow River shore, including Inglewood Bird Sanctuary (IBS), the former brinks site, Suncor Wildlands, the Colonel Walker Historic Site and smaller adjacent areas. Originally imagined as a larger Design Development Plan (DDP) for this region, the IBS redevelopment has been singled out for priority due to the flood damage and the need to coordinate improvements with flood repair. Phase 1 of the DDP is now the bird sanctuary and then a future phase of the balance of connections and sites. Part of the construction funding has been requested through the 2015-2018 Action Plan.

Budget: \$2.1M phase 1 construction of immediate work at IBS. Total budget \$6M.

Timeline: Colonel Walker House servicing plans completed.

Status: IBS DDP initiating fall 2014. Funding for Plan previously approved.

Benefits: This inner city open space would benefit from a holistic discussion. Synergies in development, programming and funding could be found by looking at this area as a collective.

October 2014



Enmax Legacy Parks Program 3 — Bowmont East Regional Park



Bowmont East Regional Park

Project: This former gravel pit is immediately below the Varsity community and has been identified and supported as a future river-edge park for over 30 years. The 6-year expropriation of the site was completed in 2009. This has been a key long-term acquisition within the Bow River corridor and is an eastern extension to Bowmont Regional Park as well as a stormwater management facility for the northwest. The project is being coordinated and co-funded through Water Resources and Parks. \$2.5M has been previously approved.

Budget: \$3.86M unfunded balance of park construction budget.

Timeline: Design Development Plan complete.
Site development being coordinated with Water Resources stormwater work.

Status: Construction pending 2015.

Benefits: A strategically located piece of river valley property, this expansion to Bowmont Park will enhance the Bow River north shore. The site will incorporate a series of wetlands addressing one of the largest remaining untreated stormwater catchments in the city.

October 2014



Enmax Legacy Parks Program 3 — Douglas Fir Trail



Douglas Fir Trail

Project: There is a need to address slope failures in Edworthy Park on the Douglas Fir escarpment. Sections of the Douglas Fir Trail have been closed due to safety concerns. Primary causes are steep grades, high groundwater levels and numerous springs and overland drainage areas. The trail system (including bridges, boardwalks and stairs) must be re-evaluated for safety and stability and a significant piece requires re-routing. One existing section of the trail is currently being removed to address public safety from a previous slump.

Budget: \$2.26M estimated feasibility, redesign and construction budget.

Timeline: Majority of planning and construction to start in 2016.

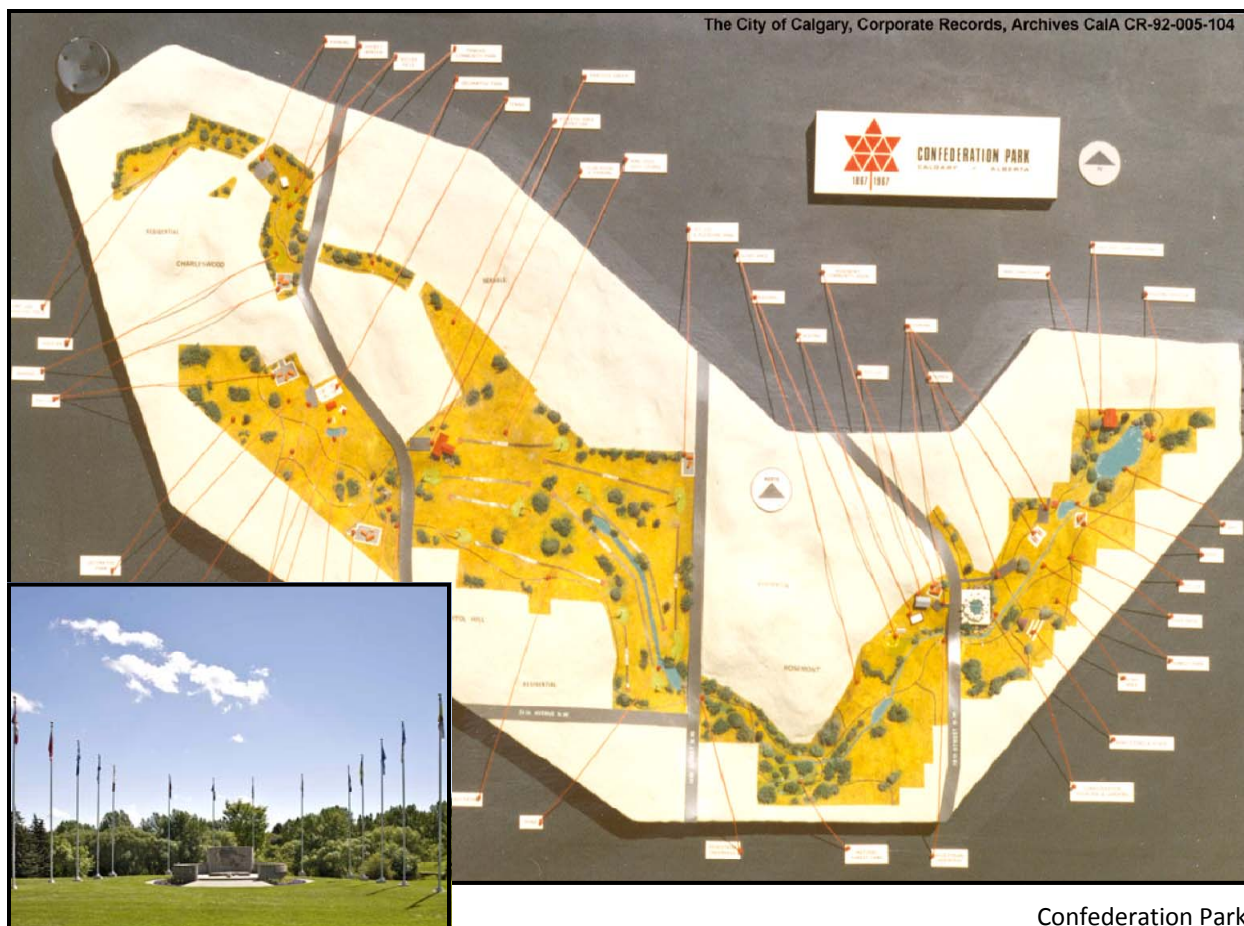
Status: Geotechnical report and feasibility studies will inform design work and next steps. To be undertaken in 2015, pending funding.

Benefits: Area has unsafe sections currently but is a well used and popular area for walkers and runners. It is a significant natural area and is the most easterly douglas fir stand in Alberta.

October 2014



Enmax Legacy Parks Program 3 — Confederation Park



Project: Confederation Park is a long linear regional park built to celebrate Canada's 100th Anniversary in 1967. It was one of the first regional parks in Calgary to be built with a 'public participation' style of planning. Parts of the park infrastructure need upgrading and life-cycle work. A new Design Development Plan (DDP) will help framework immediate and future lifecycle work, growth and change in this park. This park celebrates its 50th anniversary in 2017 with Canada's 150th anniversary.

Budget: \$1.1M for Design Development Plan and construction.

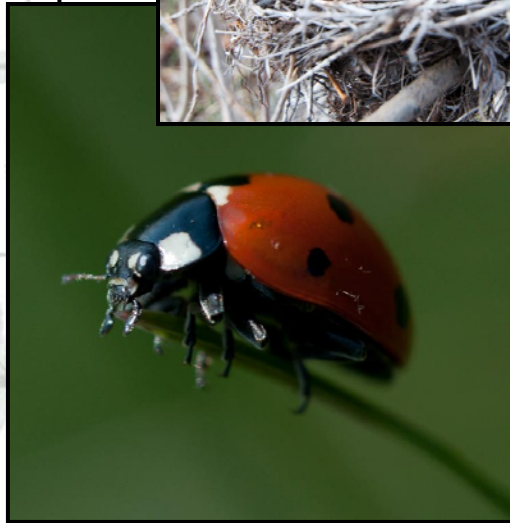
Timeline: Design to begin in 2015 with immediate construction in 2016.

Status: Project to be initiated in late 2014.

Benefits: This large regional park across north central Calgary services a large number of Calgarians and a refreshed plan would ensure its continued relevance, high use and enjoyment by the public. Ideally work is complete for Canada's 150th anniversary.

October 2014

Enmax Legacy Parks Program 3 — Forest Lawn Creek Park



Forest Lawn Creek from Elliston to Ralph Klein Park

Project: This 'missing link' is part of the Greenway Project Phase 2 and is being developed by The City. Forest Lawn Creek has a diverse mix of riparian shrub communities and significant native prairies. Wetlands associated with the creek attract a large number of waterfowl during spring and fall migrations. Through the use of the existing Environmental Reserve, as well as judicious placement of Municipal Reserve, Forest Lawn Creek will provide a 100 block pathway and park link between Elliston and Ralph Klein Regional Parks.

Budget: \$1.7M construction of 'non-pathway' park site development.

Timeline: Coordination is ongoing with The City and Parks Foundation, Calgary.

Status: On hold, awaiting funding for final design and construction.

Benefits: This park is part of the *Rotary Mattamy Greenway* with Parks Foundation, Calgary. The City committed to undertake this missing link between Greenways Phase 1 and Greenways Phase 2 as work is on the environmental reserve adjacent to City owned future industrial development.

October 2014



Enmax Legacy Parks Program 3 — Northeast Regional Park



Early Sketches—Regional Park, Cityscape

Project: An identified gap in regional parks exists in the northeast edges of Calgary. A land assembly is being undertaken through the wetland compensation process for a new wetland regional park in the emerging community of Cityscape. This future park is being assembled, planned and constructed as a joint project with Mattamy Homes. Parks is budgeting for infrastructure that elevates the park site from a local park to a regional site; i.e. washrooms, parking, etc. A regional park site management plan will also be commissioned out of this funding.

Budget: Estimated budget is \$2.74M.

Timeline: Early discussions are ongoing. Planning and final design in 2015, construction to start in 2016.

Status: Ultimate land assembly in discussion.

Benefits: This future park development addresses a regional park gap in northeast Calgary and provides a natural environment park experience in keeping with vernacular landscape of the area.

October 2014



Enmax Legacy Parks Program 3 — Beaverdam Flats Regional Park



Beaverdam Flats

Project: Beaverdam Flats Regional Park is adjacent to the former Esso refinery site, as well as Bow River edge lands, below the Lynnwood Ridge community. The regional pathway is a main spine through the site. This is an aging park currently undergoing flood repair planning, as well as in need of lifecycle upgrades including shoreline restoration, parking and washroom improvements.

Budget: \$500K for a refresh plan and phase 1 construction.

Timeline: Start in 2016.

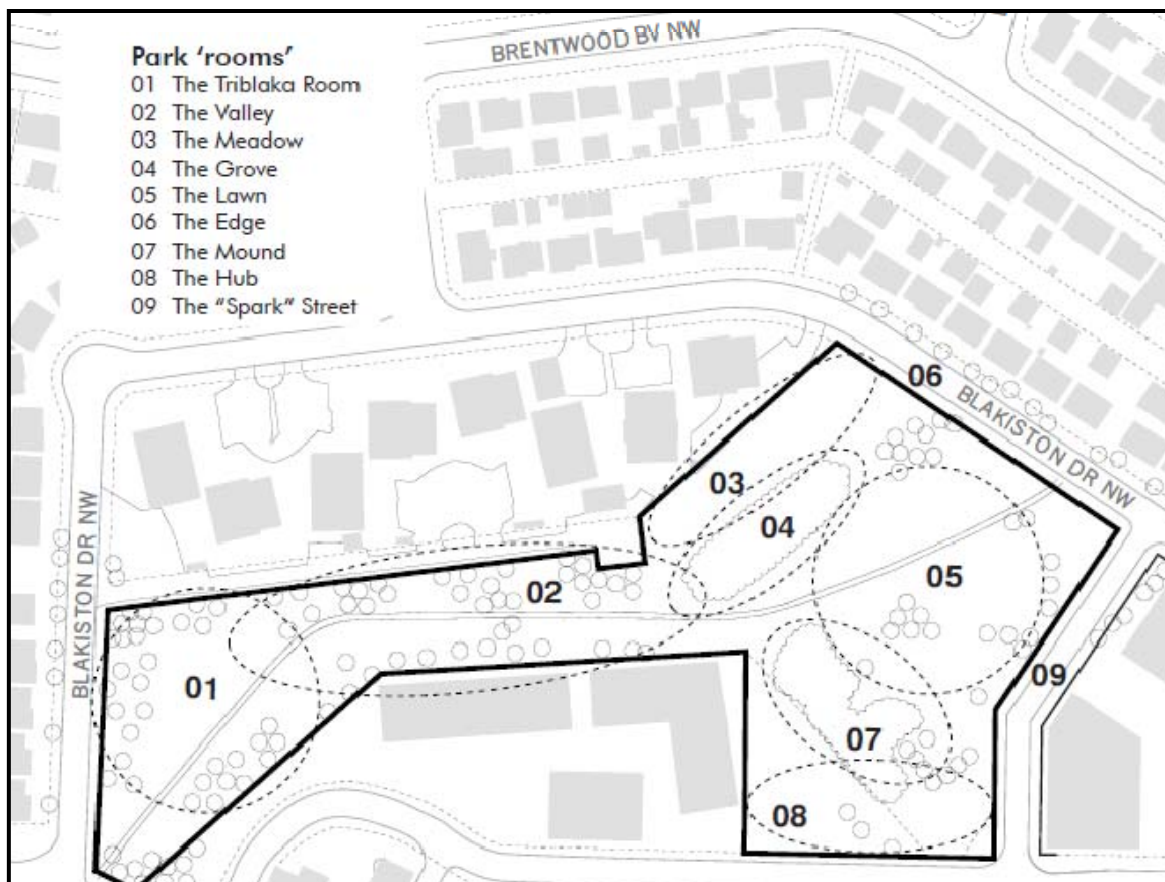
Status: Awaiting adjacent land plans and future use (former refinery site, Lynnwood Ridge and former Sprung site). Work to coincide with flood recovery.

Benefits: A partial brown-field park development, this site has the potential to serve a significant number of regional pathway users, in an attractive area along the Bow River.

October 2014



Enmax Legacy Parks Program 3 — Blakiston Park



Blakiston Park

Project: Public engagement and design process is underway for Blakiston Park. The work will build off of the previous Blakiston Park Redesign Community charrette process to finalize a technical design that will be used for construction of park improvements.

Budget: \$2.85M final design, tender drawings and construction budget.

Timeline: Design completion early 2015. Pending funding, construction to begin in 2016.

Status: Public engagement and technical design underway.

Benefits: This park will be the centerpiece of the Brentwood Transit-Oriented Development (TOD) with intensification occurring around it. Park enhancements will benefit current and future community residents.

October 2014



Enmax Legacy Parks Program 3 — Edworthy Park



Edworthy Park

Project: The Rotary Mattamy Greenway will be routing part of its west leg through Edworthy Park. It will connect from the Sarcee Tr. & Bow Tr. intersection to the north Bow River pathway system across the Boothman bridge. In addition, improvements to the off-leash area at the top of Edworthy will be a cost share between a donation to Parks Foundation, Calgary and The City. This leveraged funding and design opportunity has put the refresh of Edworthy Park as a high priority. The Design Development Plan (DDP) work is funded and will be initiated in 2015. The Greenway work is being separated out to stay in sync with the other Greenway construction. Parks funding is needed to implement high priority improvements to this regional park including improving some of the degraded natural environment.

Budget: \$2.1M for phase 1 construction.

Timeline: DDP planning to commence in 2015 with construction to commence in 2017.

Status: Awaiting initiation.

Benefits: Project will lead to better management and a refreshed Edworthy Park, integration of the Greenway route and improvements, improving the experience and carrying capacity for all users of this popular regional park.

October 2014



Enmax Legacy Parks Program 3 — Haskayne Regional Park



Haskayne Regional Park Concept

Project: This 186 hectare land assembly for a new regional park abuts Glenbow Ranch Provincial Park and is located on the north bank of the Bearspaw Reservoir. The site is a combination of two land purchases as well as an ecological gift. The park design is underway. This site has received an additional Haskayne family donation to assist in site development. This park will be a central waterfront and regional park hub in the Calgary to Cochrane pathway system.

Budget: \$8.8M estimated development budget from Legacy phase 3.

Timeline: Resolution of the access issue is underway as is the design development process. The South Bearspaw Area Structure Plan (ASP) has also been initiated.

Status: Ongoing discussions with land owners, Glenbow Provincial Park and others occur around site coordination and access.

Benefits: This new regional park will provide Calgarians with waterfront access to the Bearspaw Reservoir, as well as a park celebrating Calgary's heritage, ecology and art, located adjacent the Glenbow Ranch Provincial Park.

October 2014



Enmax Legacy Parks Program 3 — Priddis Slough



Priddis Slough

Project: Priddis Slough was identified as a regionally significant opportunity for a wetland park in phase 1 of the Enmax Legacy Park Program. It is the largest remaining wetland inside the city. Land acquisition is proceeding on an opportunity basis. There is a future need to undertake a Design Development Plan and park development at the site including a Wetland Management Plan.

Budget: \$1.55M for a Design Development Plan and Wetland Management Plan, and phase 1 construction budget.
Land acquisition costs are currently unknown.

Timeline: Begin planning in 2016 and construction in 2017/2018.

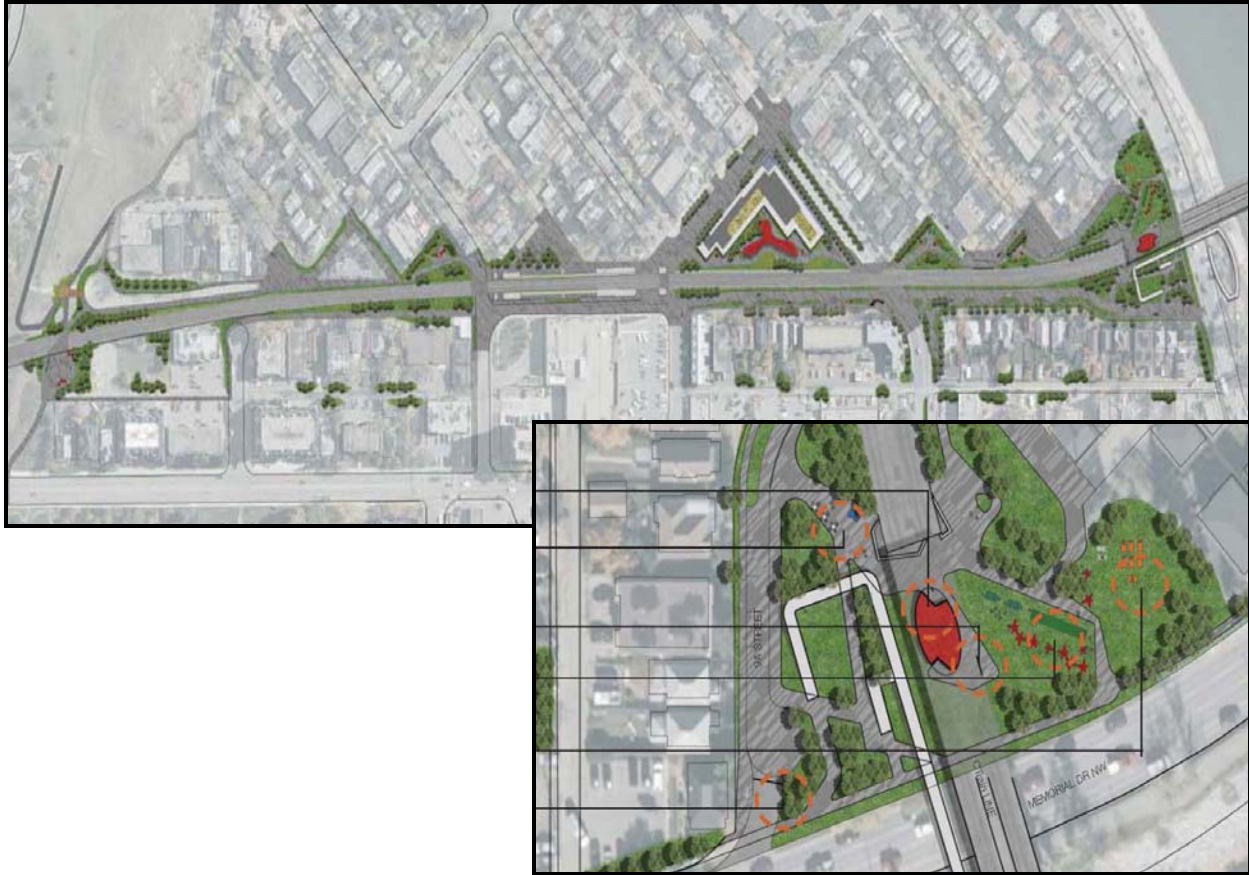
Status: Awaiting funding and initiation.

Benefits: Priddis Slough offers the opportunity to develop a new style of natural environment regional park based on a natural wetland complex including integrated urban storm water management.

October 2014



Enmax Legacy Parks Program 3 — Bow To Bluff Park



Bow to Bluff Project, Sunnyside Community

Project: This project falls under the new criteria of improving local open space. Bow to Bluff was a community led improvement plan completed in 2012. A number of high priority park improvements were identified for a series of 'triangle' parks created through the development of the LRT through the community.

Budget: \$5.92M.

Timeline: Plan is approved through Council and awaiting funding.

Status: On hold pending funding.

Benefits: This project meets the new local open space criteria. It is an opportunity to implement timely deliverables which is important in maintaining community momentum and in demonstrating support and responsiveness to community initiatives.

October 2014

Enmax Legacy Parks Program 3 — Paskapoo Slopes Park



Paskapoo Slopes

Project: In 1994, the *Urban Parks Master Plan* identified the naturally forested river valley stands of the Paskapoo Slopes as a future desired park. The development of a Concept for the park and Environmental Reserve (ER) lands has been drafted. This area has increasing uncontrolled access and use of the slopes which will detrimentally affect the environment.

Budget: Estimated initial phase of \$2.93M on current City lands.

Timeline: To be determined.

Phased plan should address adjacent landowner interface.

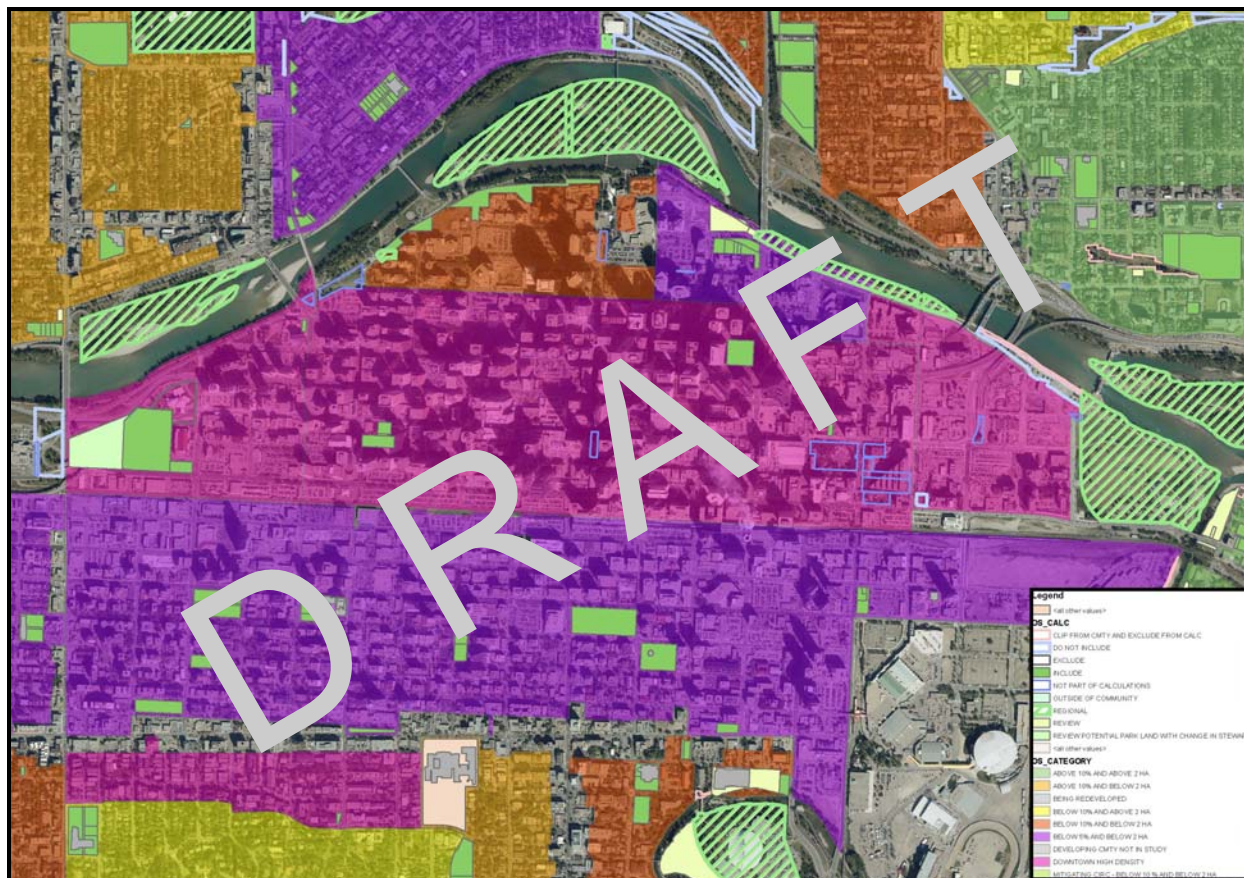
Status: Design Development Plan draft completed, based on currently held City lands.

Benefits: A virtual extension of the Douglas Fir slopes, this dramatic landscape is an exceptional remnant landscape in Calgary and was identified for conservation more than 15 years ago.

October 2014



Enmax Legacy Parks Program 3 — Local Open Space Acquisition Fund



Open Space Analysis

Project: Identify the top communities that are undersupplied in park lands (ie: less than 10% Municipal Reserve (MR), no immediate adjacency to regional parks, river-valleys or other open space) and secure funding to leverage into land acquisition or tenancy opportunities. This would provide the ability to acquire lands that would increase park spaces in communities, which are at the same time experiencing increasing densities (i.e. Beltline). Having funding in place is critical in order to be in a position to negotiate real estate deals in a timely manner when properties become available on the market.

Budget: \$3M.

Timeline: Based on opportunity land acquisitions and future funding decisions.

Status: Awaiting initiation.

Benefits: New community parks will greatly increase locally accessible park space for citizens in communities with limited open space.

October 2014



Enmax Legacy Parks Program 3 — Century Gardens



Century Gardens

Project: Century Gardens, a cultural landscape, was built almost 50 years ago. It is in need of refurbishment. The 0.6 hectare downtown site has been in negotiations with the adjacent commercial land owners over several years, now resolving to adjacent development plans. The concept for the redeveloping site has been finalized and the Design Development Plan (DDP) is almost complete. The estimated construction budget is \$13M. Parks has approved capital funding of \$3.5M but that is insufficient to upgrade the park.

Budget: \$9.69M.

Timeline: The final concept has been determined. The DDP is close to completion.

Status: Capital construction is pending design resolution and budget confirmation is dependant on adjacent private landowner redevelopment timing.

Benefits: Century Gardens is in a prime downtown location. When renovated, the site will be able to host festivals and events as part of west downtown vitality.

October 2014

