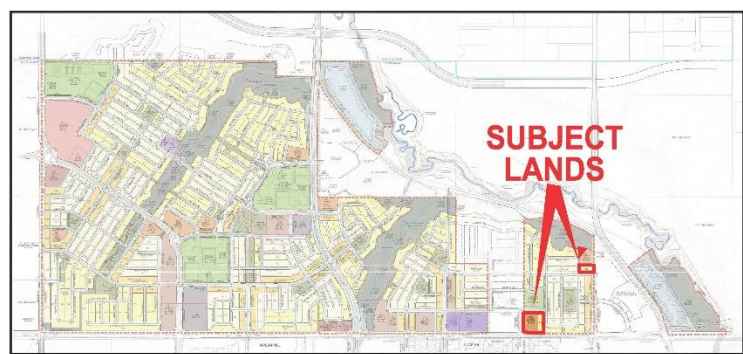
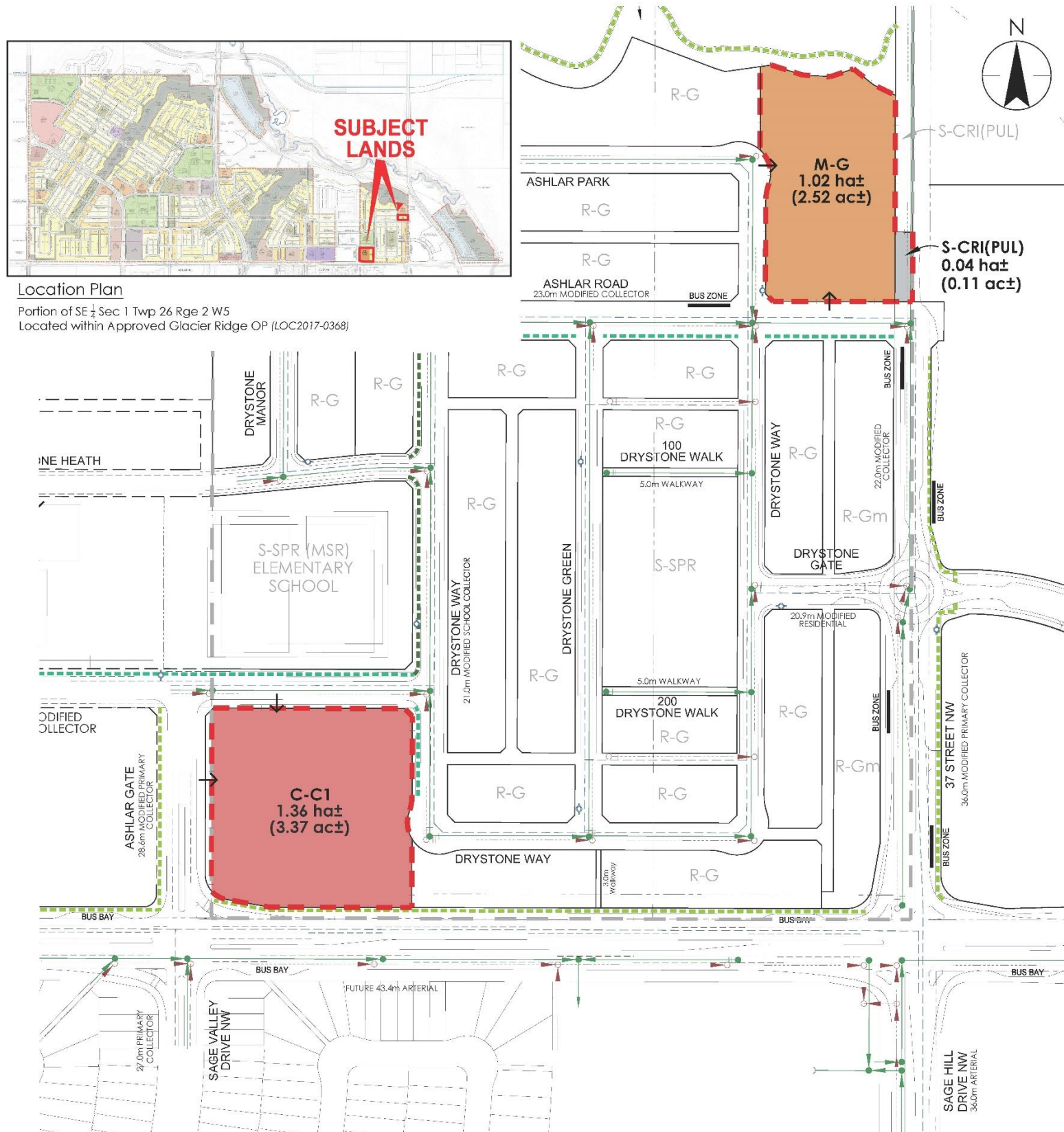
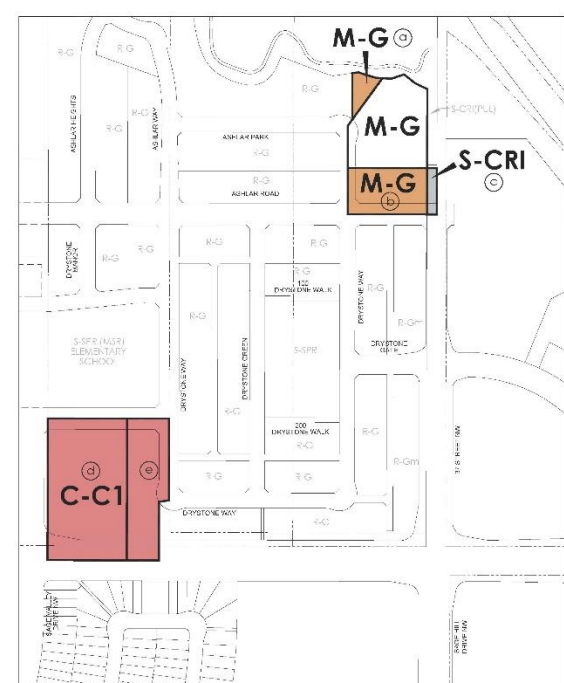


Proposed Outline Plan



Location Plan
Portion of SE 1/4 Sec 1 Twp 26 Rge 2 W5
Located within Approved Glacier Ridge OP (LOC2017-0368)



Proposed Land Use
NTS

Outline Plan Statistics

Total Area Outlined	2.42 ha± (6.00 ac±)
M-G	1.02 ha± (2.52 ac±)
Ant. No. of Units (60 upha)	61 lots±
Max. No. of Units (80 upha)	81 lots±
C-C1	1.36 ha± (3.37 ac±)
S-CRI	0.04 ha± (0.11 ac±)

Anticipated Density: $\frac{61}{2.42 \text{ ha} \pm (6.00 \text{ ac} \pm)} = 25.20 \text{ upha} \pm (10.16 \text{ upac} \pm)$

Maximum Density: $\frac{81}{2.42 \text{ ha} \pm (6.00 \text{ ac} \pm)} = 33.47 \text{ upha} \pm (13.50 \text{ upac} \pm)$

Land Use Redesignation Statistics

Ⓐ R-G to M-G	0.08 ha± (0.20 ac±)
Ⓑ R-G to M-G	0.41 ha± (1.02 ac±)
Ⓒ R-G to S-CRI	0.05 ha± (0.13 ac±)
Ⓓ M-G to C-C1	1.26 ha± (3.12 ac±)
Ⓔ R-G to C-C1	0.60 ha± (1.49 ac±)
Total Redesignation Area	2.40 ha± (5.96 ac±)
M-G to Remain M-G	0.70 ha± (1.73 ac±)
Total Redesignation Area	3.10 ha± (7.69 ac±)

Legend

Amendment Boundary	- - - - -
Hydrant	⊕
Sanitary Sewer	—○—
Storm Sewer	—●—
Water Lines	—□—
Potential Access	→
Regional Pathway	⋯⋯⋯
Multi-Use Pathway	⋯⋯⋯



Project Information		
LOC2022-0075		
Revision		
NO	DATE	DESCRIPTION
1	03-05-2022	Submission
2	04-08-2022	DTR1 Submission

GLACIER RIDGE Outline & Land Use Redesignation Plan

PREPARED FOR: SHANE COMMUNITIES

\\cpc2023\workgroup\1165\active\11650822\2023\drawing\LOC_04_outline_plan\04_outline_plan.dwg



116500820
August 2022

CONCEPT ONLY: THIS DRAWING IS AN ARTISTIC REPRESENTATION OF DESIGN PREPARED BY STANTEC CONSULTING LTD. IT IS CONCEPTUAL IN NATURE AND SUBJECT TO CHANGE. COPYRIGHT RESERVED.