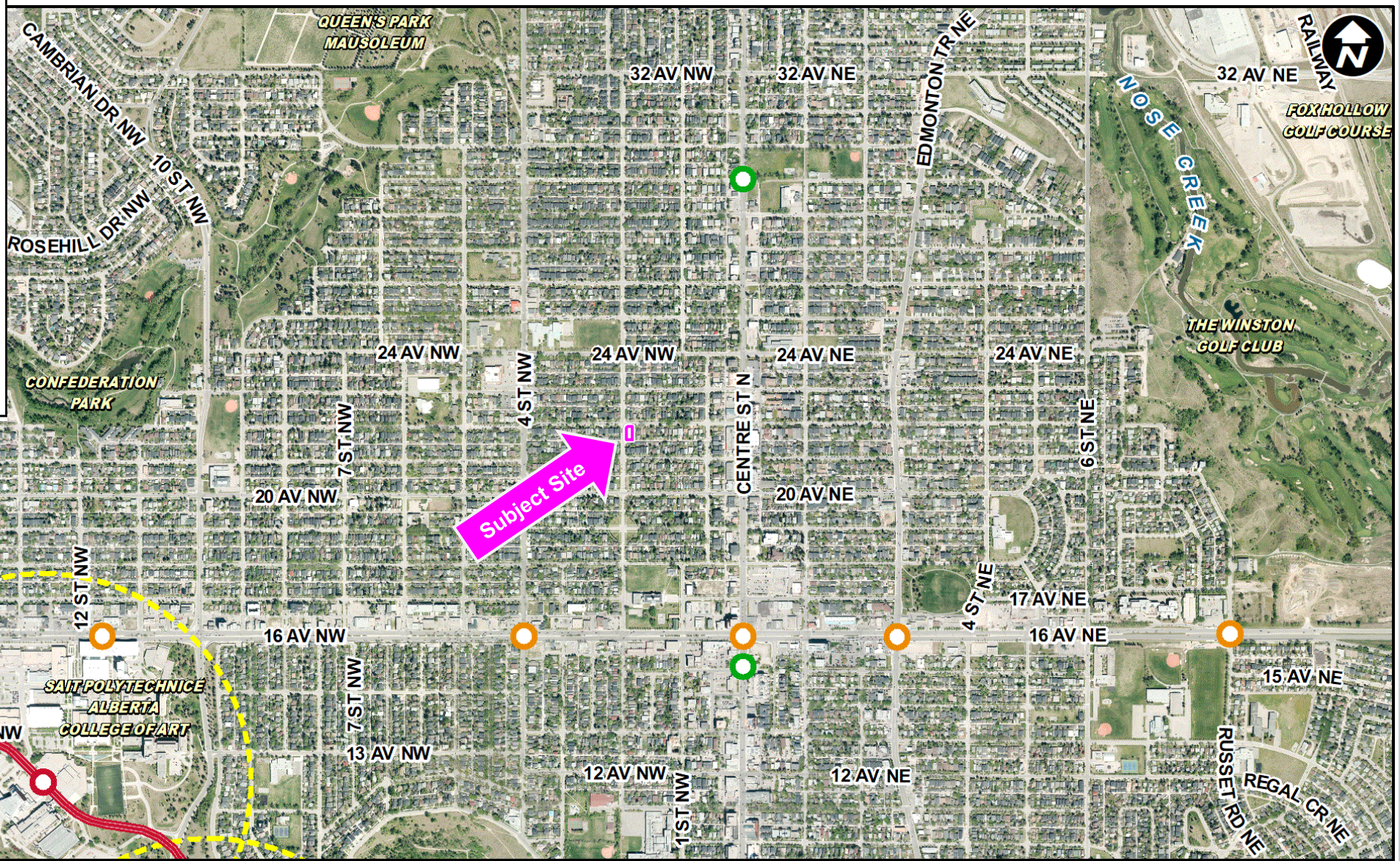
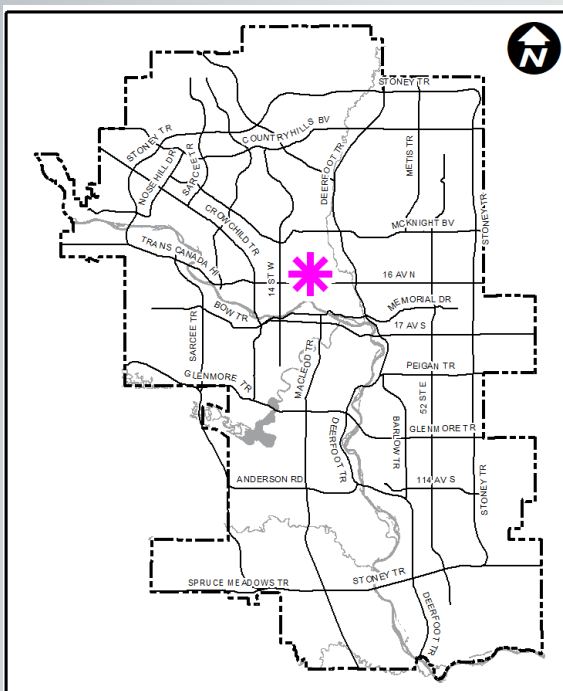
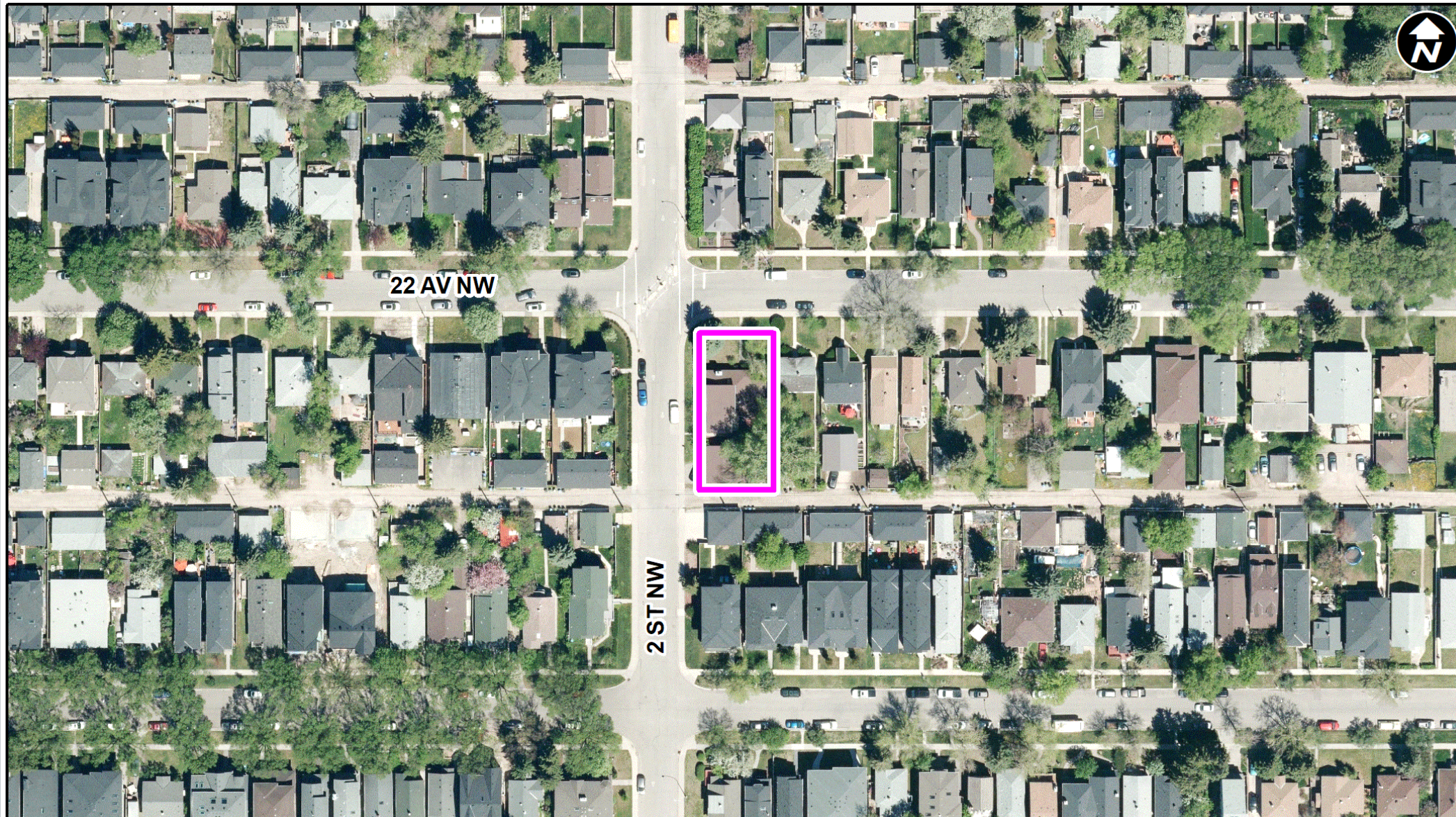


LOC2022-0168
Land Use Amendment
December 1, 2022



- LEGEND**
- 600m buffer from LRT station
 - LRT Stations**
 - Blue
 - Downtown
 - Red
 - Green (Future)
 - LRT Line**
 - Blue
 - Blue/Red
 - Red
 - Max BRT Stops**
 - Orange
 - Purple
 - Teal
 - Yellow



Parcel Size:

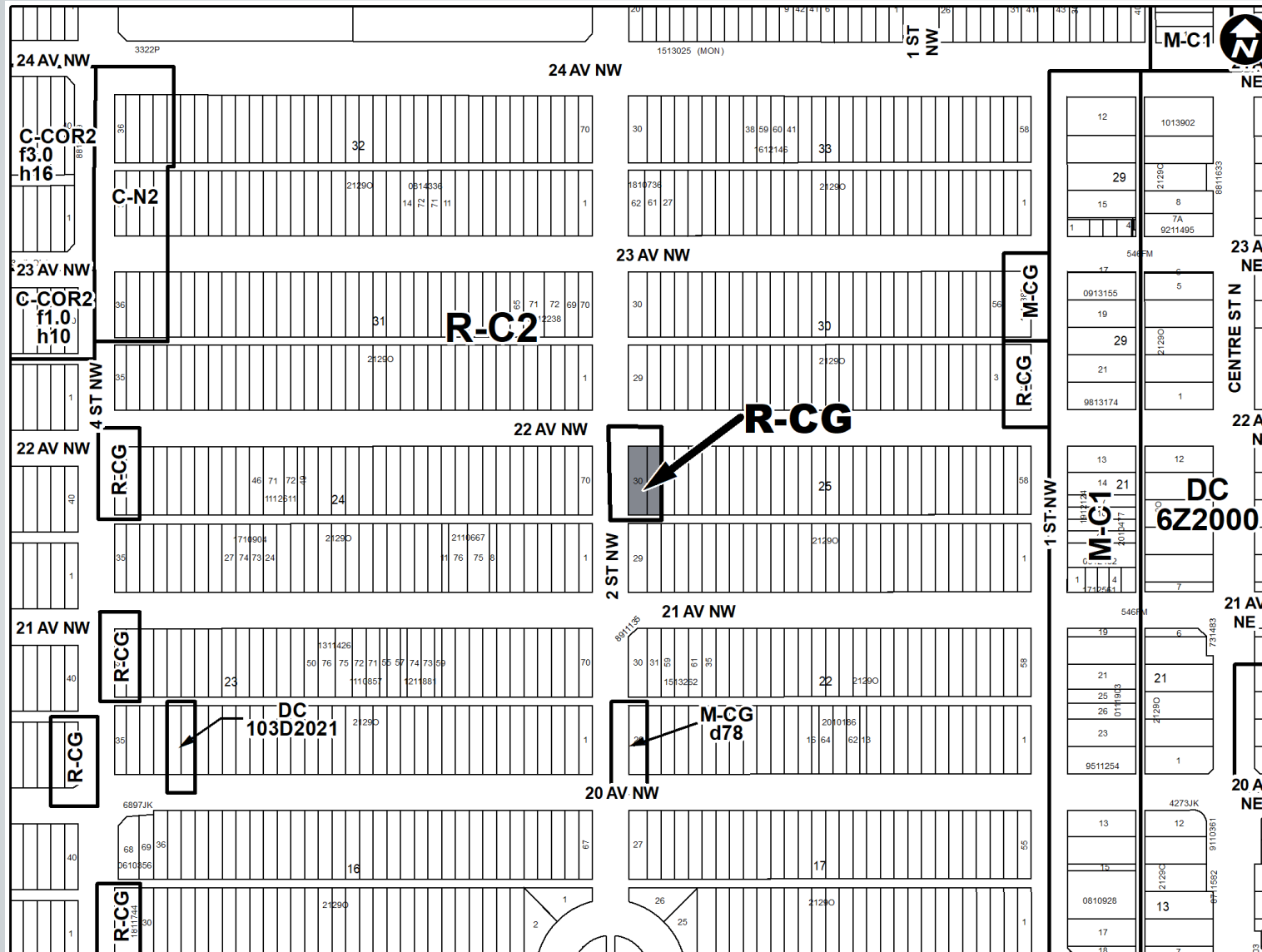
0.07 ha
38m x 18m











Proposed R-CG District:

- Up to five dwelling units
- Maximum building height of 11 metres (approx. 3 storeys)

RECOMMENDATION:

That Calgary Planning Commission recommend that Council:

Give three readings to the proposed bylaw for the redesignation of 0.07 hectares \pm (0.17 acres \pm) located at 257 22 Avenue NW (Plan 2129O, Block 25, Lots 30 and 31) from Residential – Contextual One / Two Dwelling (R-C2) District **to** Residential – Grade Oriented Infill (R-CG) District.