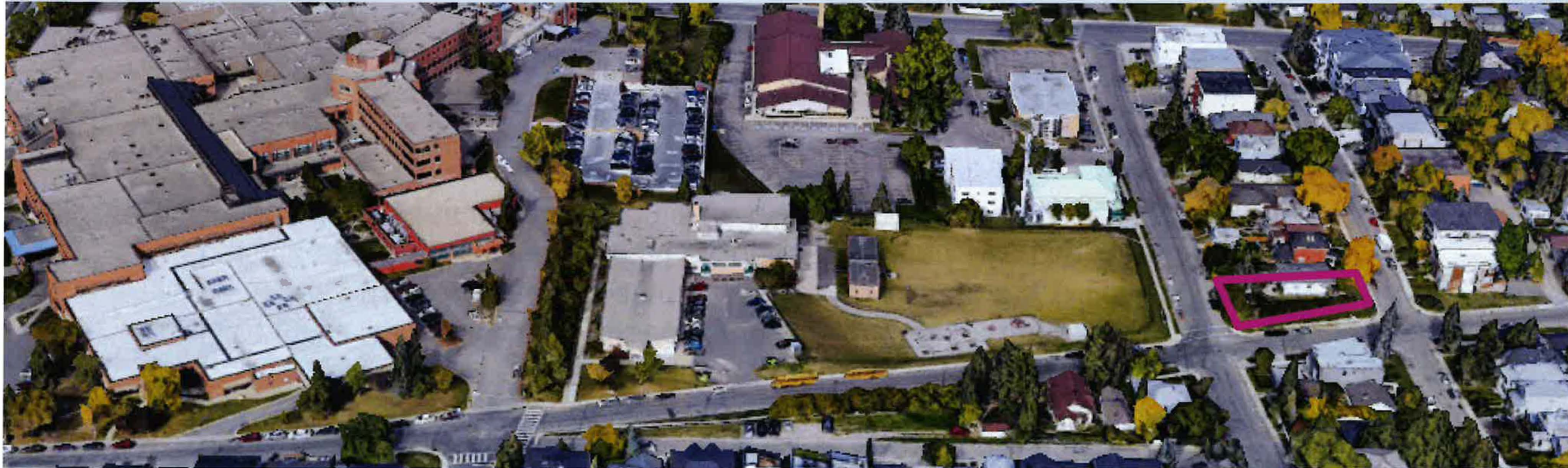




Public Hearing of Council

Agenda Item: 8.1.3



LOC2021-0168 / CPC2022-0946 Policy and Land Use Amendment

November 1, 2022

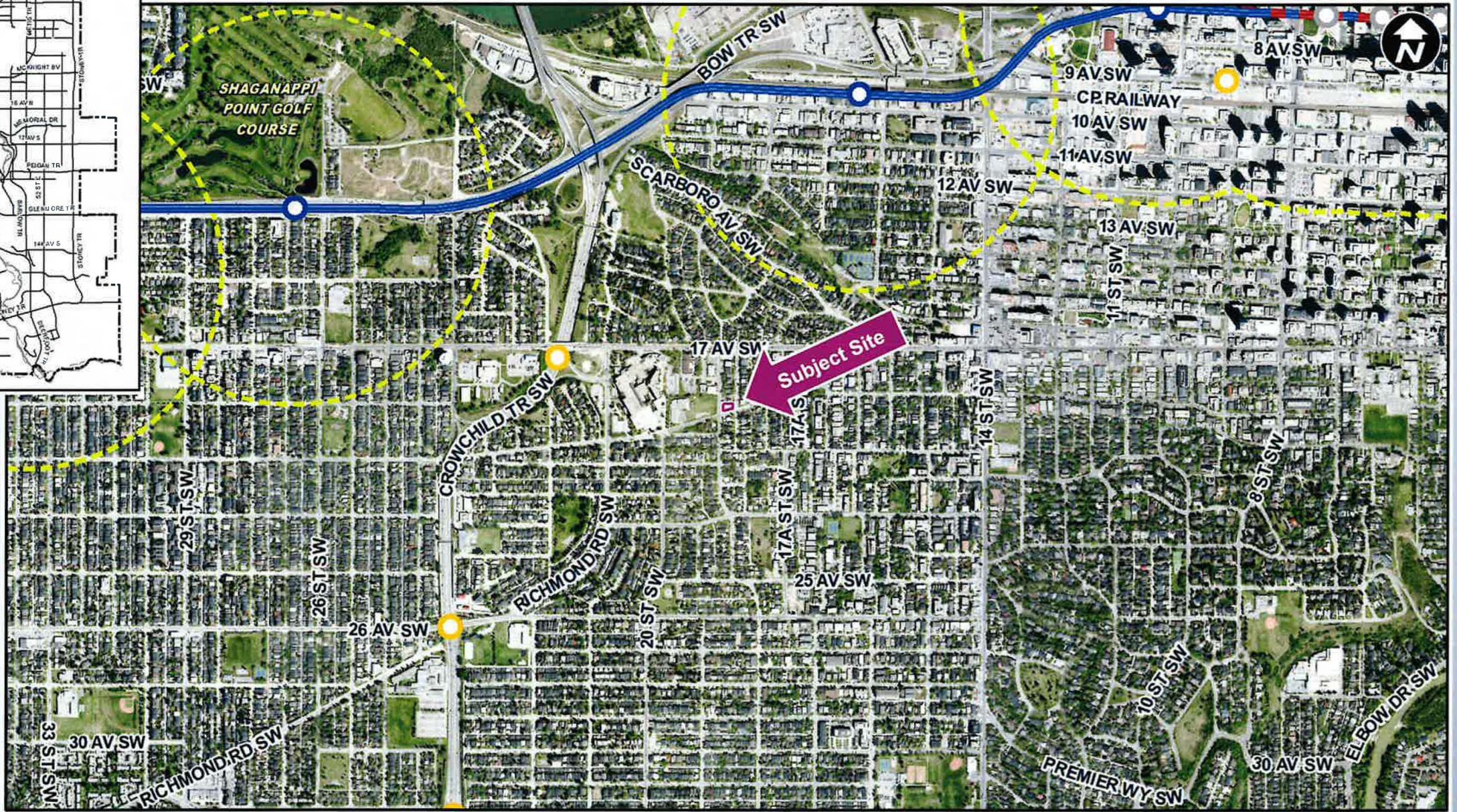
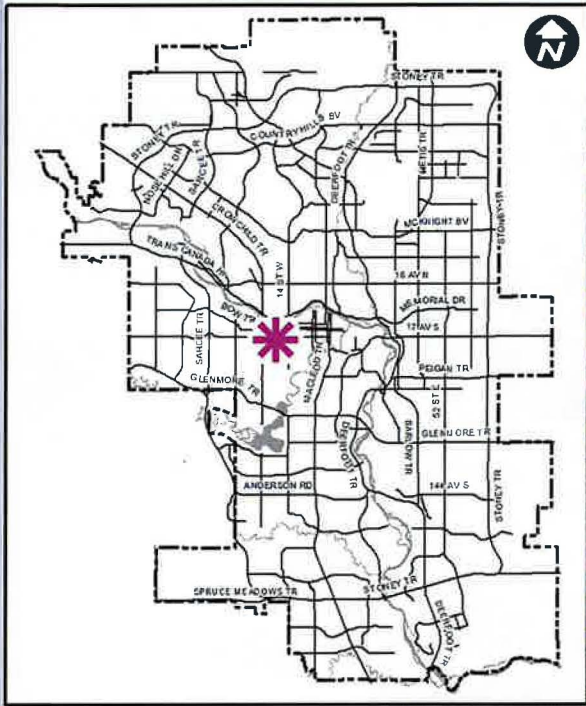
CITY OF CALGARY
RECEIVED
IN COUNCIL CHAMBER
NOV 01 2022
ITEM: 8.1.3 CPC2022-0946
Distribution: Confidential
CITY CLERK'S DEPARTMENT

Calgary Planning Commission's Recommendation:

That Council:

1. Give three readings to **Proposed Bylaw 58P2022** for the amendments to the Bankview Redevelopment Plan (Attachment 2); and
2. Give three readings to **Proposed Bylaw 155D2022** for the redesignation of 0.06 hectares \pm (0.14 acres \pm) located at 1845 – 18A Street SW (Plan 3076AB, Block 4, Lots 22 and 23) from Residential – Contextual One / Two Dwelling (R-C2) District to Residential – Grade-Oriented Infill (R-CG) District





LEGEND

- 600m buffer from LRT station
- LRT Stations**
- Blue
- Downtown
- Red
- Green (Future)
- LRT Line**
- Blue
- Blue/Red
- Red
- Max BRT Stops**
- Orange
- Purple
- Teal
- Yellow



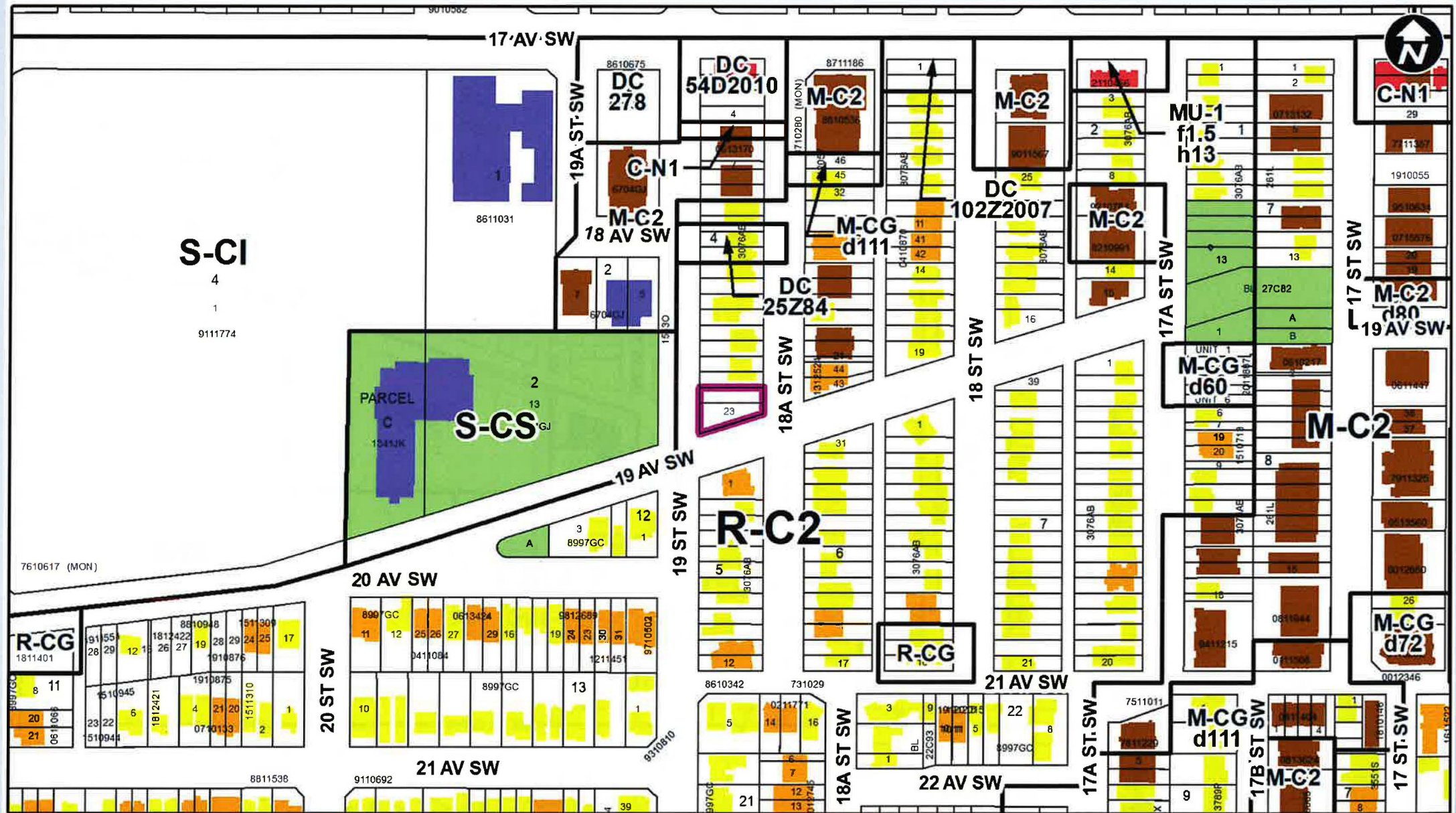
○ Bus Stop

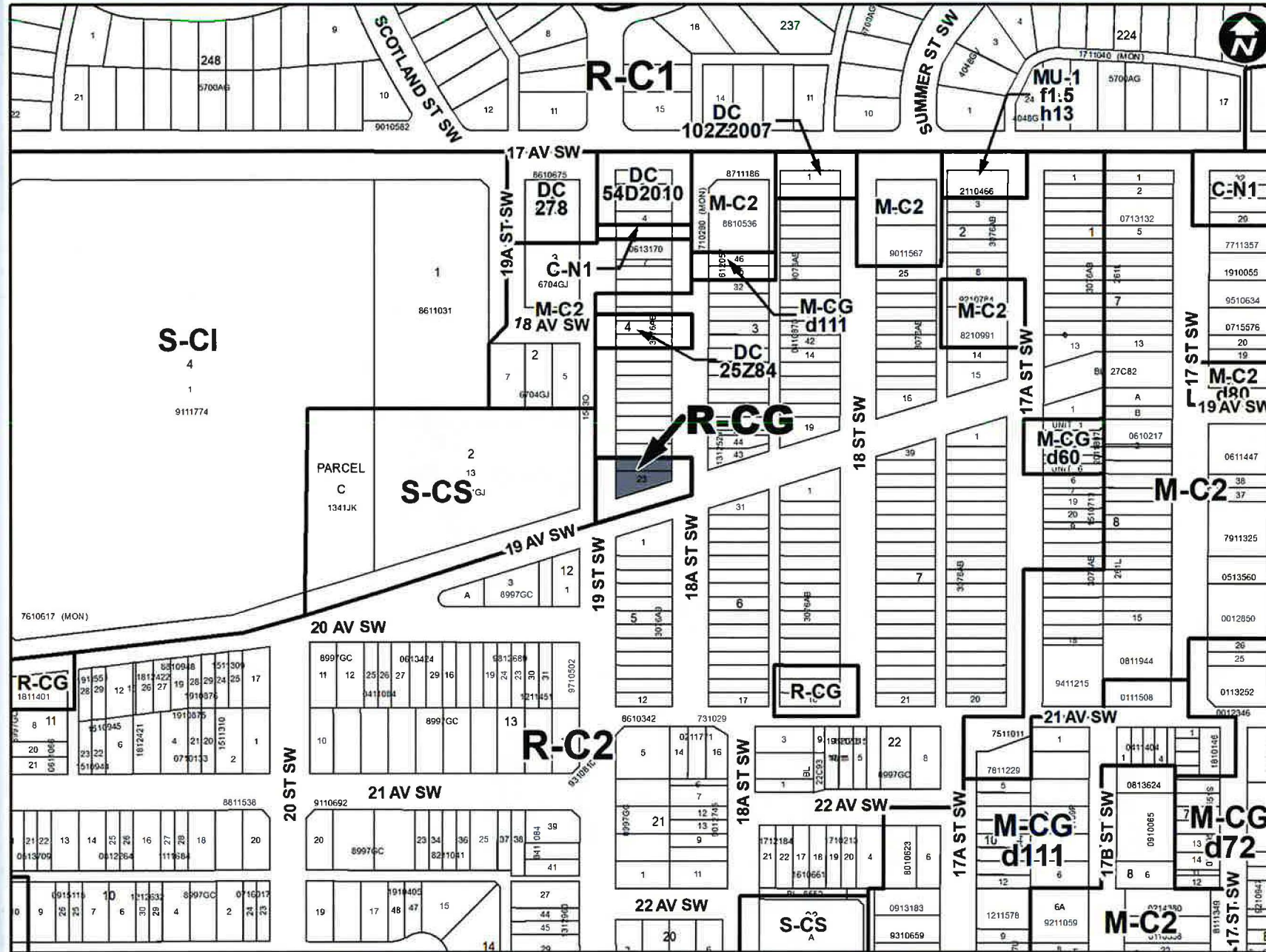
Parcel Size:

**0.06 ha
31 m x 18 m**

LEGEND

- Single detached dwelling
- Semi-detached / duplex detached dwelling
- Rowhouse / multi-residential
- Commercial
- Heavy Industrial
- Light Industrial
- Parks and Openspace
- Public Service
- Service Station
- Vacant
- Transportation, Communication, and Utility
- Rivers, Lakes
- Land Use Site Boundary



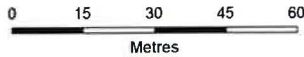


Bankview Area Redevelopment Plan

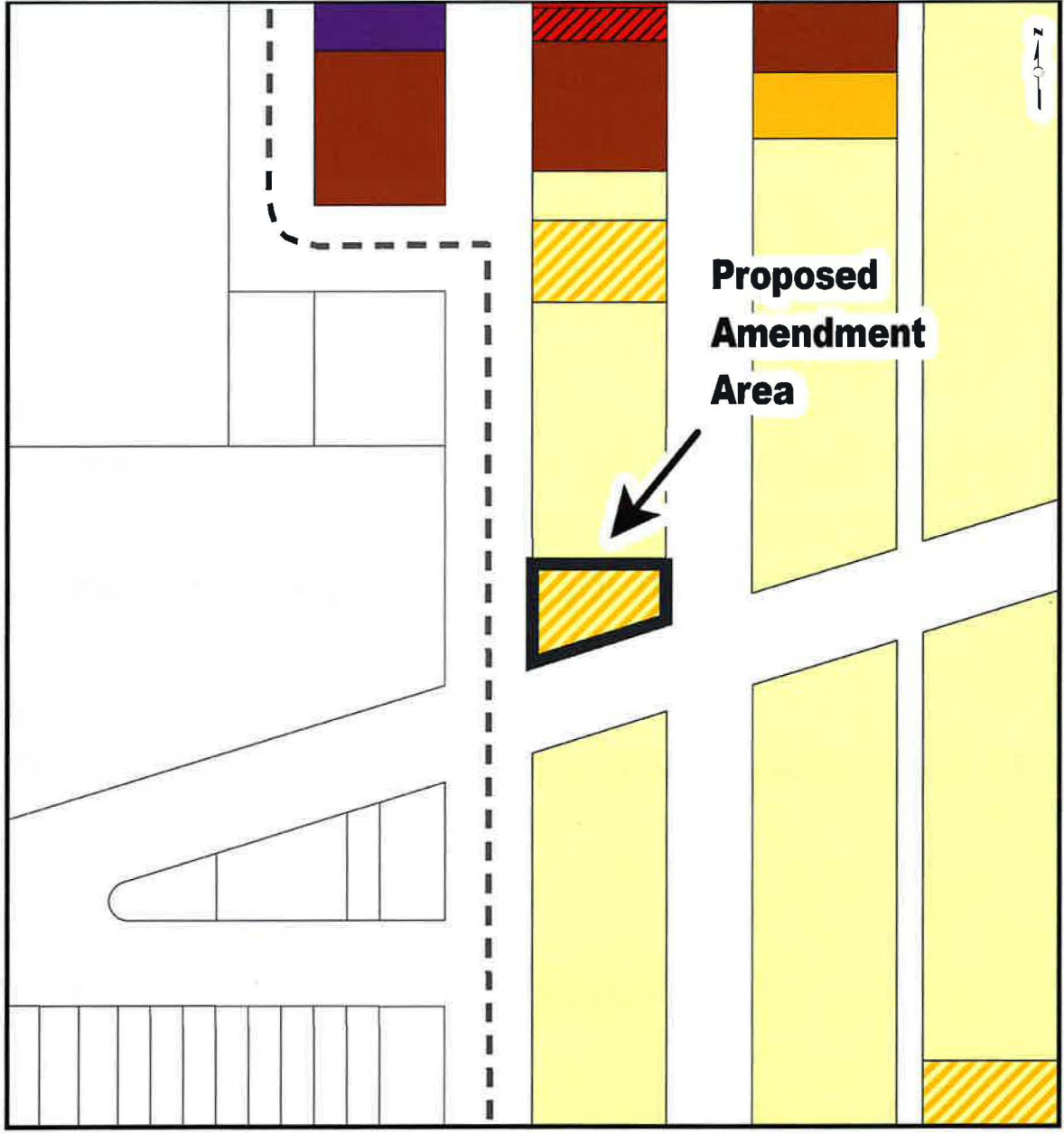
Fig. 2

Land Use Policy

- Legend**
-  Study Area Boundary
 -  Conservation
 -  Conservation and Infill
 -  Medium Low Density
 -  Medium Density
 -  Local Commercial
 -  General Commercial
 -  Institutional



This map is conceptual only. No measurements of distances or areas should be taken from this map.



Calgary Planning Commission's Recommendation:

That Council:

1. Give three readings to **Proposed Bylaw 58P2022** for the amendments to the Bankview Redevelopment Plan (Attachment 2); and
2. Give three readings to **Proposed Bylaw 155D2022** for the redesignation of 0.06 hectares \pm (0.14 acres \pm) located at 1845 – 18A Street SW (Plan 3076AB, Block 4, Lots 22 and 23) from Residential – Contextual One / Two Dwelling (R-C2) District to Residential – Grade-Oriented Infill (R-CG) District





