



# Public Hearing of Council

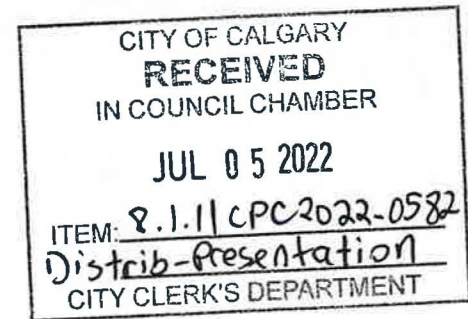
Agenda Item: 8.1.11

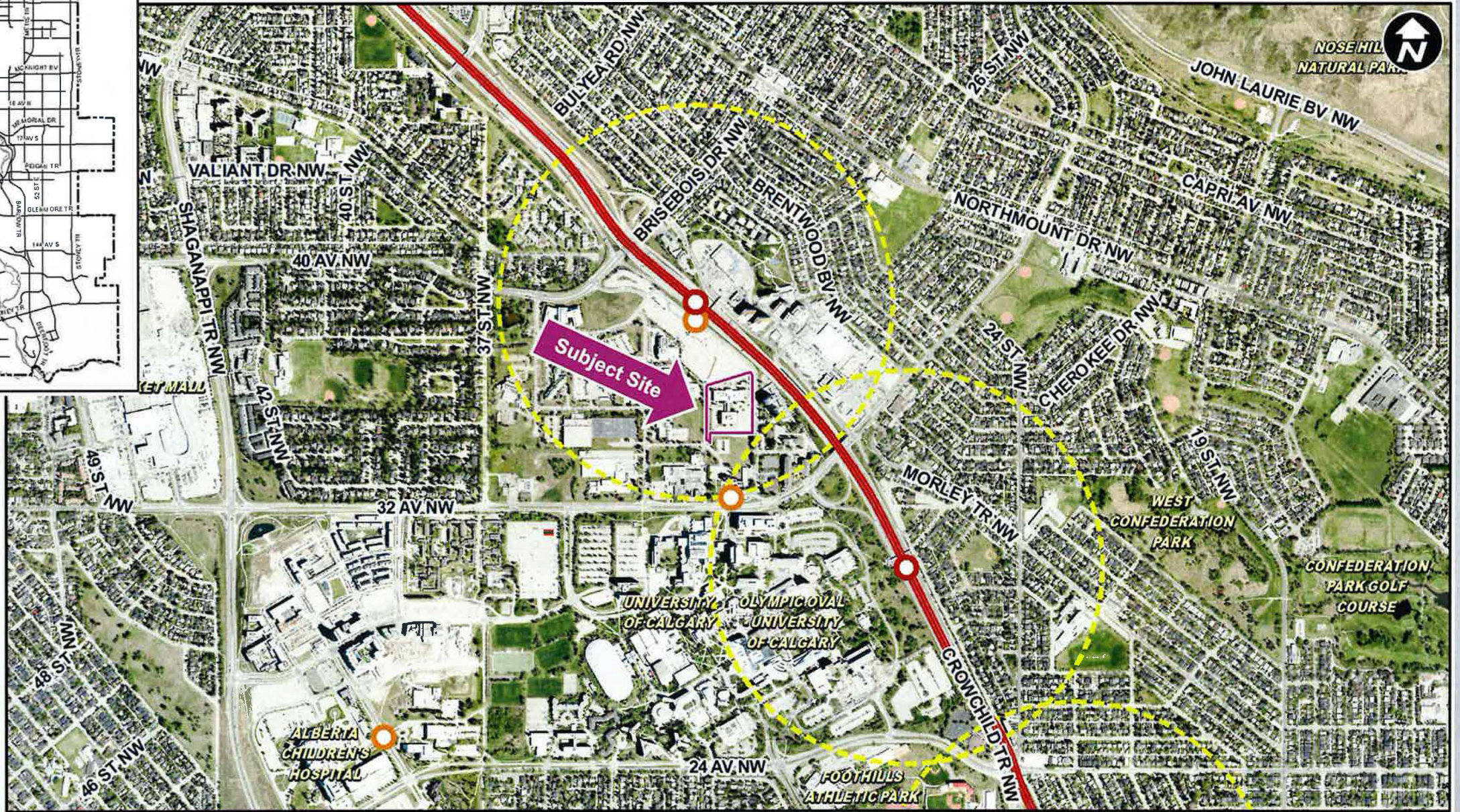
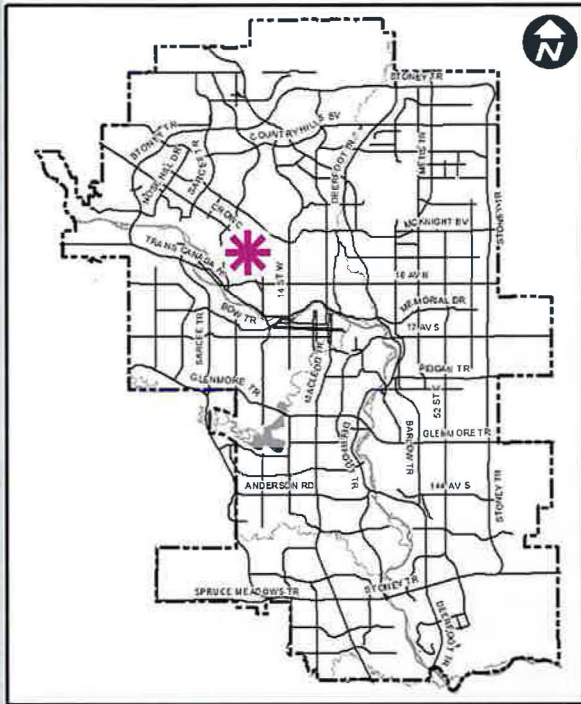


**LOC2022-0067 / CPC2022-0582**

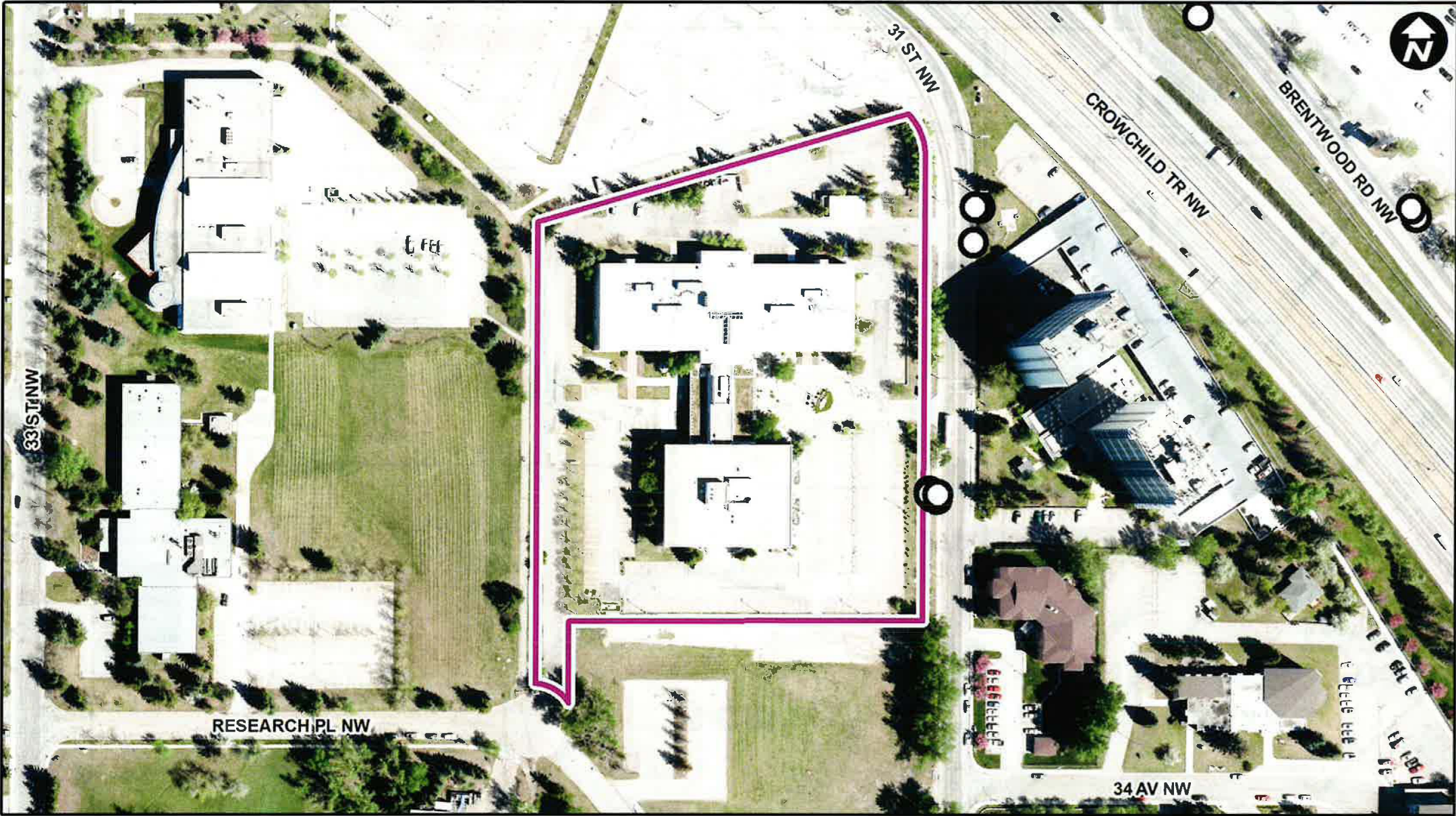
**Land Use Amendment**

July 5, 2022



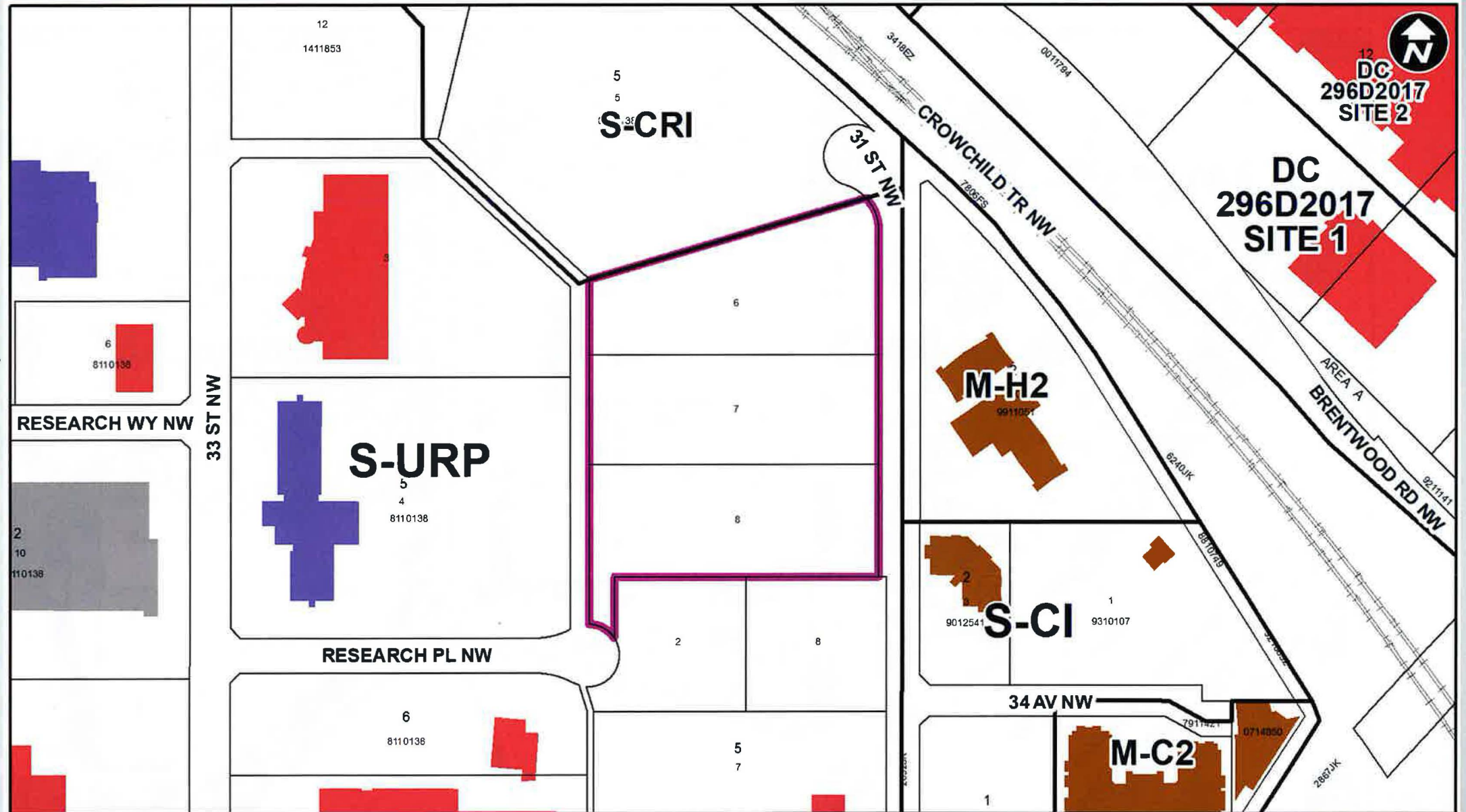


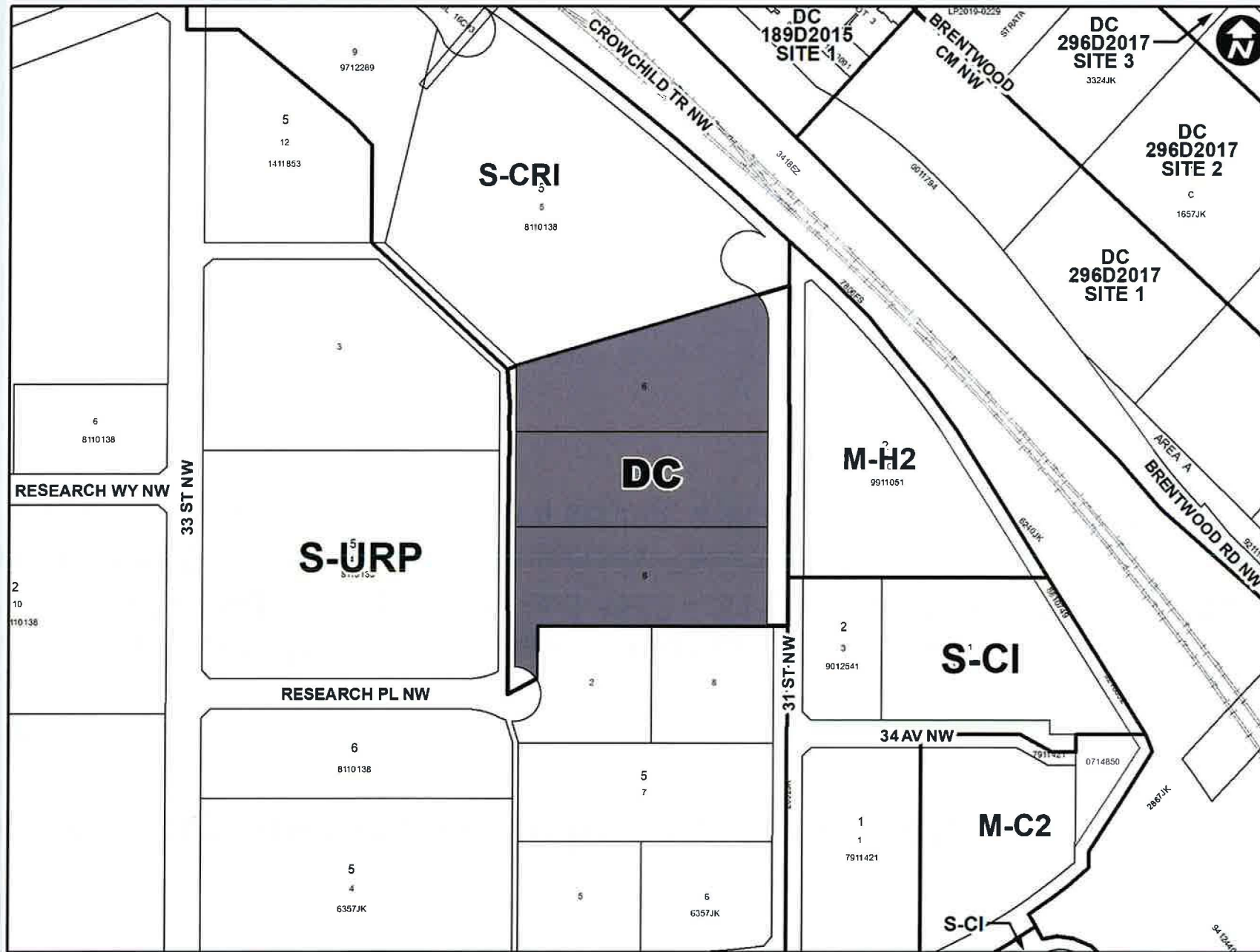
- LEGEND**
- 600m buffer from LRT station
  - LRT Stations**
    - Blue
    - Downtown
    - Red
    - Green (Future)
  - LRT Line**
    - Blue
    - Blue/Red
    - Red
  - Max BRT Stops**
    - Orange
    - Purple
    - Teal
    - Yellow



**LEGEND**

- Single detached dwelling
- Semi-detached / duplex detached dwelling
- Rowhouse / multi-residential
- Commercial
- Heavy Industrial
- Light Industrial
- Parks and Openspace
- Public Service
- Service Station
- Vacant
- Transportation, Communication, and Utility
- Rivers, Lakes
- Land Use Site Boundary





## Calgary Planning Commission's Recommendation:

That Council:

Give three readings to **Proposed Bylaw 104D2022** for the redesignation of 2.36 hectares  $\pm$  (5.83 acres  $\pm$ ) located at 3515, 3535, and 3553 – 31 Street NW (Plan 8110138, Block 5, Lots 6, 7 and 8) from Special Purpose – University Research Park (S-URP) District to Direct Control (DC) District to accommodate a school, with guidelines (Attachment 2).

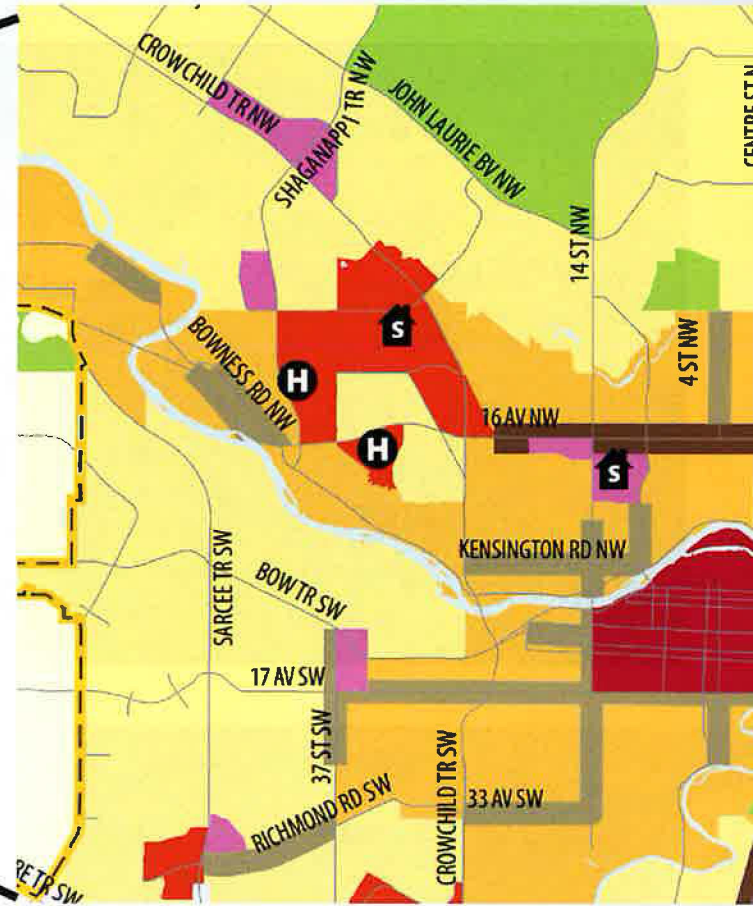
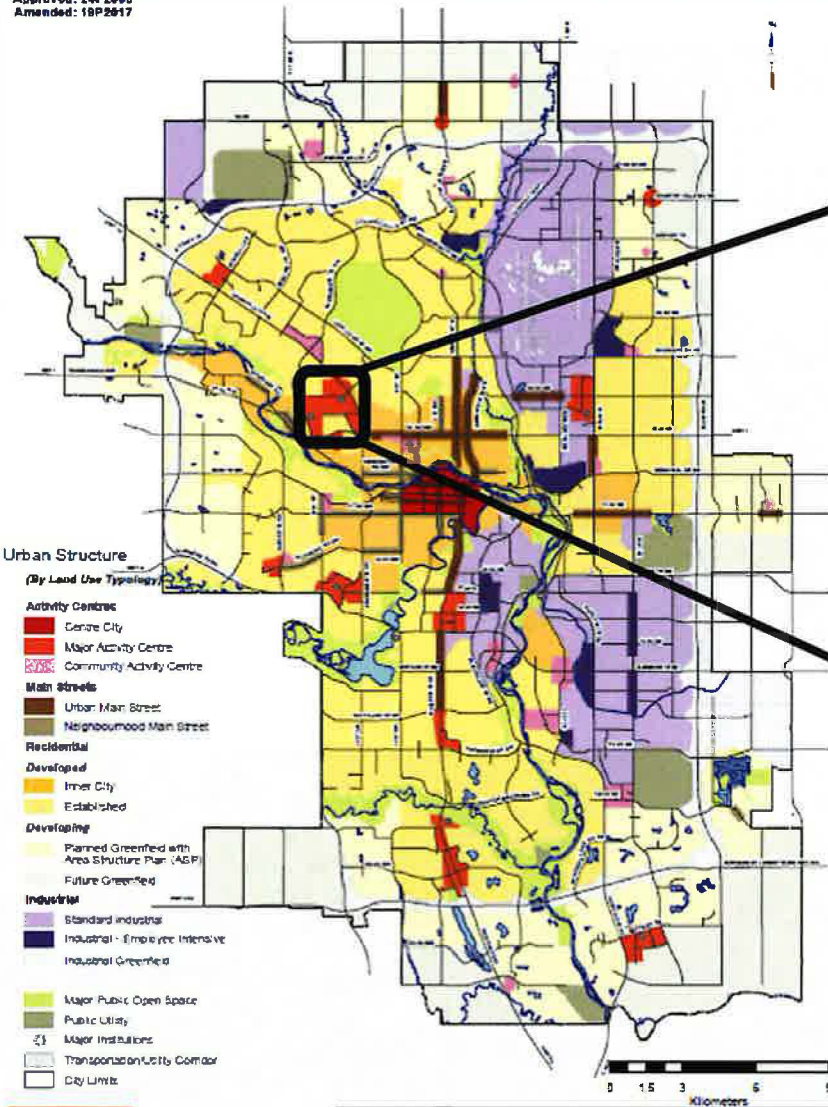
## Supplementary Slides







Approved: 24P2008  
Amended: 18P2017



**1 Urban Structure**

This map represents a conceptual land use structure and transportation network for the city as a whole. It is not intended to be used to determine the location of individual City investments, as represented on the map, will be made. Site specific assessments, including environmental cooperation, as well as the future financial capabilities of the City of Calgary, must be considered before any and all City investment decisions are made.

1106\_Plan\_2\_Calgary\_Municipal\_Development\_Plan\_Document\_Map\_AMP\_UrbanStructure.mxd



November 2009

# Brentwood Station Area Redevelopment Plan

calgary.ca

call 3-1-1

CALGARY

