



Public Hearing of Council

Agenda Item: 8.1.10

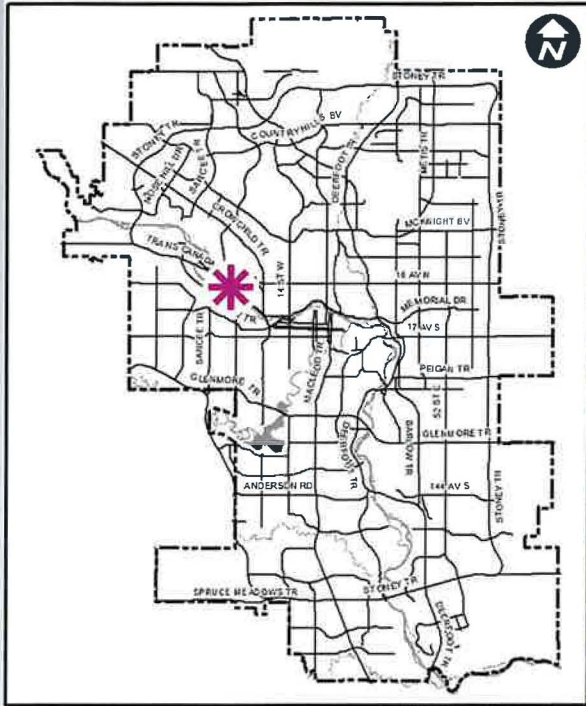


LOC2021-0207 / CPC2022-0507

Land Use Amendment

July 5, 2022

CITY OF CALGARY
RECEIVED
IN COUNCIL CHAMBER
JUL 05 2022
ITEM: 8.1.10 CPC2022-0507
Distrib-Presentation
CITY CLERK'S DEPARTMENT



LEGEND

- 600m buffer from LRT station
- LRT Stations**

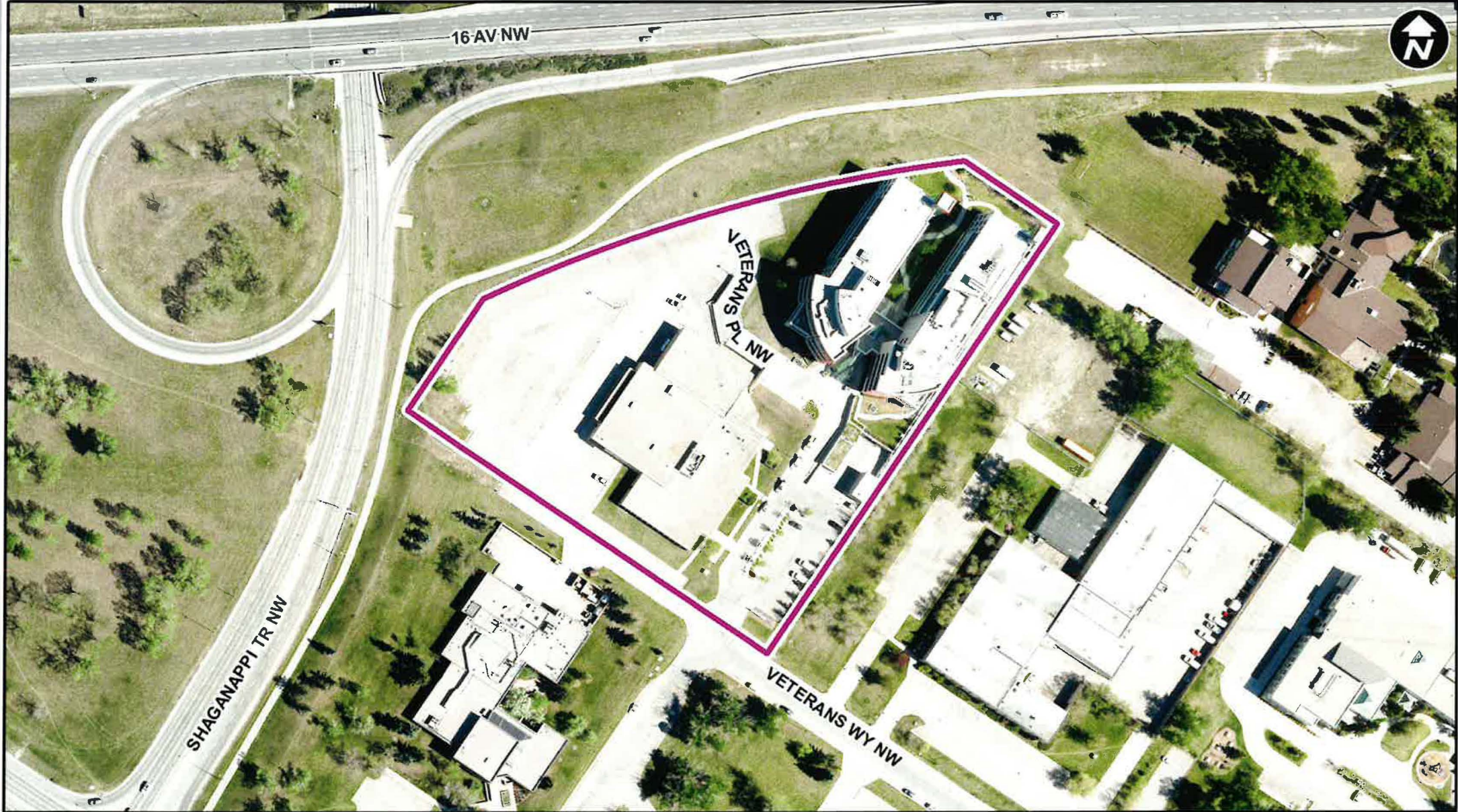
 - Blue
 - Downtown
 - Red
 - Green (Future)

- LRT Line**

 - Blue
 - Blue/Red
 - Red

- Max BRT Stops**

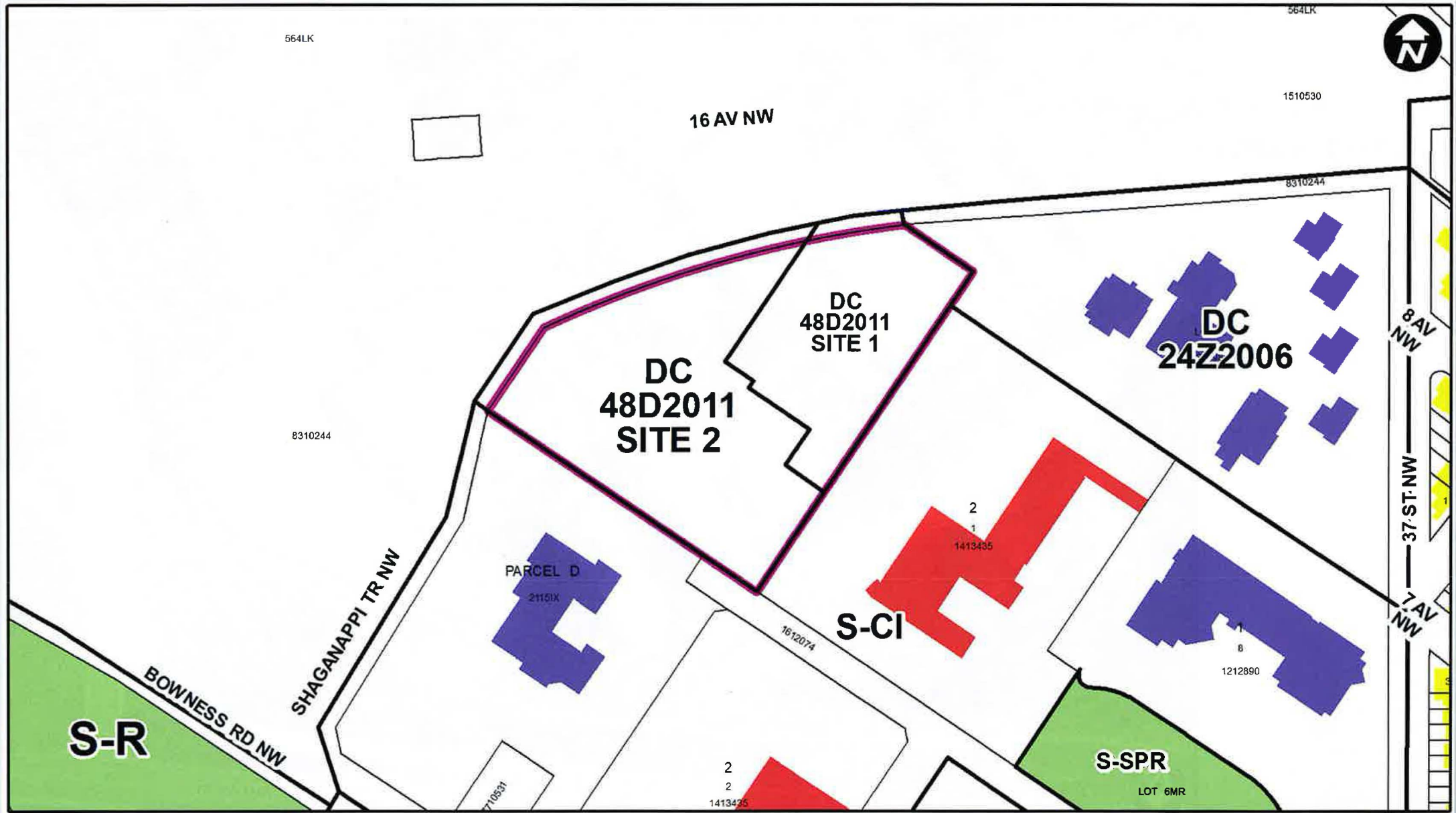
 - Orange
 - Purple
 - Teal
 - Yellow

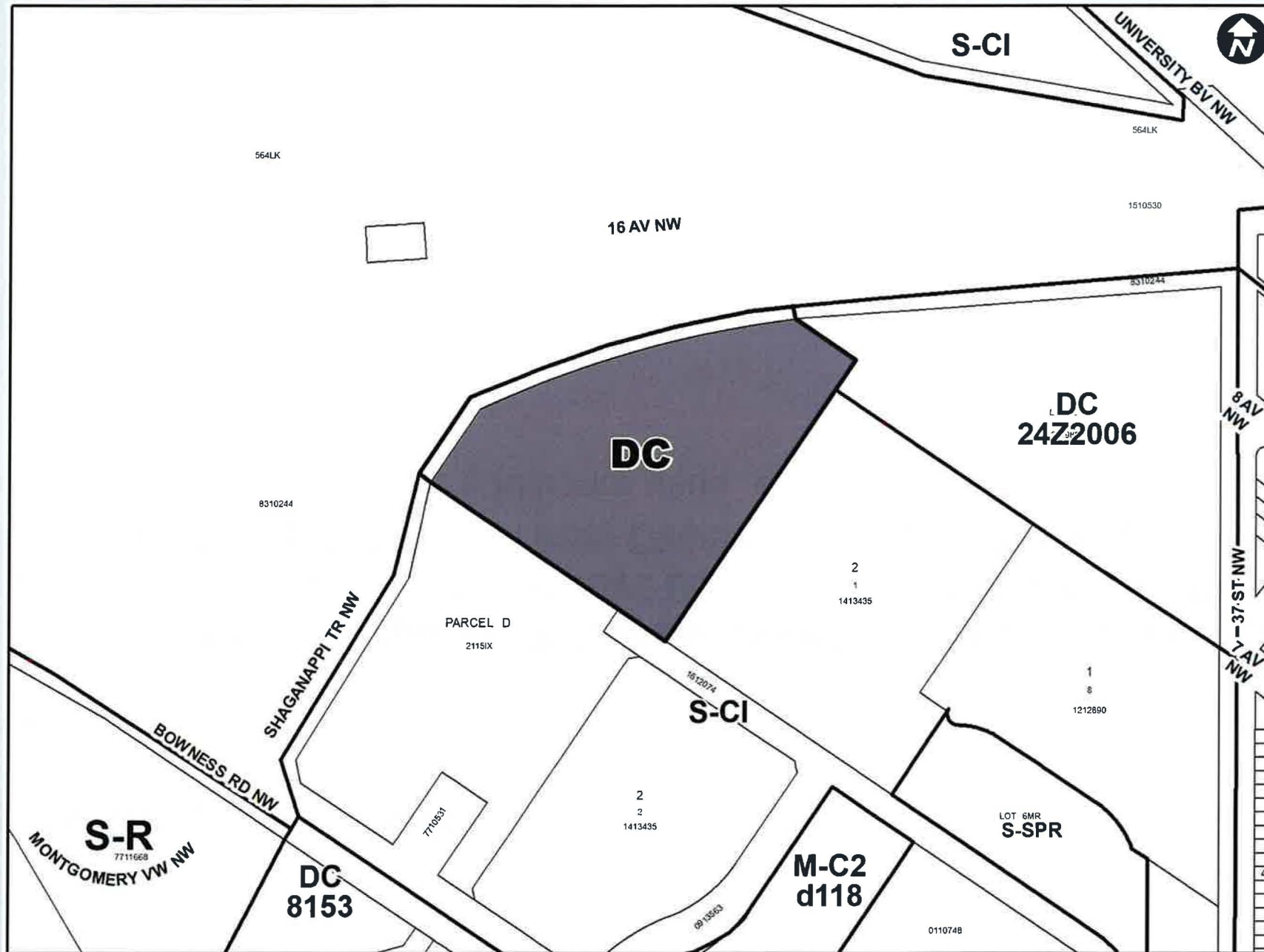


Parcel Size:
2.26 ha

LEGEND

- Single detached dwelling
- Semi-detached / duplex detached dwelling
- Rowhouse / multi-residential
- Commercial
- Heavy Industrial
- Light Industrial
- Parks and Openspace
- Public Service
- Service Station
- Vacant
- Transportation, Communication, and Utility
- Rivers, Lakes
- Land Use Site Boundary





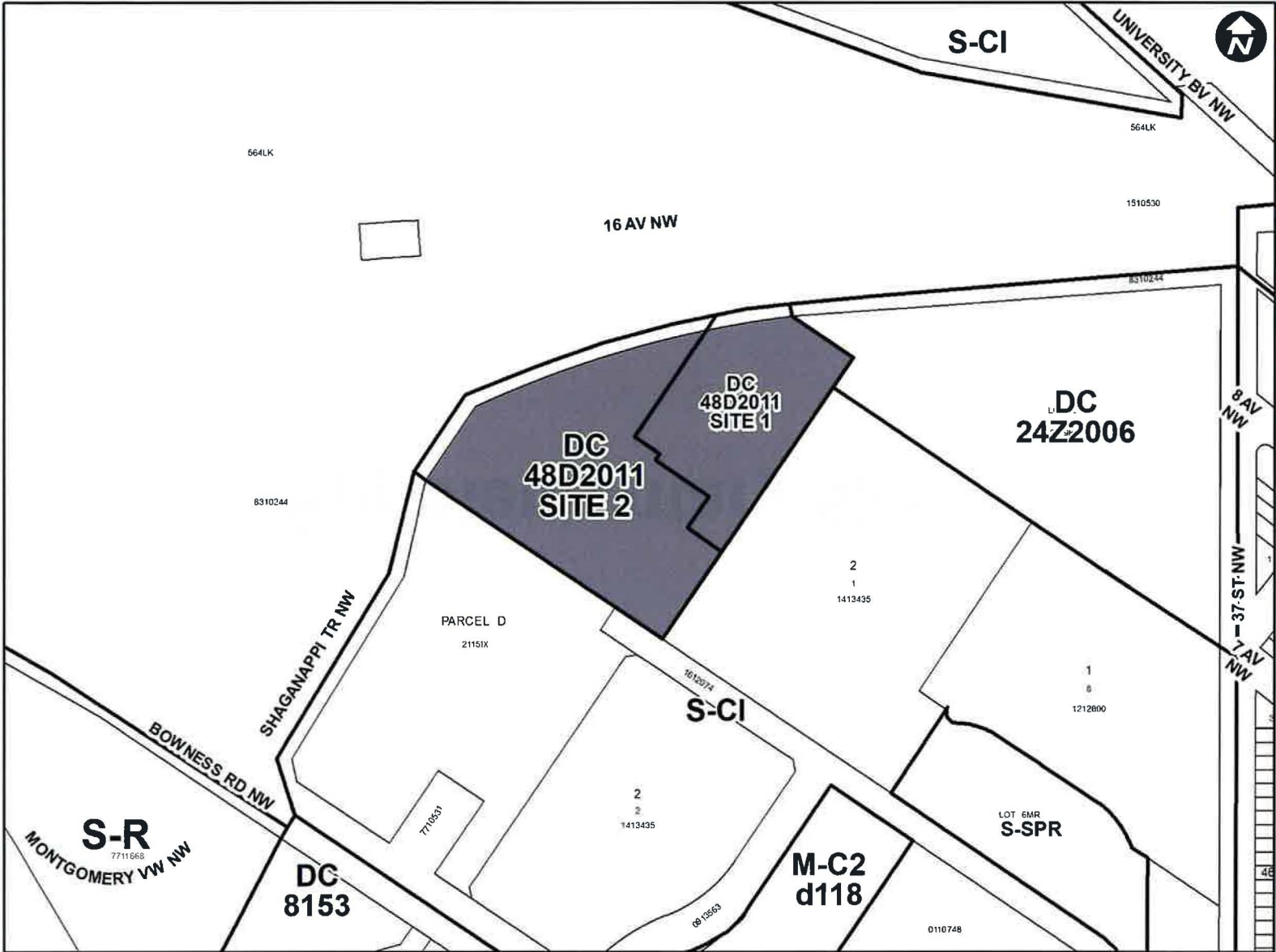
Calgary Planning Commission's Recommendation:

That Council:

Give three readings to **Proposed Bylaw 98D2022** for the redesignation of 2.26 hectares \pm (5.58 acres \pm) located at 4040 Bowness Road NW (Plan 7610566, Maintenance Site Right of Way B) from Direct Control (DC) District **to** Direct Control (DC) District to accommodate additional uses, with guidelines (Attachment 2).



Supplementary Slides

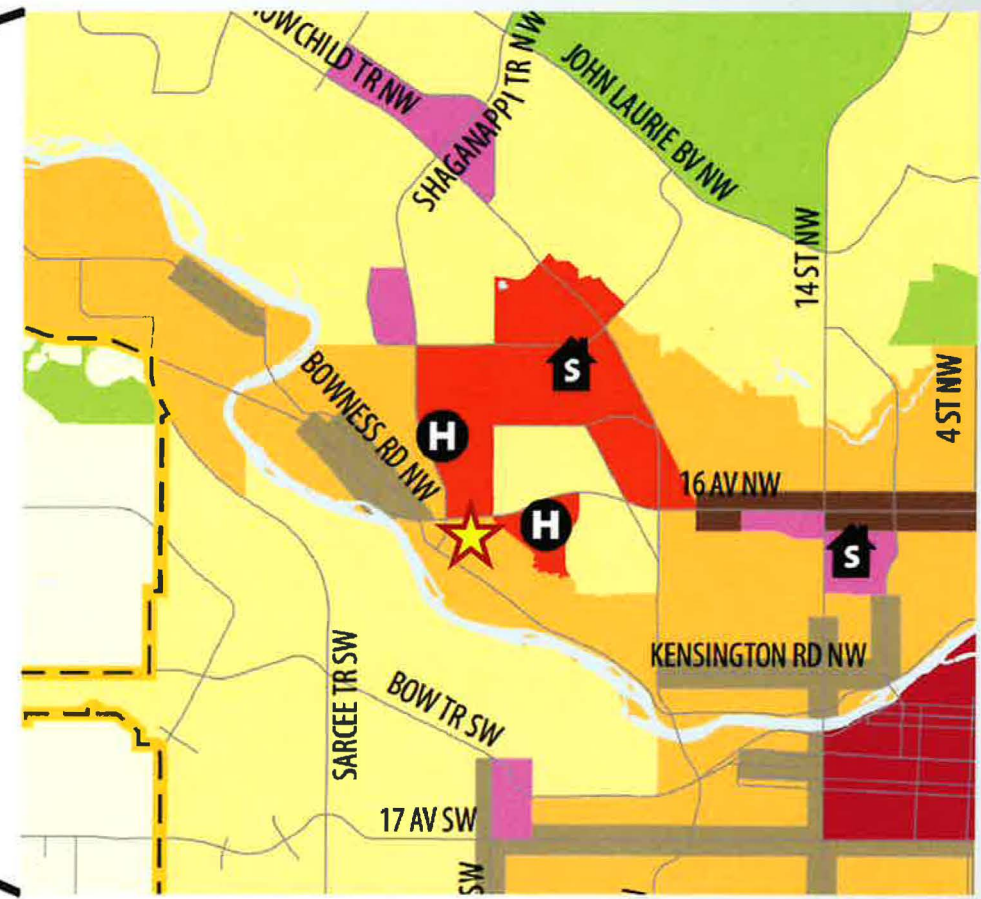
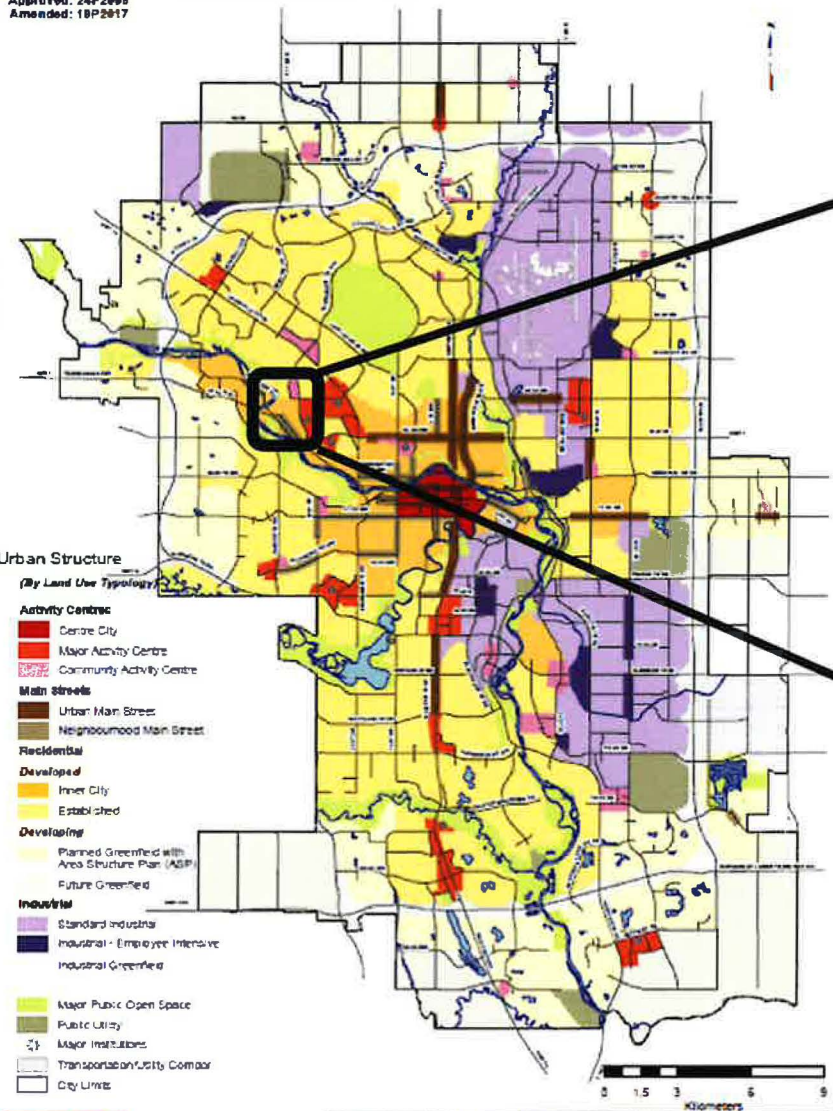








Approved: 24P2008
Amended: 19P2017



The map represents a conceptual and use structure and transportation network for the city as a whole. The representation is made based on a particular site use of City investment as represented on this map, will be made. This includes, but is not limited to, including environmental considerations, as well as the future financial capabilities of the City of Calgary must be considered before any and all use of City investment decisions are made.

1 Urban Structure

X:\367\proj\urban\maps\2017\geographic\map\form\form\urban_structure.mxd

South Shaganappi Communities

Area Plan

JULY 2011



calgary.ca/SSCAP | call 3-1-1

