

CITY OF CALGARY
RECEIVED
IN COUNCIL CHAMBER

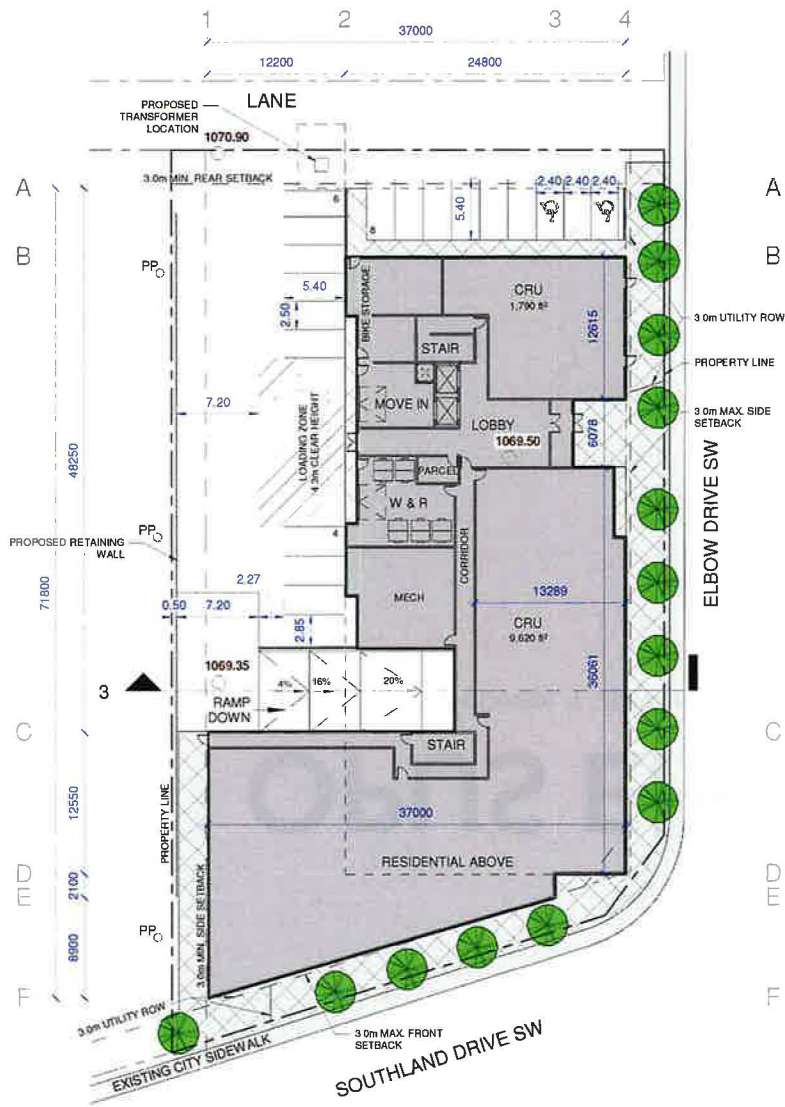
JUL 05 2022
ITEM: *8.1.3 CPC 2022-0498*
Distrib - Presentation
CITY CLERK'S DEPARTMENT

OPUS Elbow Drive Mixed Use

22-014 | Schematic Design | 2020 06 10

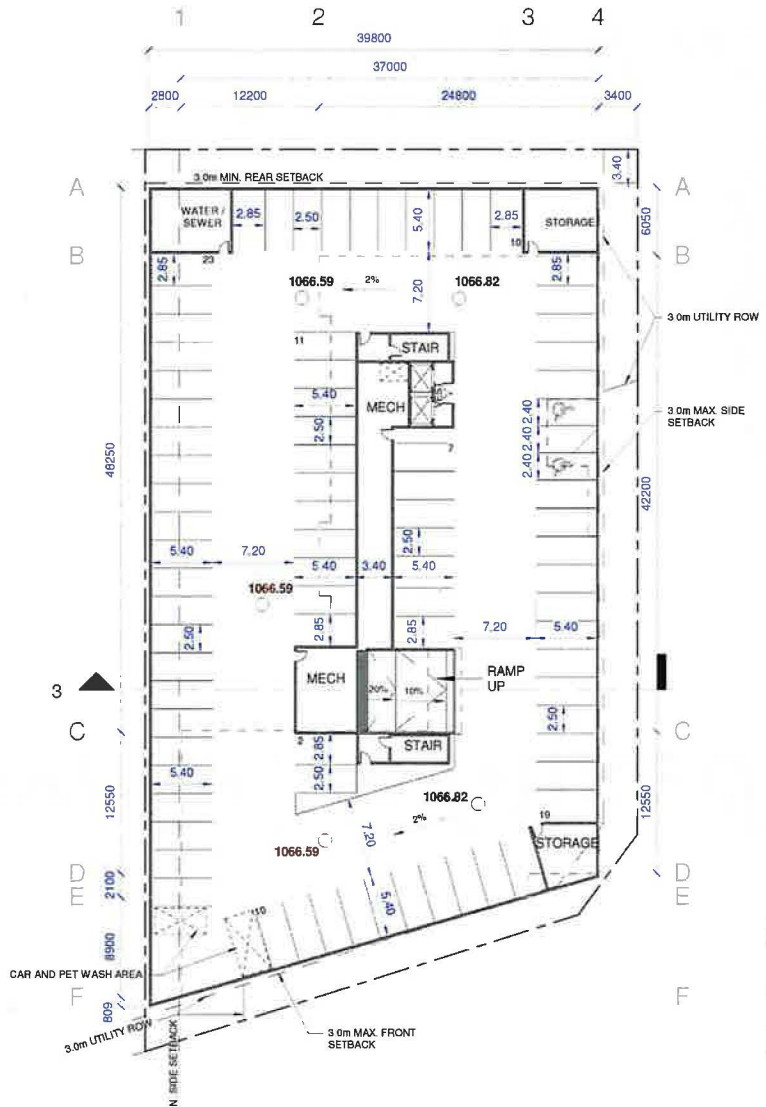


GRAVITY ARCHITECTURE



① Level 1
1 : 500

GFA = 18,660 ft²



② Parkade
1 : 500

PARKING STALL COUNT

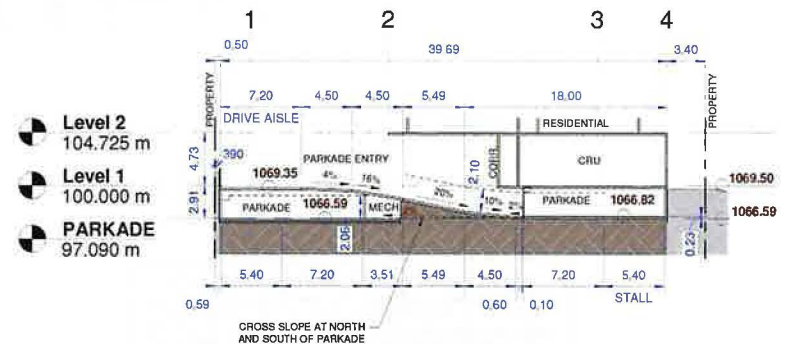
ABOVE GRADE	= 18
PARKADE	= 82
TOTAL	= 100

GROSS FLOOR AREA

MAIN	= 17,190 ft ²
FLOORS 2-6	= 68,800 ft ² (5 x 13,760 ft ²)
TOTAL	= 85,990 ft ²
SITE AREA	= 34,140 ft ²
F.A.R.	= 2.5

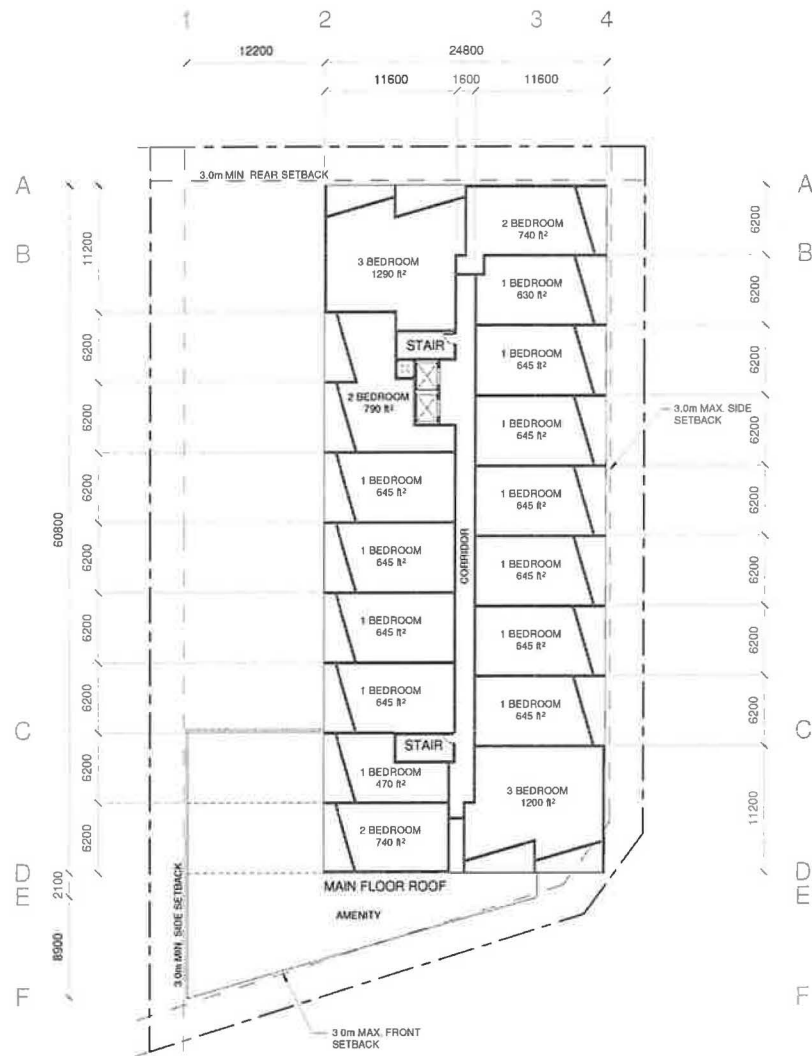
UNIT TYPE COUNT

TYPICAL FLOOR	
1 BEDROOM	= 12
2 BEDROOM	= 3
3 BEDROOM	= 2
TOTAL	= 17
GRAND TOTAL	= 85



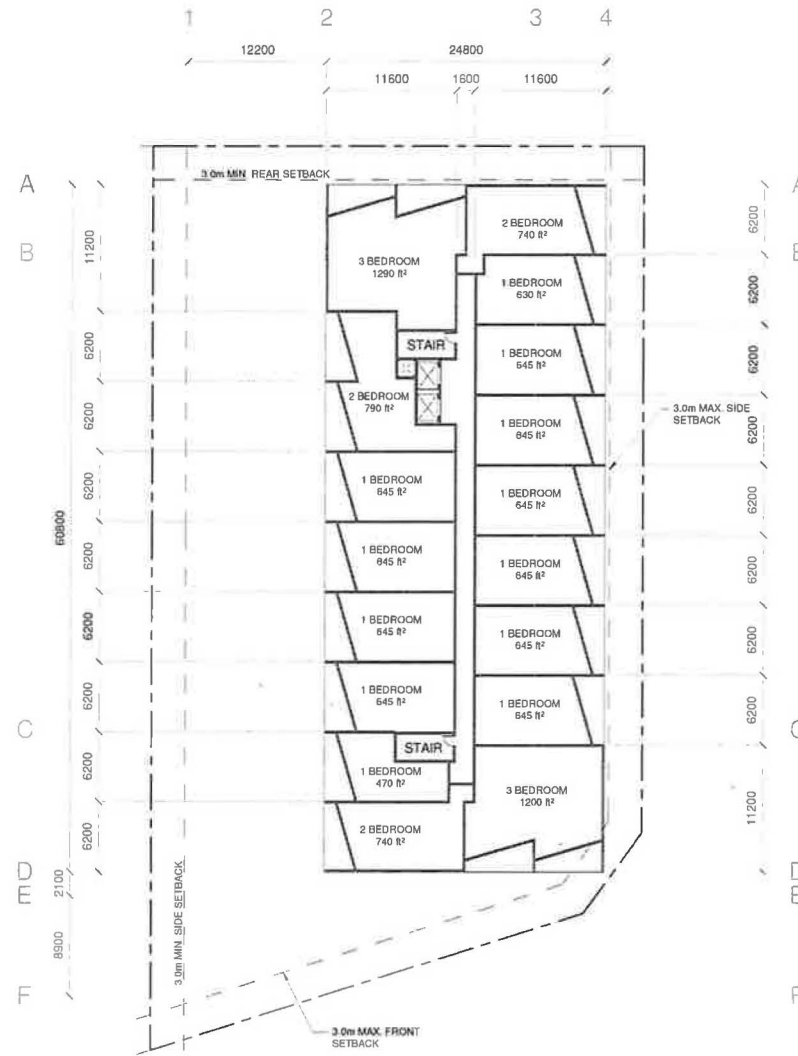
③ Schematic Ramp Section
1 : 500

Main Floor and Parkade



1 Level 2
1 : 500

GFA = 13,760 ft²



2 Levels 3 - 6
1 : 500

GFA = 13,760 ft²

GROSS FLOOR AREA

MAIN	= 17,190 ft ²
FLOORS 2-6	= 68,800 ft ² (5 x 13,760 ft ²)
TOTAL	= 85,990 ft ²

SITE AREA	= 34,140 ft ²
F.A.R.	= 2.5

UNIT TYPE COUNT

TYPICAL FLOOR	
1 BEDROOM	= 12
2 BEDROOM	= 3
3 BEDROOM	= 2
TOTAL	= 17

GRAND TOTAL = 85

Residential Floor Plans