

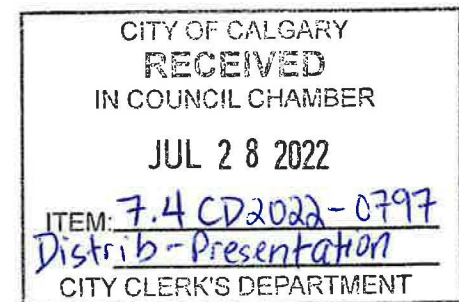
Calgary



# CD2022-0797 Mobility Trends in Calgary

COVID-19 Transportation System Monitoring

Presentation to the Community Development Committee – July 28, 2022

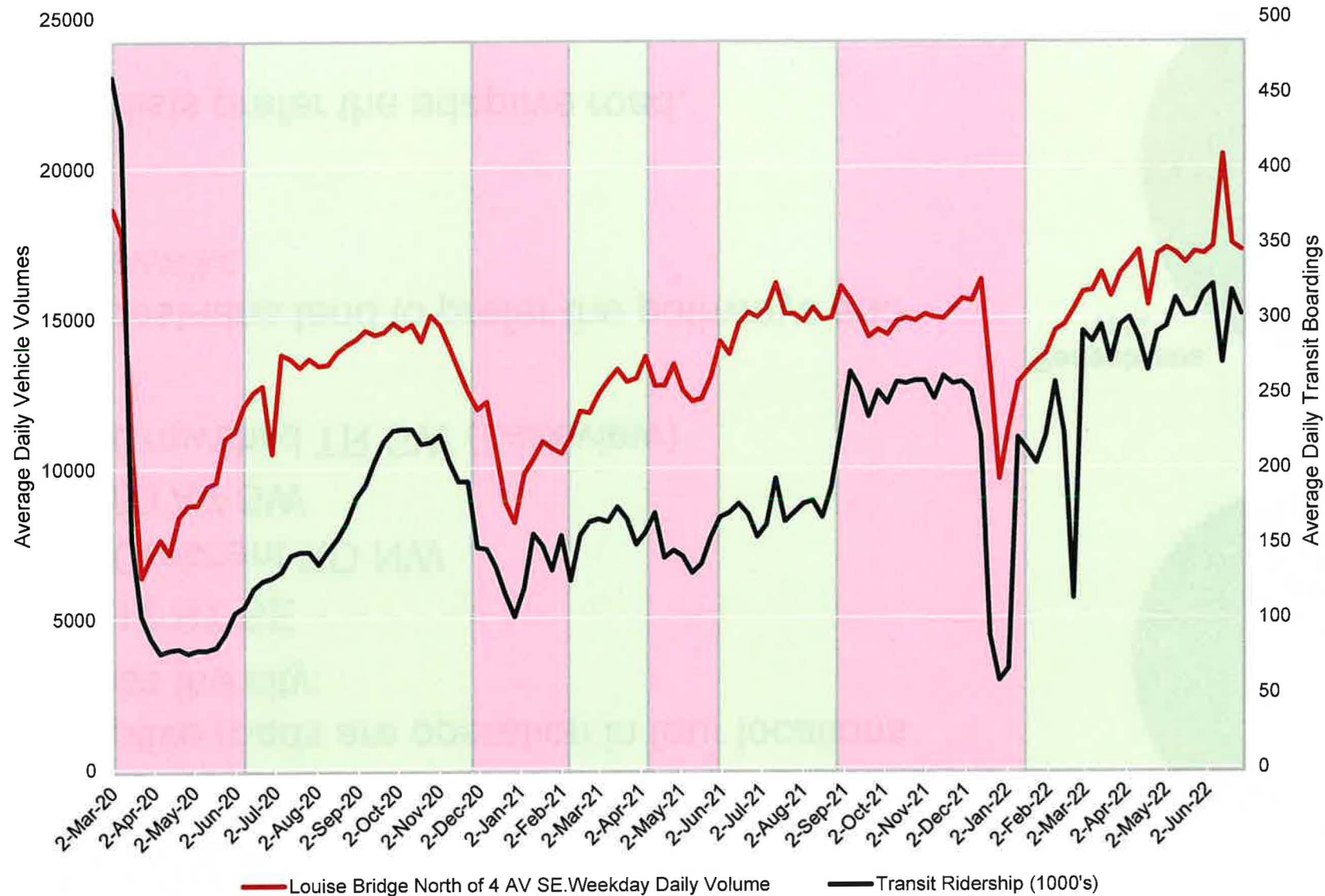




## Recommendation

Administration recommends that the SPC on Community Development recommend that Council receive this information for the Corporate Record.

# Travel volumes over the COVID Pandemic

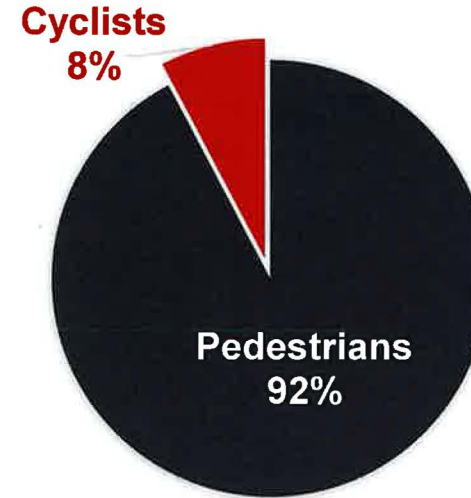


- Public health restrictions were eased in February 2022.
- Recovery of transit volumes in certain segments.
- Overall transit volumes are not recovering as quickly.

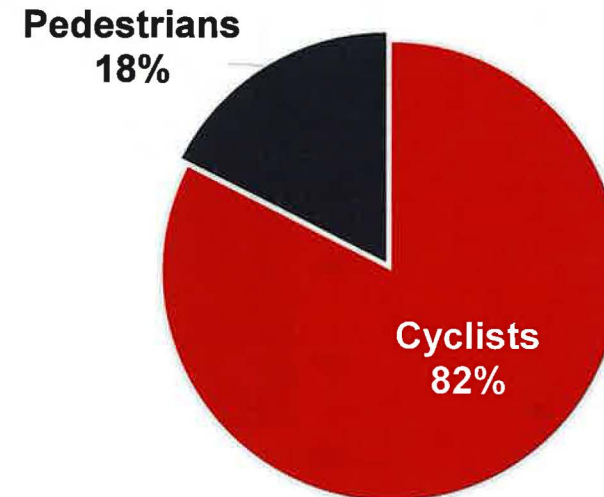


# Adaptive Roads

- Adaptive roads are operation in four locations across the city:
  - 12 ST SE
  - Crescent RD NW
  - 50 AV SW
  - Crowchild TR SW (Lakeview)
- Pedestrians tend to prefer the pathways and sidewalks
- Cyclists prefer the adaptive road.



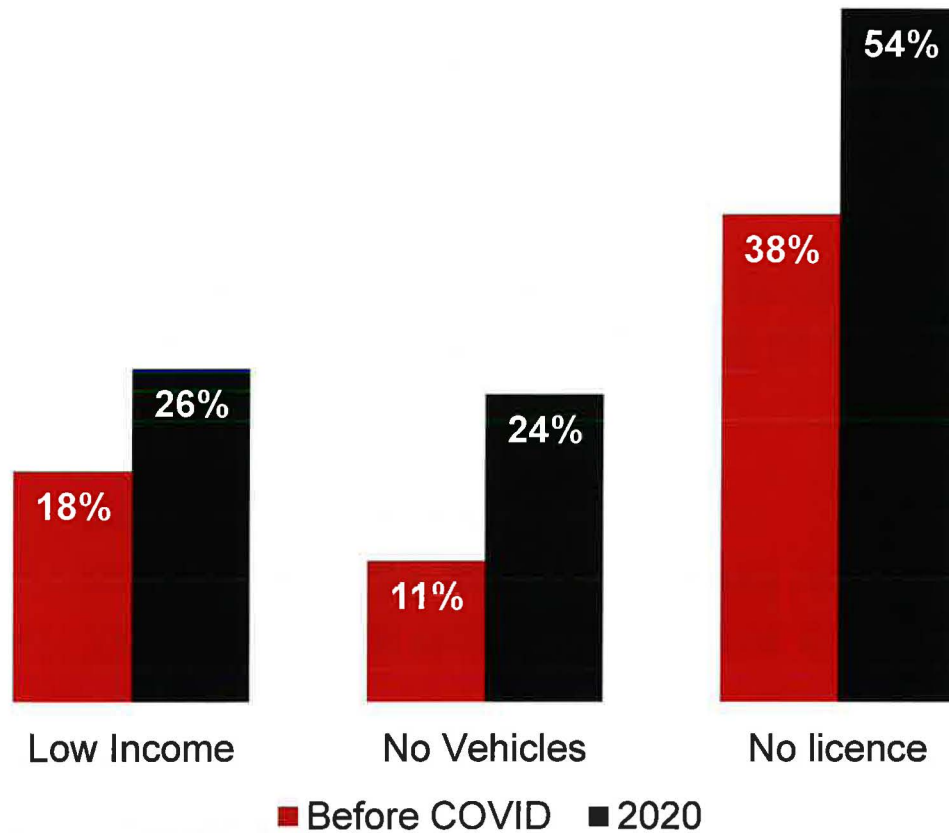
Pathway and sidewalk users



Adaptive road users



Percent of transit users who are transit dependent



## Transit Dependent Users

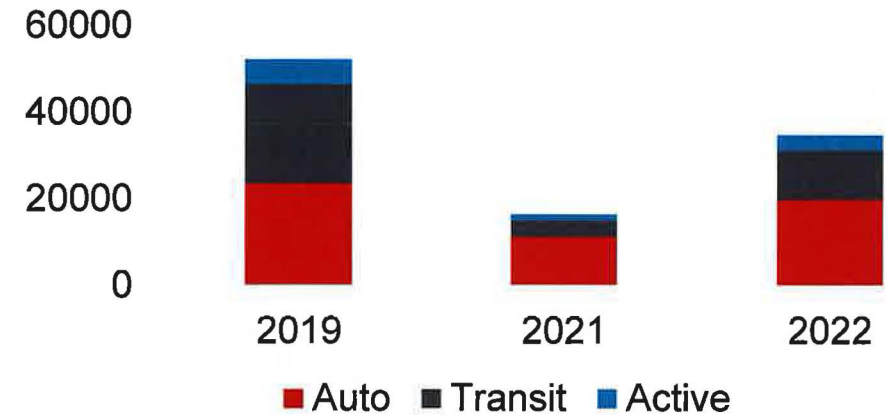
- Transit dependent users are passengers who do not have easy access to other modes of transportation.
- This includes
  - Low-income households
  - Households with no vehicles
  - People who do not have a driver's licence.
- These users continue to depend on transit, while others have shifted to other modes or stayed home.



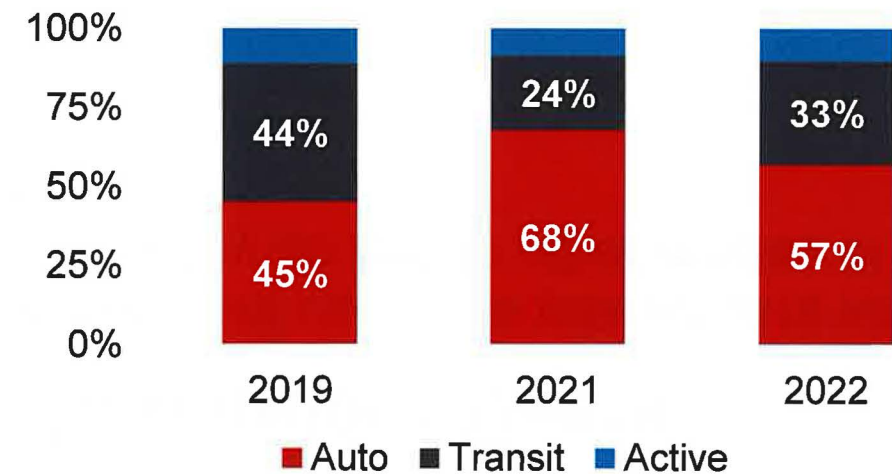
# Travel mode shift to the Downtown

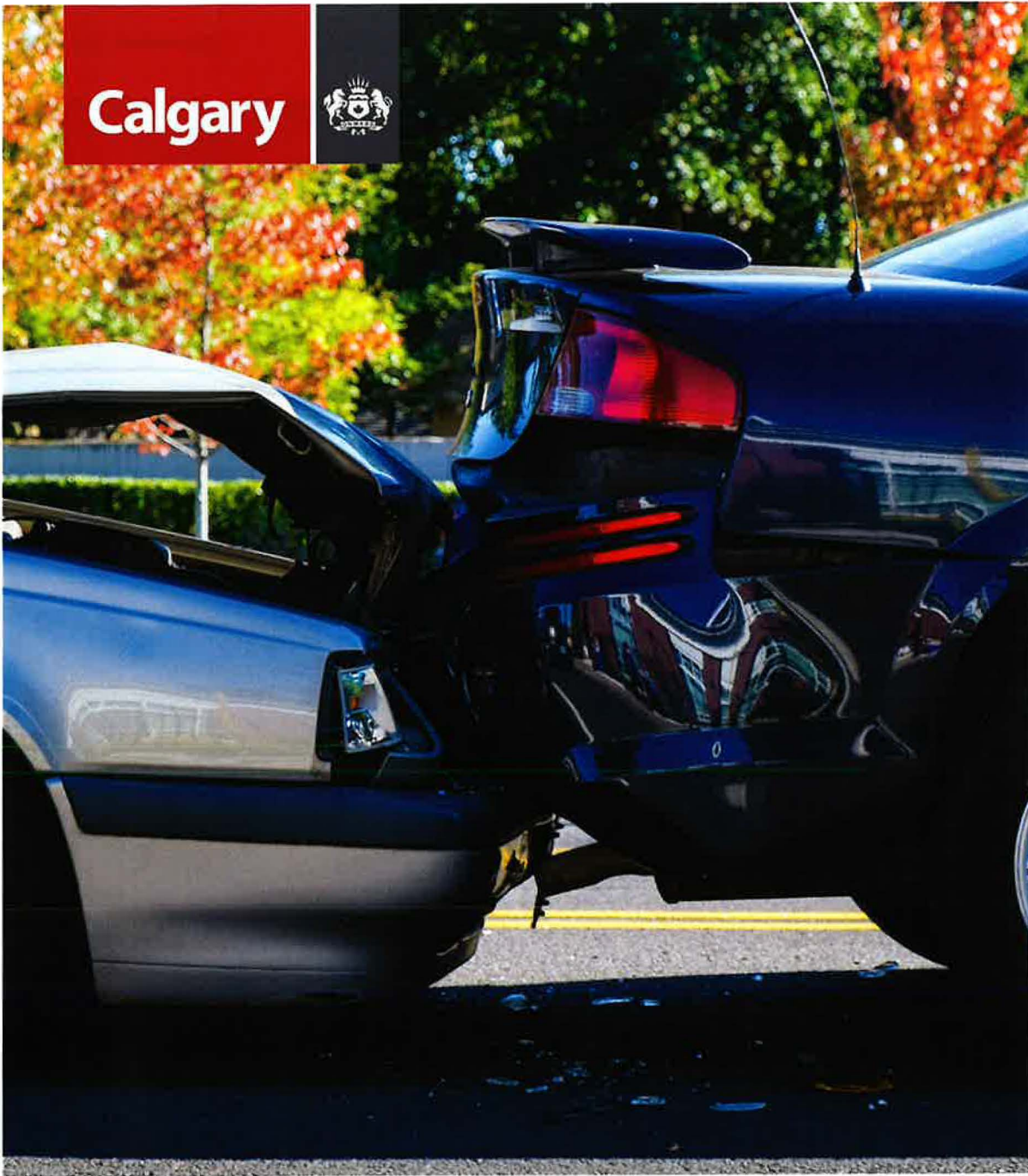
- Trips into the downtown core doubled between 2021 and 2022 and is two-thirds of pre-pandemic levels.
- Auto mode share increased in 2021 as people travelling to the downtown shifted modes.
- As workers return to the downtown, the transit mode share has improved.
- Mode share is also impacted by factors such as parking availability and cost, safety, and work schedules.

AM Inbound Trips



AM Inbound Mode Split

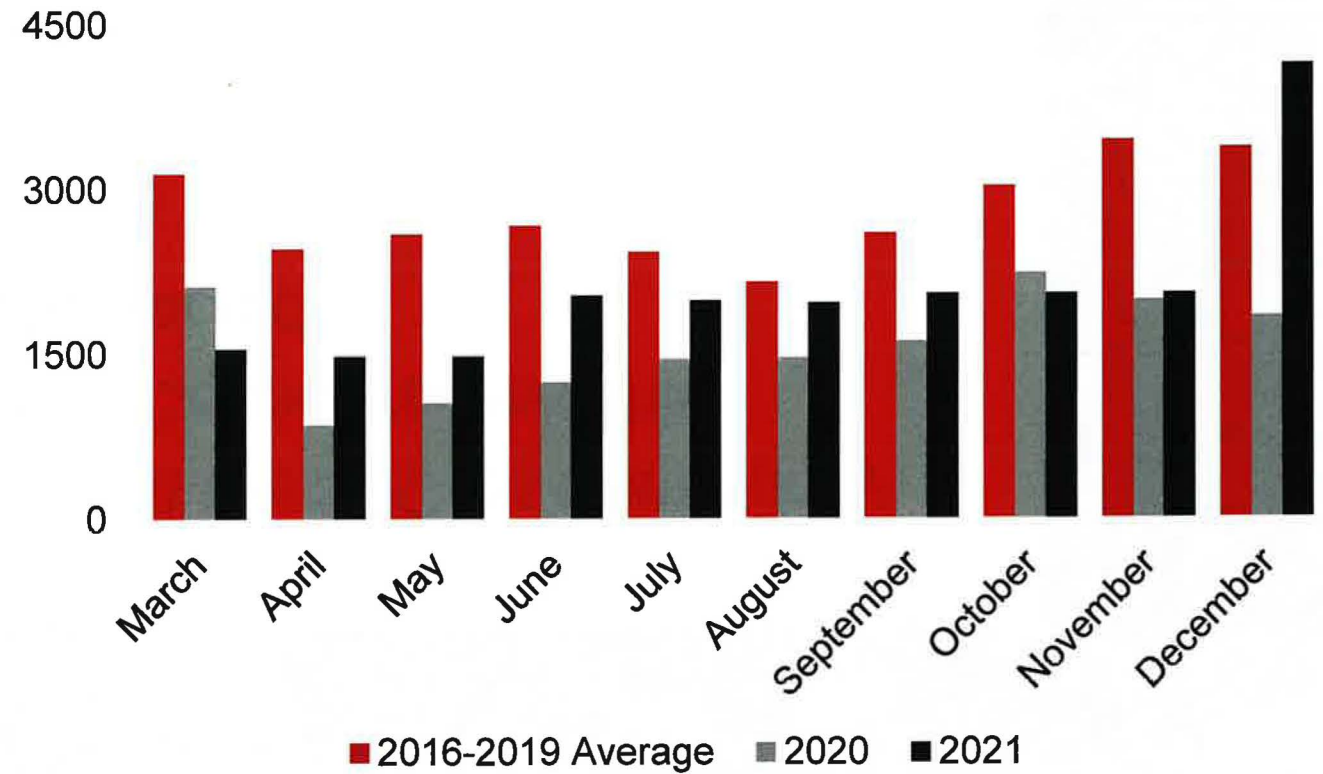


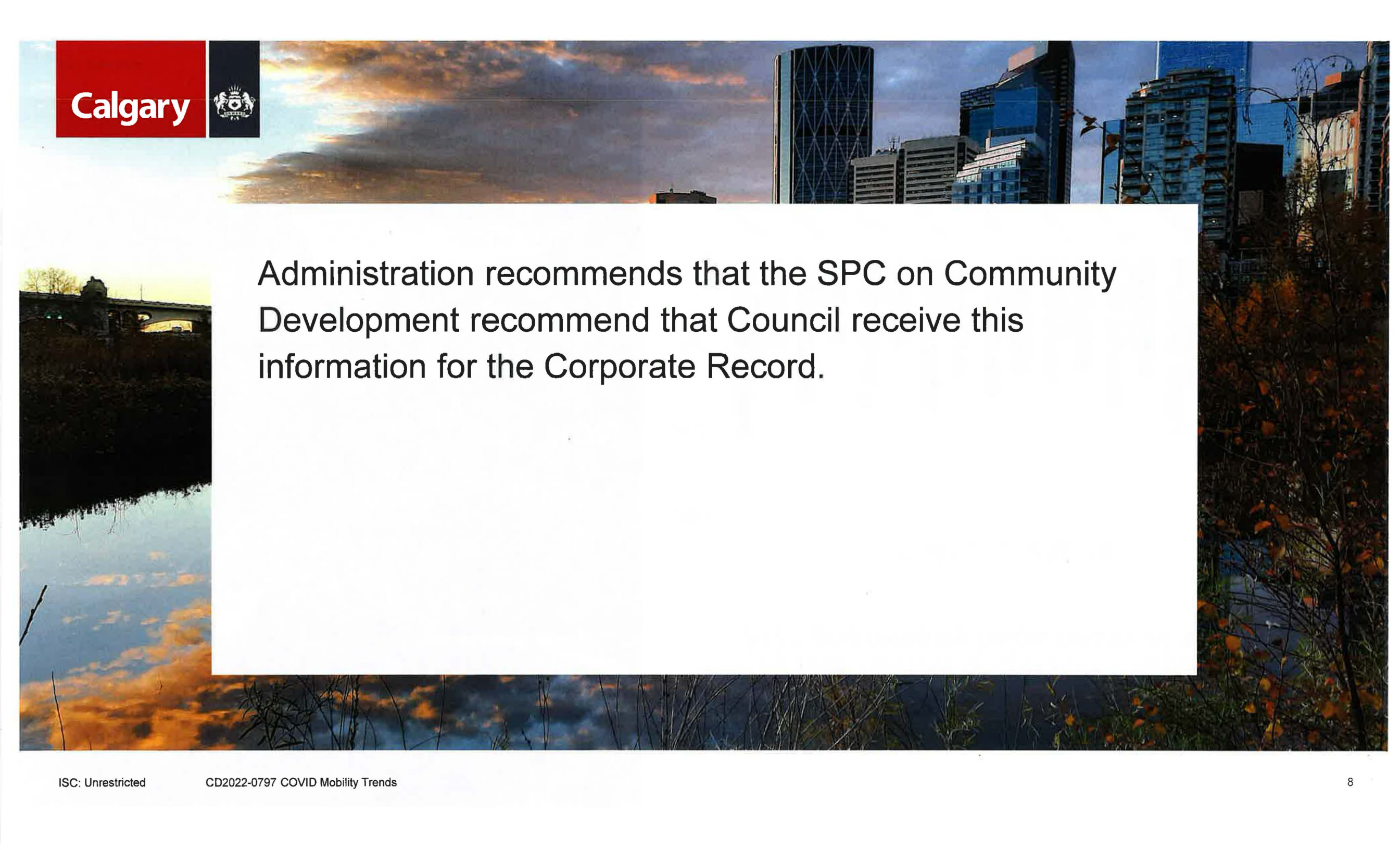


## Collisions & Safety

- The total number of collisions increased in 2021 and remains below historical averages.

Collisions by Month



The background of the slide is a composite image. The top half shows a city skyline at dusk or dawn, with the Calgary Tower and other skyscrapers visible against a cloudy sky. The bottom half shows a river with a bridge in the distance, and some trees with autumn foliage in the foreground.

Administration recommends that the SPC on Community Development recommend that Council receive this information for the Corporate Record.