

Development Permit (DP2022-02121) Summary

DP2022-02121 proposes a four-unit rowhouse and a two-unit semi-detached dwelling oriented around a central courtyard. The development permit also proposes a total of five secondary suites, with one secondary suite at grade in the semidetached building, and the other four below grade in the rowhouse. The secondary suites are proposed to be 45 square metres or less in size. Vehicle parking is to be provided through a parking pad that is accessed via the rear lane.

The following excerpts from the development permit submission provide an overview of the proposal and are included for information purposes only. The development permit plans are subject to change through the development review. Administration's review of the development permit will determine the ultimate building design and site layout details such as parking, landscaping, and site access will be determined through the Development Permit review.

Figure 1: Rendering (Southwest Elevation)



Figure 2: Site Plan

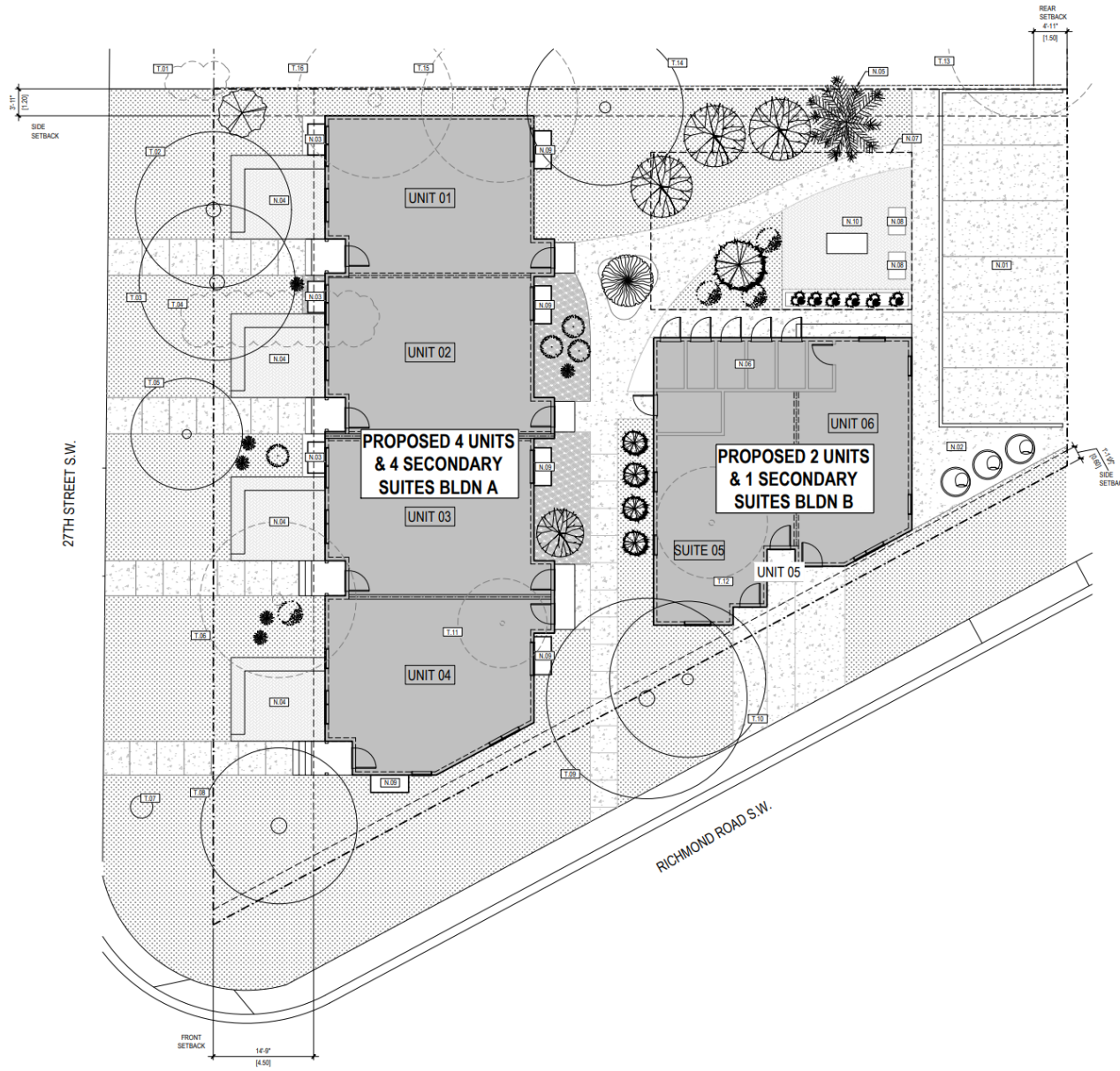
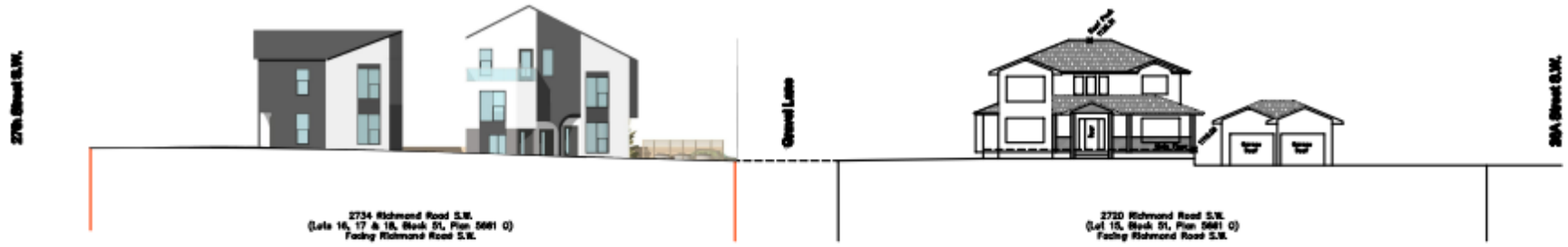


Figure 3: Streetscape



South-Side Streetage

