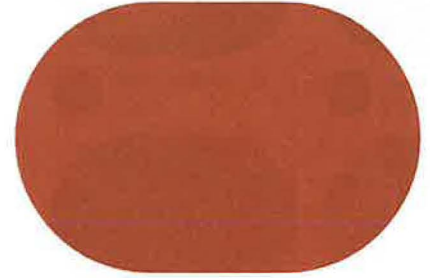
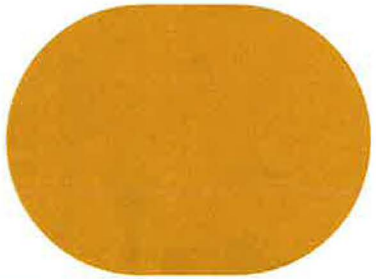
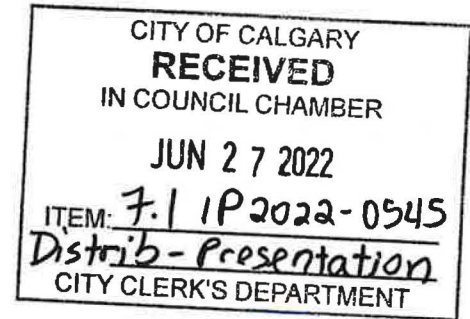




Nostalgia

\$74M
Off-site Levy
Contributions

\$9.9M
Annual Property
Tax Revenue



 \$0 capital cost requirement
 +\$1.5 billion in total project value

 Contiguous integration with natural areas
 Net-zero ready, the first of its kind

 Actively engaging with Indigenous communities
 Commitment to solar on ALL single-detached homes

 75% of home-building raw materials are locally sourced
 Geoexchange process proposed for all commercial and multi-residential buildings





JAYMAN + TELSEC

Nostalgia

A Sustainable Node for the Southeast...

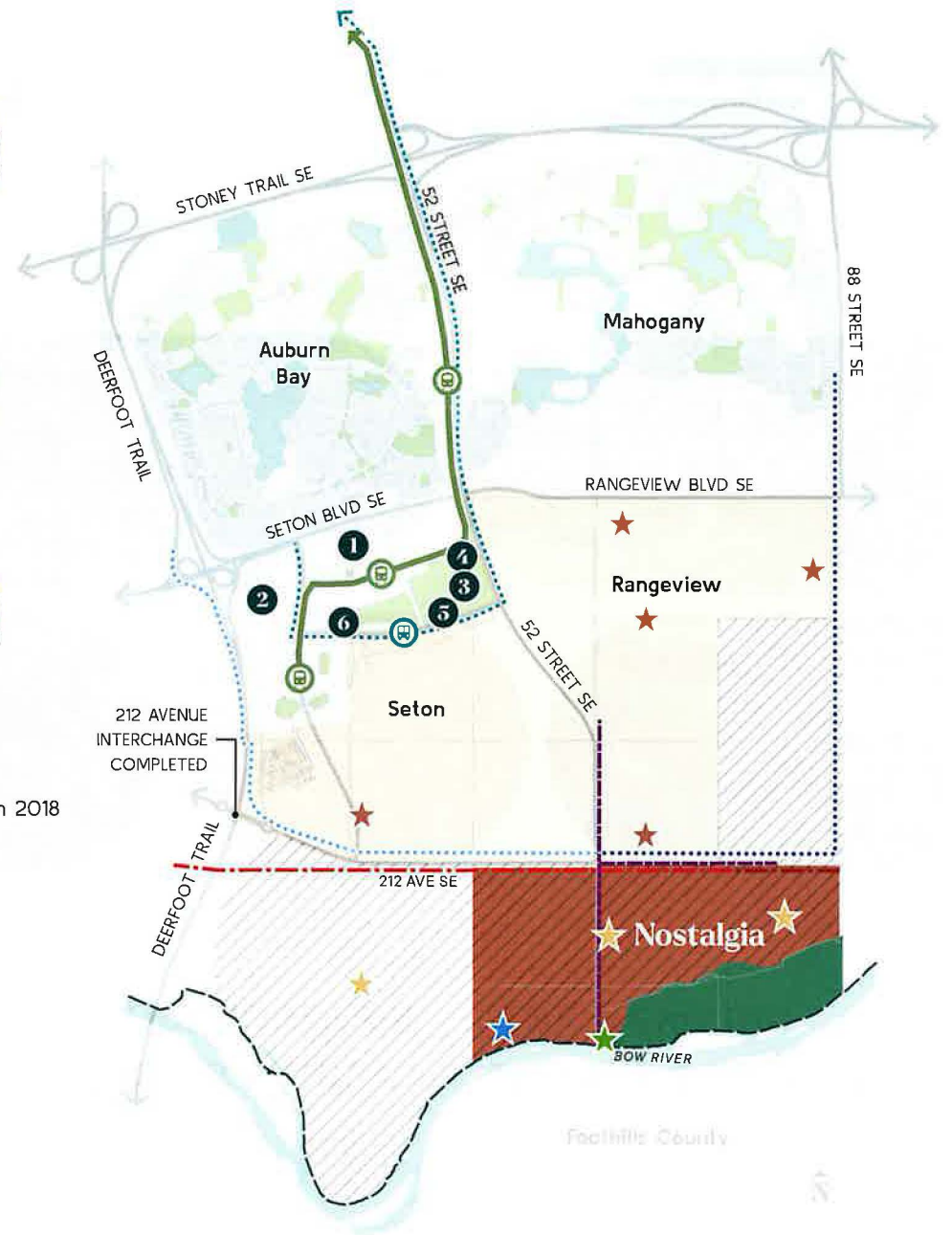
Jayman & Telsec will leverage the significant investments that have already been made, while offering a unique community that enhances the southeast.

NOSTALGIA

Nostalgia will inject the southeast with the population necessary to support diverse commercial, office and other non-residential uses in southeast Calgary.

- 1 South Health Campus
- 2 Seton Urban District
- 3 YMCA at Seton
- 4 Seton Public Library
- 5 J.C.S. High School
- 6 Seton Fire Station N°41

- Nostalgia Business Case Area
- Growth Management Overlay Removed in 2018
- Growth Management Overlay Existing
- Provincial Land
- Approved Neighbourhood Activity Centre
- Future Neighbourhood Activity Centre
- Tourism Node - Fishing Village
- Provincial Boat Launch
- LRT - Green Line
- BRT MAX - Teal Route
- Ogden Water Feedermain (Stage 1)
- Ogden Water Feedermain (Stage 2)
- Rangeview Sanitary Trunk (Stage 1)
- Rangeview Sanitary Trunk (Stage 2)
- Seton Storm Trunk





NOSTALGIA

This concept plan articulates the key neighbourhood design elements and will be refined through the development process.

- A** Mixed-use main street and network of walkable streets
- B** Interconnected Canal System with intimate public spaces
- C** Mixed-use fishing village, hotel and network of riverfront pedestrian streets, including retention of original homestead.

- D** Slope-adaptive Multi-residential
- E** Signature Town-centre residents building
- F** Feature Chapel, innovative housing courts and escarpment water features

- G** Nautilus pond and stormwater kidney
- H** Publicly accessible Escarpment Green Corridor.
- I** Escarpment edge community association building

- J** Lifestyle neighbourhood park and playground
- K** Nostalgia gateway entry feature and public art
- L** Mixed-use neighbourhood activity centre on escarpment

