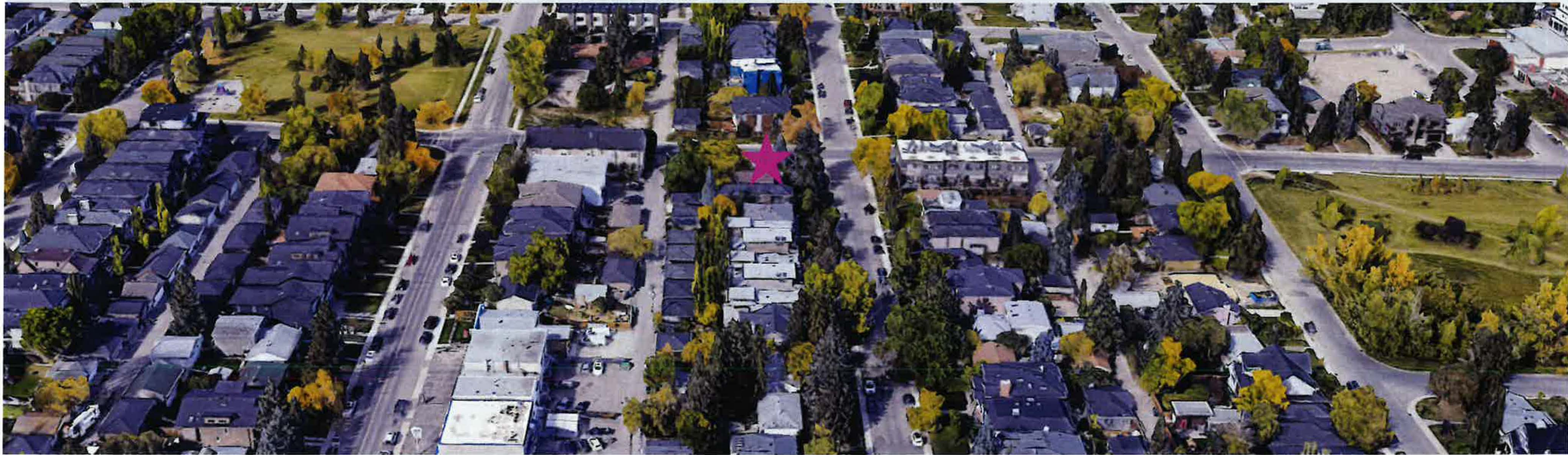




Public Hearing of Council

Agenda Item: 8.1.5

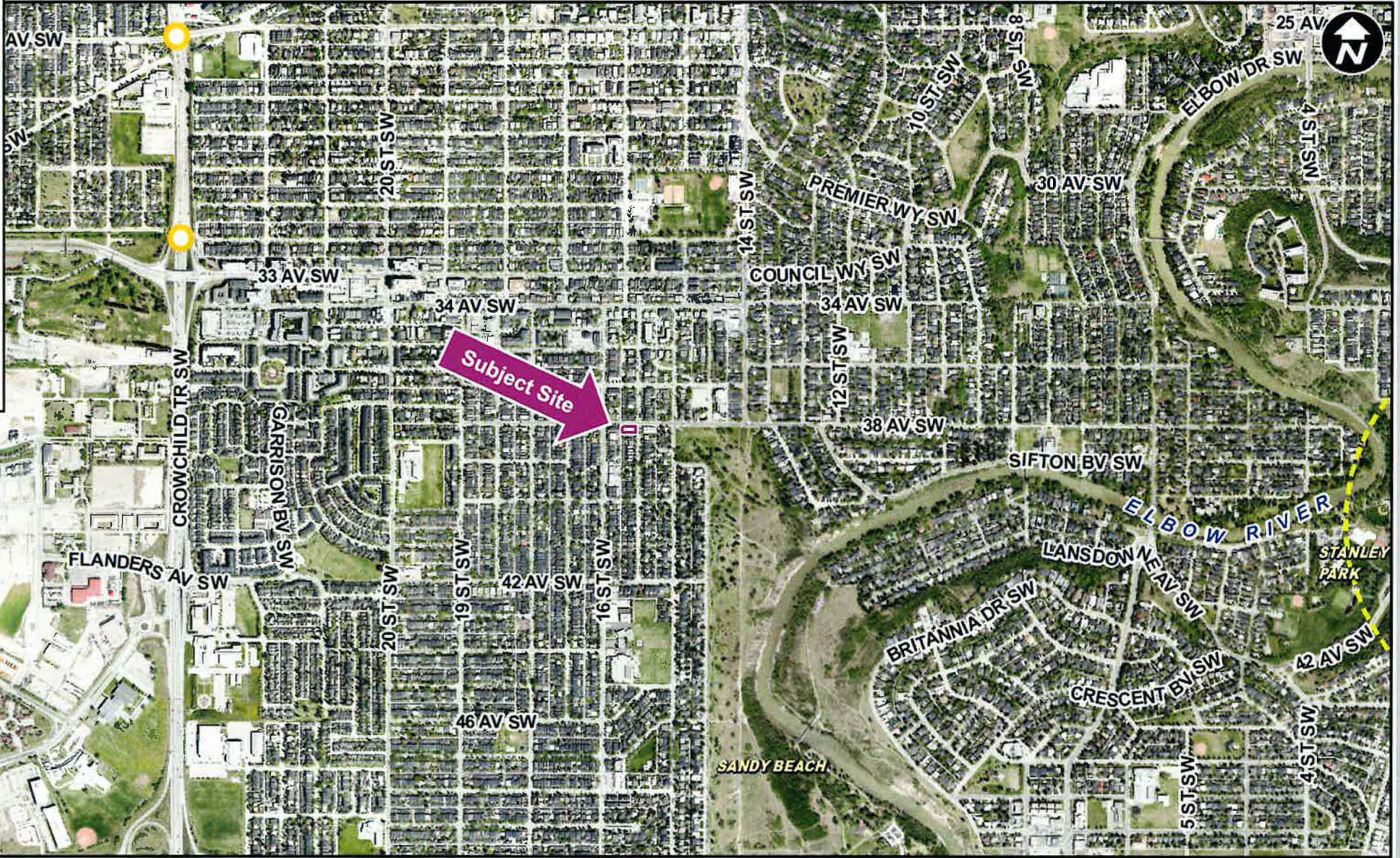
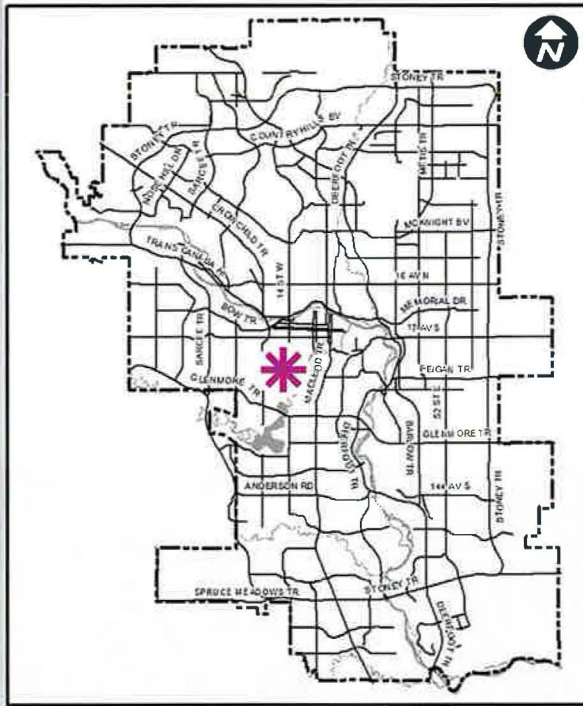


LOC2021-0163 / CPC2022-0532

Policy and Land Use Amendment

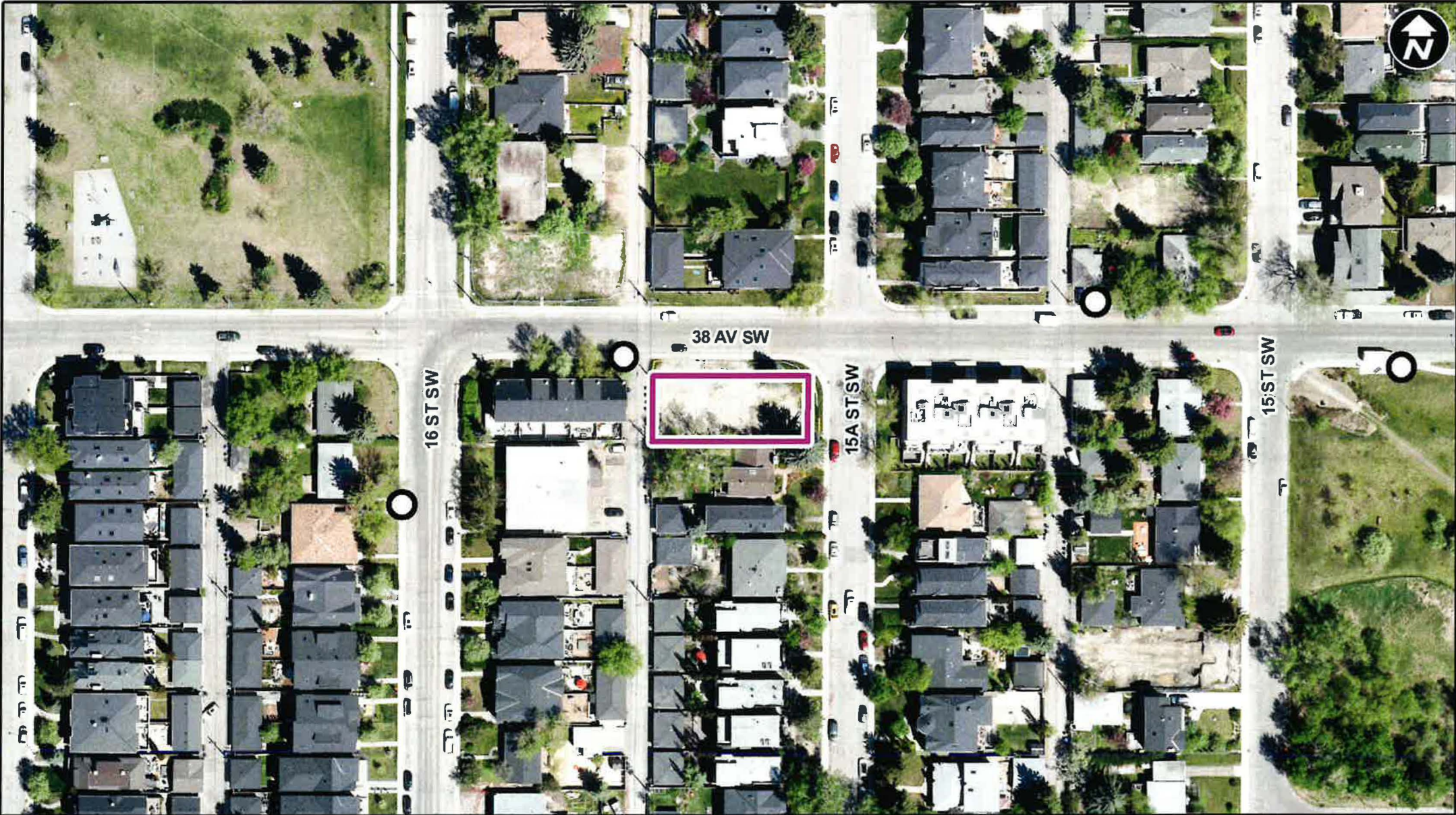
July 26, 2022

CITY OF CALGARY
RECEIVED
IN COUNCIL CHAMBER
JUL 26 2022
ITEM: # 8.1.5 CPC2022-0532
Distribution
CITY CLERK'S DEPARTMENT



LEGEND

- 600m buffer from LRT station
- LRT Stations**
- Blue
- Downtown
- Red
- Green (Future)
- LRT Line**
- Blue
- Blue/Red
- Red
- Max BRT Stops**
- Orange
- Purple
- Teal
- Yellow



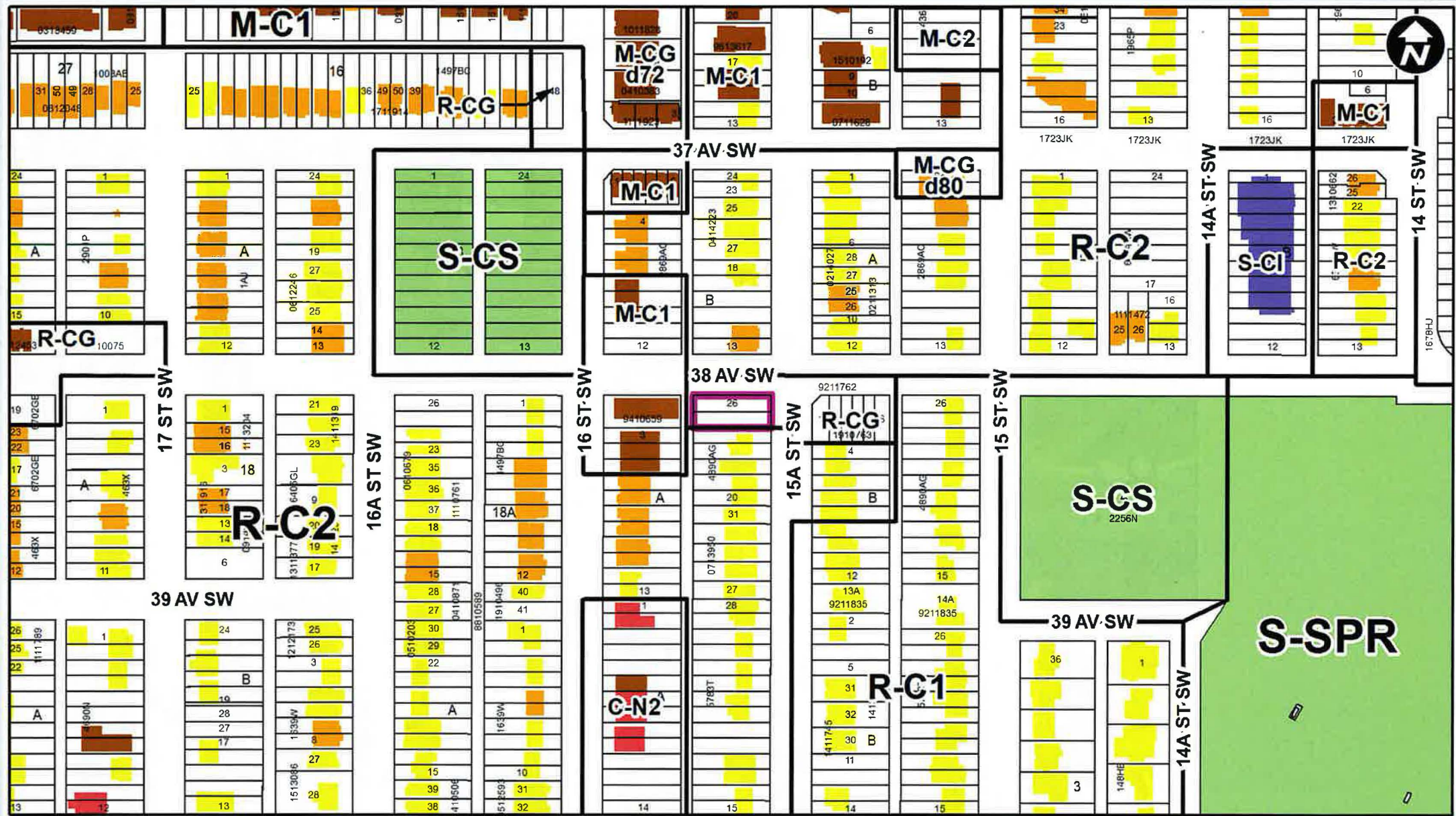
○ Bus Stop

Parcel Size:

0.06 ha
15m x 38m

LEGEND






- Single detached dwelling
- Semi-detached / duplex detached dwelling
- Rowhouse / multi-residential
- Commercial
- Heavy Industrial
- Light Industrial
- Parks and Openspace
- Public Service
- Service Station
- Vacant
- Transportation, Communication, and Utility
- Rivers, Lakes
- Land Use Site Boundary

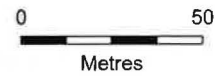




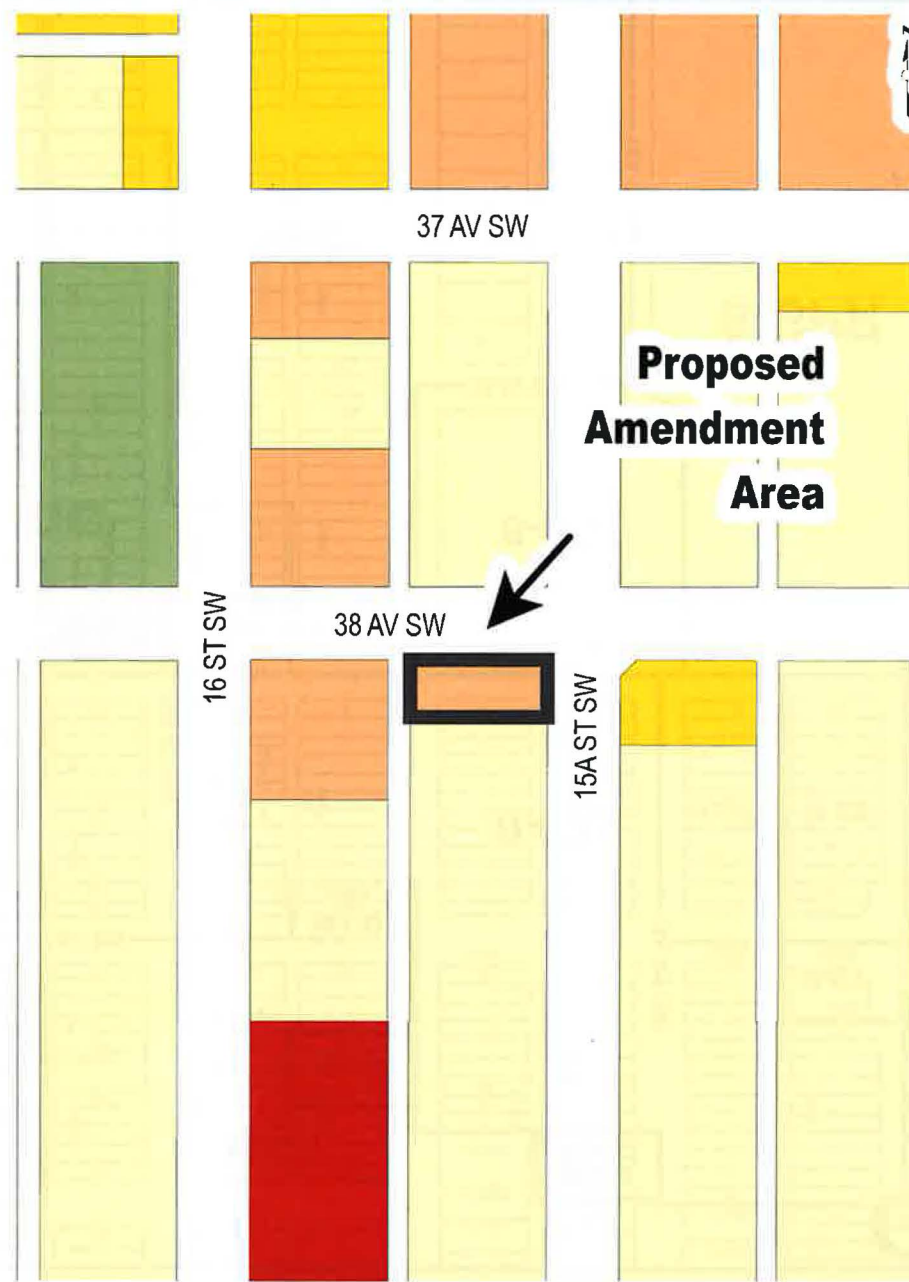
Map 2
Land Use Policy

Legend

-  Residential Conservation
-  Residential Low Density
-  Residential Medium Density
-  Local Commercial
-  Open Space



This map is conceptual only. No measurements of distances or areas should be taken from this map.



Calgary Planning Commission's Recommendation:

That Council:

1. Give three readings to **Proposed Bylaw 42P2022** for the amendments to the South Calgary/Altadore Area Redevelopment Plan (Attachment 2); and
2. Give three readings to **Proposed Bylaw 115D2022** for the redesignation of 0.06 hectares \pm (0.15 acres \pm) located at 1603 – 38 Avenue SW (Plan 4890AG, Block A, Lots 25 and 26) from Residential - Grade-Oriented Infill (R-CG) District to Direct Control (DC) District.

Supplementary Slides



View from northeast corner at the intersection of 38 Avenue SE & 15A Street SE



View of site looking WEST on 15A Street SW



View of site looking SOUTH on 38 Avenue SW

