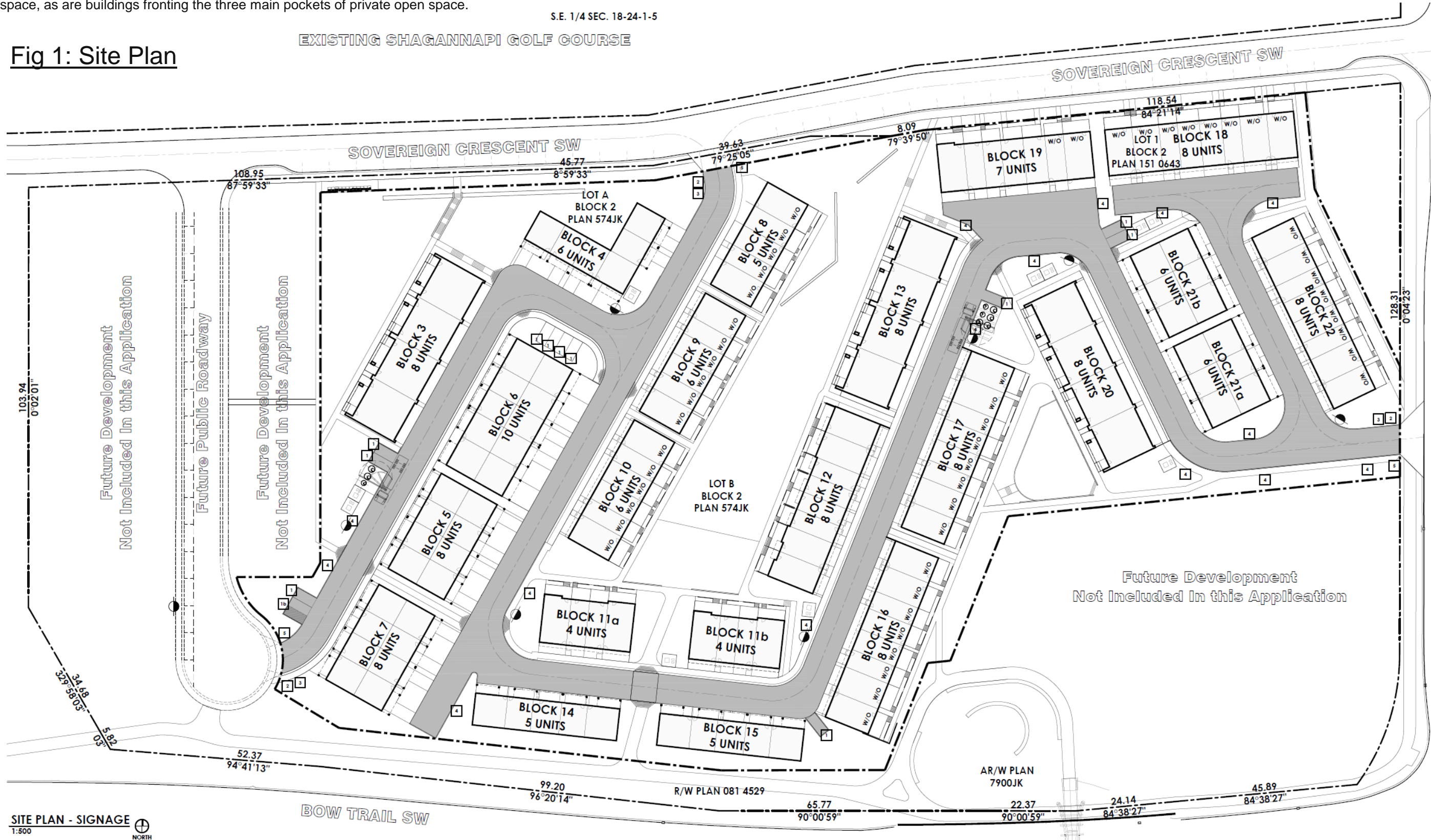


# Development Permit (DP2021-0337) Summary

This development permit proposes 150 attached residential units in 22 buildings. On a 3.28-hectare site, the development achieves a unit density of 46 units per hectare. Buildings adjacent to Municipal Reserve are oriented toward the park space, as are buildings fronting the three main pockets of private open space.

S.E. 1/4 SEC. 18-24-1-5

Fig 1: Site Plan



SITE PLAN - SIGNAGE  
1:500

Fig 2: Townhouse



**Fig 3: Back-to-back  
Townhouse**



Fig 4: Rowhouse

