

**MISCELLANEOUS
CITY-WIDE
MUNICIPAL DEVELOPMENT PLAN MAP AND TEXTUAL
AMENDMENTS
BYLAW 18P2015**

EXECUTIVE SUMMARY

This report proposes to remove Map 2 Growth and Change from Calgary's Municipal Development Plan (MDP, 24P2009) including deletion of all references to Map 2, within the text of the MDP. This recommendation is being proposed as a result of a review of the role of Map 2 previously directed by Council.

The adoption of the Growth Management Framework in 2013 introduced a comprehensive assessment tool that has served to replace the intended role of Map 2 in the MDP. As a result the gatekeeping role has moved from Map 2 of the MDP to the sequencing of developments under the Growth Management Framework. In order to remove duplication and to streamline processes this report proposes the removal of Map 2 from the MDP.

PREVIOUS COUNCIL DIRECTION

On 2014 December 08 Council gave three readings to Bylaw 36P2014 and adopted Map 2 Growth and Change from the Municipal Development Plan (MDP) to add the Haskayne ASP, the Nose Creek ASP, the North Regional Context Study Cell D, west half of Cell C ASP and the Providence ASP areas to the map and remove the Cornerstone ASP, the Rangeview ASP, the West Macleod ASP, and the Marda Loop ASP areas from the map. Council also directed Administration to review the role of Map 2 of the MDP.

ADMINISTRATION RECOMMENDATION(S)

2015 April 23

That Calgary Planning Commission recommends **APPROVAL** of the proposed amendment to the Municipal Development Plan.

RECOMMENDATION(S) OF THE CALGARY PLANNING COMMISSION

That Council hold a Public Hearing on Bylaw 18P2015; and

1. **ADOPT** the proposed amendments to the Municipal Development Plan, in accordance with Administration's recommendation; and
2. Give three readings to the proposed Bylaw 18P2015.

**MISCELLANEOUS
CITY-WIDE
MUNICIPAL DEVELOPMENT PLAN MAP AND TEXTUAL
AMENDMENTS
BYLAW 18P2015**

REASON(S) FOR RECOMMENDATION:

When the MDP was adopted in 2009, the intent of Map 2 was to:

- Describe the areas where growth and development are being planned through LAPs;
- Support the coordination between Council and PDA to align directions and work programs to achieve MDP objectives;
- Ensure a process by which the public can provide input on proposed work at a public hearing;
- Facilitate consistency and predictability of Planning and growth management outcomes.

ATTACHMENT

1. Proposed Bylaw 18P2015

**MISCELLANEOUS
CITY-WIDE
MUNICIPAL DEVELOPMENT PLAN MAP AND TEXTUAL
AMENDMENTS
BYLAW 18P2015**

Previous Amendments

Since the adoption of the MDP in 2009 Map 2 has been amended four times in response to Council Direction to add policy work:

1. On 2014 December 08 Council gave three readings to Bylaw 36P2014 and adopted Map 2 to add the Haskayne ASP, the Nose Creek ASP, the North Regional Context Study Cell D, west half of Cell C ASP and the Providence ASP areas to the map.
2. On 2013 March 18 Council adopted Bylaw 8P2013 amending Map 2 to add Northeast Regional Plan Cell "A" ASP (Cornerstone); Stadium ARP; Downtown West ARP; and Cells C & D of the Southeast Planning Area Regional Policy Plan (Rangeview).
3. On 2012 June 11 Council adopted Bylaw 16P2012 to update Map 2 Growth and Change of the MDP to add Local Area Plans (Banff Trail ARP, Marda Loop ARP, 50th AV LAP, and Parkdale).
4. On 2012 January 10 Council adopted Bylaw 5P2012 amending Map 2 to reflect the revised city boundaries.

Each of these amendments occurred subsequent to an approval to initiate policy therefore the intended role of Map 2 as gatekeeper for policy work did not occur in practice.

Public Accountability

Map 2 was created as a tool to provide a public accountability structure for making growth and change decisions. Since an amendment to the Map constitutes an amendment to the MDP a public hearing is required. This provides members of the public an opportunity to speak on growth and change decisions. In practice however, Council gave direction to commence local area plans using other mechanisms, and the amendment to Map 2 became a formality.

The addition of policy work often occurred through the departmental work program or Council direction which would have been a more optimal time for the public to provide input to the City's planned work.

The Growth Management Framework:

In 2013 Council approved the Corporate Framework for Growth and Change. The Framework was developed in consultation with stakeholder groups and the general public to formulate a process that assists The City in making decisions on growth and development. As a result of this project criteria for growth management are in place and LAPs became only one factor in managing the future growth of the city.

Conclusion

**MISCELLANEOUS
CITY-WIDE
MUNICIPAL DEVELOPMENT PLAN MAP AND TEXTUAL
AMENDMENTS
BYLAW 18P2015**

The Growth Management Framework and Action Plan are more effective and detailed processes of prioritising and sequencing planning work that aligns growth with budgetary capacity. This process encompasses the intended functions of Map 2 as a means for informing the public and laying out the groundwork for policy; thereby replacing the intended gatekeeper role of Map 2. The removal of Map 2 will also serve to cut red tape and stream line the planning process.

ADMINISTRATION RECOMMENDATION TO CALGARY PLANNING COMMISSION

Recommend that Council **ADOPT**, by bylaw, the proposed amendments to the Municipal Development Plan (APPENDIX I).

Moved by: M. Wade

Carried: 7 – 0

Absent: Mr. Honsberger left the room due to a pecuniary conflict of interest and did not take part in the discussion or voting and G.-C. Carra

MISCELLANEOUS
CITY-WIDE
MUNICIPAL DEVELOPMENT PLAN MAP AND TEXTUAL
AMENDMENTS
BYLAW 18P2015

APPENDIX I

PROPOSED AMENDMENTS TO THE MUNICIPAL DEVELOPMENT PLAN

- (a) In Table of Contents, Part 7 – Maps, delete the following:

“1	Urban Structure
2	Growth and Change
3	Primary Transit Network
4	Road and Street Network
5	Natural Areas and Open Spaces
6	Jurisdictional and Major Development Influences”

And replace with the following:

“1	Urban Structure
2	Primary Transit Network
3	Road and Street Network
4	Natural Areas and Open Spaces
5	Jurisdictional Areas
6	Major Development Influences”

- (b) In Section 1.3.2, Alignment in the Calgary Region, fifth paragraph, delete reference to “Map 6” and replace with “Map 5.”
- (c) In Section 1.4.9, On-going MDP sustainment, second paragraph, delete the following sentence:
- “Map 1 (Urban Structure) and Map 2 (Growth and Change) will be updated in conjunction with corporate decisions to direct growth and public investment, as defined in Part 5.”
- (d) In Section 2.5.2 Transit, Primary Transit Network policy, delete reference to “Map 3” and replace with “Map 2.”
- (e) In Section 2.5.3, Complete Streets, The Road and Street Palette, second paragraph delete reference to “Map 4” and replace with “Map 3”
- (f) In Section 2.6.4, Ecological networks, third paragraph, delete reference to “Map 5” and replace with “Map 4.”
- (g) In Section 2.6.4, Urban forestry, policy “v.” delete reference to “Map 5” and replace with “Map 4.”

**MISCELLANEOUS
CITY-WIDE
MUNICIPAL DEVELOPMENT PLAN MAP AND TEXTUAL
AMENDMENTS
BYLAW 18P2015**

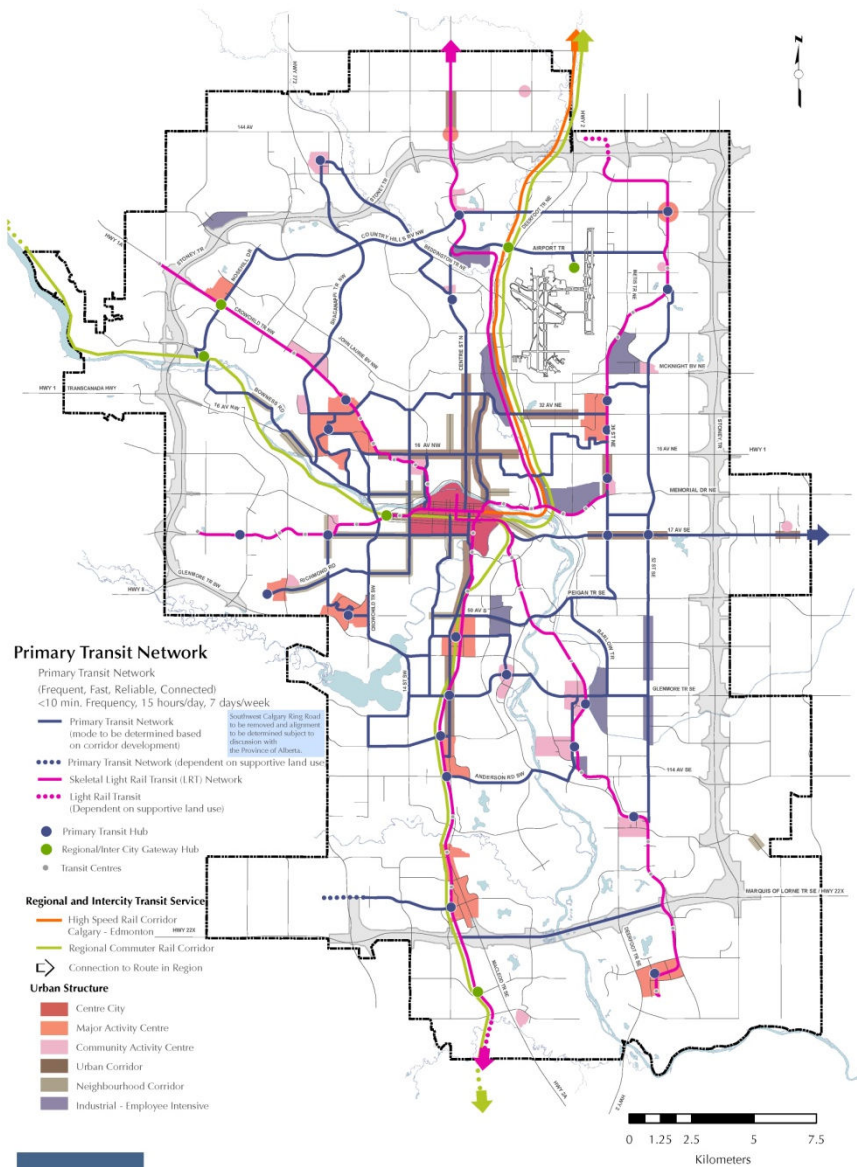
- (h) In Section 4.3, MGA-mandated policies, second paragraph, delete reference to “Map 6” and replace with “Map 5.”
- (i) In Section 5.2.7, Public accountability, delete the first paragraph in its entirety and replace with the following:

“City Council is accountable for growth and change decision making. In order to enhance that accountability, Objective 5.2.7 is achieved through the implementation of a range of policies that ensure that growth decisions are based on thorough assessment of the environmental, economic and social factors of any proposal. The public are given opportunities to be involved in and shape the future growth of Calgary through engagement and public hearings of Council. Communication with the public regarding progress towards the direction of the MDP and CTP will also be achieved by monitoring the Core indicators (Figure 5-2) and reporting to Calgarians”.
- (j) Delete the existing Part Seven, Map 2 entitled “Growth and Change.”
- (k) Delete the existing Part Seven, Map 3 entitled “Primary Transit Network” and replace with the revised Map 2 entitled “Primary Transit Network” (APPENDIX II).
- (l) Delete the existing Part Seven, Map 4 entitled “Road and Street Network” and replace with the revised Map 3 entitled “Road and Street Network” (APPENDIX III).
- (m) Delete the existing Part Seven, Map 5 entitled “Natural Areas and Open Spaces” and replace with the revised Map 4 entitled “Natural Areas and Open Spaces” (APPENDIX IV).
- (n) Delete the existing Part Seven, Map 6 entitled “Jurisdictional Areas” and replace with the revised Map 5 entitled “Jurisdictional Areas” (APPENDIX V).
- (o) Delete the existing Part Seven, Map 7 entitled “Major Development Influences” and replace with the revised Map 6 entitled “Major Development Influences” (APPENDIX VI).

MISCELLANEOUS
 CITY-WIDE
 MUNICIPAL DEVELOPMENT PLAN MAP AND TEXTUAL
 AMENDMENTS
 BYLAW 18P2015

APPENDIX II

Proposed Map 2: Primary Transit Network



This map represents a conceptual land use structure and transportation networks for the city as a whole. No representation is made herein that a particular site use or City investment, as represented on this map, will be made. Site specific assessments, including environmental contamination, as well as the future financial capacities of the City of Calgary must be considered before any land use or City investment decisions are made.



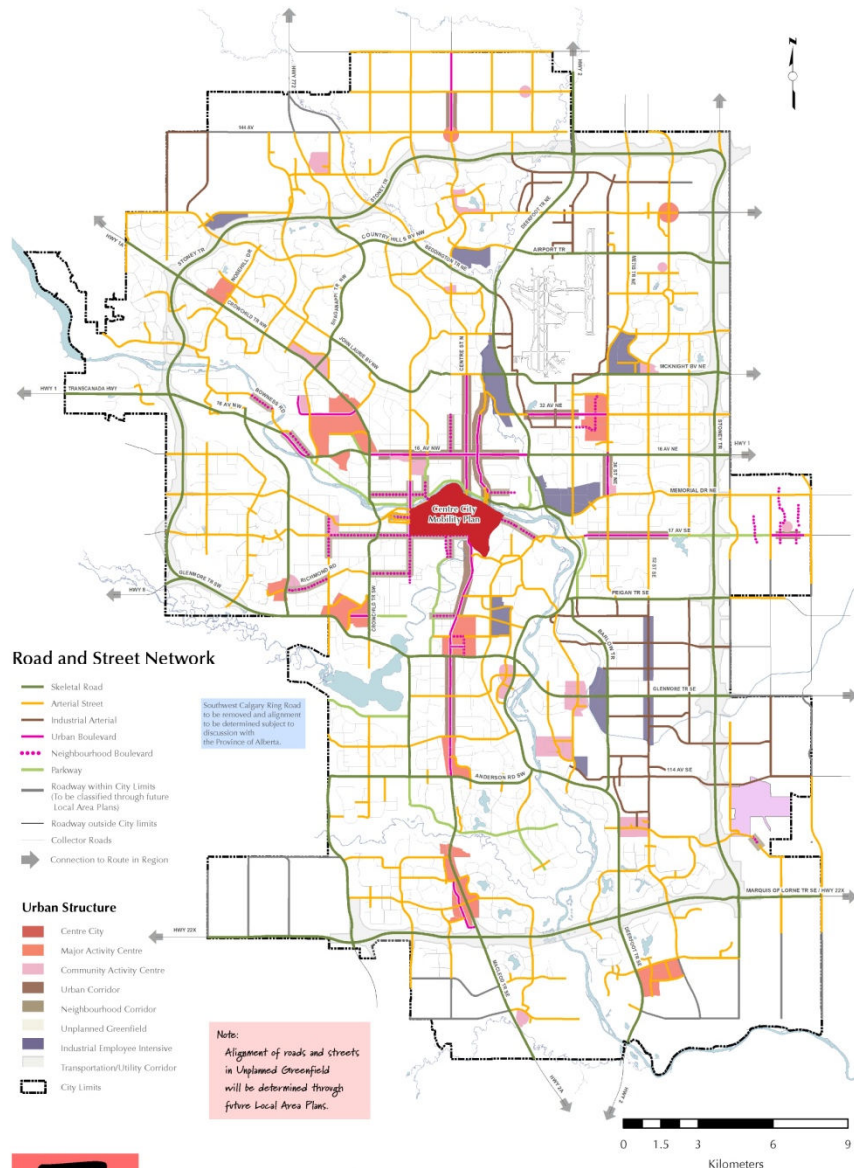
Primary Transit Network

X:\3P_Files_calgary\business_tech_sen\light\Map\Final\Document_Map\Map\PrimaryTransitNetwork.mxd

MISCELLANEOUS
 CITY-WIDE
 MUNICIPAL DEVELOPMENT PLAN MAP AND TEXTUAL
 AMENDMENTS
 BYLAW 18P2015

APPENDIX III

Proposed Map 3: Road and Street Network



Road and Street Network

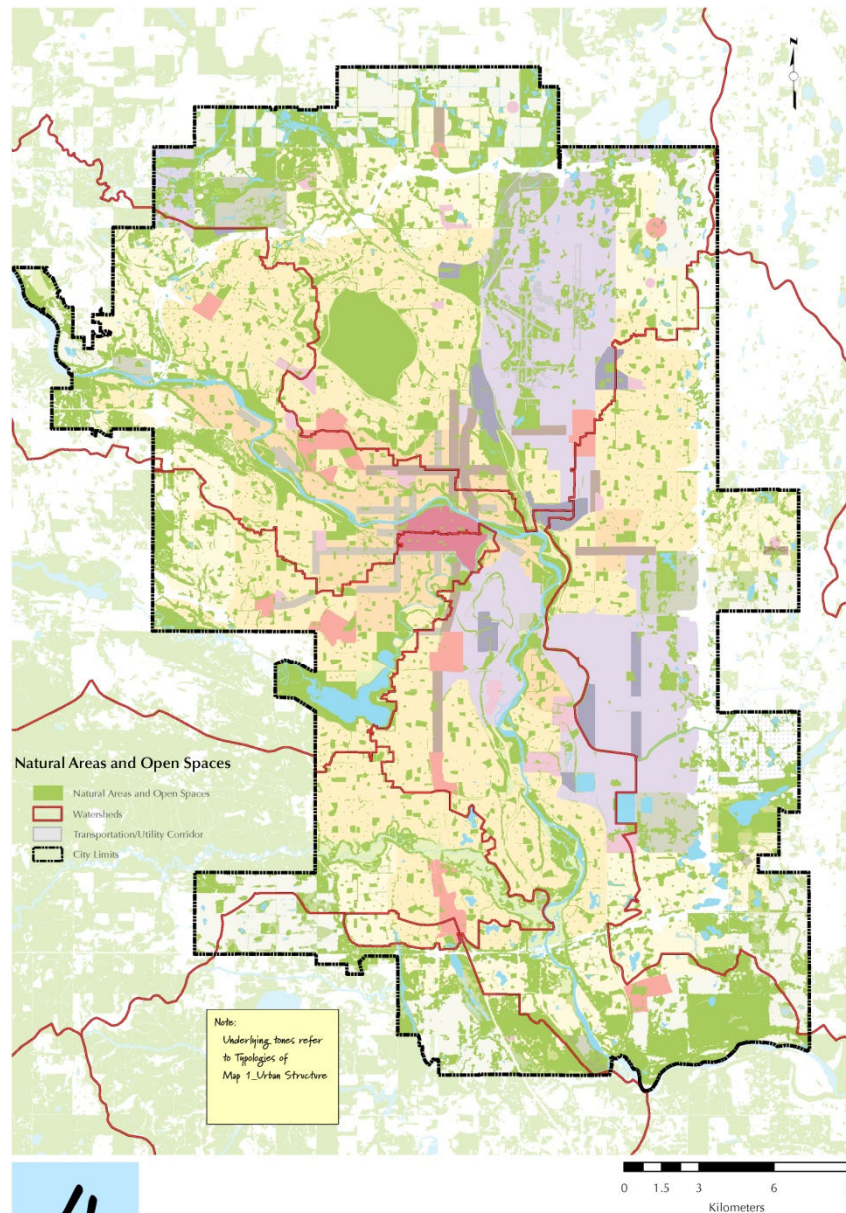
X:\39_Plan\1_calgary\Business_Tech_Serv\GIS\Maps_Plan\Document_Maps\MDP\RoadAndStreetNetwork.mxd

This map represents a conceptual land use structure and transportation networks for the city as a whole. No representation is made herein that a particular site use or City investment, as represented on this map, will be made. Site specific assessments, including environmental contamination, as well as the future financial capacities of the City of Calgary must be considered before any land use or City investment decisions are made.

MISCELLANEOUS
CITY-WIDE
MUNICIPAL DEVELOPMENT PLAN MAP AND TEXTUAL
AMENDMENTS
BYLAW 18P2015

APPENDIX IV

Proposed Map 4: Natural Areas and Open Spaces



4

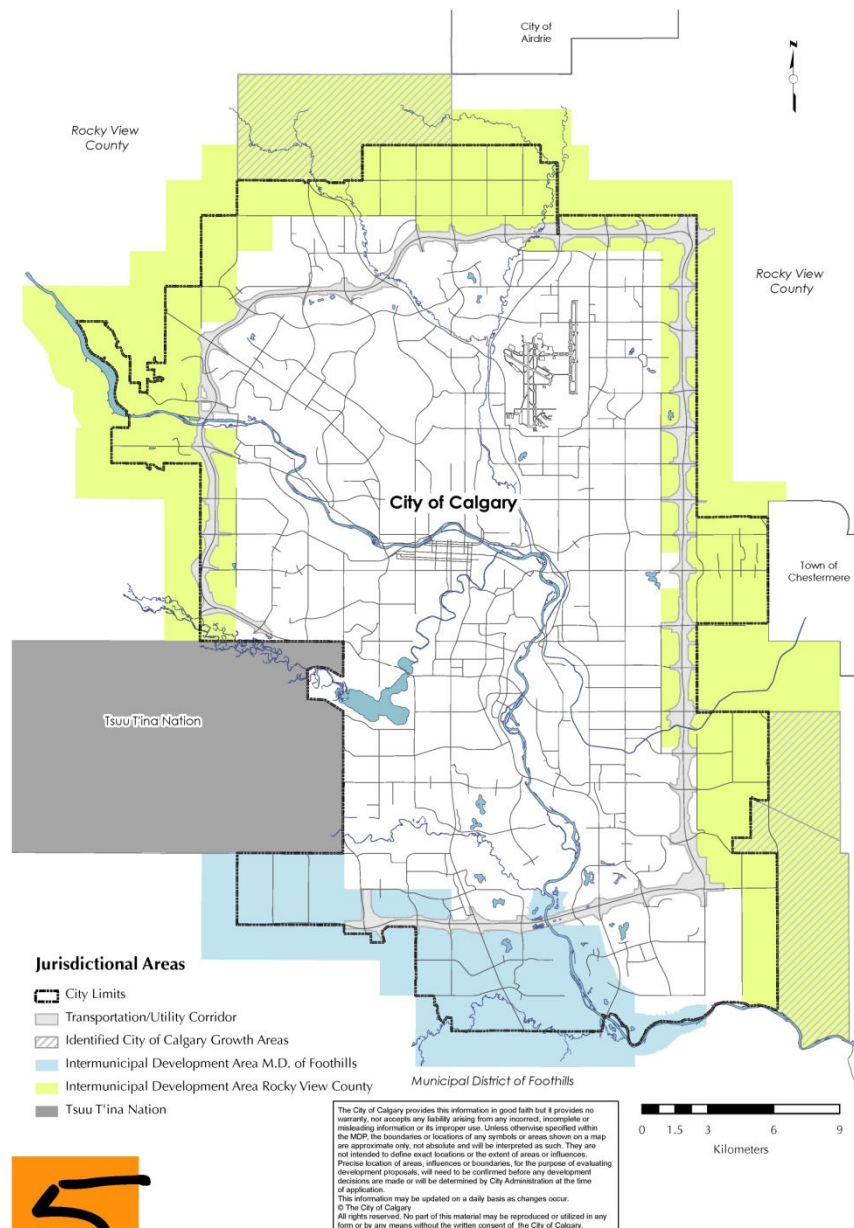
Natural Areas and Open Spaces

X:\32_Plan_3_calgary\Business_Tech_Serv\GIS\Map_Plan\Document_Maps\MDP_NaturalAreasAndOpenSpaces.mxd

MISCELLANEOUS
 CITY-WIDE
 MUNICIPAL DEVELOPMENT PLAN MAP AND TEXTUAL
 AMENDMENTS
 BYLAW 18P2015

APPENDIX V

Proposed Map 5: Jurisdictional Areas



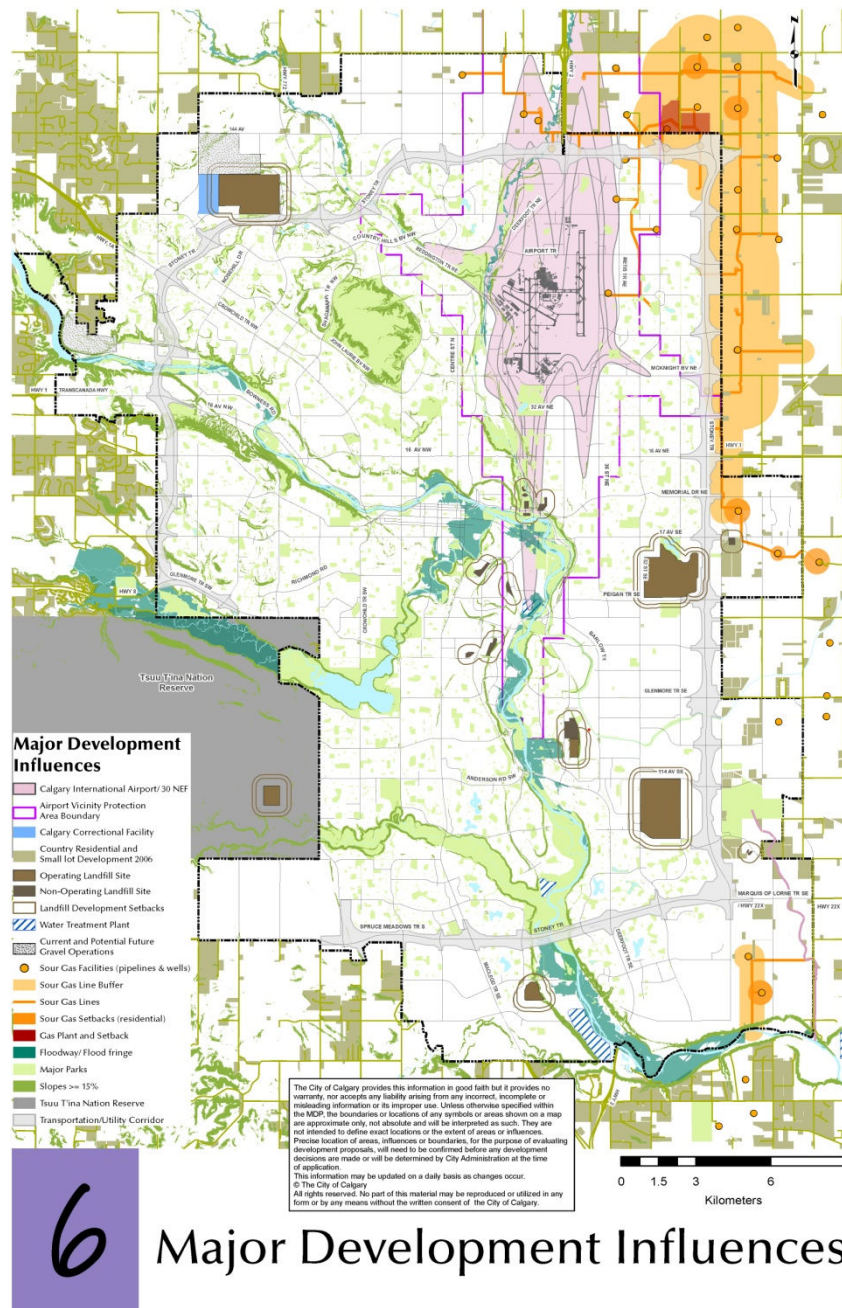
Jurisdictional Areas

X:\39_Plan_It_calgary\Business_Tech_Serv\GIS\Maps_Plan\Document_Maps\MDP\JurisdictionalAreas.mxd

MISCELLANEOUS
 CITY-WIDE
 MUNICIPAL DEVELOPMENT PLAN MAP AND TEXTUAL
 AMENDMENTS
 BYLAW 18P2015

APPENDIX VI

Proposed Map 6: Major Development Influences



X:\197_Fon_3_calgary\Business_Tech_San_Igitt\Map_1\Map_1\Map_1\MCP\MapDevelopmentInfluences.mxd