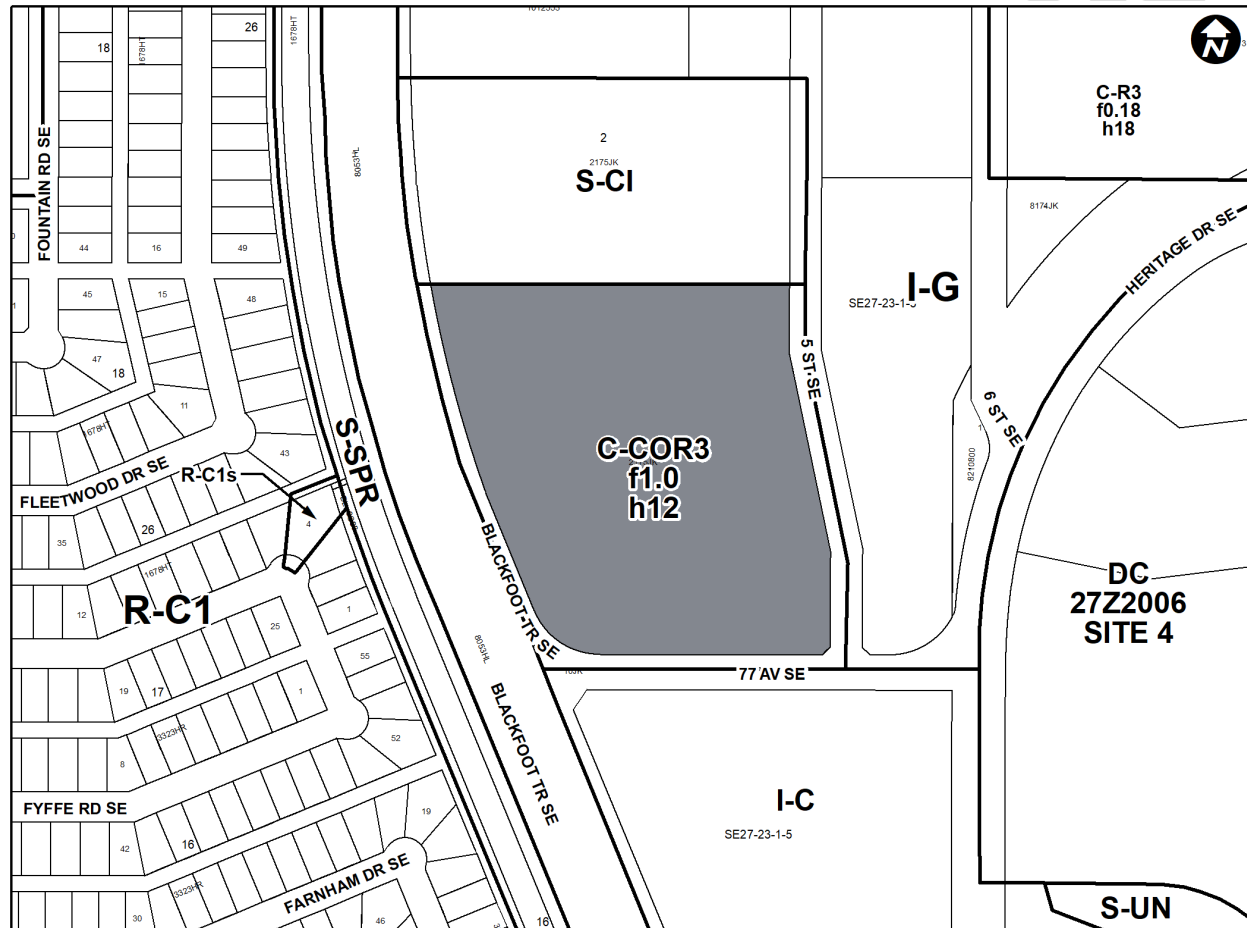
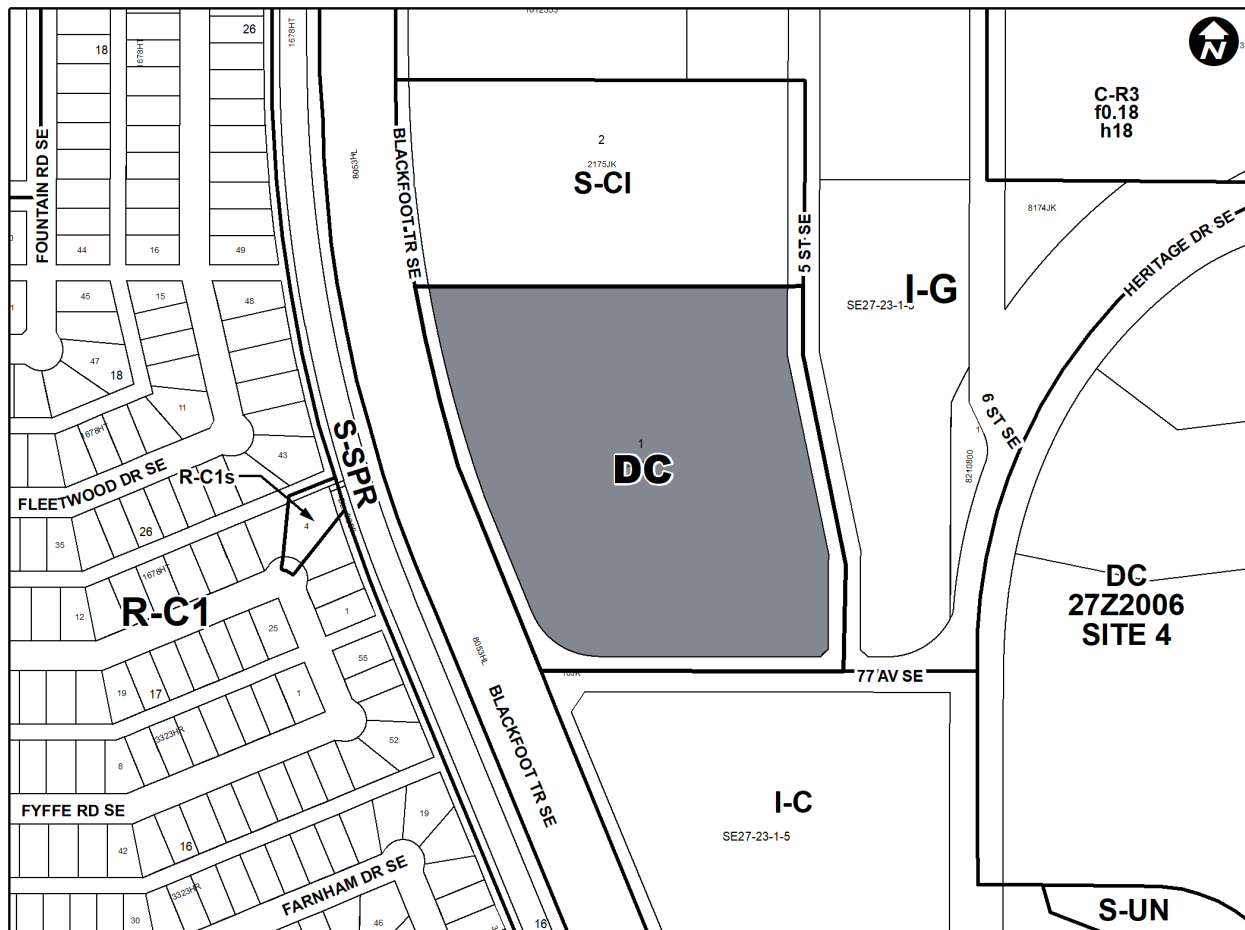


Proposed Direct Control District

1. The Land Use Bylaw, being Bylaw 1P2007 of the City of Calgary, is hereby amended by deleting that portion of the Land Use District Map shown as shaded on Schedule "A" to this Bylaw and replacing it with that portion of the Land Use District Map shown as shaded on Schedule "B" to this Bylaw, including any land use designation, or specific land uses and development guidelines contained in the said Schedule "B".

SCHEDULE A



SCHEDULE B**DIRECT CONTROL DISTRICT****Purpose**

- 1** This Direct Control District Bylaw is intended to:
- (a) allow for the additional use of school - private; and
 - (b) achieve a direct pedestrian connection to the adjacent site at 7530 Blackfoot Trail SE.

Compliance with Bylaw 1P2007

- 2** Unless otherwise specified, the rules and provisions of Parts 1, 2, 3 and 4 of Bylaw 1P2007 apply to this Direct Control District Bylaw.

Reference to Bylaw 1P2007

- 3** Within this Direct Control District Bylaw, a reference to a section of Bylaw 1P2007 is deemed to be a reference to the section as amended from time to time.

General Definitions

4 In this Direct Control District Bylaw:

- (a) “**direct pedestrian connection**” means a clearly defined connection that is designated for pedestrian use which may include, but is not limited to, sidewalks, raised crosswalks, painted lines, textured concrete or brick surface, and coloured surface materials.

Permitted Uses

5 The **permitted uses** of the Commercial – Corridor 3 (C-COR3) District of Bylaw 1P2007 are the **permitted uses** in this Direct Control District.

Discretionary Uses

6 The **discretionary uses** of the Commercial – Corridor 3 (C-COR3) District of Bylaw 1P2007 are the **discretionary uses** in this Direct Control District with the addition of:

- (a) **School – Private.**

Bylaw 1P2007 District Rules

7 Unless otherwise specified, the rules of the Commercial – Corridor 3 (C-COR3) District of Bylaw 1P2007 apply in this Direct Control District.

Floor Area Ratio

8 The maximum **floor area ratio** is 1.0

Building Height

9 The maximum **building height** is 12.0 metres.

Rules for School – Private

10 A **School – Private** must provide a **direct pedestrian connection** between its primary entrance and the **adjacent parcel** at 7530 Blackfoot Trail SE.

Relaxations

11 The **Development Authority** may relax the rules contained in Section 6 of this Direct Control District Bylaw in accordance with Sections 31 and 36 of Bylaw 1P2007.