



4th Quarter 2014 Statistical Report

Compiled by: Centralized Analysis Unit
CIAS, Strategic Services Division
© Calgary Police Service 2015



The Calgary Police Service provides this information in good faith but it provides no warranty, nor accepts any liability arising from any incorrect, incomplete or misleading information.



Table of Contents

<i>Calgary Crime Statistics – Static Numbers.....</i>	<i>1</i>
<i> Person Crimes – Static Numbers.....</i>	<i>2</i>
<i> Property Crimes – Static Numbers.....</i>	<i>3</i>
<i> Other Criminal Code Crimes – Static Numbers.....</i>	<i>4</i>
<i> Selected Other Crimes – Static Numbers.....</i>	<i>5</i>
<i>Domestic Related – Static Numbers.....</i>	<i>8</i>
<i>Youth Related – Static Numbers.....</i>	<i>9</i>

REPORT NOTES

Most of the statistical data in this report is derived from the Police Information Management System (PIMS) and compiled by the Centralized Analysis Unit. Using static numbers allows us to compare crime levels at a specific point in time and make an accurate determination of increases or decreases. Unless otherwise stated, previous years' data contained in this report reflect the number of offences reported in the original publication. Although late reporting may occur, and offences may continue to be cleared as time passes, these new events are not taken into account when preparing this statistical report. It is important to note that cases are often cleared months and sometimes years later. Cases "cleared by charge" and those "cleared otherwise" are included in these totals.



Calgary Crime Statistics - Static Numbers

The static crime numbers in this page are derived from historical Calgary Police Service statistical reports. These statistics are used in order to make a fair comparison using data which has not been allowed to increase due to late reporting of crime. Using static numbers allows us to compare crime levels at a specific point in time and make an accurate determination of increases or decreases.

4TH QUARTER 2014

	4th Quarter				Year to Date				
	Number of Offences				Number of Offences				
	2013	2014	5yr Ave (2009to2013)	% Change (5 Year)	2013	2014	5yr Ave (2009to2013)	% Change (5 Year)	% Cleared 2014
PERSON CRIMES									
Homicide	5	3	4.3	-30.8%	22	30	17.6	70.5%	70.0%
Other Offences Causing Death	0	0	0.2	-100.0%	0	0	0.6	-100.0%	N/A
Attempted Homicide	2	2	4.5	-55.6%	13	6	17.4	-65.5%	50.0%
Sex Offences	140	145	144.8	0.1%	779	772	779.4	-0.9%	29.3%
Robbery:									
Financial	7	9	9.7	-6.9%	34	35	39.6	-11.6%	45.7%
Commercial	85	50	77.7	-35.6%	207	195	270.8	-28.0%	39.0%
Person	131	141	149.3	-5.6%	588	604	679.6	-11.1%	21.2%
Home Invasion	11	8	13.3	-40.0%	44	50	59.6	-16.1%	16.0%
Total Robbery	234	208	258.4	-19.5%	873	884	1049.6	-15.8%	25.8%
Assault:									
Level 3 - Aggravated	22	25	25.3	-1.3%	110	109	107.4	1.5%	70.6%
Level 2 - Weapon/Bodily Harm	333	395	337.8	16.9%	1427	1475	1419.2	3.9%	55.9%
Level 1 - Common Assault	868	1079	939.2	14.9%	3621	4387	3832.6	14.5%	68.6%
Assault Police Officer	54	55	64.7	-14.9%	218	189	290.8	-35.0%	99.5%
Discharge Firearm with Intent	4	8	3.8	108.7%	14	21	9.6	118.8%	28.6%
Other Assaults	6	3	8.2	-63.3%	19	25	38.6	-35.2%	84.0%
Total Assault	1287	1565	1341.8	16.6%	5409	6206	5698.2	8.9%	66.5%
Misc Person Crimes	95	135	112.8	19.6%	461	488	512.6	-4.8%	56.1%
TOTAL PERSON CRIMES	1763	2058	1863.2	10.5%	7557	8386	8075.4	3.8%	58.2%

PROPERTY CRIMES									
Break and Enter:									
Residential B&E	700	631	628.5	0.4%	2479	2527	2553.0	-1.0%	15.1%
Commercial B&E	511	580	576.5	0.6%	2022	1993	2409.0	-17.3%	12.8%
Other B&E	223	328	210.7	55.7%	1045	1231	827.8	48.7%	11.9%
Unlawfully in Residence	13	14	11.3	23.5%	38	59	50.8	16.1%	76.3%
Total Break and Enter	1447	1553	1402.0	10.8%	5584	5811	5840.8	-0.5%	14.2%
Theft	4533	4798	4508.4	6.4%	19667	19788	20370.6	-2.9%	24.1%
Vehicle Theft (including attempts)	1339	1317	1184.3	11.2%	5137	4787	4700.8	1.8%	10.9%
Fraud Related	506	640	519.5	23.2%	2547	3052	2600.0	17.4%	34.1%
Other Property Crimes	1664	1638	1741.3	-5.9%	7058	6894	8127.8	-15.2%	26.2%
TOTAL PROPERTY CRIMES	9489	9946	9325.6	6.7%	39993	40332	41640.0	-3.1%	22.2%

OTHER CRIMINAL CODE									
Vice	36	2	37.0	-94.6%	132	66	143.4	-54.0%	95.5%
Gaming	0	0	0.4	-100.0%	1	1	2.8	-64.3%	100.0%
Weapon Related	198	242	267.6	-9.6%	943	884	1249.8	-29.3%	98.9%
Misc	1430	1442	1579.2	-8.7%	6047	6530	7050.0	-7.4%	89.2%
TOTAL OTHER CRIMINAL CODE	1664	1686	1884.2	-10.5%	7123	7481	8446.0	-11.4%	90.4%

TOTAL OVERALL CRIMINAL CODE	12916	13690	13076.0	4.7%	54673	56199	58168.0	-3.4%	36.7%
(excluding traffic)									

SELECTED OTHER									
Criminal Code Traffic	726	662	822.6	-19.5%	2944	2707	3370.8	-19.7%	99.9%
Drugs	409	390	418.6	-6.8%	1732	1808	1960.8	-7.8%	100.0%
Selected Non Criminal Code									
Accidental/Sudden Death	206	172	184.6	-6.8%	734	696	679.0	2.5%	N/A
Missing Persons	583	758	733.0	3.4%	2832	2936	3122.6	-6.0%	N/A
Court Order	270	295	251.2	17.4%	1231	1183	1060.0	11.6%	N/A
Domestic Information	3203	3220	3056.0	5.4%	13120	12833	12225.4	5.0%	N/A
Domestic Standby	184	230	185.0	24.3%	886	861	818.6	5.2%	N/A
Total Selected Non Criminal Code	4446	4675	4409.8	6.0%	18803	18509	17905.6	3.4%	N/A
Statutes (Federal/Provincial/Municipal)	156	200	201.2	-0.6%	811	812	978.8	-17.0%	99.3%
TOTAL SELECTED OTHER	5737	5927	5852.2	1.3%	24290	23836	24216.0	-1.6%	99.8%

Source: Static Data: (PIMS: January 2010 - January 2015)



Person Crime - Static Numbers

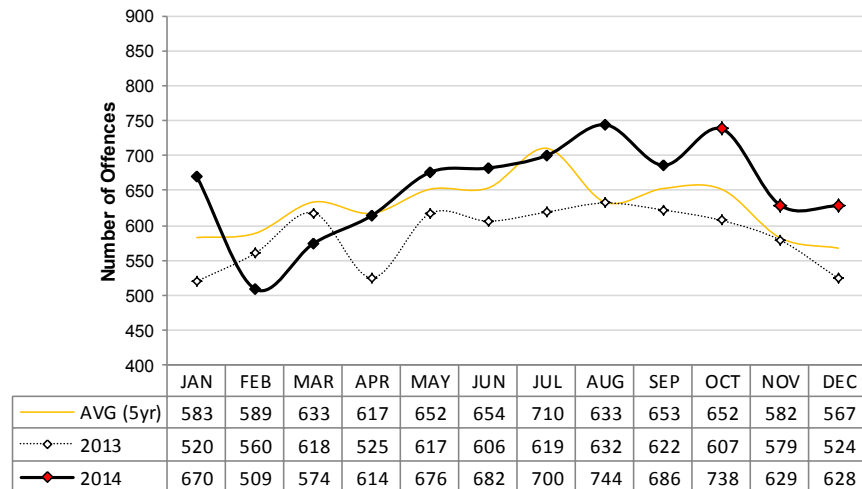
The static crime numbers in this page are derived from historical Calgary Police Service statistical reports. These statistics are used in order to make a fair comparison using data which has not been allowed to increase due to late reporting of crime. Using static numbers allows us to compare crime levels at a specific point in time and make an accurate determination of increases or decreases.

4TH QUARTER 2014

	4th Quarter				Year to Date				
	Number of Offences				Number of Offences				
	2013	2014	5yr Ave (2009to2013)	% Change (5 Year)	2013	2014	5yr Ave (2009to2013)	% Change (5 Year)	% Cleared 2014
PERSON CRIMES									
Homicide	5	3	4.3	-30.8%	22	30	17.6	70.5%	70.0%
Other Offences Causing Death	0	0	0.2	-100.0%	0	0	0.6	-100.0%	N/A
Attempted Homicide	2	2	4.5	-55.6%	13	6	17.4	-65.5%	50.0%
Sex Offences	140	145	144.8	0.1%	779	772	779.4	-0.9%	29.3%
Robbery:									
Financial	7	9	9.7	-6.9%	34	35	39.6	-11.6%	45.7%
Commercial	85	50	77.7	-35.6%	207	195	270.8	-28.0%	39.0%
Person	131	141	149.3	-5.6%	588	604	679.6	-11.1%	21.2%
Home Invasion	11	8	13.3	-40.0%	44	50	59.6	-16.1%	16.0%
Total Robbery	234	208	258.4	-19.5%	873	884	1049.6	-15.8%	25.8%
Assault:									
Level 3 - Aggravated	22	25	25.3	-1.3%	110	109	107.4	1.5%	70.6%
Level 2 - Weapon/Bodily Harm	333	395	337.8	16.9%	1427	1475	1419.2	3.9%	55.9%
Level 1 - Common Assault	868	1079	939.2	14.9%	3621	4387	3832.6	14.5%	68.6%
Assault Police Officer	54	55	64.7	-14.9%	218	189	290.8	-35.0%	99.5%
Discharge Firearm with Intent	4	8	3.8	108.7%	14	21	9.6	118.8%	28.6%
Other Assaults	6	3	8.2	-63.3%	19	25	38.6	-35.2%	84.0%
Total Assault	1287	1565	1341.8	16.6%	5409	6206	5698.2	8.9%	66.5%
Misc Person Crimes	95	135	112.8	19.6%	461	488	512.6	-4.8%	56.1%
TOTAL PERSON CRIMES	1763	2058	1863.2	10.5%	7557	8386	8075.4	3.8%	58.2%

Source: Static Data (PIMS: January 2010 - January 2015)

Person Crime-Static Numbers
YTD Jan 01 to Dec 31 2014





Property Crime - Static Numbers

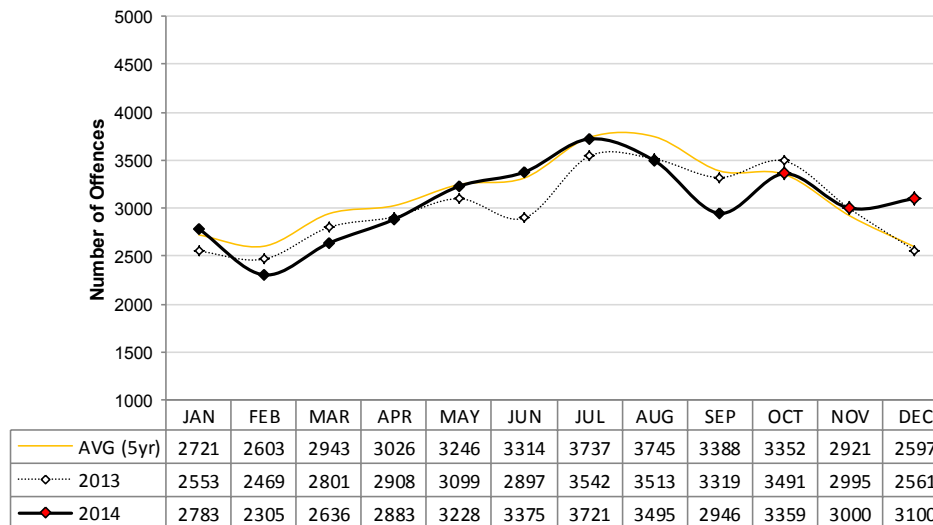
The static crime numbers in this page are derived from historical Calgary Police Service statistical reports. These statistics are used in order to make a fair comparison using data which has not been allowed to increase due to late reporting of crime. Using static numbers allows us to compare crime levels at a specific point in time and make an accurate determination of increases or decreases.

4TH QUARTER 2014

	4th Quarter Number of Offences				Year to Date Number of Offences				
	2013	2014	5yr Ave (2009to2013)	% Change (5 Year)	2013	2014	5yr Ave (2009to2013)	% Change (5 Year)	% Cleared 2014
PROPERTY CRIMES									
Break and Enter:									
Residential B&E	700	631	628.5	0.4%	2479	2527	2553.0	-1.0%	15.1%
Commercial B&E	511	580	576.5	0.6%	2022	1993	2409.0	-17.3%	12.8%
Other B&E	223	328	210.7	55.7%	1045	1231	827.8	48.7%	11.9%
Unlawfully in Residence	13	14	11.3	23.5%	38	59	50.8	16.1%	76.3%
Total Break and Enter	1447	1553	1402.0	10.8%	5584	5811	5840.8	-0.5%	14.2%
Theft	4533	4798	4508.4	6.4%	19667	19788	20370.6	-2.9%	24.1%
Vehicle Theft (including attempts)	1339	1317	1184.3	11.2%	5137	4787	4700.8	1.8%	10.9%
Fraud Related	506	640	519.5	23.2%	2547	3052	2600.0	17.4%	34.1%
Other Property Crimes	1664	1638	1741.3	-5.9%	7058	6894	8127.8	-15.2%	26.2%
TOTAL PROPERTY CRIMES	9489	9946	9325.6	6.7%	39993	40332	41640.0	-3.1%	22.2%

Source: Static Data (PIMS: January 2010 - January 2015)

Property Crime-Static Numbers
YTD Jan 01 to Dec 31 2014





Other CC Crime - Static Numbers

The static crime numbers in this page are derived from historical Calgary Police Service statistical reports. These statistics are used in order to make a fair comparison using data which has not been allowed to increase due to late reporting of crime. Using static numbers allows us to compare crime levels at a specific point in time and make an accurate determination of increases or decreases.

4TH QUARTER 2014

	4th Quarter Number Of Offences				Year to Date Number of Offences				
	2013	2014	5yr Ave (2009to2013)	% Change (5 Year)	2013	2014	5yr Ave (2009to2013)	% Change (5 Year)	% Cleared 2014
OTHER CRIMINAL CODE									
Vice	36	2	37.0	-94.6%	132	66	143.4	-54.0%	95.5%
Gaming	0	0	0.4	-100.0%	1	1	2.8	-64.3%	100.0%
Weapon Related	198	242	267.6	-9.6%	943	884	1249.8	-29.3%	98.9%
Misc	1430	1442	1579.2	-8.7%	6047	6530	7050.0	-7.4%	89.2%
TOTAL OTHER CRIMINAL CODE	1664	1686	1884.2	-10.5%	7123	7481	8446.0	-11.4%	90.4%

Source: Static Data (PIMS: January 2010 - January 2015)

WEAPONS & INTIMIDATION USAGE IN VIOLENT CRIME (MOST SERIOUS WEAPON PRESENT)

	4th Quarter Number of Incidents				Year to Date Number of Incidents			
	2013	2014	5yr Ave (2009to2013)	% Change (5 Year)	2013	2014	5yr Ave (2009to2013)	% Change (5 Year)
WEAPON TYPE								
Firearm	65	61	59.4	2.7%	211	207	236.4	-12.4%
Edged Weapon	171	175	157.4	11.2%	601	655	595.2	10.0%
OC Spray	44	52	33.8	53.8%	191	177	129.6	36.6%
Club/Blunt Object	17	33	25.4	29.9%	90	166	119.4	39.0%
Other	114	111	106.6	4.1%	457	434	451.8	-3.9%
Verbal Threat	118	104	121.6	-14.5%	3241	3577	3476.2	2.9%
Physical Force	954	1161	1050.8	10.5%	1275	1568	1438.6	9.0%
None Used	62	79	72.6	8.8%	312	313	339.8	-7.9%
Unknown/Not Stated	81	84	82.4	1.9%	343	346	349.8	-1.1%
TOTAL	1626	1860	1710.0	8.8%	6721	7443	7136.8	4.3%

Source: Static Data. (PIMS: January 2010 - January 2015)

Unit of Count: Incident Count. Most serious weapon present per incident where at least one violent offence occurred.

Previous years' data will not match with this statistical report due to changes implemented to conform with Statistics Canada Uniform Crime Reporting rules.

2014 INJURY LEVEL OF VICTIMS BY WEAPON TYPE (MOST SERIOUS WEAPON USED)

	4th Quarter Injury Level					Weapon Type	Year to Date Injury Level					Weapon Type
	Death	Major	Minor	Unknown / Not Stated	No Injury		Death	Major	Minor	Unknown / Not Stated	No Injury	
WEAPON TYPE												
Firearm	1	6	4	0	2	13	3	20	18	0	8	49
Edged Weapon	1	39	17	0	4	61	13	171	85	1	17	287
OC Spray	0	9	61	0	3	73	0	36	199	1	8	244
Club/Blunt Object	0	12	16	0	0	28	0	61	73	0	1	135
Other	0	27	63	0	7	97	1	88	230	1	34	354
Physical Force	0	110	683	9	74	876	3	464	2702	33	316	3518
Unknown/Not Stated	1	11	10	184	803	1009	5	30	34	798	3092	3959
TOTAL INJURED	3	214	854	193	893	2157	25	870	3341	834	3476	8546

Source: Static Data. (PIMS: January 2010 - January 2015)

Unit of Count: Victim injury level, in all violent offences.

¹ "Edged weapon" includes weapons classified as cutting and piercing instruments.

² "Other" weapons include any physical object not classified otherwise, such as fire, vehicle, body fluids, beverages and their containers, strangulation/ligature instruments, etc.



Selected Other Crime - Static Numbers

The static crime numbers in this page are derived from historical Calgary Police Service statistical reports. These statistics are used in order to make a fair comparison using data which has not been allowed to increase due to late reporting of crime. Using static numbers allows us to compare crime levels at a specific point in time and make an accurate determination of increases or decreases.

4TH QUARTER 2014

	4th Quarter Number of Offences				Year to Date Number of Offences				
	2013	2014	5yr Ave (2009to2013)	% Change (5 Year)	2013	2014	5yr Ave (2009to2013)	% Change (5 Year)	% Cleared 2014
SELECTED OTHER									
Criminal Code Traffic	726	662	822.6	-19.5%	2944	2707	3370.8	-19.7%	99.9%
Drugs	409	390	418.6	-6.8%	1732	1808	1960.8	-7.8%	100.0%
Selected Non Criminal Code ¹	4446	4675	4409.8	6.0%	18803	18509	17905.6	3.4%	N/A
Statutes (Fed/Prov/Municipal)	156	200	201.2	-0.6%	811	812	978.8	-17.0%	99.3%
TOTAL SELECTED OTHER	5737	5927	5852.2	1.3%	24290	23836	24216.0	-1.6%	99.8%

Source: Static Data (PIMS: January 2009 - January 2014)

TRAFFIC COLLISIONS AND OFFENCES

	4th Quarter Number of Offences				Year to Date Number of Offences			
	2013	2014	5yr Ave (2009to2013)	% Change (5 Year)	2013	2014	5yr Ave (2009to2013)	% Change (5 Year)
TRAFFIC								
Fatalities ²	12	7	8.6	-18.6%	41	28	28.8	-2.8%
Fatal Collisions ³	10	7	7.6	-7.9%	38	28	26.8	4.5%
Injury Collisions	757	729	687.6	6.0%	2810	2922	2632.2	11.0%
Property Damage Collisions	13281	11577	11198.6	3.4%	42218	42937	41937.8	2.4%
E-Collision ⁴ Reports	79	988	78.4	-	325	1357	196.4	-
Total Collisions	14127	13301	11972.2	11.1%	45391	47244	44793.2	5.5%
Total Parking Lot Collisions	2258	1933	2181.8	-11.4%	8909	8398	9737.8	-13.8%
Total Reportable Collisions⁵	11869	11368	9790.4	16.1%	36482	38846	35055.4	10.8%
CC Traffic Offences								
Impaired Operation	696	626	788.2	-20.6%	2800	2546	3208.2	-20.6%
Dangerous Driving	30	36	34.4	4.7%	144	161	162.6	-1.0%
TOTAL CRIMINAL CODE	726	662	822.6	-19.5%	2944	2707	3370.8	-19.7%

Source: Static data (PIMS: January 2010 - January 2011) and cumulative data (PIMS: January 2012 - January 2015). All CC traffic offences data is static.

NUMBER OF DRUG OFFENCES YEAR TO DATE

	2013	2014	5yr Ave (2009to2013)	% Change (5 Year)	% Cleared 2014	5yr Trend 2010-2014
DRUGS						
Demand	1037	735	956.7	-23.2%	100.0%	
Supply	695	1073	978.7	9.6%	100.0%	
Total	1732	1808	1935.3	-13.5%	100.0%	
Drug Type						
Cannabis	1037	988	1068.2	-7.5%	100.0%	
Cocaine/Crack	526	582	694.5	-16.2%	100.0%	
Heroin	37	60	30.2	98.9%	100.0%	
All Other Drugs	132	178	142.5	24.9%	100.0%	
TOTAL DRUGS	1732	1808	1960.8	-7.8%	100.0%	

Source: Static Data (PIMS: January 2010 - January 2015)

¹ Selected Non Criminal Code include: accidental/sudden death, missing persons, court order, domestic information, and domestic information standby.

² This number denotes the number of people killed as a result of a traffic collision.

³ The number of fatal collisions has been adjusted to adhere to Alberta Transportation guidelines governing motor vehicle collisions.

⁴ E-collision is a provincial data collection system which became operational in July 2009. At the time of printing of this report, a number of collision reports submitted into this system have yet to be downloaded into the CPS collision system where they can be classified based on severity and where it can be determined if they occurred in a parking lot and are thus excluded from the reportable number. E-collision reports are being downloaded to the CPS system daily which results in fluctuating counts of e-collision reports each quarter.

⁵ Total Reportable Collisions exclude collisions along private roadways or public parking lots.



Domestic-Related Statistics - Static Numbers

The static crime numbers in this page are derived from historical Calgary Police Service statistical reports. These statistics are used in order to make a fair comparison using data which has not been allowed to increase due to late reporting of crime. Using static numbers allows us to compare crime

4TH QUARTER 2014

	4th Quarter Number Of Offences				Year to Date Number of Offences			
	2013	2014	5yr Avge (2009to2013)	% Change (5 Year)	2013	2014	5yr Avge (2009to2013)	% Change (5 Year)
DOMESTIC CRIMES								
PERSON CRIMES								
Homicide	1	0	2.0	-100.0%	7	3	4.4	-31.8%
Other Offences Causing Death	0	0	0.0	N/A	0	0	0.0	N/A
Attempted Homicide	0	0	1.4	-100.0%	3	1	2.4	-58.3%
Sex Offences	42	46	39.8	15.6%	135	151	135.2	11.7%
Robbery	0	2	1.8	11.1%	2	9	8.4	7.1%
Assault	521	749	565.8	32.4%	2151	2805	2321.8	20.8%
Miscellaneous ¹	52	59	61.0	-3.3%	188	195	247.0	-21.1%
TOTAL PERSON CRIMES	616	856	671.8	27.4%	2486	3164	2719.2	16.4%
PROPERTY CRIMES								
Break & Enter	23	37	29.4	25.9%	120	142	136.8	3.8%
Theft	49	103	74.6	38.1%	246	351	301.6	16.4%
Fraud	14	34	20.2	68.3%	63	88	75.4	16.7%
Other Property	123	158	137.6	14.8%	491	582	554.8	4.9%
TOTAL PROPERTY CRIMES	209	332	261.8	26.8%	920	1163	1068.6	4.1%
TOTAL OTHER CC²	246	360	308.6	16.7%	1091	1278	1330.6	-4.0%
TOTAL DOMESTIC INCIDENTS	1071	1548	1242.2	24.6%	4497	5605	5118.4	8.5%

Source: Static Data (PIMS: January 2010 - January 2015)

Unit of Count: incident (property crime and other criminal code), victim (person crimes)

	4th Quarter Number of Incidents				Year to Date Number of Incidents			
	2013	2014	5yr Avge (2009to2013)	% Change (5 Year)	2013	2014	5yr Avge (2009to2013)	% Change (5 Year)
DOMESTIC INCIDENTS								
Domestic Information	3203	3220	3056.0	5.4%	13120	12833	12225.4	5.0%
Domestic Standby	184	230	185.0	24.3%	886	861	818.6	5.2%
TOTAL	3387	3450	3241.0	6.4%	14006	13694	13044.0	5.0%

Source: Static Data (PIMS: January 2010 - January 2015)

Homicide statistics includes: 1st degree homicide, 2nd degree homicide, manslaughter and infanticide. Other offences causing death include criminal negligence.

Attempted homicide includes: attempted murder and conspiracy to commit.

¹ Miscellaneous person crime consists of: kidnapping/abduction, forcible confinement, extortion, criminal harassment and indecent/harrassing calls.

² Other CC includes offences in categories of miscellaneous Criminal Code, explosives/w/ weapons, vice and gaming-related offences.



Youth-Related Statistics - Static Numbers

The static crime numbers in this page are derived from historical Calgary Police Service statistical reports. These statistics are used in order to make a fair comparison using data which has not been allowed to increase due to late reporting of crime. Using static numbers allows us to compare crime levels at a specific point in time and make an accurate determination of increases or decreases.

4TH QUARTER 2014

	4th Quarter Number of Offenders				Year to Date Number of Offenders			
	2013	2014	5yr Avg (2009to2013)	% Change (5 Year)	2013	2014	5yr Avg (2009to2013)	% Change (5 Year)
YOUTH OFFENDERS								
PERSON CRIMES								
Homicide	0	0	0.2	-100.0%	1	3	0.4	650.0%
Other Offences Causing Death	0	0	0.0	N/A	0	0	0.0	N/A
Attempted Homicide	0	0	0.2	-100.0%	0	0	0.4	-100.0%
Sex Offences	0	1	4.0	-75.0%	13	7	16.8	-58.3%
Robbery	17	15	27.2	-44.9%	53	69	95.0	-27.4%
Assault	84	73	104.0	-29.8%	337	336	441.0	-23.8%
Miscellaneous	5	1	3.4	-70.6%	16	10	14.4	-30.6%
TOTAL YOUTH PERSON CRIMES	106	90	139.0	-35.3%	420	425	568.0	-25.2%
PROPERTY CRIMES								
Break & Enter	5	12	23.8	-49.6%	45	84	106.4	-21.1%
Theft	161	145	282.8	-48.7%	759	710	1245.2	-43.0%
Fraud	7	4	9.8	-59.2%	16	14	36.0	-61.1%
Other Property	48	19	52.2	-63.6%	160	125	240.4	-48.0%
TOTAL YOUTH PROPERTY CRIMES	221	180	368.6	-51.2%	980	933	1628.0	-42.7%
OTHER CRIMES								
Other CC ¹	82	76	118.0	-35.6%	340	374	467.4	-20.0%
CC Traffic	5	2	5.2	-61.5%	15	13	18.4	-29.3%
Drugs	52	35	57.4	-39.0%	198	172	224.6	-23.4%
YCJA	23	23	31.6	-27.2%	118	130	156.4	-16.9%
TOTAL YOUTH OTHER CRIMES	162	136	212.2	-35.9%	671	689	866.8	-20.5%
TOTAL YOUTH CRIMES	489	406	719.8	-43.6%	2071	2047	3062.8	-33.2%

Source: Static Data (PIMS: January 2015)

Unit of Count: Most serious violation per accused. Calculations are based on offences cleared. Youth offenders are between the ages of 12 and 17 years.

YOUTH VICTIMS

	4th Quarter Number of Victims				Year to Date Number of Victims			
	2013	2014	5yr Avg (2009to2013)	% Change (5 Year)	2013	2014	5yr Avg (2009to2013)	% Change (5 Year)
YOUTH VICTIMS								
PERSON CRIMES								
Homicide	0	0	0.6	-100.0%	1	1	1.6	-37.5%
Other Offences Causing Death	0	0	0.0	N/A	0	0	0.0	N/A
Attempted Homicide	0	0	0.0	N/A	0	1	1.4	-28.6%
Sex Offences	37	34	59.2	-42.6%	321	207	240.8	-14.0%
Robbery	29	26	52.2	-50.2%	138	136	209.8	-35.2%
Assault	117	162	150.4	7.7%	573	620	617.8	0.4%
Miscellaneous	7	17	11.0	54.5%	50	54	54.2	-0.4%
TOTAL YOUTH PERSON VICTIMS	190	239	273.4	-12.6%	1083	1019	1125.6	-9.5%
PROPERTY CRIMES								
Break & Enter	25	16	15.2	5.3%	84	63	56.4	11.7%
Theft	160	101	146.4	-31.0%	620	531	578.4	-8.2%
Fraud	5	3	3.8	-21.1%	21	13	13.4	-3.0%
Other Property	19	14	13.0	7.7%	58	41	54.0	-24.1%
TOTAL YOUTH PROPERTY VICTIMS	209	134	178.4	-24.9%	783	648	702.2	-7.7%
OTHER CRIMES								
Other CC ¹	25	22	36.8	-40.2%	134	125	131.8	-5.2%
CC Traffic	1	0	1.2	-100.0%	1	1	4.8	-79.2%
Drugs	0	0	0.0	N/A	0	0	0.0	N/A
Youth Criminal Justice Act (YCJA)	0	0	0.0	N/A	0	0	0.0	N/A
TOTAL YOUTH OTHER VICTIMS	26	22	38.0	-42.1%	135	126	136.6	-7.8%
TOTAL YOUTH VICTIMS	425	395	489.8	-19.4%	2001	1793	1964.4	-8.7%

Source: Static Data (PIMS: January 2015)

Unit of Count: Most Serious Violation per Victim. Youth victims are victims aged 0 to 17 years.

¹ Other CC includes offences in categories of miscellaneous Criminal Code, explosives/w/ weapons, vice and gaming-related offences.