

2022 Sound Wall Lifecycle Replacement Proposed Program Locations

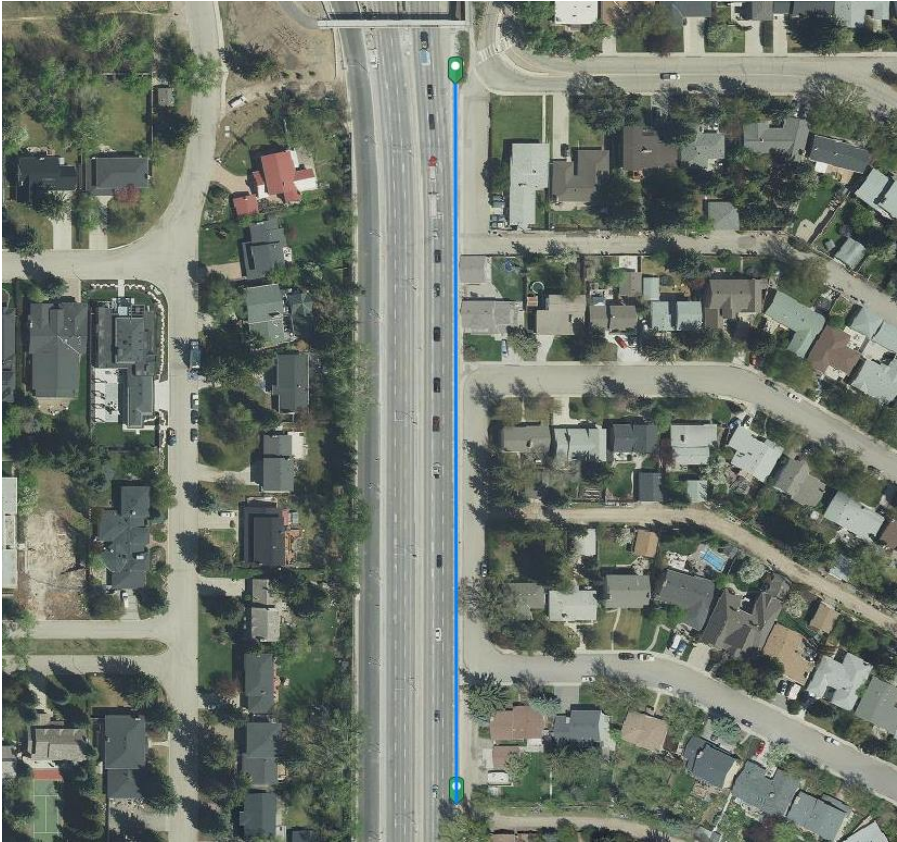
Location: 14 Street SW , between 75 Avenue SW to Chardie Road SW (south back lane).

Approximate Length & Height: 250 meters long, 4 – 4.2 meters tall.

Estimated In Service Date: 1985.

Material: Concrete – porous, basket weave design.

Condition: Fair to poor. Lower panels exhibiting deterioration, reinforced rebar exposed intermittently.



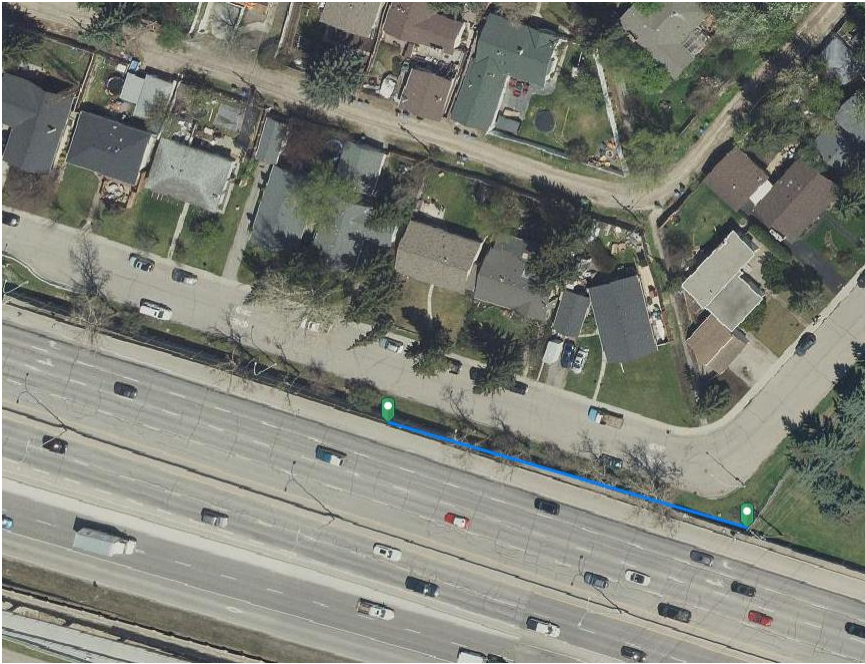
Backlane, south of 75 Avenue SW



Example: 14 Street SW & Glenmore Trail SW. Pre-cast concrete w/ stack stone pattern

Location: Langrville Drive SW (approx. 2212 – 2204).
Approximate Length & Height: 70 meters long, 4 – 4.2 meters tall.
Estimated In Service Date: 1982.

Material: Concrete – porous, basket weave design.
Condition: Fair to poor. Lower & upper panels exhibiting deterioration reinforced rebar exposed intermittently, 6" hole along lower portion of the wall.



Adjacent to 2212



Adjacent to 2208/ 2204

Proposed new Sound Wall System.



Example: Crowchild Trail SW & Glenmore Trail SW – precast concrete panel w/ brick lay patten