

Development Permit (DP2021-2435) Summary

This Development Permit was submitted by S2 Architecture on 2021 April 13. It proposes a mixed-use building 22 metres in height with 82 Dwelling Units, 8 Live Work Units, and ~375 square metres of commercial floor space.

Figure 1 - Rendering



Figure 2 – Site Plan

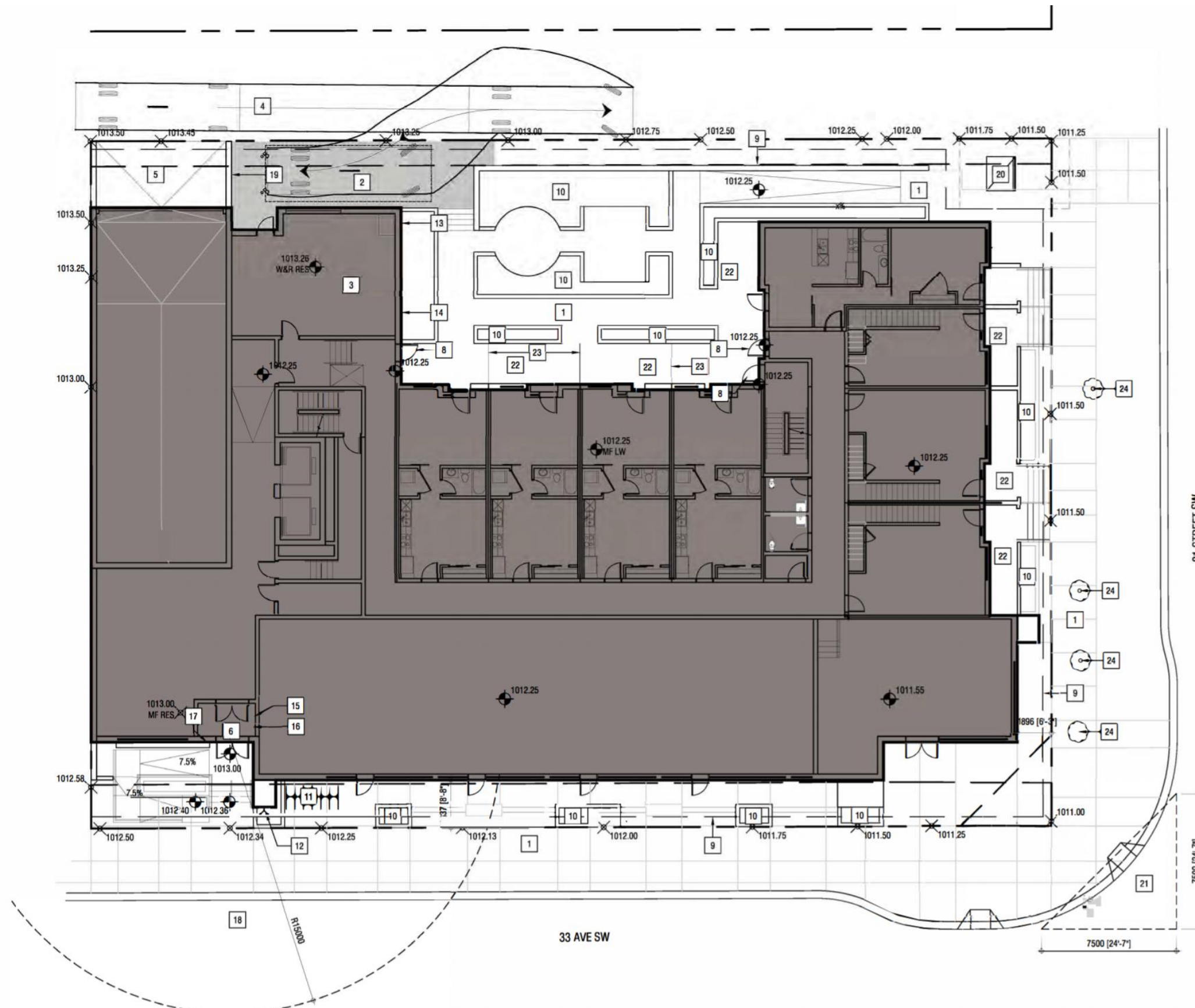


Figure 3 – North and East Elevations

