

4.1.3 Neighbourhood Park

The neighbourhood park provides a needed public green space within the urban zone. The park is design to be flexible in its program options to allow for a multitude of uses. As density increases, there is less opportunity to provide green spaces for public use, this design meets that need by creating a connection and gathering area in a currently unused, unmaintained space. This space is not limited to the role of solely a public space, building on the community gardens already within the community, the design includes trees that may grow fruit with the maintenance and foraging potentially managed by community members. The design also includes an open lawn for passive recreation, a picnic area and landscaped berms that provide an informal play space for children of all ages. The retaining wall included also provides a great opportunity for a community mural or art which will be better defined during detailed design.

Project Outcomes:

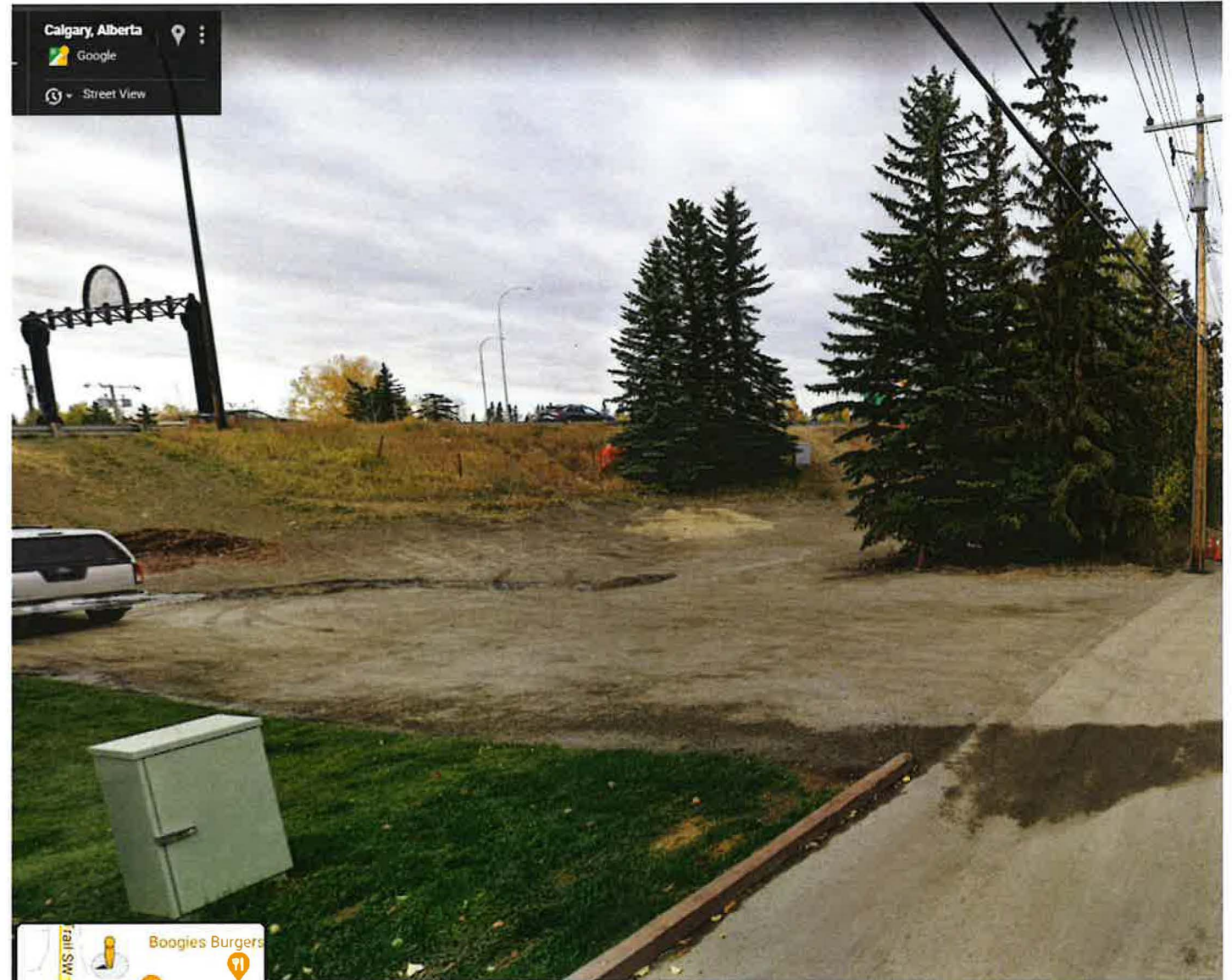
- Integrated park between Marda Loop and the Crowchild SWBRT station.
- The open lawn and picnic area act as key community gathering space.
- Increased landscaping to support pedestrian comfort.
- New all access pedestrian connections to support increased mobility.



Figure 18 - Neighbourhood Park adjacent to the SWBRT Plaza with Connection to 33rd Avenue SW

- | | | | | |
|---------------------------------|-----------------------|---------------|---------------|---|
| ① Raised Planter | ③ Laneway Fencing | ⑤ Aspen Grove | ⑦ Open Lawn | ⑨ Pathway Connection between SWBRT and 33rd Avenue SW |
| ② Retaining Wall with Hand Rail | ④ Pedestrian Lighting | ⑥ Fruit Trees | ⑧ Picnic Area | |

DESIGN CONCEPTS



The promises we get ...

The reality.

We contantly hear that increasing density is going to improve neighbourhoods and amenties. We have NOT seen that. We have seen a decline in quality, amenties and movability.

