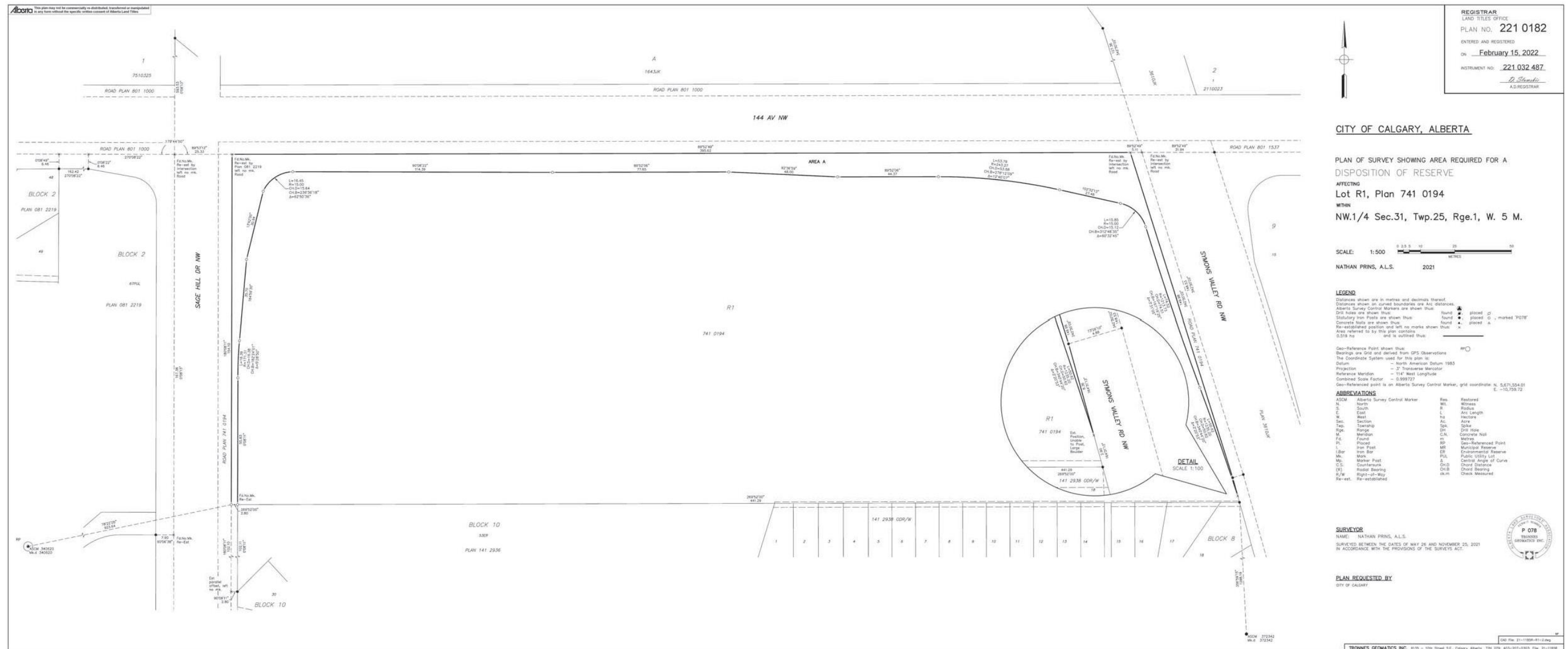


Filed Plan



REGISTRAR
LAND TITLES OFFICE
PLAN NO. 221 0182
ENTERED AND REGISTERED
ON February 15, 2022
INSTRUMENT NO. 221 032 487
A.D. REGISTRAR



CITY OF CALGARY, ALBERTA

PLAN OF SURVEY SHOWING AREA REQUIRED FOR A
DISPOSITION OF RESERVE
AFFECTING
Lot R1, Plan 741 0194
WITHIN
NW.1/4 Sec.31, Twp.25, Rge.1, W. 5 M.

SCALE: 1:500
NATHAN PRINS, A.L.S. 2021

LEGEND
Distances shown are in metres and decimals thereof.
Distances shown on curved boundaries are arc distances.
Alberta Survey Control Markers are shown thus: found placed
Concrete Nails are shown thus: found placed
Re-established position and left no marks shown thus: found
Area referred to by this plan contains and is outlined thus:

Geo-Reference Point shown thus:
Bearings are Grid and derived from GPS Observations
The Coordinate System used for this plan is:
Datum - North American Datum 1983
Projection - 3° Transverse Mercator
Reference Meridian - 114° West Longitude
Combined Scale Factor - 0.99997
Geo-Referenced point is an Alberta Survey Control Marker, grid coordinate N: 5,671,554.01 E: -10,759.72

ABBREVIATIONS

ASCM	Alberta Survey Control Marker	Res.	Restored
N	North	Wit.	Witness
S	South	R	Radius
E	East	L	Lot Length
W	West	ha	Hectare
Sec.	Section	Ac.	Acre
Twp.	Township	Sq.	Square
Rge.	Range	Ch.	Chain
M	Metre	Ch.	Concrete Nail
F.	Foot	m	Metre
Pt.	Point	SP	Survey-Referenced Point
I.	Iron	MS	Municipal Reserve
Iron Pk.	Iron Post	ER	Encompassed Reserve
Mk.	Mark	PLS	Public Utility Lot
Mk. Post	Marker Post	S	Central Angle of Curve
C.S.	Countersunk	Ch.D	Chord Distance
B	Bearing	Ch.B	Chord Bearing
R/W	Right-of-Way	ckm	Check Measured
Re-est.	Re-established		

SURVEYOR
NAME: NATHAN PRINS, A.L.S.
SURVEYED BETWEEN THE DATES OF MAY 26 AND NOVEMBER 25, 2021
IN ACCORDANCE WITH THE PROVISIONS OF THE SURVEYS ACT.



PLAN REQUESTED BY
CITY OF CALGARY