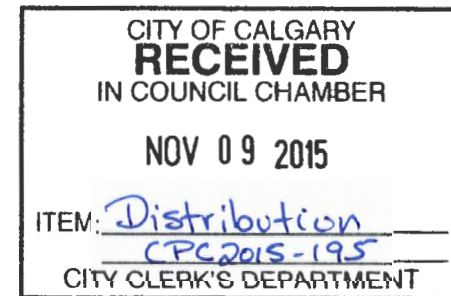


LOC2015-0084
#4 Winslow Crescent SW
Change of use application



- Residential – Contextual One/Two Dwelling
(R-C2) District
- DC – Direct Control District; Special Use



Pathways is a clinic that offers assistance to children with learning and developmental delays and their families. We are speech therapy and occupational therapy focused and see our families by appointment only.

It is our mission to provide an environment which empowers children and their caregivers to realize their potential by providing a developmentally appropriate pathway for growth.

Autism Spectrum Disorders | Attention Deficit | Hyperactivity Disorder | Sensory Processing Disorder | Apraxia |
Developmental Coordination Disorder | Developmental Delay | Learning Disabilities | Delays in Literacy | Written
Output Disorder | Feeding Delays | Speech Delays | Language Delays | Social Communication Delays

Speech-Language Pathologist

Speech-language pathology is a field of expertise practiced by a clinician known as a **Speech-language pathologist (SLP)**, also called **speech and language therapist**,^[1] or **speech therapist**, who specializes in the evaluation and treatment of communication disorders and swallowing disorders.

Occupational Therapist

The role of an **occupational therapist** is to work with a client to help them achieve a fulfilled and satisfied state in life through the use of "purposeful activity or interventions designed to achieve functional outcomes which promote health, prevent injury or disability and which develop, improve, sustain or restore the highest possible level of independence."

Source: Wikipedia

Case History

What we were told the best description is - **"Medical Use"**

- No support from;
 - Community
 - CPC

Feed back;

- (CPC) Reasons for support of the Refusal recommendation from Ms. Gondek:
 - It was painful to recommend refusal for this item. While I agree that more speech-language pathology service providers are desperately needed in Calgary, the proposed land use is problematic. If Council can direct Administration to find a way to accommodate this use as something other than "Medical Clinic", that would be a great option.

Case History

"Special use"

- *Speech-language Pathology Service means a use:*
- (i) *where speech-language pathologists work to prevent, assess, diagnose, and treat speech, language, social communication, cognitive-communication, and swallowing disorders in children; and*
- (ii) *the maximum of two speech-language pathologists and two clients are allowed at one time.*

Good Neighbour Agreement

Parties;

Community of Westgate
4943-8 Ave SW
Calgary, AB.
T3C 3V4

Pathways Pediatric Services
#4 Winslow Crescent SW
Calgary, AB.
T3C 2R1

Pathways

1. Pathways will operate their business with no more than two therapy rooms, thus keeping vehicular traffic to and from our location to the minimum required to provide our “by appointment only” family based service.
2. Pathways agrees to prioritize the children and families of the Westgate Community.
3. If we choose to sell our building , we will proceed through the proper channels with the city to change the use of the property back to its original designated use of R-C2 zoning.

Westgate Community Association

1. The community of Westgate agrees to support Pathways change of use application with the City of Calgary.

Location



The O'Leary's

September, 22nd 2015

To Whom it may concern;

We live on the property directly west of number 4 & 6 Winslow Crescent, and have been fully advised of the plans of Mike & Tanya Sloane/Pathways Pediatric Services to operate a Speech Clinic out of unit # 4. They have been upfront and honest with their intentions since our introduction to each other in early May of this year, and we support their efforts in bringing this family based service to our community.

Sincerely,

Handwritten signatures of Laurel and Brad O'Leary in blue ink, separated by a plus sign.

Laurel & Brad O'Leary

5007 Waverley Drive, SW
Calgary, AB T3C 2P6

We Introduced Ourselves

Hello, we are Tanya & Mike Sloane. We are your new neighbours at #4 Winslow Crescent (the duplex on the corner). We are leaving you with this note to explain our intentions to change the use of this unit from R-C2 (residential) to a Direct Control (small business use) with the city so we can operate our family services business out of it, while the other unit (#6) will remain a rental.

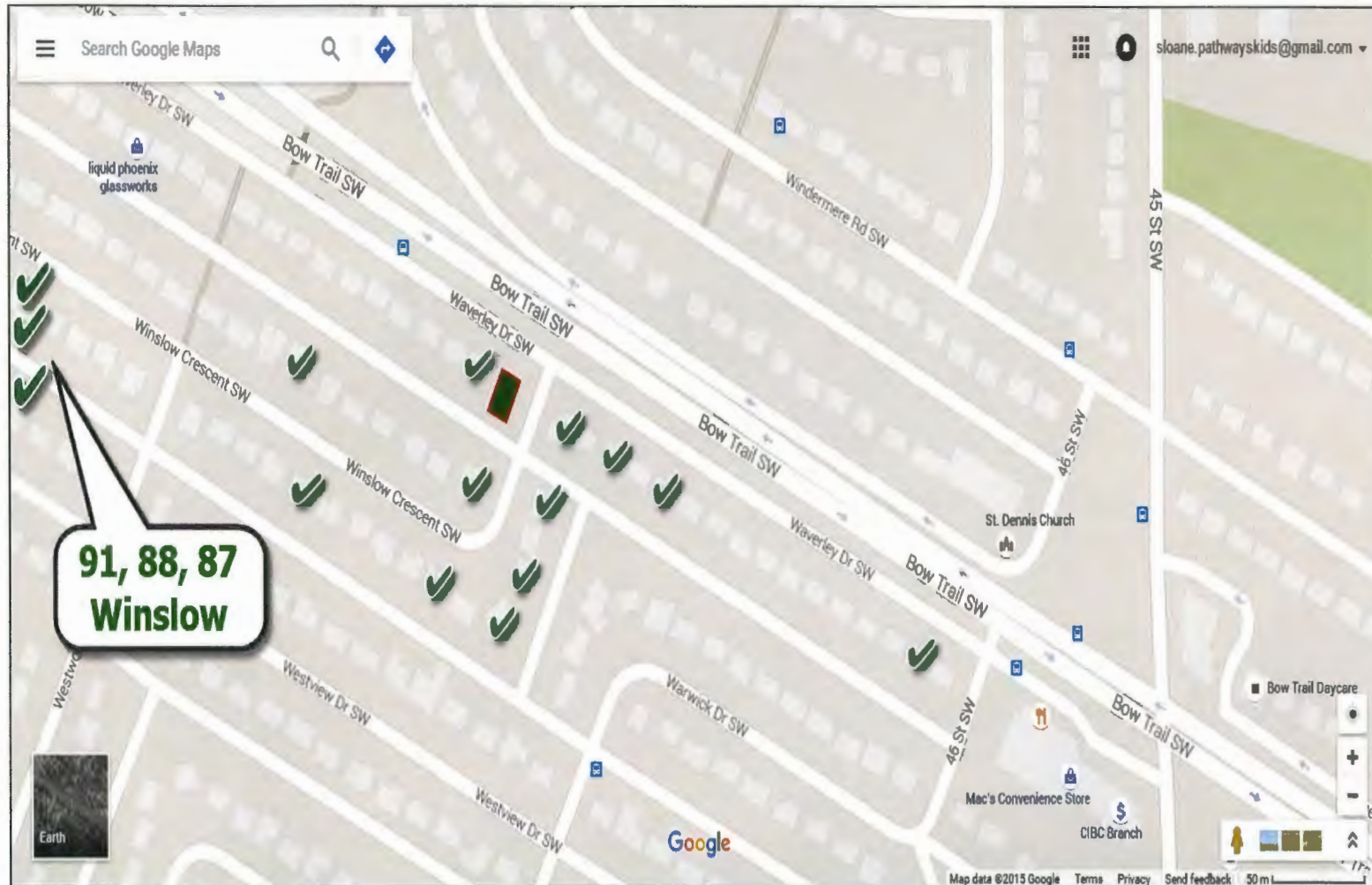
Pathways is a clinic that offers assistance to children with learning and developmental delays and their families. We are speech therapy and occupational therapy focused and see our families by appointment only.

We have a maximum of two therapists working at one time. Children are seen for individual therapy sessions, and are scheduled with 15 minute increments between appointments to ensure client confidentiality. Each therapist will see between 4-6 clients per day when working in the clinic (our therapists also work at the schools our little people attend and as a result are not always at the clinic). Our hours of operation are Monday – Friday from 8:00 to 5:30.

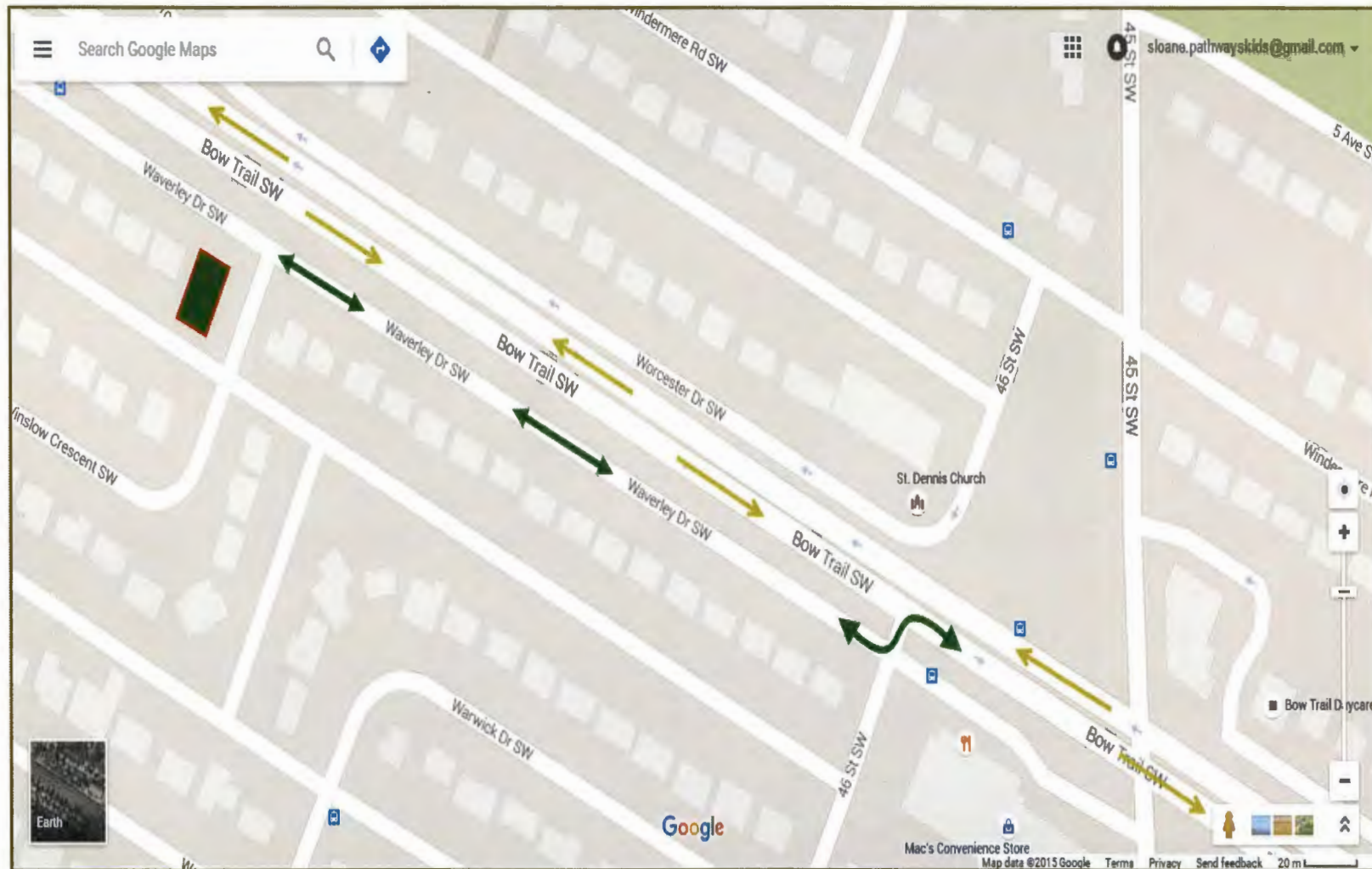
Thank you for your time today!

Sincerely,
Tanya & Mike Sloane.

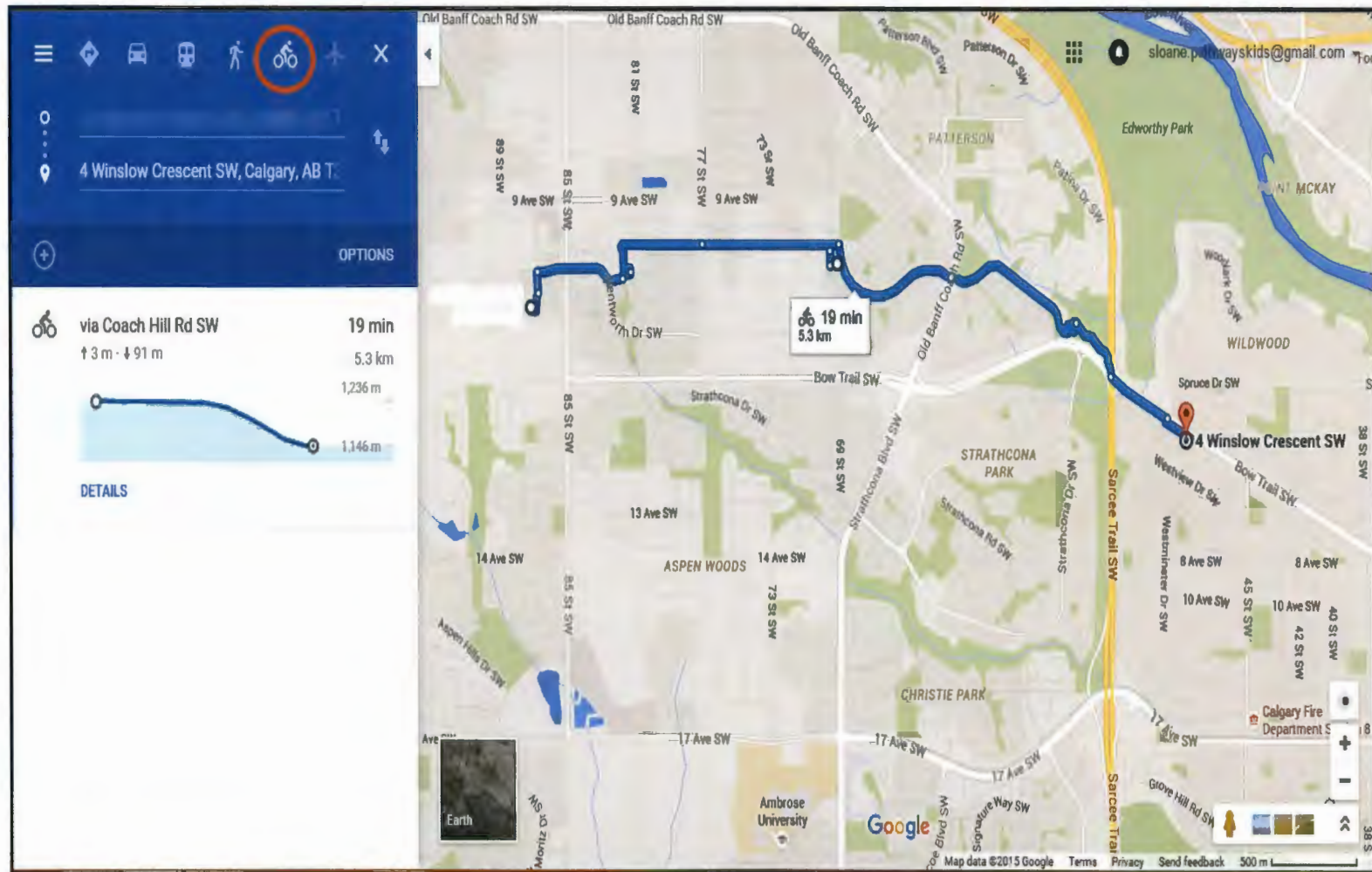
Support of our Neighbours



Traffic Flow



Bike Route



***Enabling little people to
accomplish great things*** 



Sydney & Tanya

Thank You,

