



Calgary Planning Commission

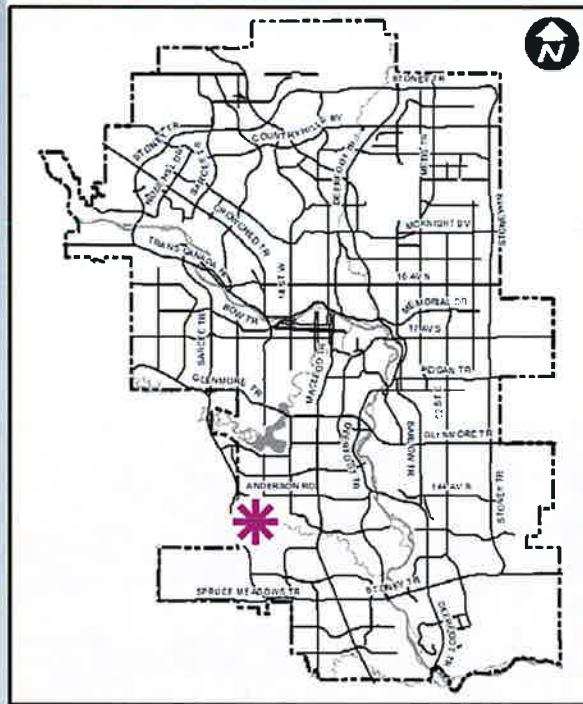
Agenda Item: 7.2.1

CITY OF CALGARY
RECEIVED
IN COUNCIL CHAMBER

FEB 10 2022

ITEM: 7.2.1 CPC2022-0034
Distribution - Presentation
CITY CLERK'S DEPARTMENT

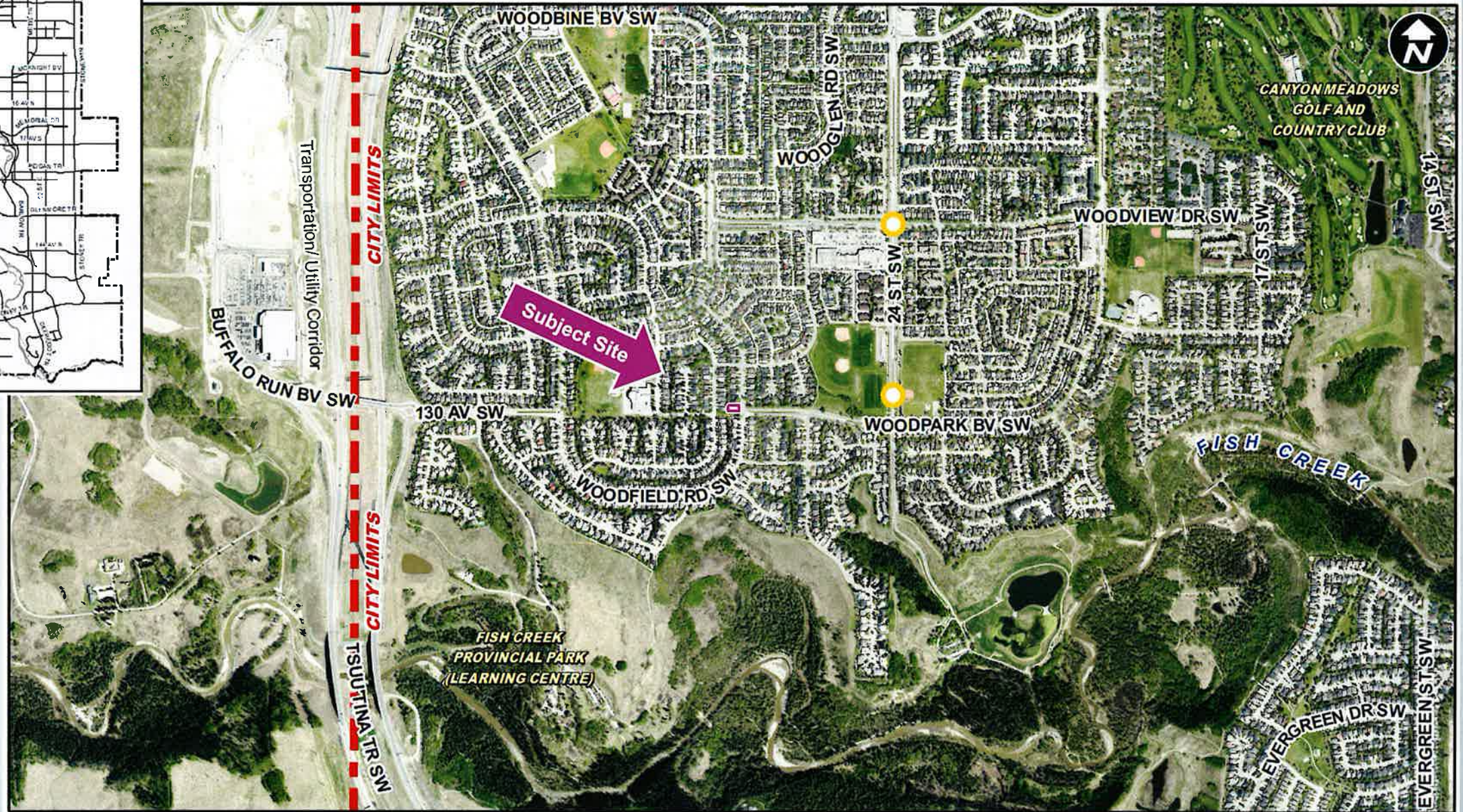
LOC2021-0206 / CPC2022-0034
Land Use Amendment
February 10, 2022

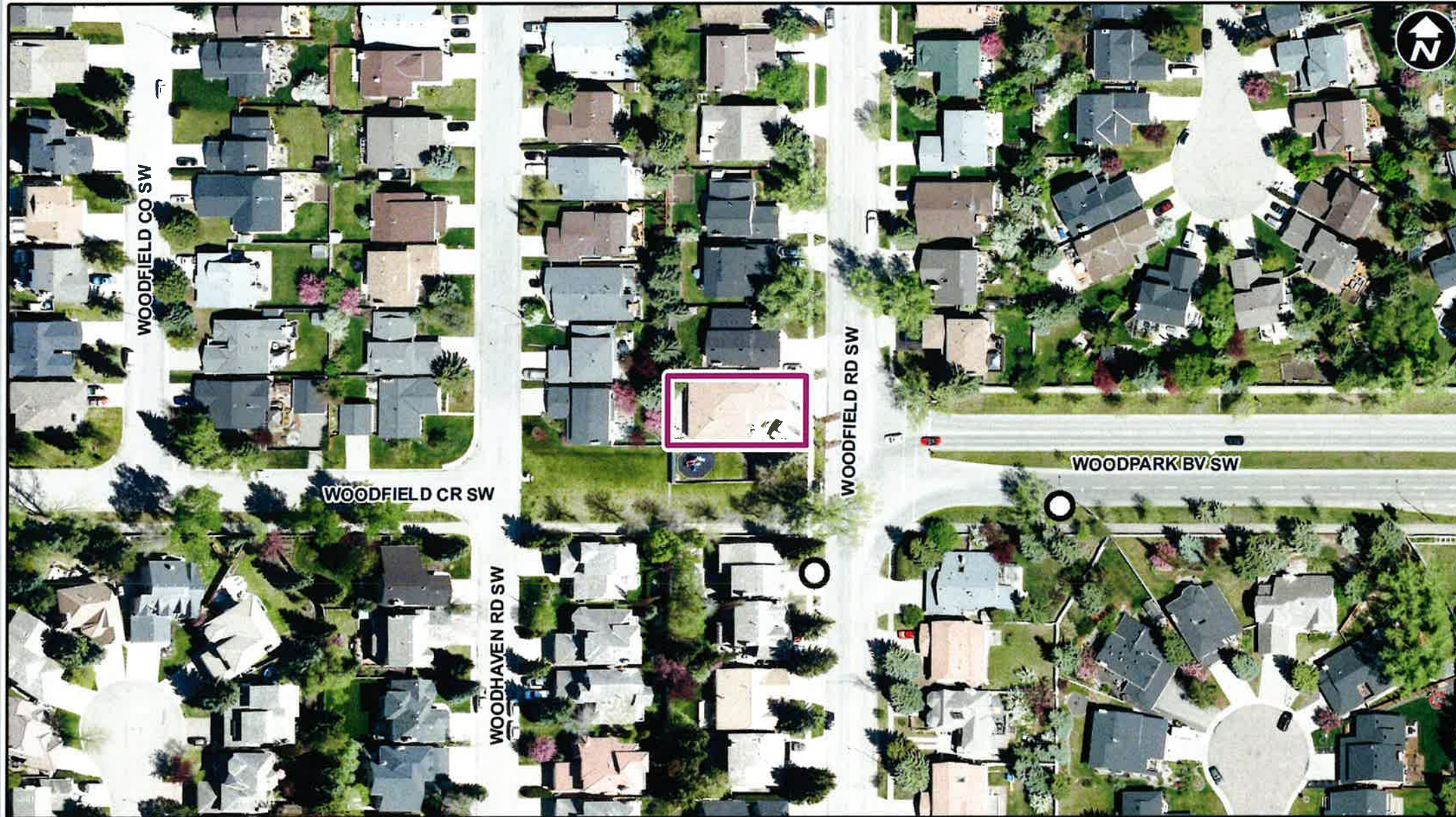


LEGEND

Max BRT Stops

- Orange
- Purple
- Teal
- Yellow



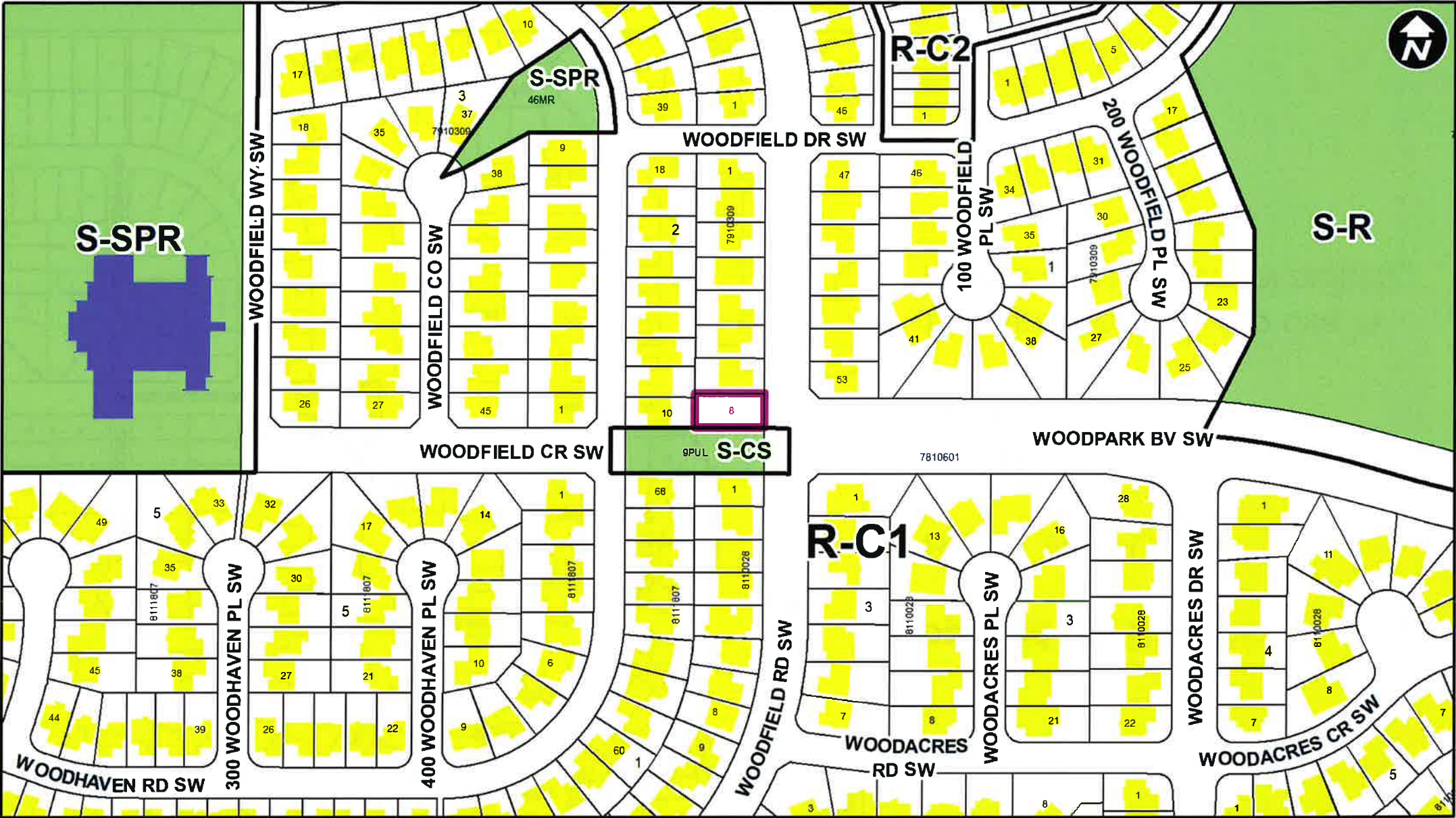


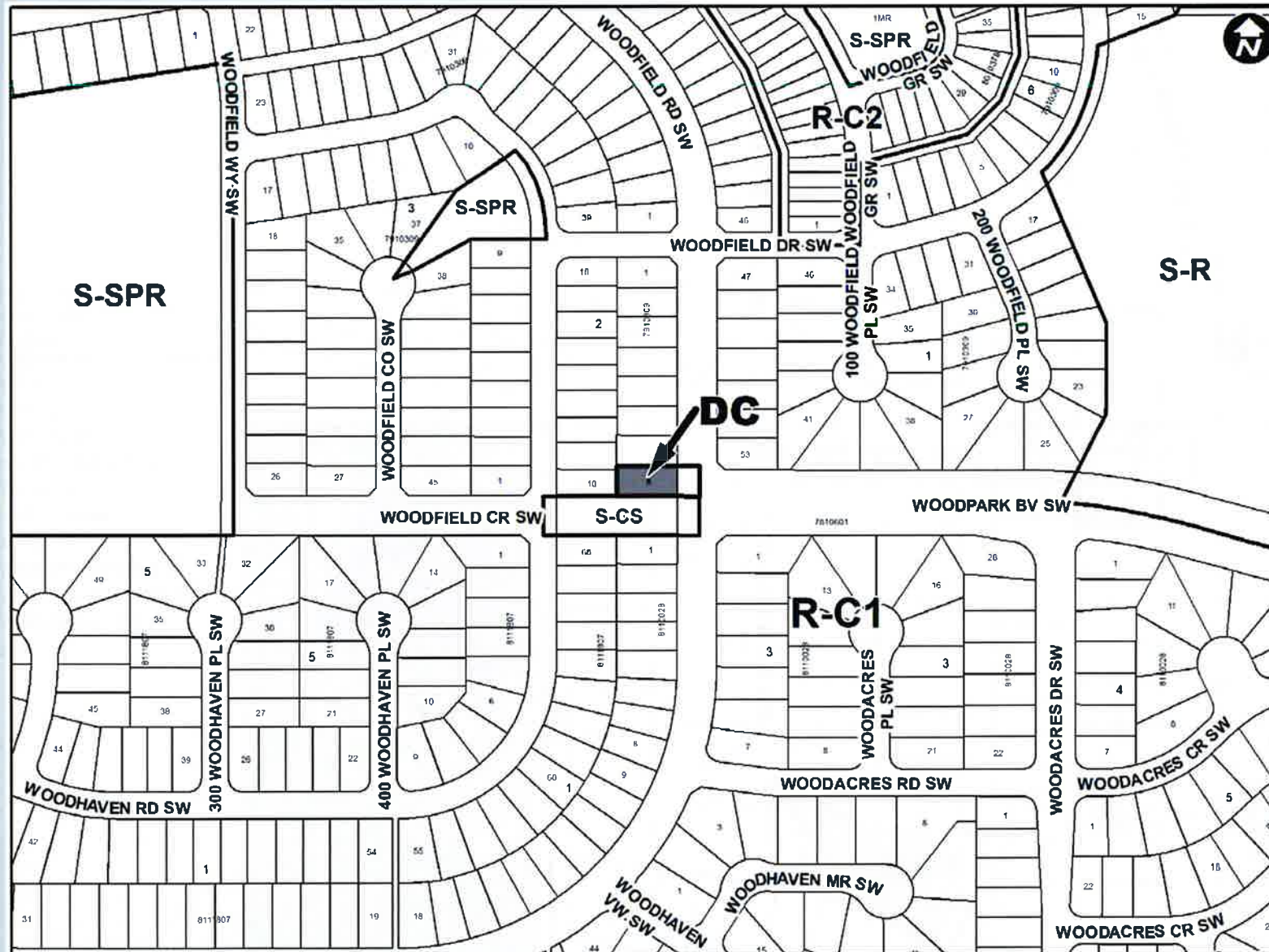
LEGEND
 ○ Bus Stop

Parcel Size:

**0.06 ha
 16m x 34m**







Proposed DC District:

- Based on R-C1
- Additional use of Child Care Service
- Required to allow the use in an existing residential building

| Location Criteria | Y/N |
|---|-----|
| Close to activity-focused areas (i.e. schools, parks) | Y |
| Site with sufficient parking for staff and parents | Y |
| Site with outdoor play area | N |
| On collector and other major streets | Y |
| On corner parcel to aid in pick-up / drop-off | N |
| No other child-care services on same block | Y |

RECOMMENDATION:

That Calgary Planning Commission recommend that Council:

Give three readings to the proposed bylaw for the redesignation of 0.06 hectares \pm (0.14 acres \pm) located at 308 Woodfield Road SW (Plan 7910309, Block 2, Lot 8) from Residential – Contextual One Dwelling (R-C1) District to Direct Control (DC) District to allow the additional discretionary use of Child Care Service, with guidelines (Attachment 2).