

BYLAW NUMBER 191D2015

**BEING A BYLAW OF THE CITY OF CALGARY
TO AMEND THE LAND USE BYLAW 1P2007
(LAND USE AMENDMENT LOC2015-0084)**

WHEREAS it is desirable to amend the Land Use Bylaw Number 1P2007 to change the land use designation of certain lands within the City of Calgary;

AND WHEREAS Council has held a public hearing as required by Section 692 of the Municipal Government Act, R.S.A. 2000, c.M-26 as amended;

NOW, THEREFORE, THE COUNCIL OF THE CITY OF CALGARY ENACTS AS FOLLOWS:

1. The Land Use Bylaw, being Bylaw 1P2007 of the City of Calgary, is hereby amended by deleting that portion of the Land Use District Map shown as shaded on Schedule "A" to this Bylaw and substituting therefor that portion of the Land Use District Map shown as shaded on Schedule "B" to this Bylaw, including any land use designation, or specific land uses and development guidelines contained in the said Schedule "B".
2. This Bylaw comes into force on the date it is passed.

READ A FIRST TIME THIS ____ DAY OF _____, 2015.

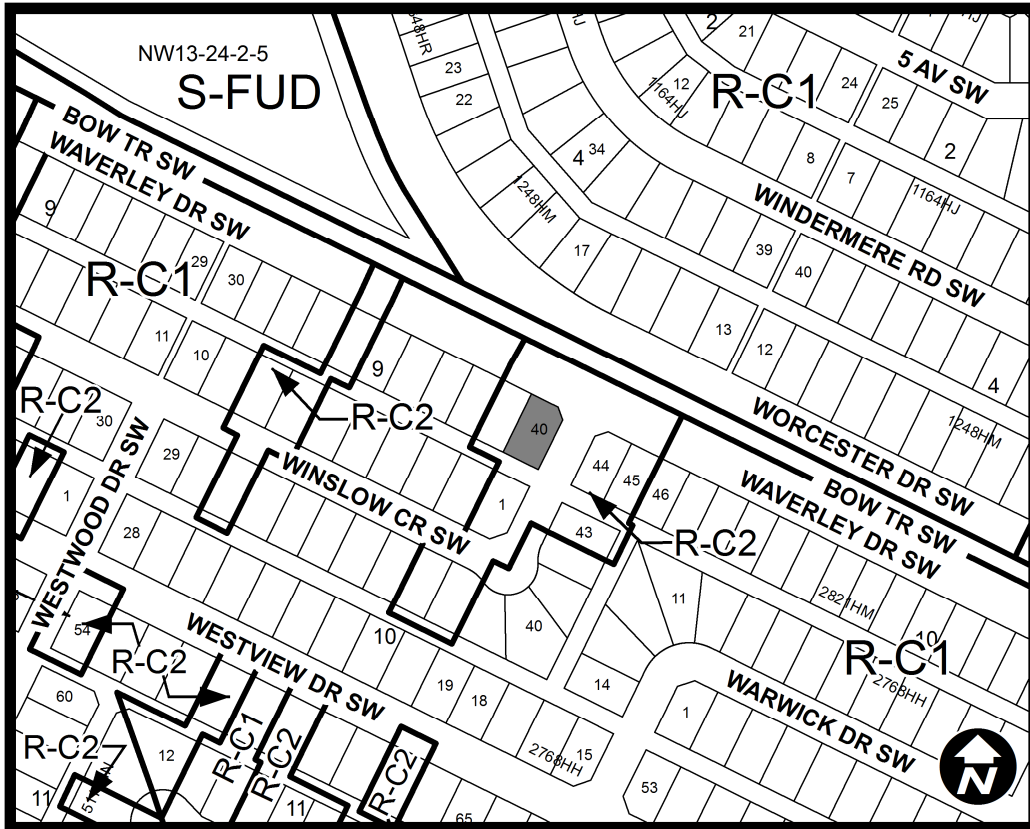
READ A SECOND TIME THIS ____ DAY OF _____, 2015.

READ A THIRD TIME THIS ____ DAY OF _____, 2015.

MAYOR
SIGNED THIS ____ DAY OF _____, 2015.

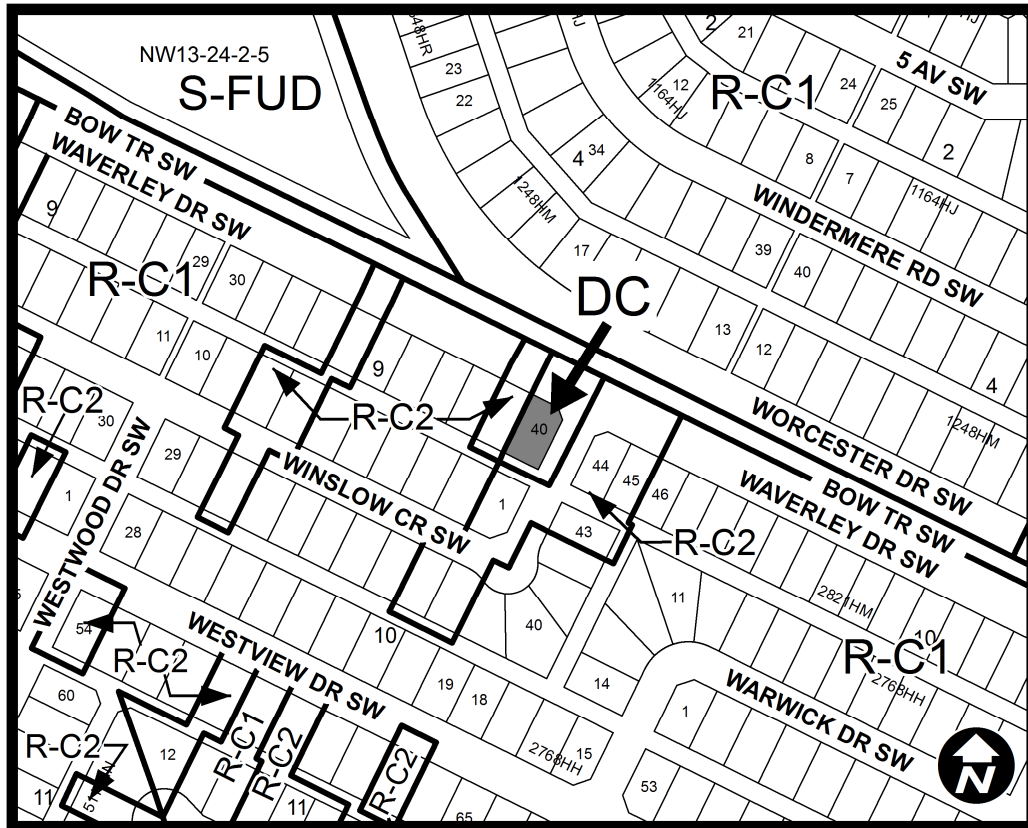
CITY CLERK
SIGNED THIS ____ DAY OF _____, 2015.

SCHEDULE A



PROPOSED

SCHEDULE B



DC DIRECT CONTROL DISTRICT

The Purpose

1 This Direct Control District is intended to:

- (a) accommodate a **Medical Clinic** within an existing **Semi-detached Dwelling**.

Compliance with Bylaw 1P2007

2 Unless otherwise specified, the rules and provisions of Parts 1, 2, 3 and 4 of Bylaw 1P2007 apply to this Direct Control District.

PROPOSED

Reference to Bylaw 1P2007

- 3 Within this Direct Control District, a reference to a section of Bylaw 1P2007 is deemed to be a reference to the section as amended from time to time.

Permitted Uses

- 4 The **permitted uses** of the Residential – Contextual One / Two Dwelling (R-C2) District of Bylaw 1P2007 are the **permitted uses** in this Direct Control District.

Discretionary Uses

- 5 (1) The **discretionary uses** of the Residential – Contextual One / Two (R-C2) District of Bylaw 1P2007 are the **discretionary uses** in this Direct Control District.
- (2) The following **use** is a **discretionary use** in this Direct Control District if it is located within the **building** existing on the **parcel** at the time of adoption of this Direct Control bylaw:
- (a) **Medical Clinic.**

Bylaw 1P2007 District Rules

- 6 Unless otherwise specified, the rules of the Residential – Contextual One / Two Dwelling (R-C2) District of Bylaw 1P2007 apply in this Direct Control District.

Use Area

- 7 The maximum cumulative **gross usable floor area** for **Medical Clinic** in this Direct Control District is 90.0 square metres.