

PROPOSED

IP2021-1506
ATTACHMENT 3

BYLAW NUMBER 68M2021

BEING A BYLAW OF THE CITY OF CALGARY TO DESIGNATE RILEY PARK AS A MUNICIPAL HISTORIC RESOURCE

WHEREAS the *Historical Resources Act*, R.S.A. 2000 c. H-9, as amended (the “Act”) permits the Council of The City of Calgary to designate real property as a Municipal Historic Resource whose preservation the Council considers to be in the public interest because of their heritage value;

AND WHEREAS the Owner(s) of Riley Park has been given sixty (60) days written notice of the intention to pass this Bylaw in accordance with the *Act*;

NOW, THEREFORE, THE COUNCIL OF THE CITY OF CALGARY ENACTS AS FOLLOWS:

SHORT TITLE

1. This Bylaw may be cited as “City of Calgary Bylaw to Designate Riley Park as a Municipal Historic Resource”.

BUILDING AND LAND DESIGNATED AS A MUNICIPAL HISTORIC RESOURCE

2. “Riley Park” comprises:
 - a) 82,379.64 square-meters (20.35 acres) more or less, of land which comprises the parcel; and
 - b) Is located at 800 12 ST NW as shown on attached Schedule “A” and legally described as:

MERIDIAN 5 RANGE 1 TOWNSHIP 24
SECTION 21

THAT PORTION OF THE SOUTH WEST QUARTER DESCRIBED AS FOLLOWS:
COMMENCING AT THE INTERSECTION OF THE NORTHERLY LIMIT OF THE LANE LYING NORTH OF BLOCKS "R", "S" AND "T" AS SAID LANE AND BLOCKS ARE SHOWN ON PLAN 5609J WITH THE WESTERLY LIMIT OF MORLEYVILLE ROAD AS SAID ROAD IS SHOWN ON THE SAID PLAN THENCE WESTERLY ALONG THE SAID NORTHERN LIMIT OF SAID LANE 1261.5 FEET MORE OR LESS TO THE INTERSECTION OF THE NORTHERLY LIMIT OF SAID LANE WITH THE EASTERLY LIMIT OF OXFORD STREET AS SAID STREET IS SHOWN ON SAID PLAN THENCE NORTHERLY ALONG SAID EASTERLY LIMIT OF OXFORD STREET AND ITS PRODUCTION NORTH THEREOF 705.5 FEET MORE OR LESS TO A POINT DISTANT 66 FEET SOUTH FROM THE BOUNDARY LINE BETWEEN THE NORTH AND SOUTH HALVES OF SAID SECTION 21 THENCE EASTERLY PARALLEL WITH SAID BOUNDARY LINE, 1262.2 FEET MORE OR LESS TO THE WESTERLY LIMIT OF THE SAID MORLEYVILLE ROAD THENCE SOUTHERLY ALONG SAID WESTERLY LIMIT 699.6 FEET MORE OR LESS TO THE POINT OF

PROPOSED

BYLAW NUMBER 68M2021

COMMENCEMENT CONTAINING 8.215 HECTARES (20.3 ACRES) MORE OR LESS TO THE POINT OF COMMENCEMENT EXCEPTING THEREOUT ALL MINES AND MINERALS AND THE RIGHT TO WORK THE SAME

3. "Riley Park" is designated as a Municipal Historic Resource as defined in the *Act*.
4. The heritage value of Riley Park is described in the attached Schedule "B".
5. The specific elements of Riley Park possessing heritage value are identified as the "character defining elements" in the attached Schedule "B". Those specific elements identified as "character defining elements" in the attached Schedule "B" are known as the Regulated Portions ("Regulated Portions").

PERMITTED REPAIRS AND REHABILITATION

6. a) The Regulated Portions of Riley Park shall not be removed, destroyed, disturbed, altered, rehabilitated, repaired or otherwise permanently changed, other than routine preservation and maintenance work, without prior written approval from the City of Calgary Council, or the heritage planner appointed by the City of Calgary Council as the Approving Authority for the purposes of administration of Section 26 of the *Act*. Any alteration, rehabilitation, repair or change to the Regulated Portions must be in accordance with the terms of the Parks Canada 2010 publication Standards and Guidelines for the Conservation of Historic Places in Canada, ("*Standards and Guidelines*"), as referenced and summarized in the attached Schedule "C".

b) All portions of Riley Park which are not specifically described or identified as a Regulated Portion are hereby known as the Non-Regulated Portions ("Non-Regulated Portions"). The Non-Regulated Portions are not subject to the *Standards and Guidelines* and may be rehabilitated, altered or repaired, provided that such rehabilitation, alteration or repair does not negatively impact the Regulated Portions, and that all the other permits required to do such work have been obtained.

COMPENSATION

7. No compensation pursuant to Section 28 of the *Act* is owing.

EXECUTION OF DOCUMENTS

8. Any employees of The City of Calgary who exercise land use and heritage planning powers and duties are hereby authorized to execute such documents as may be necessary to give effect to this Bylaw.

PROPOSED

BYLAW NUMBER 68M2021

SCHEDULES

9. The schedules to this Bylaw form a part of it.
10. This Bylaw comes into force on the day it was passed.

READ A FIRST TIME ON _____

READ A SECOND TIME ON _____

READ A THIRD TIME ON _____

MAYOR

SIGNED ON _____

CITY CLERK

SIGNED ON _____

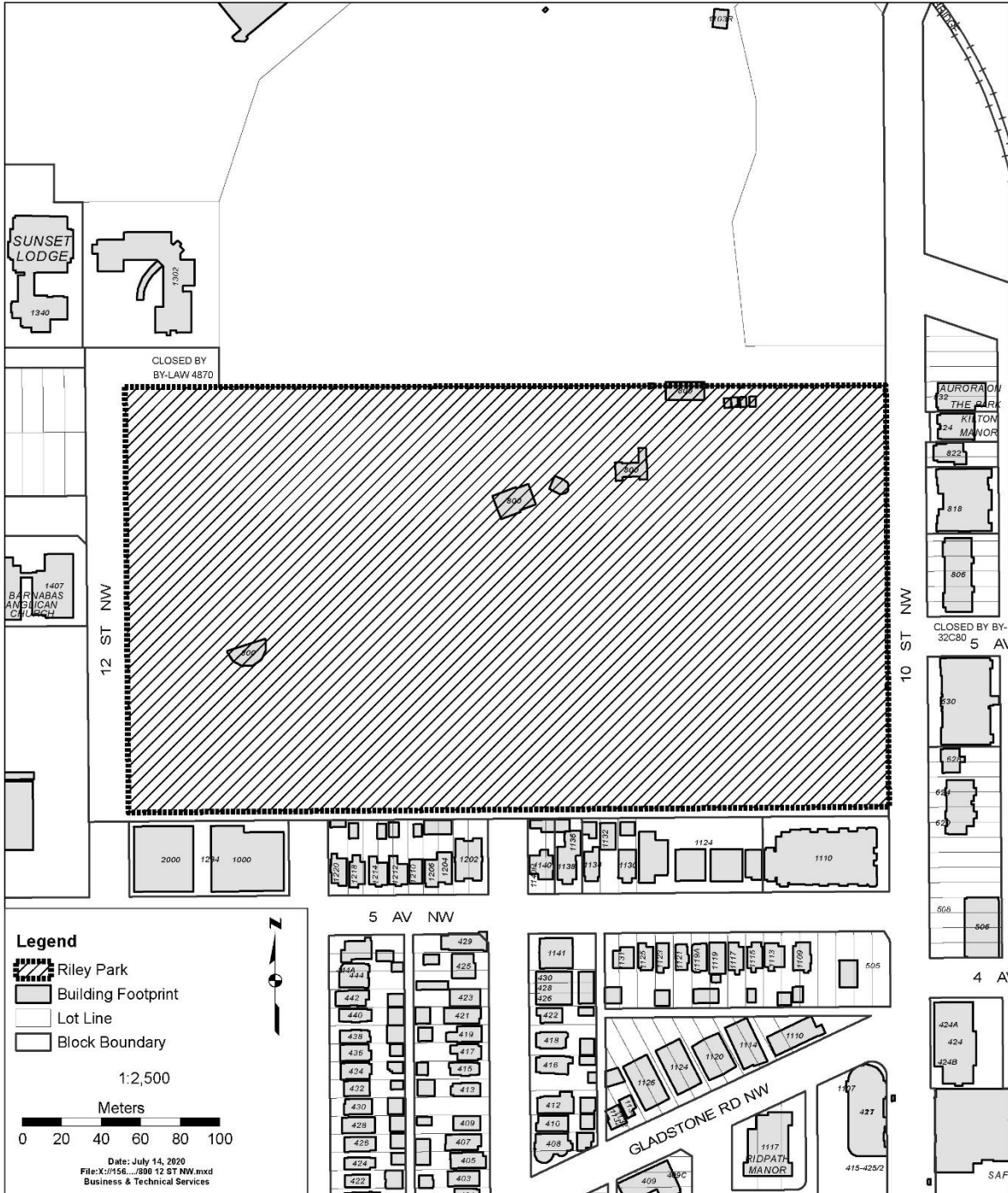
PROPOSED

BYLAW NUMBER 68M2021

SCHEDULE "A"



800 12 ST NW



PROPOSED

BYLAW NUMBER 68M2021

SCHEDULE "B"

Description

Riley Park is a large 8.23 ha (20.35 acres) Park in the community of Hillhurst. The park dates from 1911 and is comprised of an ornamental area along 10th Street NW, a wading pool, a large informal curved pathway, and a variety of recreational areas, including cricket pitches.

Heritage Value

The Heritage value lies in the association with Ezra Riley and William Reader; the planting design in the park, and the recreational activities available in the park.

Ezra Riley was a prominent figure in Calgary's early history. Ezra came to Alberta in 1888 to homestead a quarter section of land with his family. By the early 1900's the Riley Family had over 10,000 acres. Riley was a member of the legislative Assembly of Alberta for the Conservative Party from 1906-1910. In 1910 Ezra Riley subdivided the family land and created the community of Hillhurst. Riley donated part of the land to the City of Calgary to create the park that now bears his name.

William Roland Reader was Calgary's Superintendent of Parks and Cemeteries from 1913-1942. This was an important time in the development of Calgary as there was much migration and subsequent construction. Reader's goal was to develop Calgary into a destination of the west. His vision of Calgary was as a great city with high quality open space, including public parks, recreation facilities, and streets lined with trees and developed with landscaped areas, planted with ornamental shrubs and flowers. Riley Park was primarily designed and developed by Reader.

Reader's floral/planting design along 10th Street was influenced by the City Beautiful Movement in urban development/planning. The movement supported beautification, monumental grandeur, and formality to encourage order and harmony. Advocates of the movement believed the approach would promote a harmonious social order that would increase the quality of life and help to reduce undesirable behaviour.

Early in his career in Calgary William Reader adopted this approach to beautifying the city. The intent was to illustrate that Calgary was a city with high quality public spaces. He wanted to ensure Calgary was a City where individuals would like to migrate. Reader's work included showpieces such as the Riley Park floral display which incorporated colourful floral displays with vibrant mixtures of annuals and perennials.

The majority of the park design (excluding the 10th Street floral display) was influenced more by the picturesque movement where an emphasis was placed more on informal, natural in appearance, and curvilinear design elements; the natural shape of the wading pool, the curvilinear pathway, and the natural in appearance planting along the edges of the park reflect this approach.

The planting along the west, south and north edges of the park is typical of park design from the 1910's, 1920's and 30's. During the early development of Calgary (and into the 1940's) parks were thought of as refuges from the rest of the City. There were typically dense plantings around the edges of parks to keep the dust and noise out of the park, and people in the park. This approach is in marked contrast to the way parks are designed today. Contemporary park design includes an emphasis on inviting people into the park and having transparency from the

PROPOSED

BYLAW NUMBER 68M2021

street. The dense shrub and tree plantings on the three edges of Riley Park illustrate typical park design in the 1910's, 1920's, and 1930's.

The park is also significant for the wide variety of leisure activities. Leisure and recreational areas are important in the establishment of a city as they allow citizens opportunities to gather for leisure and social engagement. Play structures were erected as early as 1912. The wading pond began construction in 1913; 1914 included a substantial toboggan run; 1917 a playground shelter. In 1919 three cricket pitches were developed along with a clubhouse (although it is noted that The Calgary and District Cricket League began playing in Riley Park prior to that). Specific Cricket tournaments worth noting include the 1922 Interprovincial Cricket Tournament, 1961 Canadian National Cricket Tournament, 1965 International Cricket Match – Canada vs. the United States.

Character-defining Elements

Key elements that define the heritage character include:

- The existing 8.23 ha (20.35 acres) park land that is rectangular in shape;
- The formal geometric floral display along the 10th Street edge;
- The informal, natural in appearance, edge plantings along the west, north and south edges of the park;
- The wading pool location;
- The cricket pitches;
- The curvilinear pathway pattern; and
- 1949 ornamental gate at the 11th Street Entrance.

PROPOSED

BYLAW NUMBER 68M2021

SCHEDULE "C"

The primary purpose of the *Standards and Guidelines* is to provide guidance to achieve sound conservation practice. They are used to assess proposed changes to designated Municipal Historical Resources and form the basis for review and assessment for the approved rehabilitation program.

The *Standards and Guidelines* were developed by Parks Canada and were formally adopted by The City of Calgary in 2005. They provide a philosophical consistency for project work; and while neither technical nor case-specific, they provide the framework for making essential decisions about those features of a historic place, which should be maintained and cannot be altered.

The *Standards* listed below and the referenced *Guidelines* shall apply to the Regulated Portions and any rehabilitation or maintenance work undertaken with respect to them at any time.

The Standards

Definitions of the terms in italics below are set forth in the Introduction of the *Standards and Guidelines*. In the event of a conflict between the italicized terms below and those in the *Standards and Guidelines*, the latter shall take precedence. The Standards are not presented in a sequential or hierarchical order, and as such, equal consideration should be given to each. All Standards for any given type of treatment must therefore be applied simultaneously to a project.

General Standards (all projects)

1. Conserve the *heritage value* of a *historic place*. Do not remove, replace, or substantially alter its intact or repairable *character-defining elements*. Do not move a part of a *historic place* if its current location is a *character-defining element*.
2. Conserve changes to a *historic place* which, over time, have become *character-defining elements* in their own right.
3. Conserve *heritage value* by adopting an approach calling for *minimal intervention*.
4. Recognize each *historic place* as a physical record of its time, place and use. Do not create a false sense of historical development by adding elements from other *historic places* or other properties or by combining features of the same property that never coexisted.
5. Find a use for a *historic place* that requires minimal or no change to its *character defining elements*.
6. Protect and, if necessary, stabilize a *historic place* until any subsequent *intervention* is undertaken. Protect and preserve archaeological resources in place. Where there is potential for disturbance of archaeological resources, take mitigation measures to limit damage and loss of information.
7. Evaluate the existing condition of *character-defining elements* to determine the appropriate *intervention* needed. Use the gentlest means possible for any *intervention*. Respect *heritage value* when undertaking an *intervention*.
8. Maintain *character-defining elements* on an ongoing basis. Repair *character-defining elements* by reinforcing their materials using recognized conservation methods. Replace in

PROPOSED

BYLAW NUMBER 68M2021

kind any extensively deteriorated or missing parts of *character-defining elements*, where there are surviving prototypes.

9. Make any *intervention* needed to preserve *character-defining elements* physically and visually compatible and identifiable upon close inspection and document any *intervention* for future reference.

Additional Standards Relating to Rehabilitation

10. Repair rather than replace *character-defining elements*. Where *character-defining elements* are too severely deteriorated to repair, and where sufficient physical evidence exists, replace them with new elements that match the forms, materials and detailing of sound versions of the same elements. Where there is insufficient physical evidence, make the form, material and detailing of the new elements compatible with the character of the *historic place*.
11. Conserve the *heritage value* and *character-defining elements* when creating any new additions to a *historic place* or any related new construction. Make the new work physically and visually compatible with, subordinate to and distinguishable from the *historic place*.
12. Create any new additions or related new construction so that the essential form and integrity of a *historic place* will not be impaired if the new work is removed in the future.

Additional Standards Relating to Restoration

13. Repair rather than replace *character-defining elements* from the restoration period. Where *character-defining elements* are too severely deteriorated to repair and where sufficient physical evidence exists, replace them with new elements that match the forms, materials and detailing of sound versions of the same elements.
14. Replace missing features from the restoration period with new features whose forms, materials and detailing are based on sufficient physical, documentary and/or oral evidence.

Guidelines

The full text of the *Standards and Guidelines* is available online through www.historicplaces.ca, or from:

Parks Canada National Office
25 Eddy Street
Gatineau QC, K1A 0M5