

The word "Calgary" in white sans-serif font on a red rectangular background.A wide-angle photograph of a modern bridge with a distinctive red, curved metal structure. The bridge spans a river, with a city skyline visible in the background under a dramatic, cloudy sky. The foreground shows the bridge's walkway and railing.

Council Community Fund Application

Silver Spring Community Association

Facility Addition Project

Ward Sutherland
Councillor, Ward 1

PFC2021-1237
ISC: Unrestricted

Indoor Programs & Services



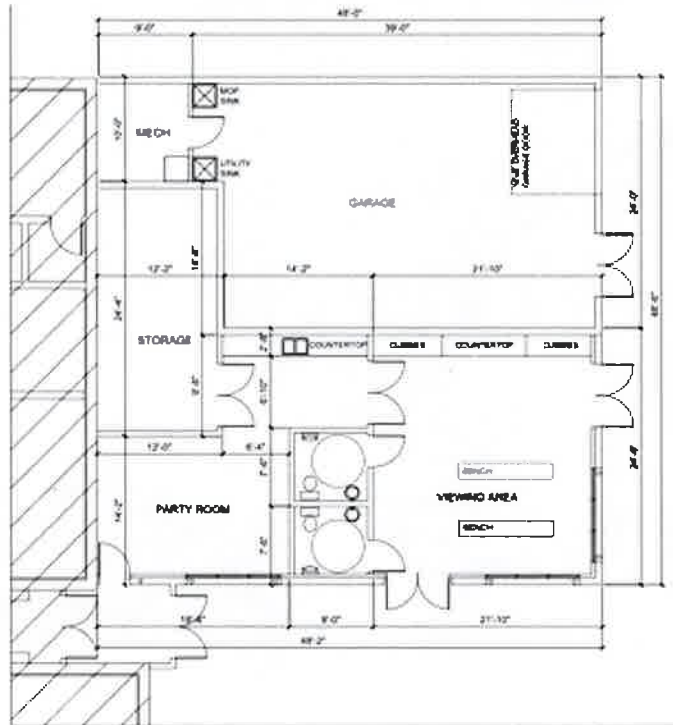


Outdoor Programs, Services, & Amenities

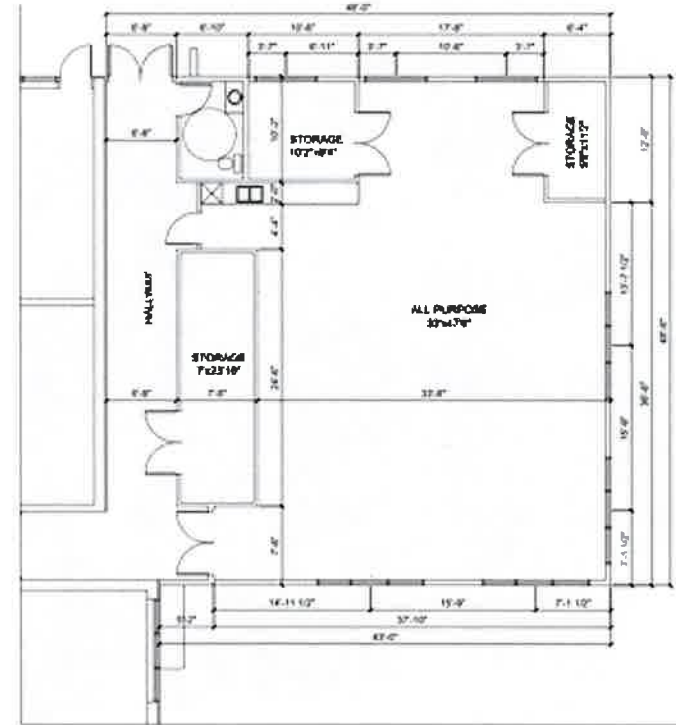




New Addition: Lower & Upper Floor Plan



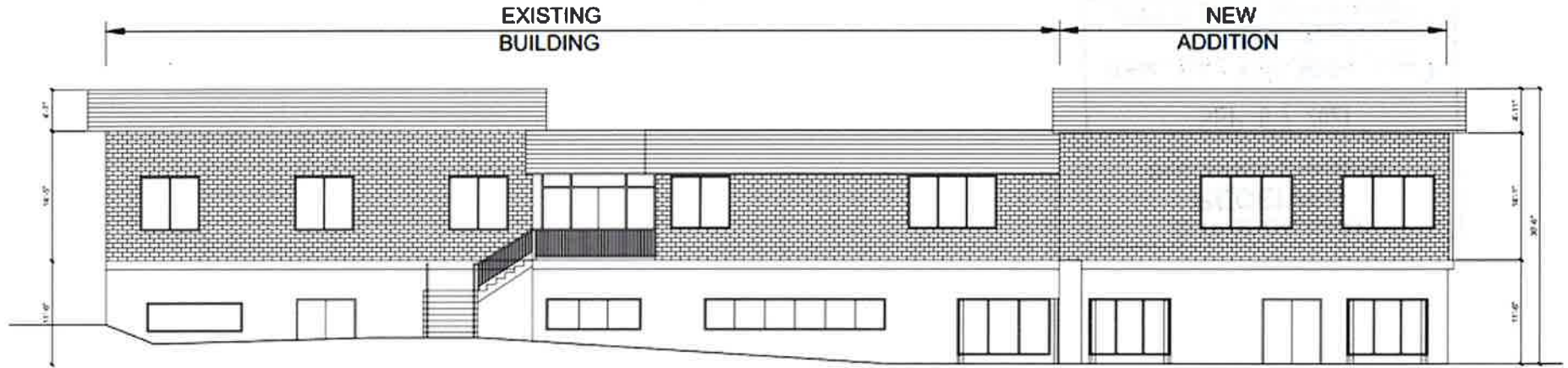
MAIN FLOOR PLAN



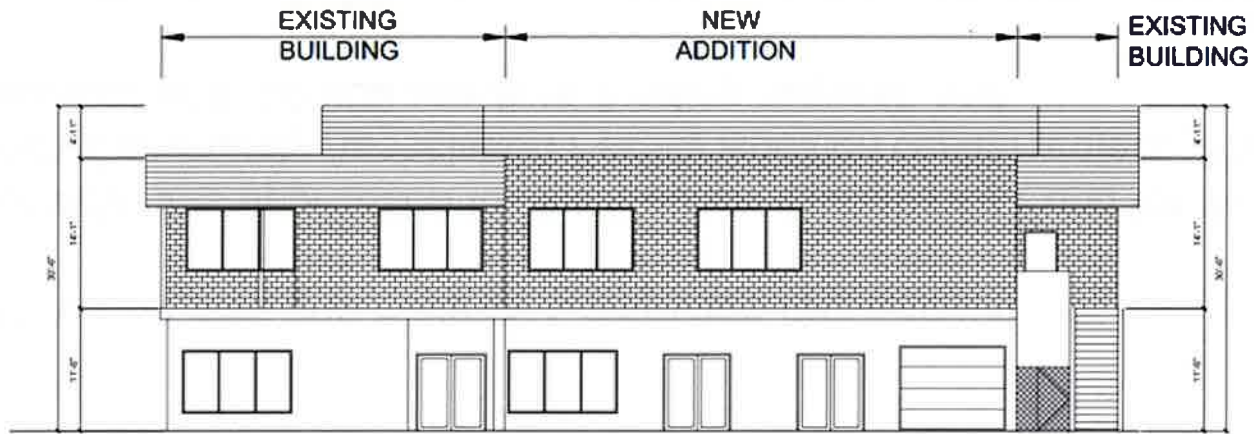
UPPER FLOOR PLAN



Building Concept



SOUTH ELEVATION



EAST ELEVATION



RECOMMENDATIONS:

That the Priorities and Finance Committee recommend that Council:

1. Consider this application for the Council Community Fund for the Silver Springs Community Association Facility Addition capital project (Phase 1), in the amount of \$300,000 one-time funding request; and,
2. Direct the Ward 1 Office and the applicant to report back to the Priorities and Finance Committee within 12 months of project completion.

