

Calgary



Come In
WE'RE
OPEN

Business Support Program

June 2021

Supporting Calgary's Businesses

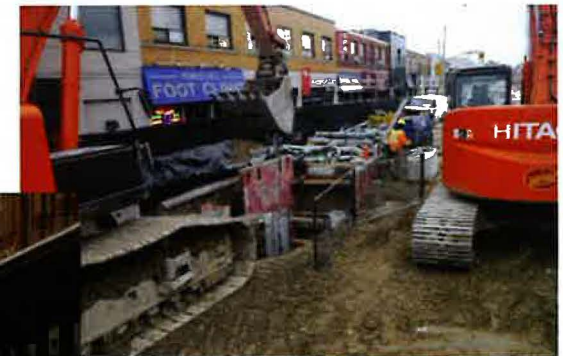
Why is this important? Construction will be disruptive for Calgarians, for businesses and for communities along the Green Line alignment.



Canada Line, Vancouver



West LRT, Calgary



Eglinton LRT, Toronto



Sydney, Australia

Green Line's approach has been informed by businesses who have experienced construction impacts

- Lessons learned and project close out reviews
- Targeted interviews and commissioned research
- Business Insights Panel engagement
- Consultation with impacted businesses (Enabling Works)
- Student projects

Green Line Initiatives

Green Line's Business Support Program:



Access + construction
management

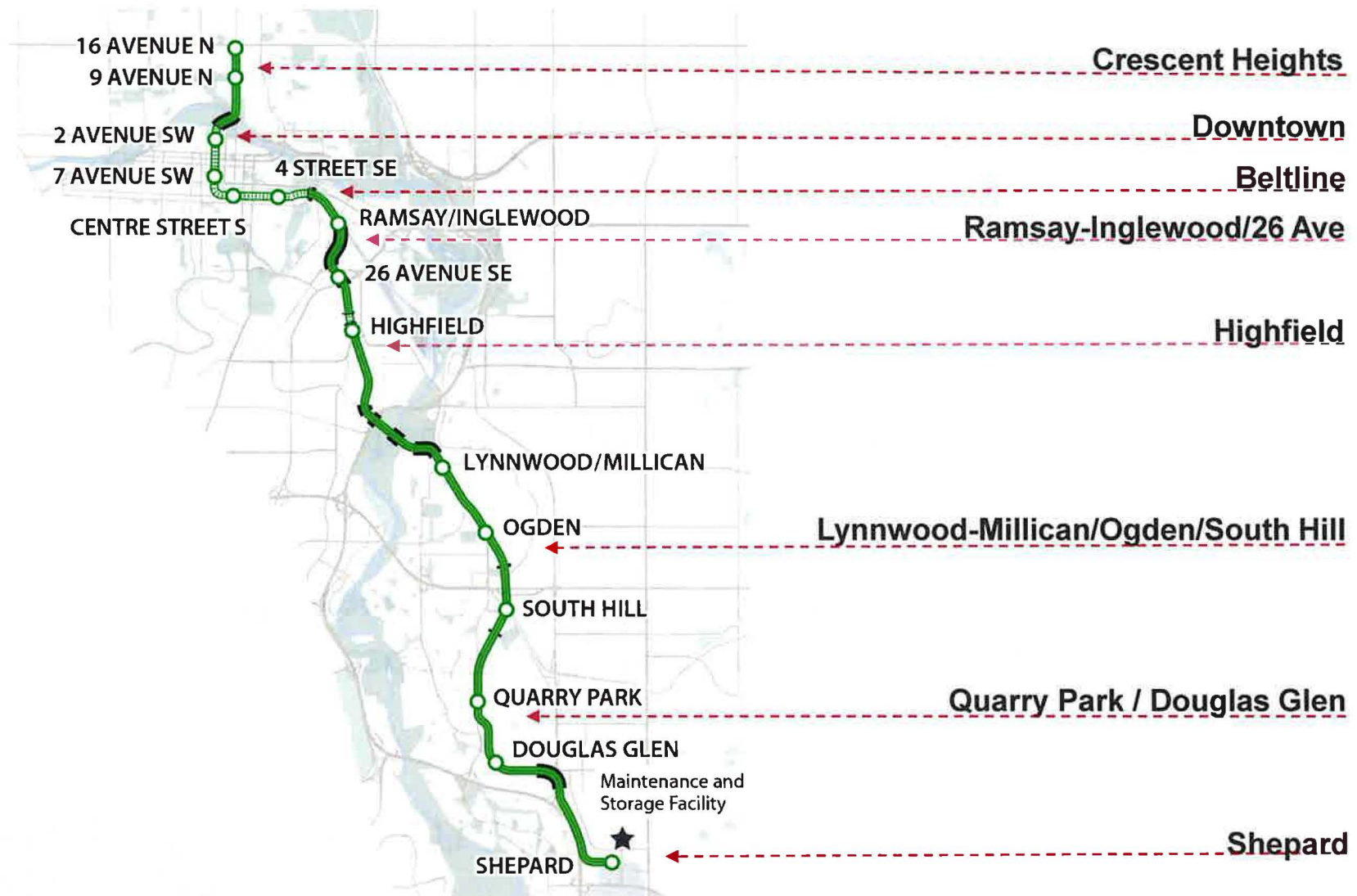


Business capacity building



Marketing + promotion

Green Line Businesses & Communities





Green Line Commitment

To help impacted stakeholders to prepare for and manage the impacts of Green Line LRT construction

- Be honest and set clear expectations for construction impacts
- Plan early so stakeholders are prepared
- Establish relationships and stay connected
- Be responsive to issues and inquiries
- Implement and sustain initiatives so stakeholders feel supported
- Leverage partnerships for greater impact

Next Steps

- **Green Line Business Database for Phase 1**
(database registration and business operations info)
- **Pre-construction planning & potential initiatives**
(Utility Relocation Project - Beltline and Downtown)