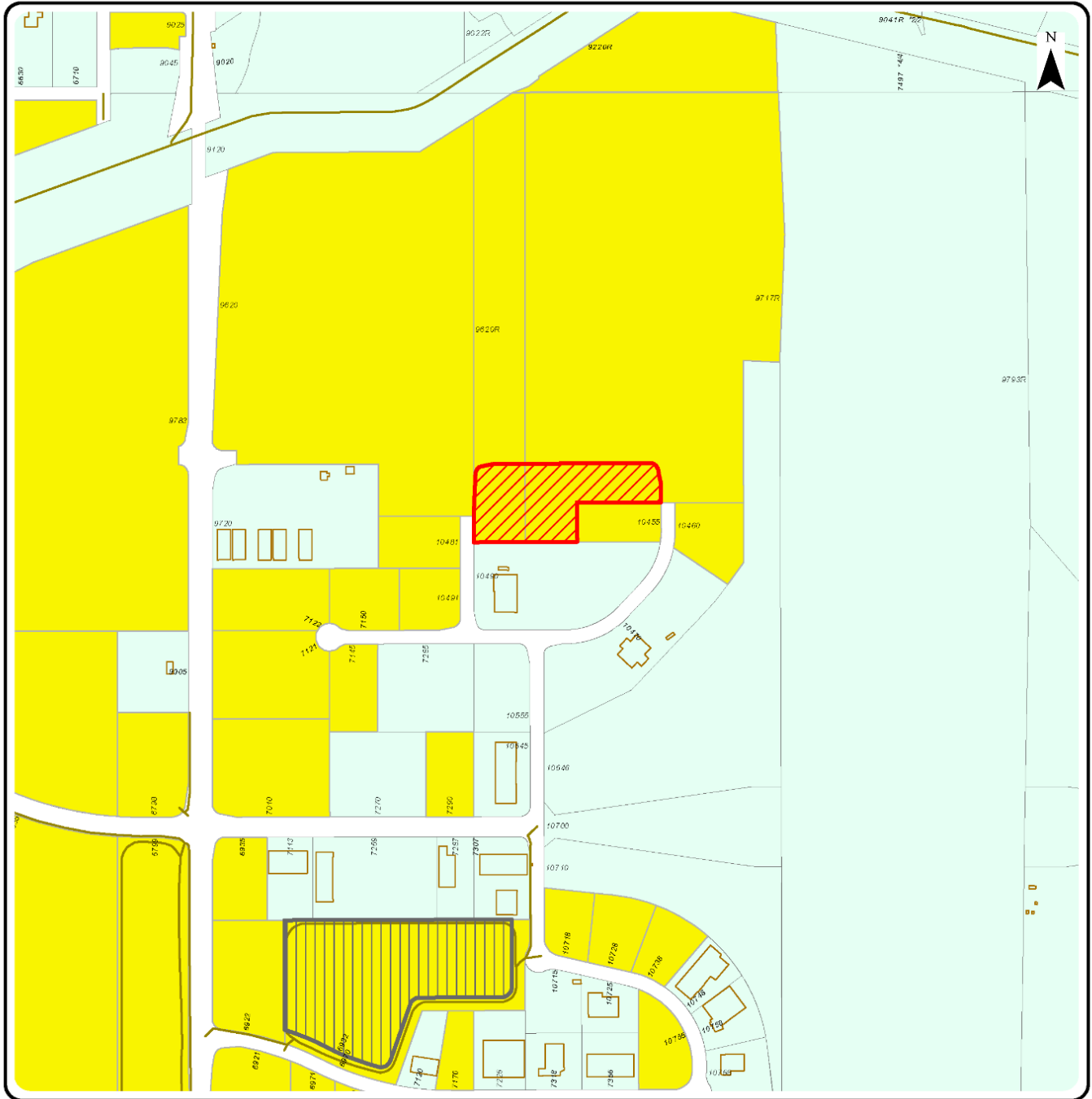





SITE MAP – RECOMMENDATION (3)



ptn. 9620R 68 ST SE, ptn. 9717R 84 ST & SE 6932 107 AV SE

-  ptn. 9620R 68 ST SE & ptn. 9717R 84 ST SE  
± 2.527 ha ( ± 6.25 ac)
-  6932 107 AV SE  
± 5.379 ha ( ± 13.29 ac)
-  City Owned Land