

We work 24/7 to keep you moving

When it snows, we have a plan

Once a snowfall ends, the Council-approved seven-day snow plan comes into effect city-wide.

The plan sets out which roads, sidewalks, bikeways and pathways our crews will clear, to what extent, and on which day. While it's still snowing, and before the plan is activated, crews are out on major roads plowing snow to prevent build-up and applying anti-icing material.

Over 16,000 lane kilometres



Did you know? This would be equivalent to driving back and forth between Calgary and Edmonton 54 times.

Average annual snowfall in Calgary is 130 cm.

Keeping our sidewalks and pathways clear

Property owners are required to clear adjacent sidewalks within 24 hours of snowfall ending, or risk being fined up to \$750.



Did you know? There are over 5,500 kilometres of sidewalks in Calgary. The City is responsible for clearing 11% of these sidewalks.

Day 1

OF SEVEN-DAY PLAN

Completed within 24 hrs.

4,048 lane km (25% of all roads)

477 km of pathways

617 km of sidewalks

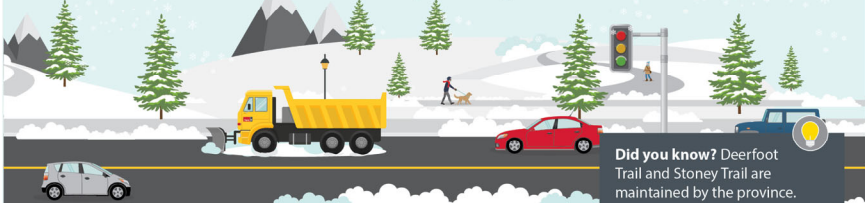
Major roads are Priority 1

City Crews work during snowfall and 24 hours after snowfall ends, plowing and removing snow on Priority 1 routes.

- Major roads plowed to bare pavement include: Crowchild Trail, Memorial Drive and Macleod Trail
- Downtown
- Pedestrian overpasses
- LRT platforms
- Downtown cycle tracks
- Designated sections of pathways and sidewalks along City-owned properties

Equipment/staff for a typical snowfall:

- 100–120 pieces of heavy equipment working daily
- 1,000–1,200 total hours
- 330 staff working 24/7 through the winter



20,000 vehicles per day

Did you know? Deerfoot Trail and Stoney Trail are maintained by the province.

Day 2

OF SEVEN-DAY PLAN

Completed within 48 hrs.

3,211 lane km (20% of roads)

Did you know? Priority 2 routes are snow routes, and may be subject to a parking ban.

Priority 2 roads include bus routes

After 24 hours, Priority 2 roads are plowed.

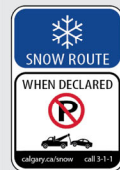
- Intersections and crosswalks controlled by traffic lights
- Emergency routes (e.g. hospitals and fire stations)
- Bus routes and roads with on-street bike lanes
- Includes roads such as Kensington Road and Acadia Drive.



5,000–19,999 vehicles per day

Snow Route Parking Ban:

during a ban, parking is temporarily restricted on designated snow routes for up to 72 hours.



Day 3-7

OF SEVEN-DAY PLAN

Priority 3 & 4 routes:

9,083 lane km (55% of roads)

Feeder, collector and residential streets

After 48 hours, Priority 3 plowing includes:

- Feeder/collector routes
- Turn lanes and on/off ramps
- Windrows at busy crosswalks and wheelchair curb ramps
- Playground zones
- Designated hills

After 72 hours, Priority 4 clearing includes:

- Designated residential streets
- Bus pads



Responsible clearing

The City follows a Council-approved Seven-Day snow plan, to maintain a safe network while being budget conscious.

Our snow plan does not include:

- Plowing residential roads down to bare pavement
- Snow removal from residential areas
- Clearing back lanes, alleyways



What we lay down

Keeping our roads clear and safe takes a lot of material.

In 2020 we used:

- Nearly 69,000 tonnes of salt
- Almost 21,500 tonnes of pickle (salt/gravel mix)
- Almost 170,000 litres of anti-icing agents

Did you know? Most of the gravel material we lay down is picked up during The City's Street Sweeping program in the spring.



What it costs when it snows

\$1.2 million is the cost to clear Calgary's roads

\$85,000–\$100,000 is the cost to clear Calgary's sidewalks

\$25,000–\$35,000 is the cost to clear Calgary's pathways



\$7 is the average monthly household cost for snow clearing on your property tax.