

Phase 4: Short-, medium-, and long-term preliminary concepts



Phase 4 - Concept Evaluation
Workshop Concept Scorecard

Review the concepts and evaluate how well each concept meets the 11 project goals:

1 = Does not meet goal; 2 = Meets goal somewhat; or 3 = Meets goal well.

Project team members are available at your table if you have any questions about the concepts or exercise.

Key Principle	Project Goal	Bow River Crossing (Short-Term Improvements)	
		Evaluation of: Bridge Widening	Comments
Key Principle #1: Maintain and Enhance Bordering Communities	Prioritize concepts that fit within existing City-owned lands over concepts that require purchasing private property.		
	Address how changes to Crowchild Trail affect traffic patterns and safety in bordering communities.		
	Recommend current and visually-pleasing ways to reduce traffic noise along Crowchild Trail.		
	Enhance green spaces, park spaces and pathways along the Crowchild Trail corridor.		
Key Principle #2: Improve Travel Along the Corridor	Provide continuous pedestrian and cycling routes nearby, but not on, Crowchild Trail to connect major destinations along the corridor.		
	Provide for convenient, high capacity, high frequency bus service along Crowchild Trail.		
	Enhance the Crowchild Trail corridor to better fulfill its role as a primary route for delivery of emergency response and health services, and for connecting to major destinations.		
	Provide for more continuous traffic flow on Crowchild Trail that addresses bottleneck points and traffic weaving.		
Key Principle #3: Improve Mobility Across the Corridor	Enhance the safety and accessibility of transit stops throughout the Crowchild Trail corridor.		
	Enhance pedestrian and cycling access across Crowchild Trail, both in the number and quality of crossings.		
	Ensure alternate access is provided for bordering communities and businesses if access to Crowchild Trail is removed or changed.		
Project Team Evaluation: City Policy	Support community redevelopment by aligning the Crowchild Trail corridor with community planning policies including the Municipal Development Plan, Area Redevelopment Plans, and the Main Streets initiative.	3	Upgrades to the Bow River Bridge support anticipated growth from approved developments along the Crowchild Tr. corridor such as Currie Barracks, West Campus, and the Foothills Hospital Cancer Centre.
	Support Crowchild Trail's role in the Calgary Transportation Plan as a critical network connection between north and south Calgary, and a vital link to east-west routes.	3	Upgrades to the Bow River Bridge improve flow at a key bottleneck point by addressing lane continuity and improves east-west connections from Bow Tr. to Memorial Dr. by relocating on-ramps to the right-hand side of the bridge.

Description of Evaluation

- 1 Does not meet goal
- 2 Meets goal somewhat
- 3 Meets goal well

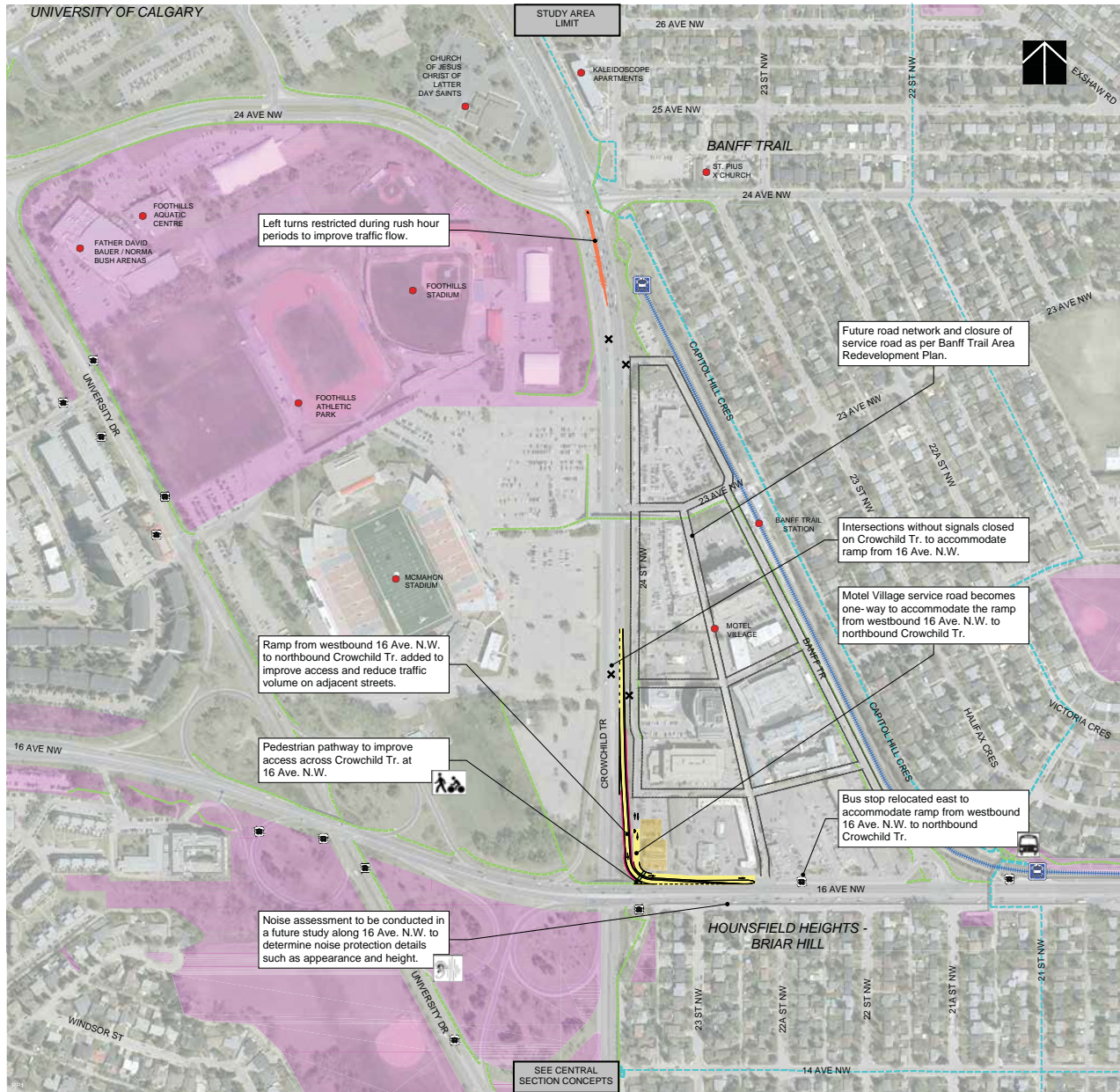
calgary.ca | contact 311

Crowchild Trail Study

Phase 4: Short-, medium-, and long-term preliminary concepts



Optimization between 16 Ave. N.W. and 24 Ave. N.W. Short-Medium Term Improvements



Legend

- | | | | | |
|-----------------|----------------------|-------------------------------|---------------------------------------|---------------------------------|
| Proposed road | Road closures | Proposed pathway/sidewalk | Potential property impacts - Building | Proposed bus stop |
| Proposed bridge | Lane count/direction | Proposed pedestrian bridge | Potential property impacts - Grading | Existing LRT |
| Traffic signal | Proposed wall | Proposed bike route | City owned property | Pedestrian / bike opportunities |
| | | Existing pathway / sidewalk | Proposed park space | Parks opportunities |
| | | Existing pedestrian bridge | Community places of interest | Noise protection opportunities |
| | | Existing on street bike route | | |

calgary.ca | contact 311

Crowchild Trail Study

Phase 4: Short-, medium-, and long-term preliminary concepts



Phase 4 - Concept Evaluation Workshop Concept Scorecard

Review the concepts and evaluate how well each concept meets the 11 project goals:

1 = Does not meet goal; 2 = Meets goal somewhat; or 3 = Meets goal well.

Project team members are available at your table if you have any questions about the concepts or exercise.

Key Principle	Project Goal	Optimization between 16 Ave. N.W. and 24 Ave. N.W. (Short-Medium Term Improvements)	
		Evaluation of: Optimization	Comments
Key Principle #1: Maintain and Enhance Bordering Communities	Prioritize concepts that fit within existing City-owned lands over concepts that require purchasing private property.		
	Address how changes to Crowchild Trail affect traffic patterns and safety in bordering communities.		
	Recommend current and visually-pleasing ways to reduce traffic noise along Crowchild Trail.		
	Enhance green spaces, park spaces and pathways along the Crowchild Trail corridor.		
Key Principle #2: Improve Travel Along the Corridor	Provide continuous pedestrian and cycling routes nearby, but not on, Crowchild Trail to connect major destinations along the corridor.		
	Provide for convenient, high capacity, high frequency bus service along Crowchild Trail.		
	Enhance the Crowchild Trail corridor to better fulfill its role as a primary route for delivery of emergency response and health services, and for connecting to major destinations.		
	Provide for more continuous traffic flow on Crowchild Trail that addresses bottleneck points and traffic weaving.		
Key Principle #3: Improve Mobility Across the Corridor	Enhance the safety and accessibility of transit stops throughout the Crowchild Trail corridor.		
	Enhance pedestrian and cycling access across Crowchild Trail, both in the number and quality of crossings.		
	Ensure alternate access is provided for bordering communities and businesses if access to Crowchild Trail is removed or changed.		
Project Team Evaluation: City Policy	Support community redevelopment by aligning the Crowchild Trail corridor with community planning policies including the Municipal Development Plan, Area Redevelopment Plans, and the Main Streets initiative.	3	The new ramp from 16 Ave. N.W. to Crowchild Tr. is essential to support redevelopment of Motel Village under the Banff Trail Station Area Redevelopment Plan.
	Support Crowchild Trail's role in the Calgary Transportation Plan as a critical network connection between north and south Calgary, and a vital link to east-west routes.	3	The new ramp from 16 Ave. N.W. to Crowchild Tr. improves access between two important roads and reduces traffic volume on local streets such as Banff Tr. and 19 St. N.W.

Description of Evaluation



Does not meet goal



Meets goal somewhat

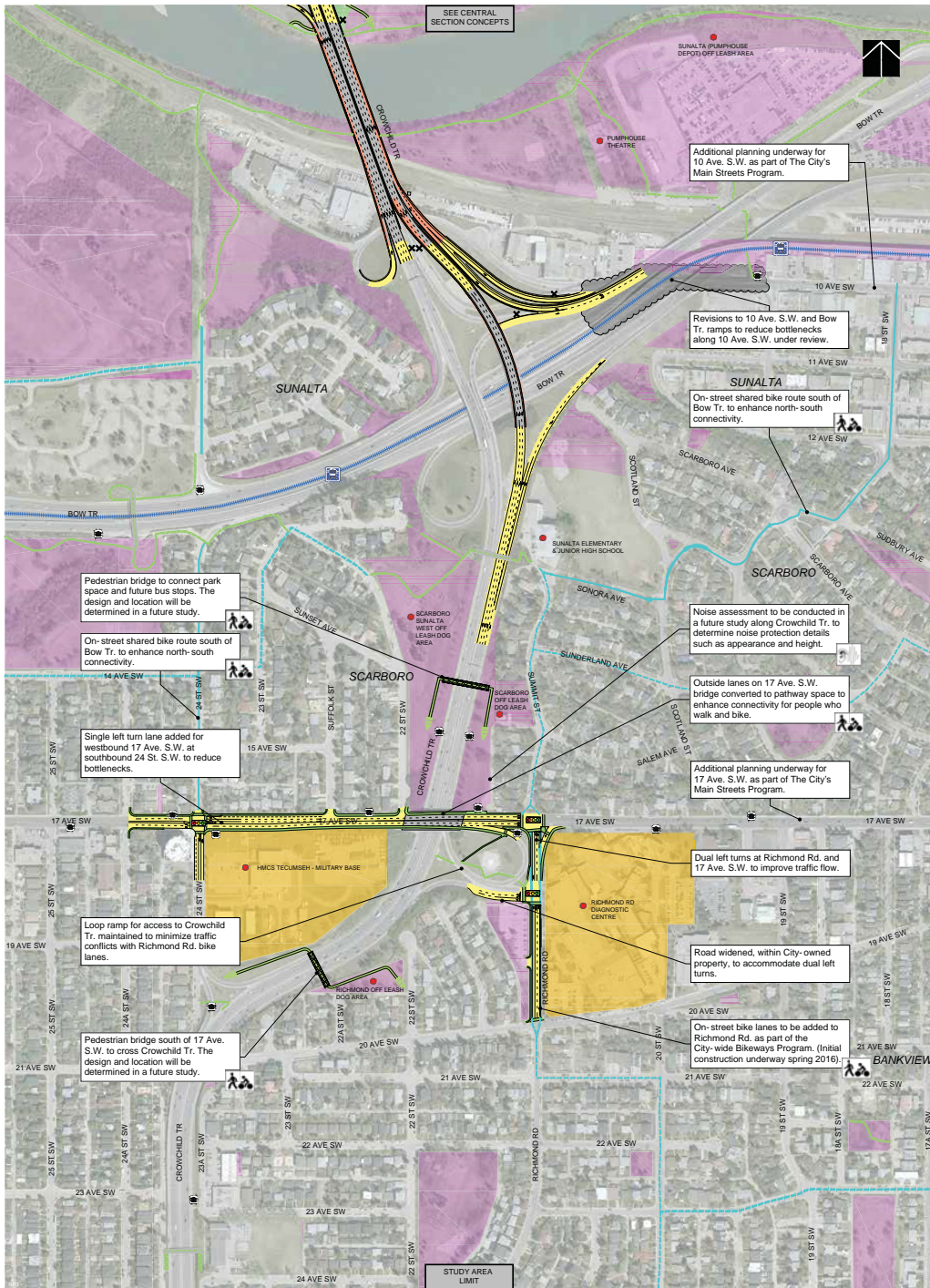


Meets goal well

calgary.ca | contact 311

Crowchild Trail Study

Phase 4: Short-, medium-, and long-term preliminary concepts



calgary.ca | contact 311

Proposed road	Road closures	Proposed pathway/sidewalk	Potential property impacts - Building	Proposed bus stop
Proposed bridge	Lane count/direction	Proposed pedestrian bridge	Potential property impacts - Grading	Existing LRT
Proposed bike route	Traffic signal	Existing pathway / sidewalk	City owned property	Pedestrian / bike opportunities
Proposed wall	Existing pedestrian bridge	Existing on street bike route	Proposed park space	Parks opportunities
			Community places of interest	Noise protection opportunities

Crowchild Trail Study

Phase 4: Short-, medium-, and long-term preliminary concepts



Phase 4 - Concept Evaluation Workshop Concept Scorecard

Review the concepts and evaluate how well each concept meets the 11 project goals:
 1 = Does not meet goal; 2 = Meets goal somewhat; or 3 = Meets goal well.
 Project team members are available at your table if you have any questions about the concepts or exercise.

Key Principle	Project Goal	17 Ave. S.W. Optimization (Short-Term Improvements)	
		Evaluation of: 17 Ave. S.W.	Comments
Key Principle #1: Maintain and Enhance Bordering Communities	Prioritize concepts that fit within existing City-owned lands over concepts that require purchasing private property.		
	Address how changes to Crowchild Trail affect traffic patterns and safety in bordering communities.		
	Recommend current and visually-pleasing ways to reduce traffic noise along Crowchild Trail.		
	Enhance green spaces, park spaces and pathways along the Crowchild Trail corridor.		
Key Principle #2: Improve Travel Along the Corridor	Provide continuous pedestrian and cycling routes nearby, but not on, Crowchild Trail to connect major destinations along the corridor.		
	Provide for convenient, high capacity, high frequency bus service along Crowchild Trail.		
	Enhance the Crowchild Trail corridor to better fulfill its role as a primary route for delivery of emergency response and health services, and for connecting to major destinations.		
	Provide for more continuous traffic flow on Crowchild Trail that addresses bottleneck points and traffic weaving.		
Key Principle #3: Improve Mobility Across the Corridor	Enhance the safety and accessibility of transit stops throughout the Crowchild Trail corridor.		
	Enhance pedestrian and cycling access across Crowchild Trail, both in the number and quality of crossings.		
	Ensure alternate access is provided for bordering communities and businesses if access to Crowchild Trail is removed or changed.		
Project Team Evaluation: City Policy	Support community redevelopment by aligning the Crowchild Trail corridor with community planning policies including the Municipal Development Plan, Area Redevelopment Plans, and the Main Streets initiative.	3	Improved walking, biking and transit infrastructure on 17 Ave. S.W. complements and supports ongoing redevelopment along this important Main Street corridor.
	Support Crowchild Trail's role in the Calgary Transportation Plan as a critical network connection between north and south Calgary, and a vital link to east-west routes.	3	Improvements on 17 Ave. S.W. focus on optimization of existing traffic signals while placing high priority on walking, biking and access to transit service.

Description of Evaluation

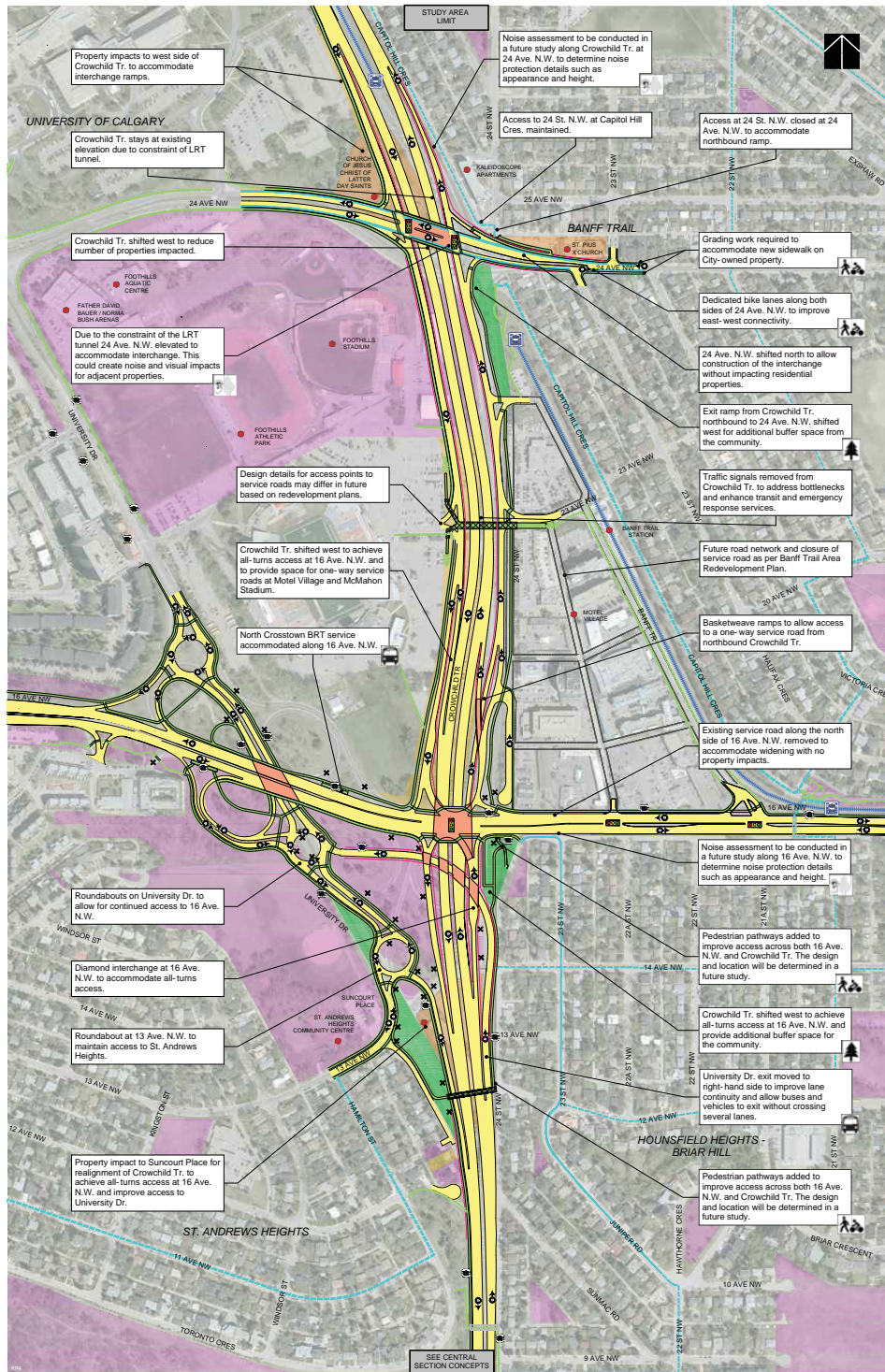
- 1 Does not meet goal
- 2 Meets goal somewhat
- 3 Meets goal well

calgary.ca | contact 311

Crowchild Trail Study

Phase 4: Short-, medium-, and long-term preliminary concepts

Calgary 16 Ave. N.W. & 24 Ave. N.W. Interchanges Medium-Long Term Improvements



Legend	
	Proposed road
	Proposed bridge
	Road closures
	Lane count/reduction
	Proposed pathways/sidewalk
	Proposed pedestrian bridge
	Proposed bike route
	Existing pathway / sidewalk
	Existing pedestrian bridge
	Existing on street bike route
	Potential property impacts - Building
	Potential property impacts - Grading
	City owned property
	Proposed park space
	Community places of interest
	Proposed bus stop
	Existing LRT
	Pedestrian / bike opportunities
	Parks opportunities
	Noise protection opportunities

calgary.ca | contact 311

Crowchild Trail Study

Phase 4: Short-, medium-, and long-term preliminary concepts



Phase 4 - Concept Evaluation Workshop Concept Scorecard

Review the concepts and evaluate how well each concept meets the 11 project goals:

1= Does not meet goal; 2 = Meets goal somewhat; or 3 = Meets goal well.

Project team members are available at your table if you have any questions about the concepts or exercise.

Key Principle	Project Goal	16 Ave. N.W. and 24 Ave. N.W. Interchanges (Medium-Long Term Improvements)	
		Evaluation of: Interchanges	Comments
Key Principle #1: Maintain and Enhance Bordering Communities	Prioritize concepts that fit within existing City-owned lands over concepts that require purchasing private property.		
	Address how changes to Crowchild Trail affect traffic patterns and safety in bordering communities.		
	Recommend current and visually-pleasing ways to reduce traffic noise along Crowchild Trail.		
	Enhance green spaces, park spaces and pathways along the Crowchild Trail corridor.		
Key Principle #2: Improve Travel Along the Corridor	Provide continuous pedestrian and cycling routes nearby, but not on, Crowchild Trail to connect major destinations along the corridor.		
	Provide for convenient, high capacity, high frequency bus service along Crowchild Trail.		
	Enhance the Crowchild Trail corridor to better fulfill its role as a primary route for delivery of emergency response and health services, and for connecting to major destinations.		
	Provide for more continuous traffic flow on Crowchild Trail that addresses bottleneck points and traffic weaving.		
Key Principle #3: Improve Mobility Across the Corridor	Enhance the safety and accessibility of transit stops throughout the Crowchild Trail corridor.		
	Enhance pedestrian and cycling access across Crowchild Trail, both in the number and quality of crossings.		
	Ensure alternate access is provided for bordering communities and businesses if access to Crowchild Trail is removed or changed.		
Project Team Evaluation: City Policy	Support community redevelopment by aligning the Crowchild Trail corridor with community planning policies including the Municipal Development Plan, Area Redevelopment Plans, and the Main Streets initiative.	3	The service roads between 16 Ave. N.W. and 24 Ave. N.W. allow for continued access to the Motel Village and McMahon Stadium lands, supporting redevelopment of both areas in the future.
	Support Crowchild Trail's role in the Calgary Transportation Plan as a critical network connection between north and south Calgary, and a vital link to east-west routes.	3	The interchanges remove bottlenecks from Crowchild Tr. while maintaining access to cross-streets, communities, and employment areas. Connections across Crowchild Tr. prioritize transit, walking and biking.

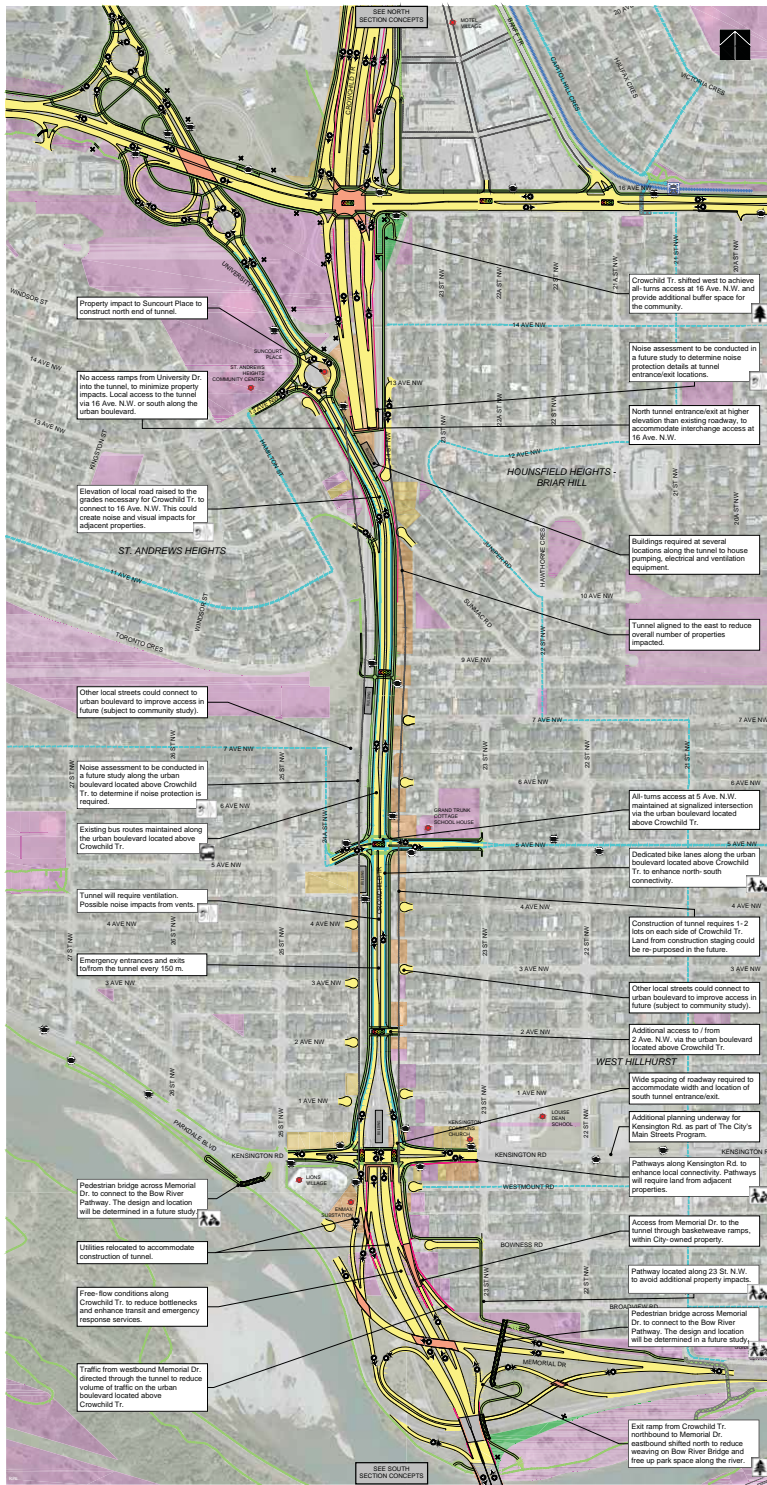
Description of Evaluation

- 1 Does not meet goal
2 Meets goal somewhat
3 Meets goal well

calgary.ca | contact 311

Crowchild Trail Study

Phase 4: Short-, medium-, and long-term preliminary concepts



Legend

Proposed road	Road closure	Proposed path/bike	Potential property impacts - Building	Proposed bus stop
Proposed bridge	Lane construction	Proposed pedestrian bridge	Potential property impacts - Grading	Existing LRT
Traffic signal	Proposed bike route	Proposed utility	City owned property	Pedestrian / bike opportunities
Proposed wall	Existing path/bike	Proposed path/bike	Proposed path/bike	Noise opportunities
	Existing pedestrian bridge	Proposed path/bike	Community places of interest	Noise protection opportunities
	Existing on street bike route			

calgary.ca | contact 311 Crowchild Trail Study

Phase 4: Short-, medium-, and long-term preliminary concepts



Phase 4 - Concept Evaluation Workshop Concept Scorecard

Review the concepts and evaluate how well each concept meets the 11 project goals:
 1 = Does not meet goal; 2 = Meets goal somewhat; or 3 = Meets goal well.
 Project team members are available at your table if you have any questions about the concepts or exercise.

Key Principle	Project Goal	Central Tunnel (Long-Term Improvements)	
		Evaluation of: Central Tunnel	Comments
Key Principle #1: Maintain and Enhance Bordering Communities	Prioritize concepts that fit within existing City-owned lands over concepts that require purchasing private property.		
	Address how changes to Crowchild Trail affect traffic patterns and safety in bordering communities.		
	Recommend current and visually-pleasing ways to reduce traffic noise along Crowchild Trail.		
	Enhance green spaces, park spaces and pathways along the Crowchild Trail corridor.		
Key Principle #2: Improve Travel Along the Corridor	Provide continuous pedestrian and cycling routes nearby, but not on, Crowchild Trail to connect major destinations along the corridor.		
	Provide for convenient, high capacity, high frequency bus service along Crowchild Trail.		
	Enhance the Crowchild Trail corridor to better fulfill its role as a primary route for delivery of emergency response and health services, and for connecting to major destinations.		
	Provide for more continuous traffic flow on Crowchild Trail that addresses bottleneck points and traffic weaving.		
Key Principle #3: Improve Mobility Across the Corridor	Enhance the safety and accessibility of transit stops throughout the Crowchild Trail corridor.		
	Enhance pedestrian and cycling access across Crowchild Trail, both in the number and quality of crossings.		
	Ensure alternate access is provided for bordering communities and businesses if access to Crowchild Trail is removed or changed.		
Project Team Evaluation: City Policy	Support community redevelopment by aligning the Crowchild Trail corridor with community planning policies including the Municipal Development Plan, Area Redevelopment Plans, and the Main Streets initiative.	3	Improved walking, biking and transit infrastructure on 17 Ave. S.W. complements and supports ongoing redevelopment along this important Main Street corridor.
	Support Crowchild Trail's role in the Calgary Transportation Plan as a critical network connection between north and south Calgary, and a vital link to east-west routes.	3	Improvements on 17 Ave. S.W. focus on optimization of existing traffic signals while placing high priority on walking, biking and access to transit service.

Description of Evaluation

- 1 Does not meet goal
- 2 Meets goal somewhat
- 3 Meets goal well

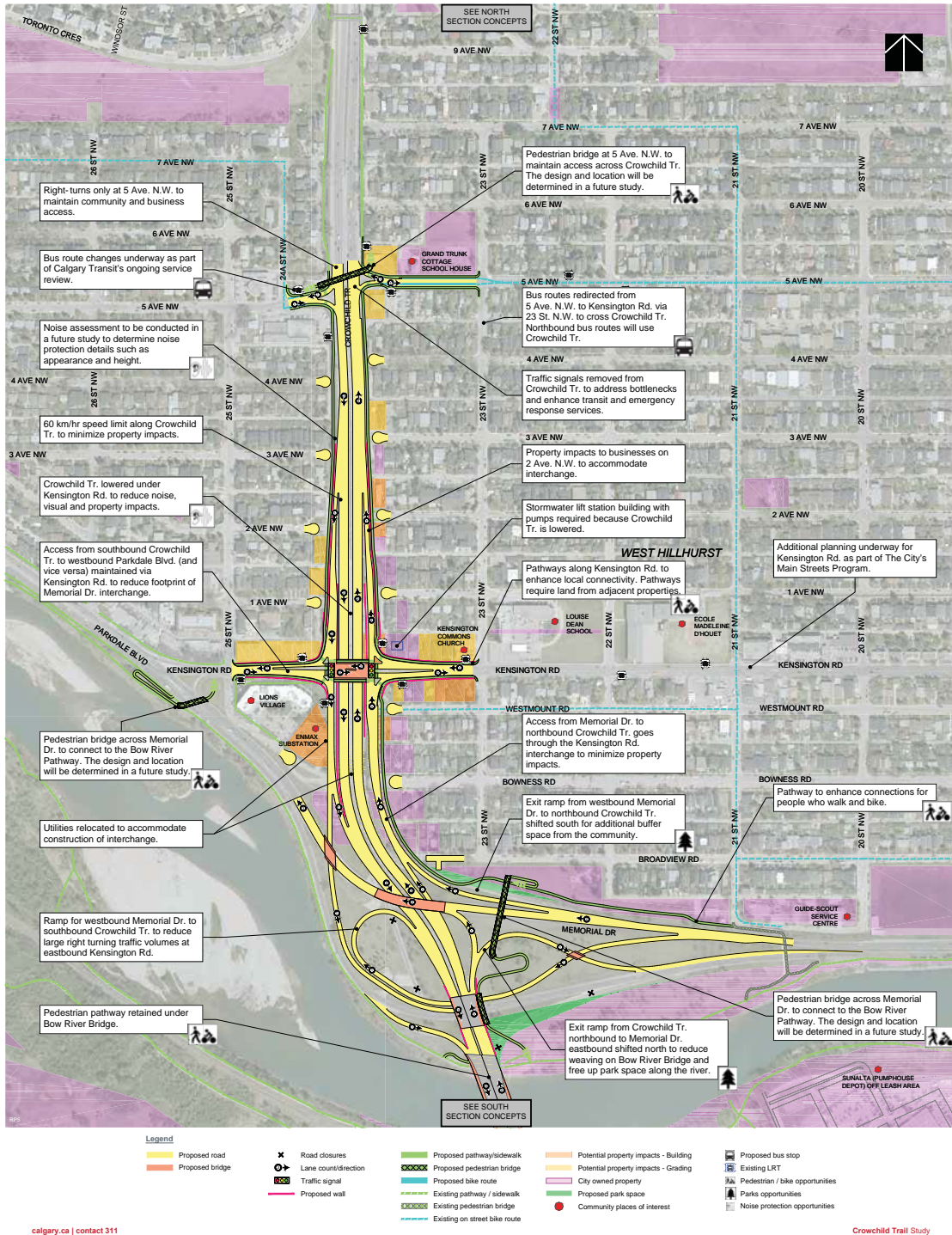
calgary.ca | contact 311

Crowchild Trail Study

Phase 4: Short-, medium-, and long-term preliminary concepts



Kensington Rd. Interchange Medium-Long Term Improvements



Phase 4: Short-, medium-, and long-term preliminary concepts



Phase 4 - Concept Evaluation Workshop Concept Scorecard

Review the concepts and evaluate how well each concept meets the 11 project goals:
 1 = Does not meet goal; 2 = Meets goal somewhat; or 3 = Meets goal well.
 Project team members are available at your table if you have any questions about the concepts or exercise.

Key Principle	Project Goal	Kensington Rd. Interchange (Medium-Long Term Improvements)	
		Evaluation of: Kensington Rd. Interchange	Comments
Key Principle #1: Maintain and Enhance Bordering Communities	Prioritize concepts that fit within existing City-owned lands over concepts that require purchasing private property.		
	Address how changes to Crowchild Trail affect traffic patterns and safety in bordering communities.		
	Recommend current and visually-pleasing ways to reduce traffic noise along Crowchild Trail.		
	Enhance green spaces, park spaces and pathways along the Crowchild Trail corridor.		
Key Principle #2: Improve Travel Along the Corridor	Provide continuous pedestrian and cycling routes nearby, but not on, Crowchild Trail to connect major destinations along the corridor.		
	Provide for convenient, high capacity, high frequency bus service along Crowchild Trail.		
	Enhance the Crowchild Trail corridor to better fulfill its role as a primary route for delivery of emergency response and health services, and for connecting to major destinations.		
	Provide for more continuous traffic flow on Crowchild Trail that addresses bottleneck points and traffic weaving.		
Key Principle #3: Improve Mobility Across the Corridor	Enhance the safety and accessibility of transit stops throughout the Crowchild Trail corridor.		
	Enhance pedestrian and cycling access across Crowchild Trail, both in the number and quality of crossings.		
	Ensure alternate access is provided for bordering communities and businesses if access to Crowchild Trail is removed or changed.		
Project Team Evaluation: City Policy	Support community redevelopment by aligning the Crowchild Trail corridor with community planning policies including the Municipal Development Plan, Area Redevelopment Plans, and the Main Streets initiative.	3	Improved walking, biking and transit infrastructure on 17 Ave. S.W. complements and supports ongoing redevelopment along this important Main Street corridor.
	Support Crowchild Trail's role in the Calgary Transportation Plan as a critical network connection between north and south Calgary, and a vital link to east-west routes.	3	Improvements on 17 Ave. S.W. focus on optimization of existing traffic signals while placing high priority on walking, biking and access to transit service.

Description of Evaluation

- 1 Does not meet goal
- 2 Meets goal somewhat
- 3 Meets goal well

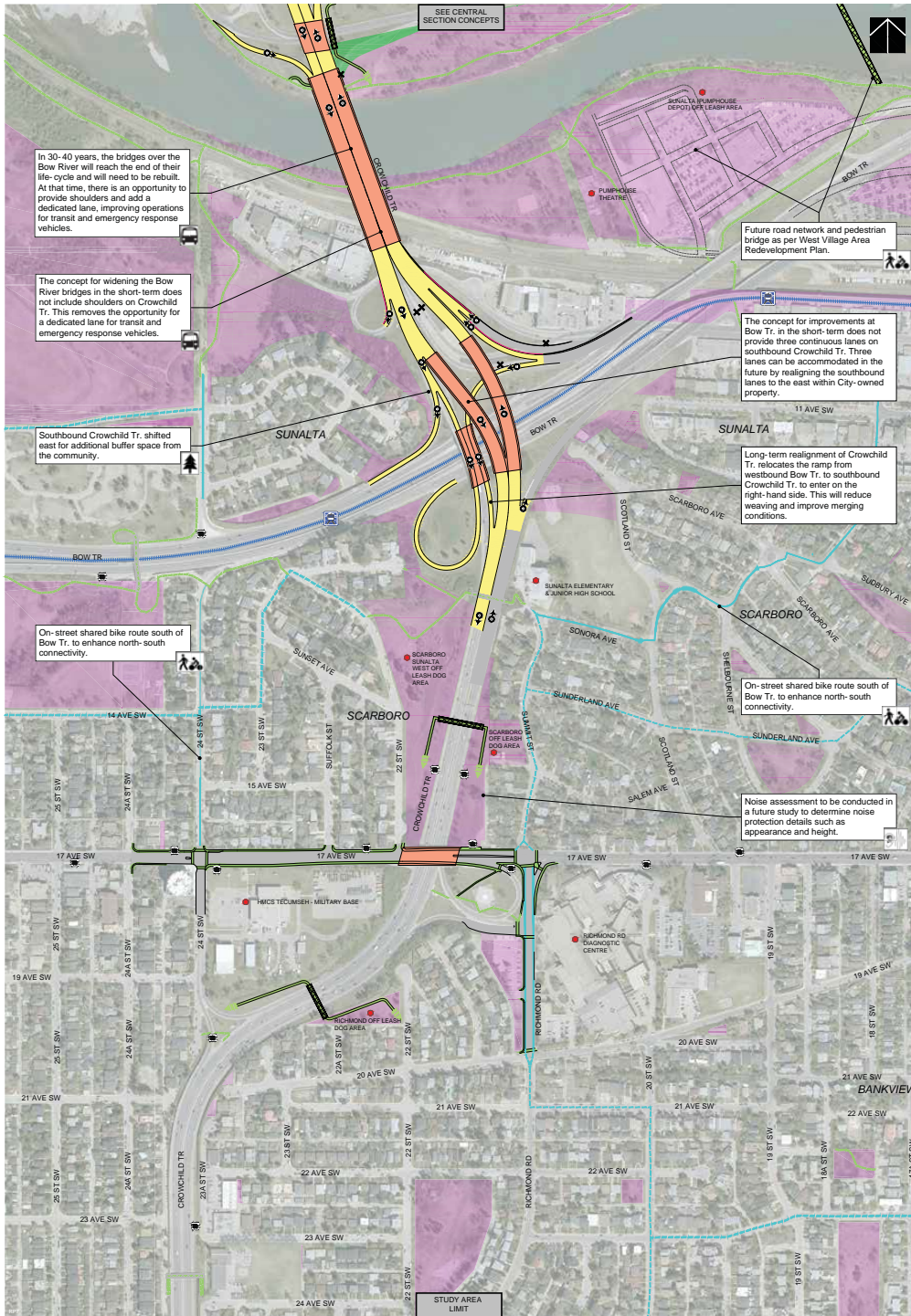
calgary.ca | contact 311

Crowchild Trail Study

Phase 4: Short-, medium-, and long-term preliminary concepts



Rebuild Crowchild Tr. Bridges Long-Term Improvements



- | | | | | |
|-----------------|----------------------|-------------------------------|---------------------------------------|---------------------------------|
| Proposed road | Road closures | Proposed pathway/sidewalk | Potential property impacts - Building | Proposed bus stop |
| Proposed bridge | Lane count/direction | Proposed pedestrian bridge | Potential property impacts - Grading | Existing LRT |
| Traffic signal | Proposed wall | Proposed bike route | City owned property | Pedestrian / bike opportunities |
| | | Existing pathway / sidewalk | Proposed park space | Parks opportunities |
| | | Existing pedestrian bridge | Community places of interest | Noise protection opportunities |
| | | Existing on street bike route | | |

calgary.ca | contact 311

Crowchild Trail Study

Phase 4: Short-, medium-, and long-term preliminary concepts



Phase 4 - Concept Evaluation Workshop Concept Scorecard

Review the concepts and evaluate how well each concept meets the 11 project goals:

1 = Does not meet goal; 2 = Meets goal somewhat; or 3 = Meets goal well.

Project team members are available at your table if you have any questions about the concepts or exercise.

Key Principle	Project Goal	Rebuild Crowchild Tr. Bridges (Long-Term Improvements)	
		Evaluation of: Rebuild Crowchild Tr. Bridges	Comments
Key Principle #1: Maintain and Enhance Bordering Communities	Prioritize concepts that fit within existing City-owned lands over concepts that require purchasing private property.		
	Address how changes to Crowchild Trail affect traffic patterns and safety in bordering communities.		
	Recommend current and visually-pleasing ways to reduce traffic noise along Crowchild Trail.		
	Enhance green spaces, park spaces and pathways along the Crowchild Trail corridor.		
Key Principle #2: Improve Travel Along the Corridor	Provide continuous pedestrian and cycling routes nearby, but not on, Crowchild Trail to connect major destinations along the corridor.		
	Provide for convenient, high capacity, high frequency bus service along Crowchild Trail.		
	Enhance the Crowchild Trail corridor to better fulfill its role as a primary route for delivery of emergency response and health services, and for connecting to major destinations.		
	Provide for more continuous traffic flow on Crowchild Trail that addresses bottleneck points and traffic weaving.		
Key Principle #3: Improve Mobility Across the Corridor	Enhance the safety and accessibility of transit stops throughout the Crowchild Trail corridor.		
	Enhance pedestrian and cycling access across Crowchild Trail, both in the number and quality of crossings.		
	Ensure alternate access is provided for bordering communities and businesses if access to Crowchild Trail is removed or changed.		
Project Team Evaluation: City Policy	Support community redevelopment by aligning the Crowchild Trail corridor with community planning policies including the Municipal Development Plan, Area Redevelopment Plans, and the Main Streets initiative.	3	Reconstruction of the Bow River Bridges supports anticipated growth and long-term redevelopment initiatives along Crowchild Tr. such as the West Village Area Redevelopment Plan.
	Support Crowchild Trail's role in the Calgary Transportation Plan as a critical network connection between north and south Calgary, and a vital link to east-west routes.	3	Reconstruction of the Bow River Bridges provides lane continuity on southbound Crowchild Tr., improves transit service, and allows for northerly extension of transit-only lanes.

Description of Evaluation



1 Does not meet goal



2 Meets goal somewhat



3 Meets goal well

calgary.ca | contact 311

Crowchild Trail Study