

The background of the slide is a photograph of a winter scene. In the foreground, a red wooden bench with black metal armrests sits on a snow-covered ground. To the left of the bench, a path of snow and ice leads towards the background. The path is marked with tracks, possibly from a sled or skis. In the background, there are bare trees and a building partially visible through the branches. The sky is a clear, bright blue.

Snow and Ice Control Investments to Improve Accessibility

TT2021-0819
SPC on Transportation
and Transit



Previous Council Direction or Policy



In 2016 January, Council approved a pedestrian strategy called ***Step Forward*** that envisions a safer, more inviting and better maintained realm for pedestrians.

This plan set out 49 actions for Administration to take to achieve this goal, to encourage walking more often as a transportation mode. Four of these actions were directly related to snow and ice control for pedestrian spaces.

Previous Council Direction or Policy

2018 June 25, Council approved the recommendations contained within a report on Improving Accessibility and Reducing Injuries through Snow and Ice Control (TT2018-0467).

This included the creation of penalties (fines) for Property Owners that do not clear snow/ice from the public sidewalks that they're responsible for.

2018 November 14, Council approved one-time funding of \$18.5 million for enhanced Snow and Ice Control (SNIC) services to improve the accessibility, safety and equity of Calgary's walking network through the end of 2020.



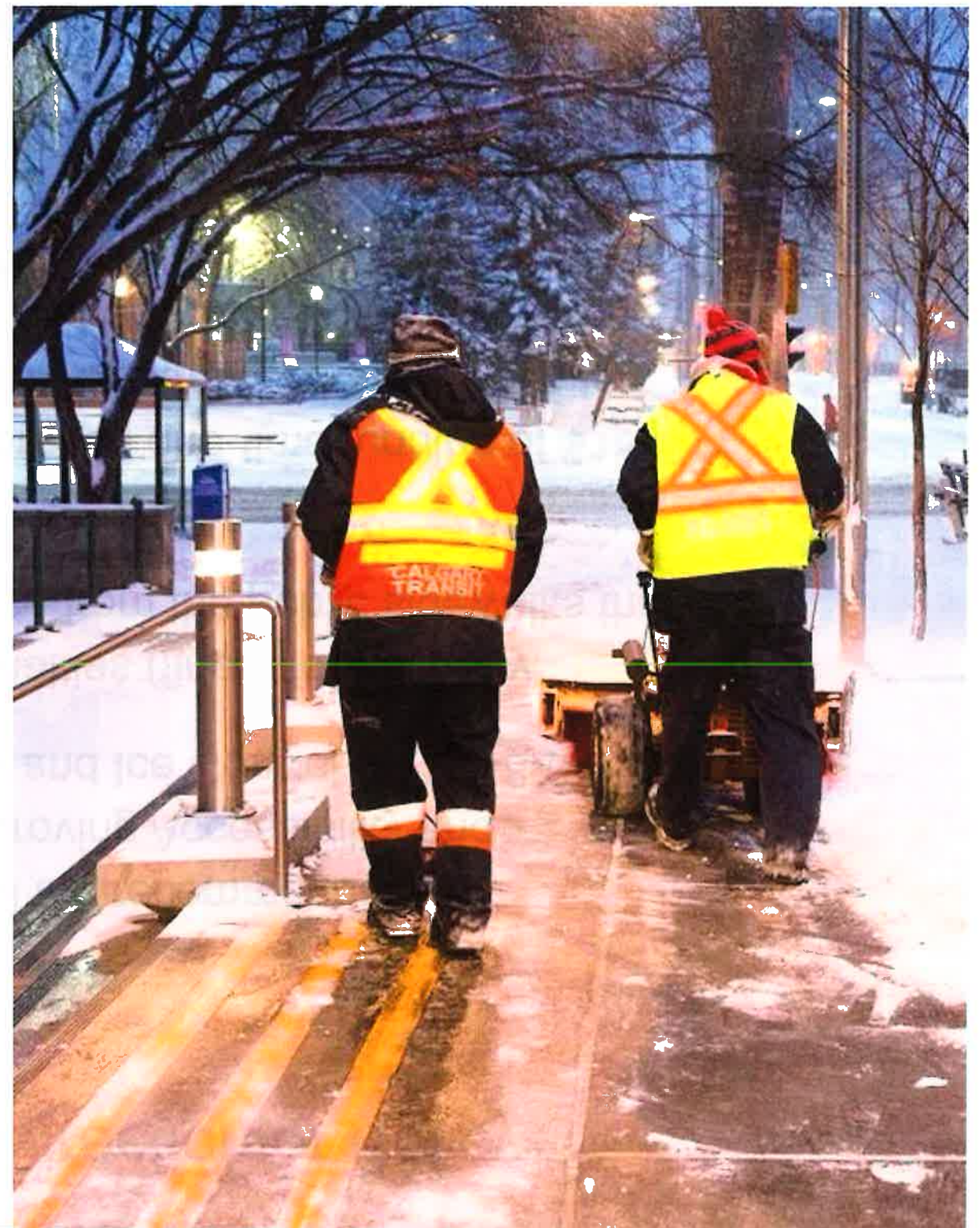
Reviewing the Service Changes

Enforcement

Service Delivery

Stakeholder Feedback

Next Steps



Enforcement



Public sidewalks and pathways bordering private property must be cleared of snow and ice within 24 hours of a snowfall ending

Average of 11,000 complaints each year

Calgary Community Standards notify private property owners to clear the sidewalk

90% compliance (success)

Each year, about 1100 property owners do not comply with the warning. Sidewalks are then cleared by a City contractor, and the property owner is invoiced for the cost of snow removal. Minimum flat rate of **\$150** plus GST / administrative fees.

Violation tickets can also be issued, usually for property owners who repeatedly fail to keep the sidewalks clear
\$250 penalty

Tickets Issued for Failing to Keep Sidewalks Clear		
2019 (Q4)	2020	2021 (Q1)
6	56	12

Snapshot of City SNIC Service Delivery

SNIC Services	
Roads	Roadways, sidewalks, bus stop pads, and some pathways
Parks	Pathways and sidewalks adjacent to park spaces
Transit	LRT Stations
Other BUs	Sidewalks or pathways adjacent to their facility



Roads, Parks and Transit regularly coordinate work



Current SNIC Service for Pedestrians

Infrastructure	Service	Infrastructure	Service
Pathways	442 km are completed 24 hours after snow stops falling	Wheelchair Curb Ramps	500 priority locations. Windrows cleared within 24 hours
Sidewalks (City inventory to clear)	958 km are completed within 24 hours. Includes Parks, Roads and City facilities	Medians and Traffic Islands (at crossing locations)	1970 locations cleared
Bus Zones	1089 priority locations are completed within 24 hours	Traffic Calming Curb crossings	123 locations cleared
Pedestrian Bridges	19.2 km cleared within 24 hours	Public stairs and other locations requiring hand-clearing	190 locations cleared

Enhanced Snow & Ice Control Services

Public sidewalks adjacent to City property

To clear these sidewalks within 24 hours of a snowfall – holding the City to the same standard as private property owners

Pathway clearing

Adding 100 km of pathway to be cleared within 24 hours

Wheelchair ramps

To plow windrows away from 500 high-priority wheelchair ramps at street crossings



SNIC Service Budget for Sidewalks & Pathways

Seasonal spending on SNIC for Sidewalks and Pathways (\$000's)			
	Budget	Expenditures	Recovery
Winter 2018/19	4193	8235	4042
Winter 2019/20	3612	8492	4880
Winter 2020/21	3029	5554	2525
2018-2021 Total	10,835	22,282	11,447



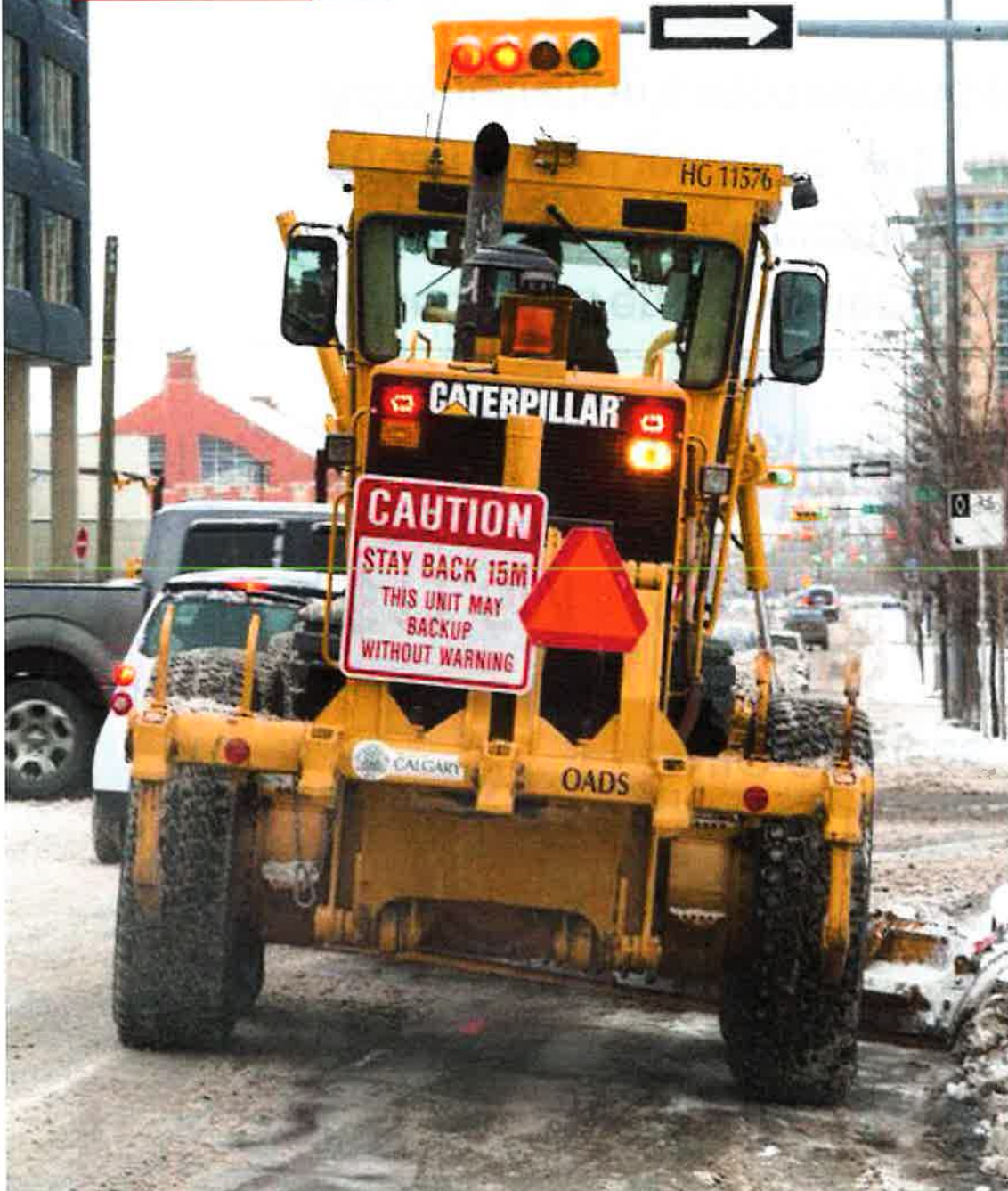
Current Funding Status

\$18.5M Original Investment from Council for Pedestrian SNIC Services, including Communications

\$11.5M Actual spend

\$7M Remaining funds

Based on average winter conditions, the enhanced levels of SNIC service and communications can be maintained through to the end of **2022 December** with no additional funding. This is Administration's recommendation.



Stakeholder Feedback

Advisory Committee for Accessibility (ACA)

- ❖ Marked improvement in how people navigate downtown because of the resources provided to SNIC in the last couple of years
- ❖ Assists with navigation from the LRT along 7th Avenue to locations in the downtown where people work, attend school, play and have medical appointments
- ❖ Clearing of windrows has been ideal for people using mobility devices, guide dogs and white canes
- ❖ Pathway clearing has also been improved

ACA Recommendations to Council

Gaps to be closed, and areas to be re-evaluated to improve accessibility:

- ❖ Clearing windrows away from all bus stops
- ❖ Clearing the portion of public sidewalks that cross laneways/aprons
- ❖ Clearing curb ramps & access to crosswalks that have windrows
- ❖ Develop a priority system for clearing windrows and using a grader gate on plows
- ❖ Engineered walkway snow clearing needs to be addressed
- ❖ Communications: Social media campaign to outline to homeowners & business owners what their responsibilities are for snow clearing.

Next Steps

Establishing the SNIC service levels for pedestrian spaces going forward, including base funding requirements and policy updates, will require Council direction in 2022 November when the 2023-2026 budget cycle is being discussed and approved.

Changes to SNIC service levels for 2022, including new service delivery to areas like Engineered Walkways, would require Council direction before or during the 2021 November budget deliberations.



Recommendations

That the SPC on Transportation and Transit recommends that Council receive this report for the Council Record.



End of Report

TT2021-0819

Snow and Ice Control Investments
to Improve Accessibility