

Calgary



CITY OF CALGARY
RECEIVED
IN COUNCIL CHAMBER

JUN 16 2021

ITEM: 7.2 TT 2021-0953
DISTRIBUTION
CITY CLERK'S DEPARTMENT



The Future of 16 Avenue N.W.

SPC on Transportation and Transit
June 16, 2021

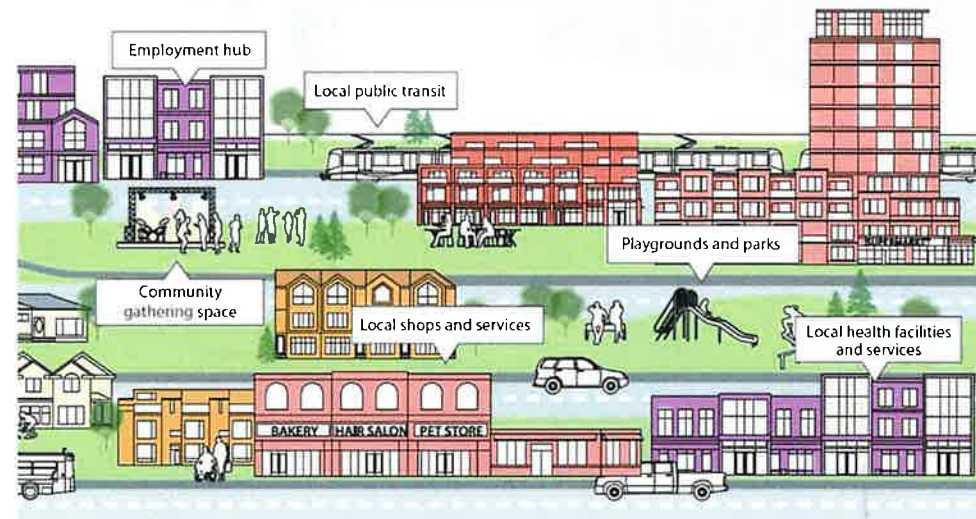
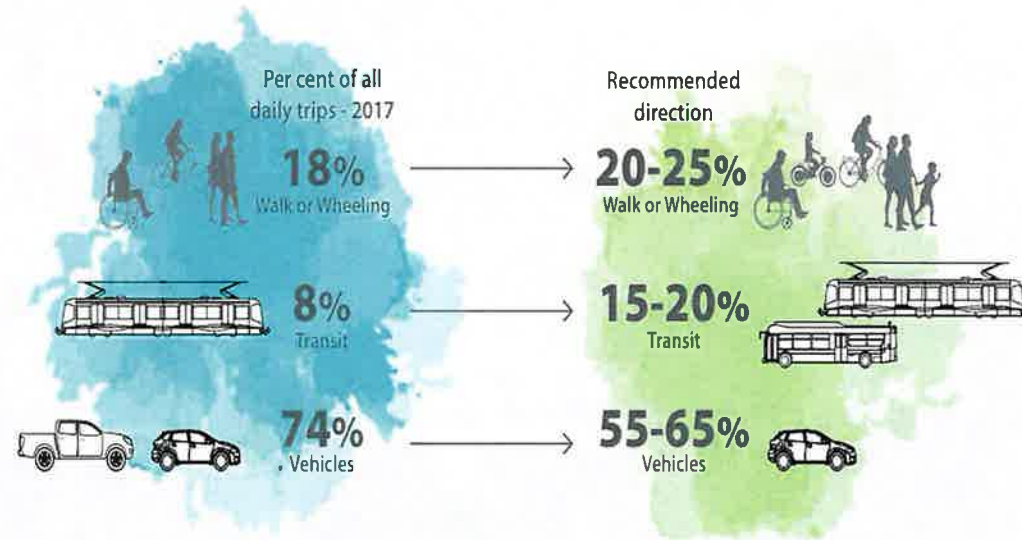
Policy guidance

- City Shaping
- Prosperous Economy
- Reduction in Climate Impact
- Equitable Mobility Choices
- Great Places

Vision for 16 Avenue N.W.

- Connect Calgarians to places
- Primary Goods Movement Corridor
- High Occupancy Vehicle Corridor
- Skeletal road
- Urban Boulevard and a Main Street

Current and future travel choices





Future of 16 Avenue N.W. Project



Project Principles

- Social and Healthy Lifestyle
- Mobility and Function
- Character and Identity
- Economic Vitality

Citizen Involved Process



Ideas and Concerns - Main Street Segment

Identify a place on the map and use a marker directly on the map – or on a sticky note – to tell us about your idea or concern for the



DISCOVER PHASE

Project Initiation and Definition

SPRING TO FALL 2020



EXPLORE PHASE

Concept Development and Analysis

FALL TO WINTER 2020



REVEAL PHASE

Preferred Concept Selection

WINTER TO SPRING 2021



Sarcee Trail & 16 Avenue N.W. ultimate interchange



Function

- Connecting people to places
- Moving goods
- Supporting growth in northwest Calgary
- Ring road connection
- Major river crossing
- Skeletal road

Opportunities

- Enhanced walking and wheeling connections
- Enhanced safety
- Improved speed transition
- Pedestrian overpass (2)

Challenges

- Prediction of growth in traffic volumes, up to 74,000 vehicles per day in 20+ years



Source: MCA



Shouldice Park



Function

- Supports businesses
- Community connection
- Complements Bowness Road Main Street
- Connects people to sports facilities
- Bow River pathway connection
- Moving goods
- Urban Boulevard

Opportunities

- Enhanced public realm
- Greener street
- Safer movement along and across
- Highlight community identity
- Create a destination
- Bylaw setback in place

Challenges

- Competing policies
- Development potential of lots in one block
- Achieving a Neighborhood Main Street

Main Street Segment in Montgomery



Alberta Children's Hospital
Source: AHS



Foothills Medical Centre
Source: AHS



Function

- Emergency services
- Supports businesses
- Connects people to key destinations
- Skeletal road

Opportunities

- Enhanced walking and wheeling connections
- Pedestrian overpass (1)
- Promote bike connectivity along 29 Street N.W.
- Combine previously approved plans

Challenges

- Prediction of growth in traffic volumes, up to 74,000 vehicles per day in 20+ years



Shaganappi Trail & 16 Avenue N.W. Long-Term plan



Crowchild Trail & 16 Avenue N.W. Long-Term plan

East Segment

Recommendations – Focus on Safety



- Lower speed limit
- Pavement rehabilitation
- Median barrier installation
- New traffic signal at 43 Street N.W.
- Protected left turn movement at Home Road N.W.
- Driver feedback sign for speeding on Home Road N.W.
- Improved transit stops and benches
- Safety improvements to merge ramps
- New multi-use crosswalk markings added at 29 Street N.W. intersection

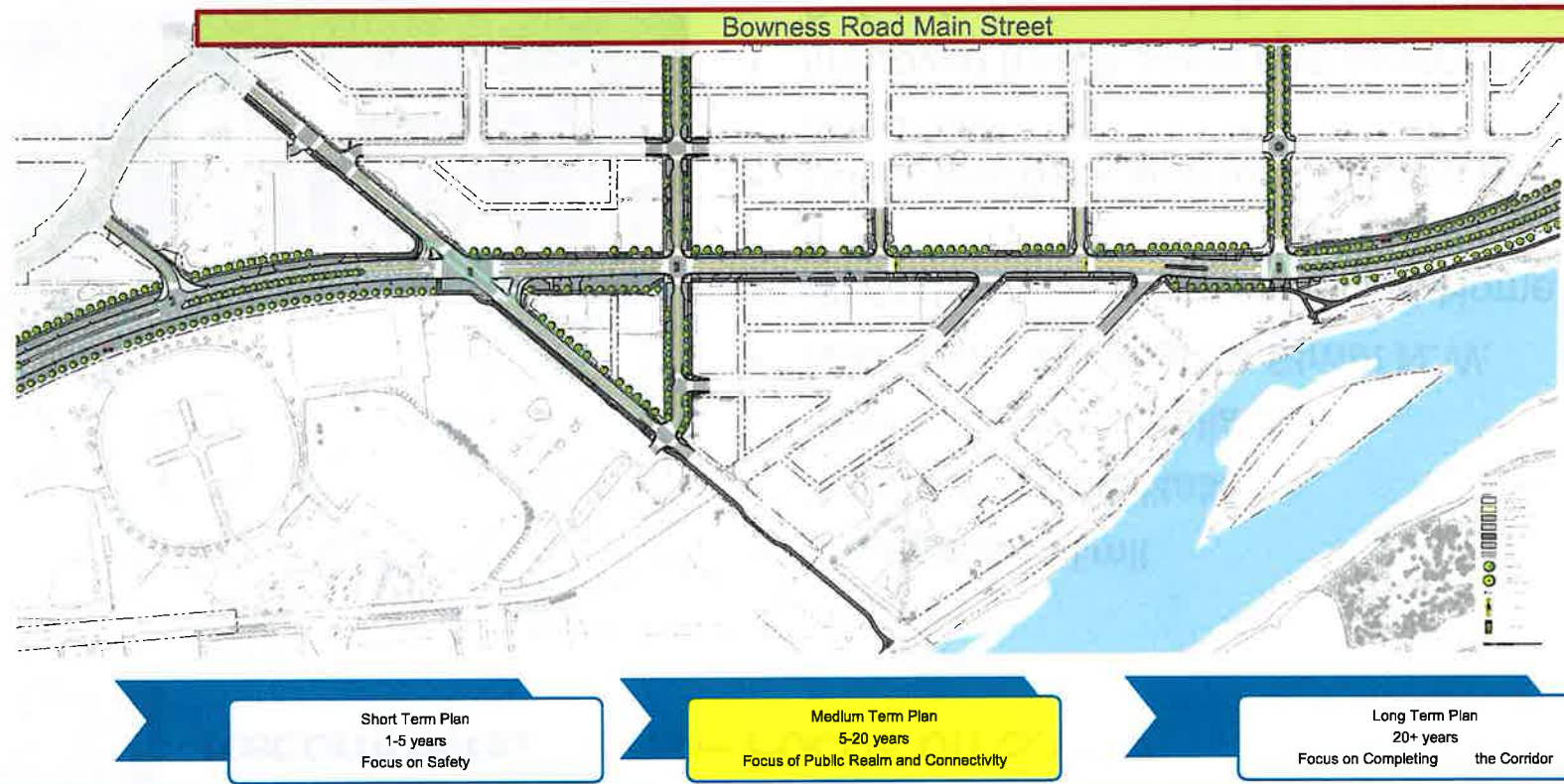
Short Term Plan
1-5 years
Focus on Safety

Medium Term Plan
5-20 years
Focus of Public Realm and Connectivity

Long Term Plan
20+ years
Focus on Completing the Corridor

Recommendations – Focus on Community

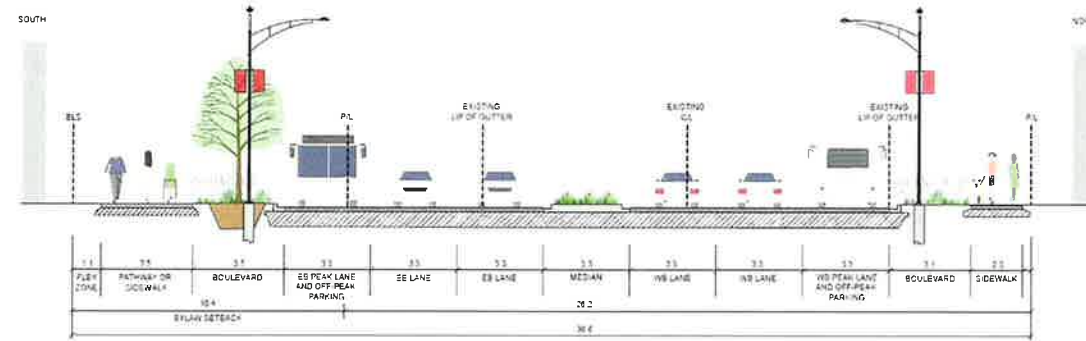
- Enhanced gateway on both ends of Montgomery
- Changed design character of the road
- Unified public realm connections
- 3.3m narrow travel lanes (2 in each direction with turn lanes)
- New traffic signals at 46 and 49 Streets N.W.
- Retain bylaw setback, add trees
- New east-west pathways & pedestrian overpasses in East and West Segments



Recommendations – Focus on Future Flexibility

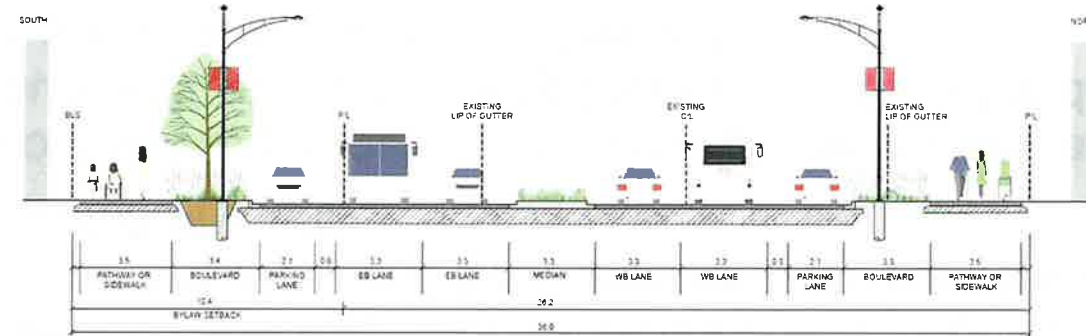
FLEXIBLE ALTERNATIVE A

6-LANES WITH
OFF-PEAK PARKING



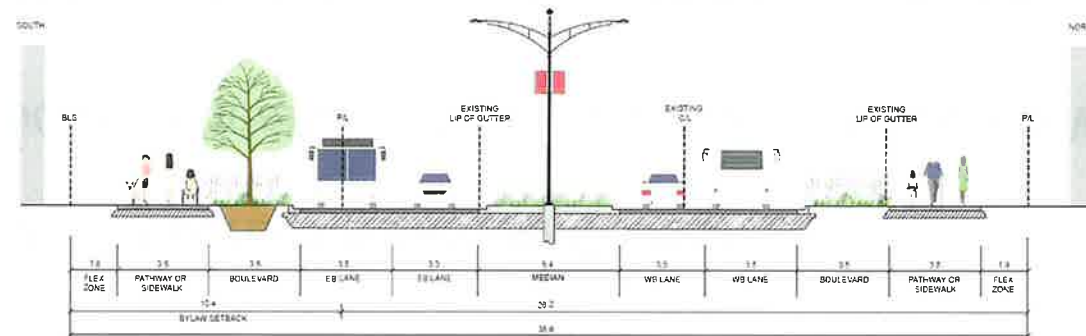
FLEXIBLE ALTERNATIVE B

4-LANES WITH
DEDICATED PARKING



FLEXIBLE ALTERNATIVE C

4-LANES WITH
WIDER PUBLIC REALM



Short Term Plan
1-5 years
Focus on Safety

Medium Term Plan
5-20 years
Focus of Public Realm and Connectivity

Long Term Plan
20+ years
Focus on Completing the Corridor



Recommendations

The SPC on Transportation & Transit recommend to Council:

1. Receive the short-term recommendations of the Future of 16 Avenue N.W. for information;
2. Approve and adopt the medium- and long-term recommendations of the Future of 16 Avenue N.W., for the West and East Segments as summarized in Attachment 1, Executive Summary; and
3. Direct Administration to continue to protect the 10.363m bylaw setback along the south side of 16 Avenue N.W. in Montgomery between 46 Street and MacKay Road for flexible use of public space as needed.