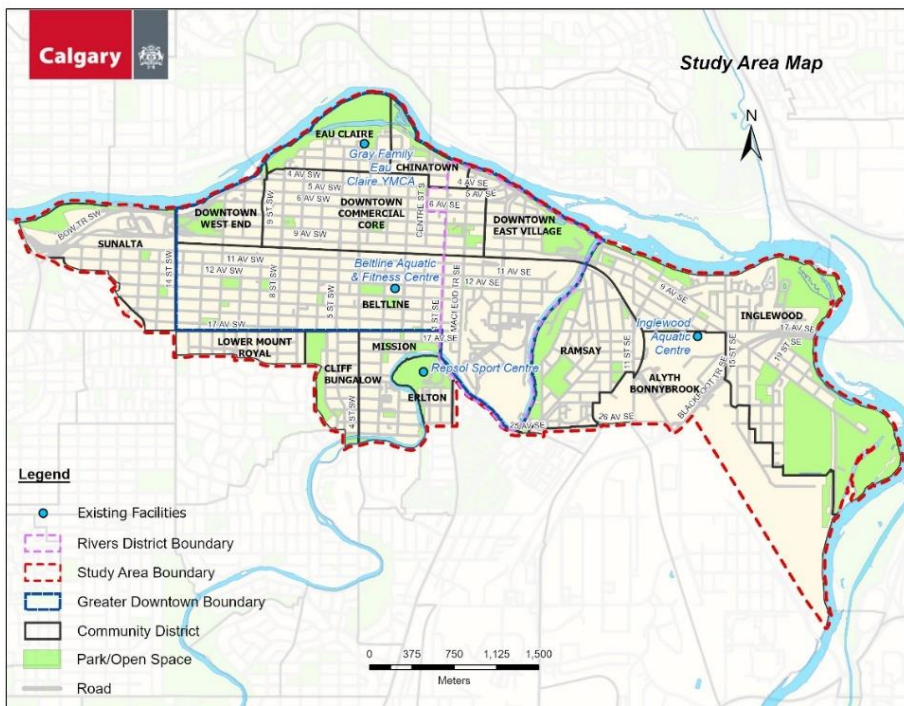


RECOMMENDED AQUATIC AMENITY IN THE GREATER DOWNTOWN AREA

Needs Assessment and Analysis

Administration conducted a needs assessment for communities that primarily utilize the Beltline and Inglewood Aquatic Centres (Beltline and Inglewood facilities), Repsol Sports Centre (Repsol Centre), and Gray Family Eau Claire YMCA. Figure 1 below shows the needs assessment study area.

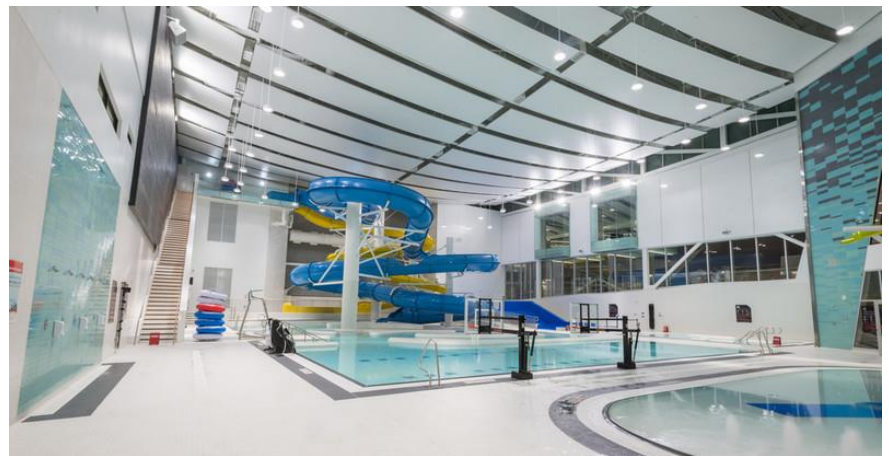
Figure 1



Despite the confirmed closure of the Gray Family Eau Claire YMCA, and the proposed long-term closure of the Beltline and Inglewood facilities, the study area is currently served by City or partner-operated facilities that provide fundamental aquatic amenities (e.g. rectangular 25 m pool basins with basic leisure amenities that provide a basic or community function, such as swimming for fun or lane swimming). The study area is not currently provided with specialized leisure aquatic amenities.

Figure 2

Examples of specialized leisure aquatic amenities include tot pools, zero depth entry basins, and water-based play features. Figure 2 shows part of the pool area at Brookfield Residential YMCA at Seton, a facility that provides specialized leisure aquatic amenities that include water slides, a lazy river, and a flow rider.



Addressing community need

Administration conducted a facility options analysis to understand how specialized leisure aquatic amenities could be provided in the study area and how to accommodate the combined 161,325 annual swim trips that would be displaced from the closure of the Beltline and Inglewood facilities and Gray Family Eau Claire YMCA.

Administration used social, economic and environmental criteria to investigate if existing facilities could be expanded or if a new facility could be developed on a new site. Nine sites were examined through a variety of metrics, including cost, site readiness, location, accessibility, local policy plan alignment, and environmental impact.

Based on this analysis, Repsol Centre was determined to be the best option due to its:

- prime location at the gateway to downtown, adjacent to the Elbow River, playground and pathway network;
- functionality as a multi-purpose aquatic and fitness hub serving sport and the surrounding communities;
- accessibility by multiple transportation modes;
- proximity to the Beltline community (that has the highest current and projected population within the study area), while effectively serving the entire study area; and
- ability to provide specialized leisure aquatic amenities in a timely and cost-effective manner.

Investment in the modernization and upgrade of Repsol Centre, a City-owned asset, meets community and Calgarians' needs for specialized leisure aquatic amenities, accommodates the displaced annual swim trips, prevents future costs for the Beltline and Inglewood facilities, and extends Repsol Centre's useful service life. The project is anticipated to cost approximately \$45 million (based on a class 5 cost estimate) and could be completed in three to four years. A component of the work will be a comprehensive urban mixed-use master planning study that will prepare an integrated Master Plan of the Repsol Centre site.

Figure 3 on the following page shows the absence of specialized leisure aquatic amenities in the needs assessment study area.

Figure 4 on the following page shows how development of specialized leisure aquatic amenities at Repsol Centre meets the need.

Figure 3

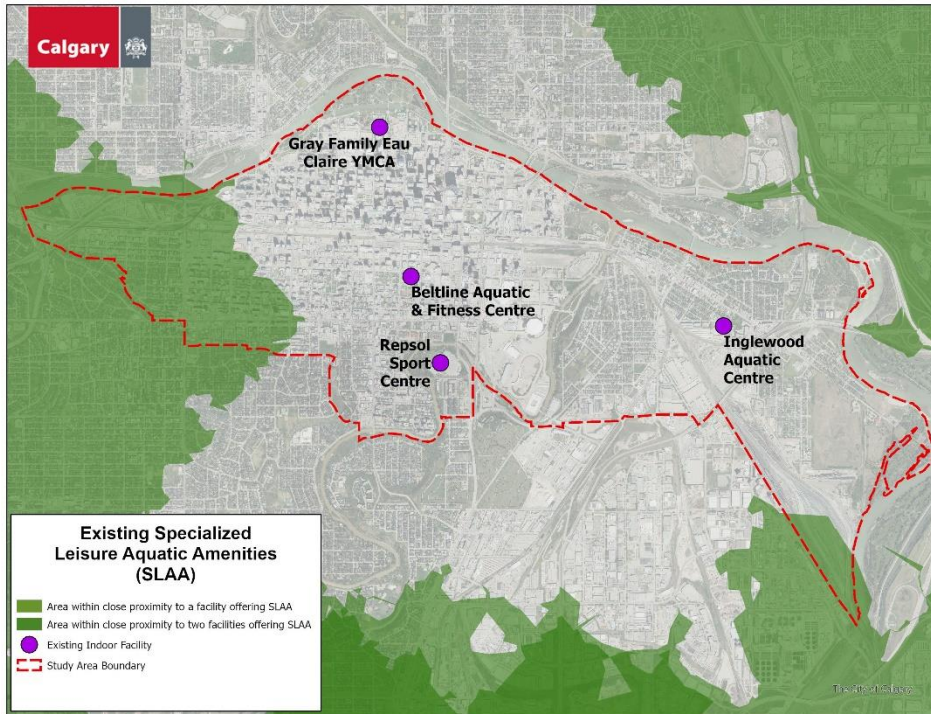


Figure 4

