

1

CITY OF CALGARY  
**RECEIVED**  
IN COUNCIL CHAMBER  
MAY 31 2021  
ITEM #8.1.2 CP2021-0251  
Public  
CITY CLERK'S DEPARTMENT

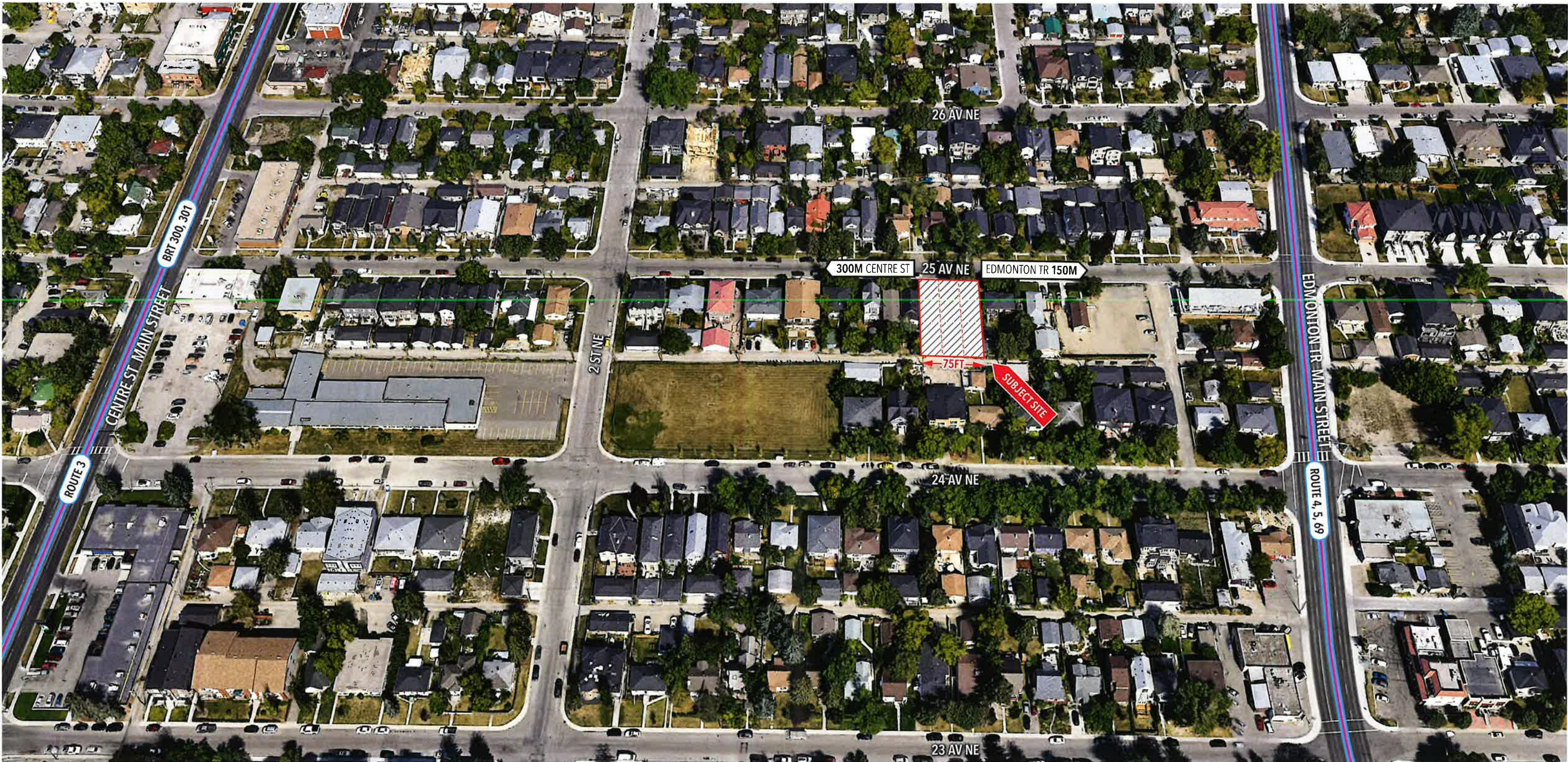
# Land Use Redesignation

R-C2 to R-CG: 231, 235 - 25 AV NW

---



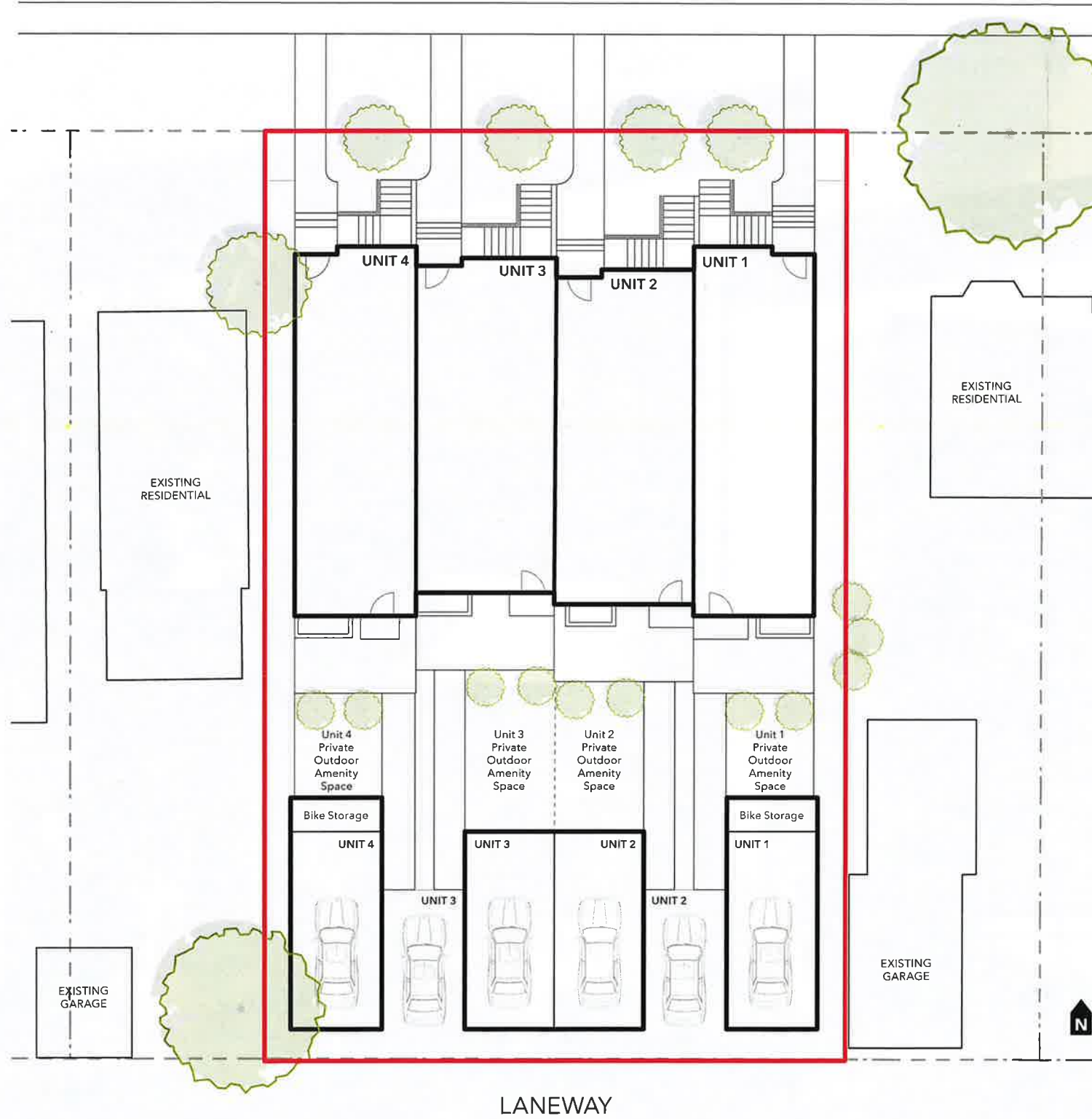






# Schematic Plan

25 AV NE







# Supplementary Information

---



# Outreach Strategies

NEIGHBOUR POSTCARD






## Proposed Land Use Change

---

**Hello neighbour!**  
 We are proposing a land use change at:  
 231 + 235 25 Avenue NE | R-C2 to R-CG

The proposed land use change would transition these lands to a Residential – Grade-Oriented Infill (R-CG) District to realize the proposed development vision, which will introduce new and innovative housing options for Calgarians looking to live in amenity-rich inner city communities like Tuxedo Park. The proposed development vision includes four new street-oriented rowhomes, with front doors facing 25 Avenue NE, individual rear yard amenity spaces and parking accessed via the rear lane.

The proposed use is well-suited to the site, given its strategic location, surrounding context, and lot characteristics. Like R-C2, the R-CG District is a low density district intended to facilitate grade-oriented development that is compatible with other low density building forms.

**If you have any questions, comments or concerns, get in touch:**  
 Email [engage@civicworks.ca](mailto:engage@civicworks.ca) or call 587.747.0317

SUPPLEMENTARY SITE SIGN

