



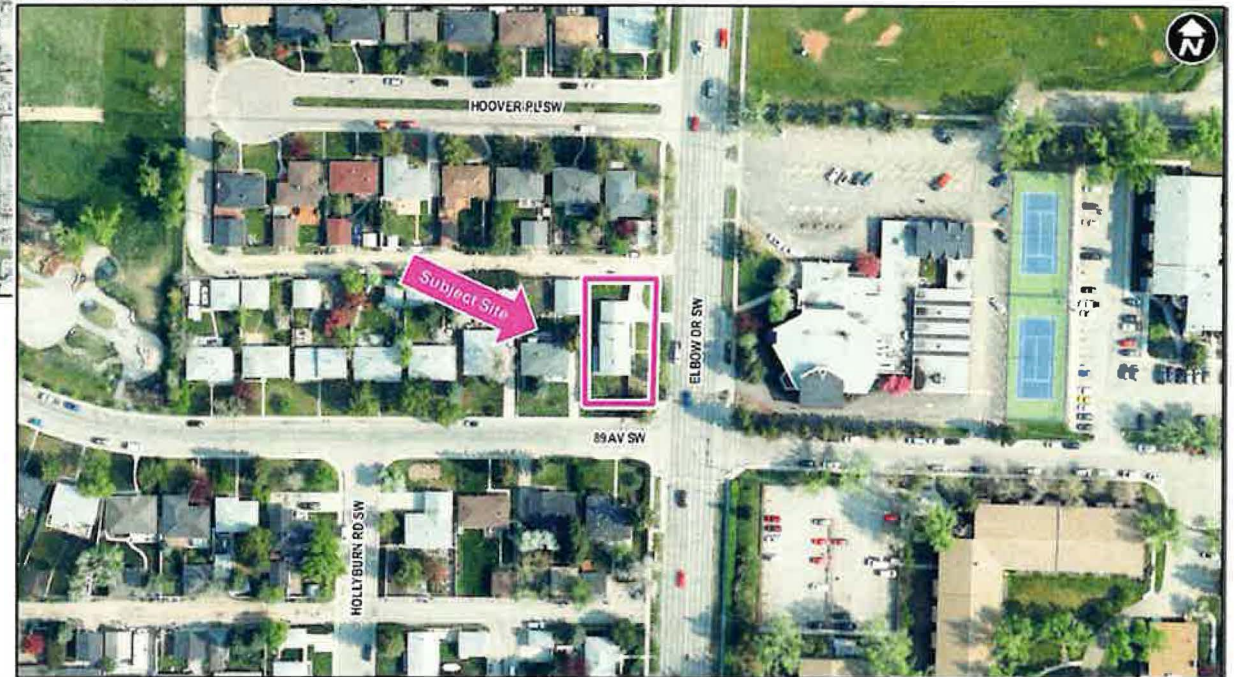
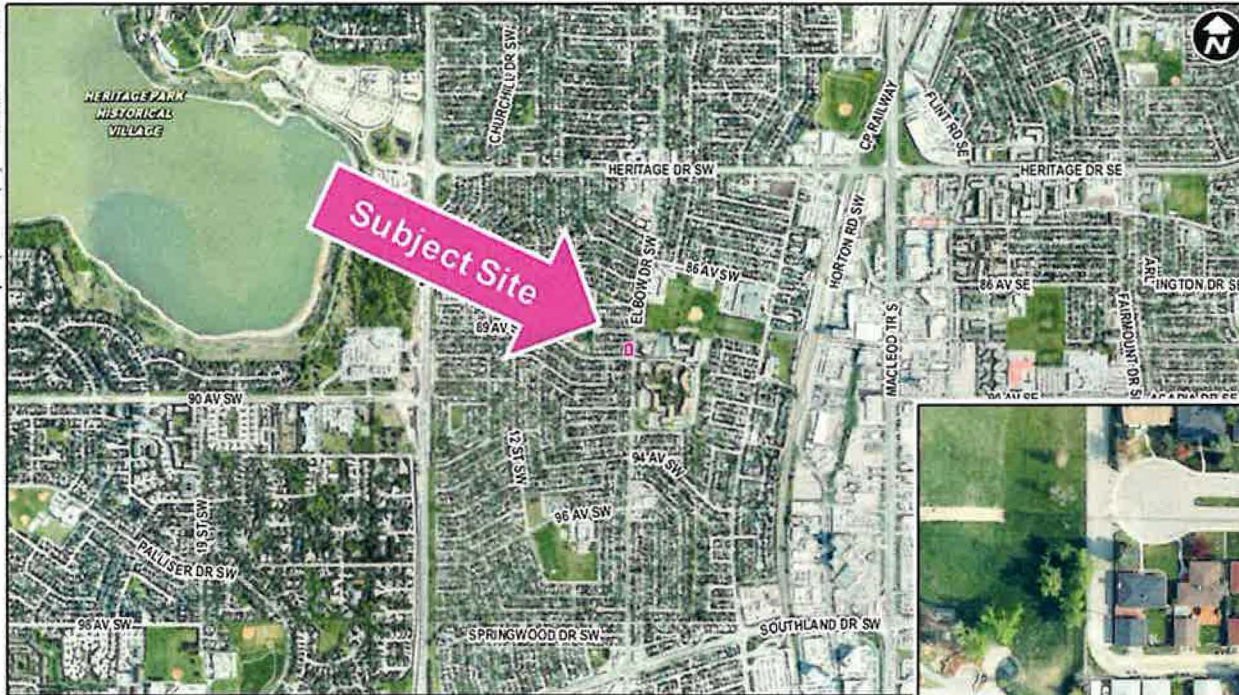
# Calgary Planning Commission

## Agenda Item: 7.2.4

### LOC2020-0129

### Land Use Amendment

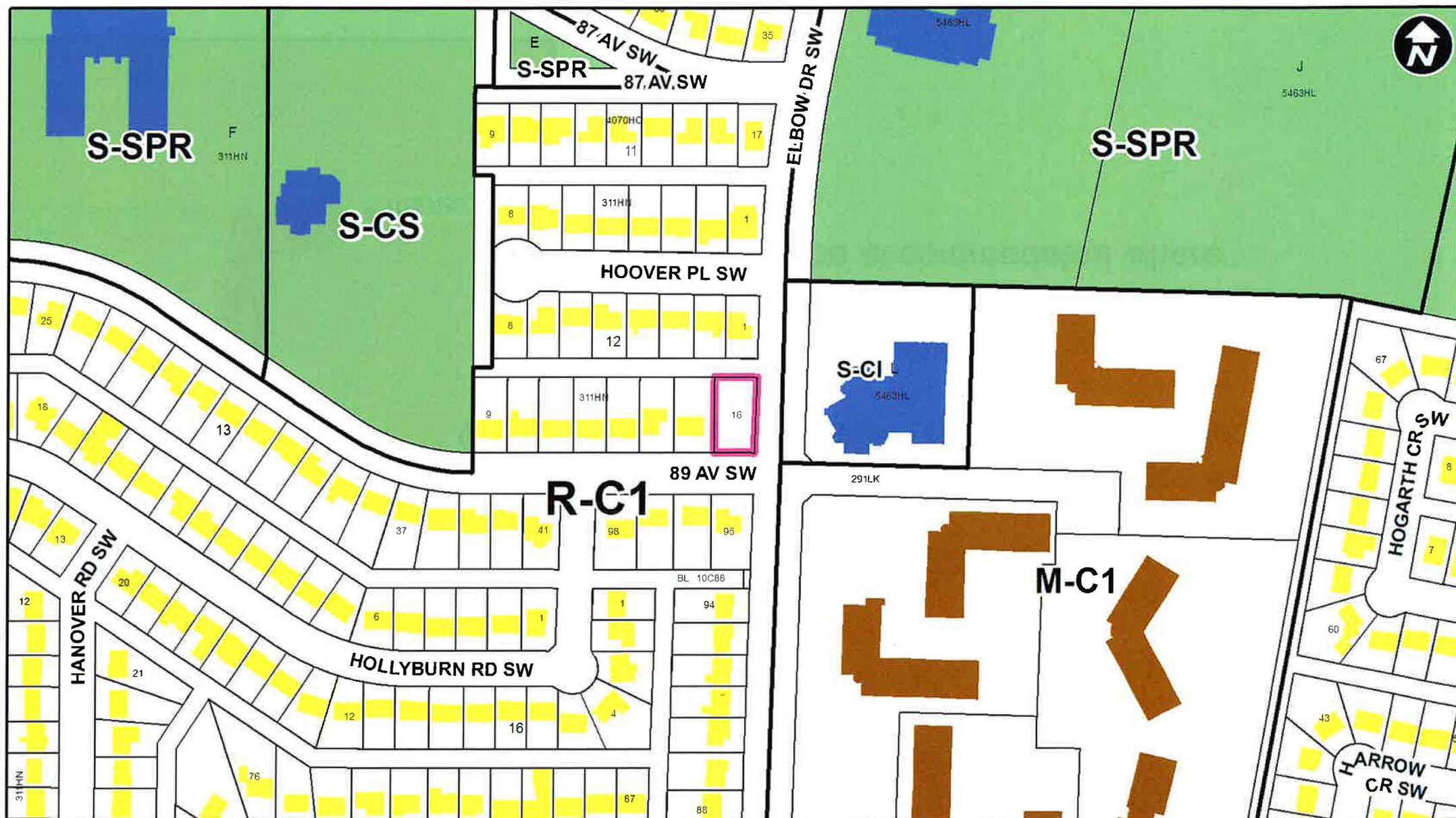




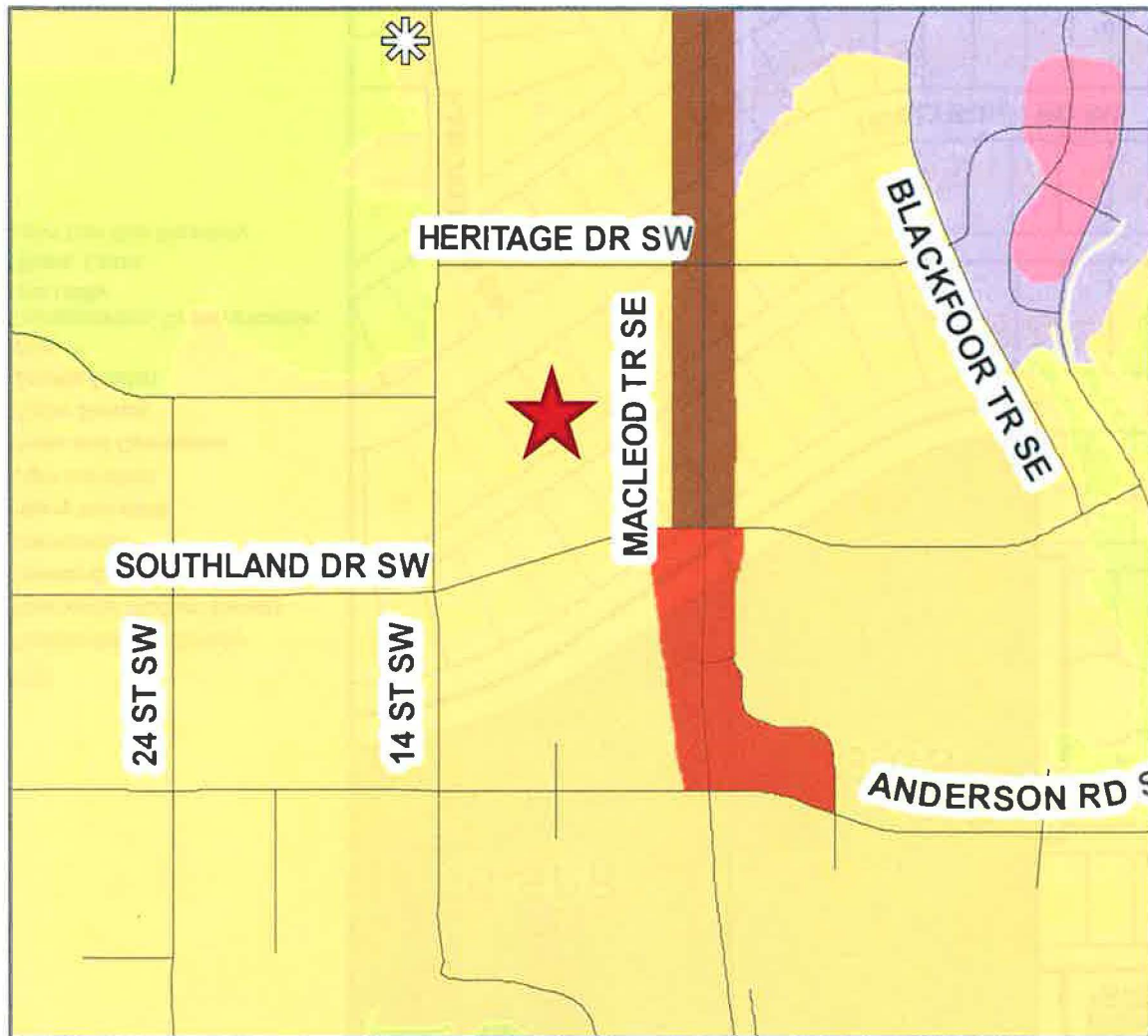


LEGEND

- Residential Low Density
- Residential Medium Density
- Residential High Density
- Commercial
- Heavy Industrial
- Light Industrial
- Parks and Openspace
- Public Service
- Service Station
- Vacant
- Transportation, Communication, and Utility
- Rivers, Lakes
- Land Use Site Boundary



# Municipal Development Plan



## Developed Area – Established

Modest redevelopment encouraged that respects the scale of the neighbourhood.

Recognition that child care service is an integral element of complete communities and should be accommodated where appropriate.



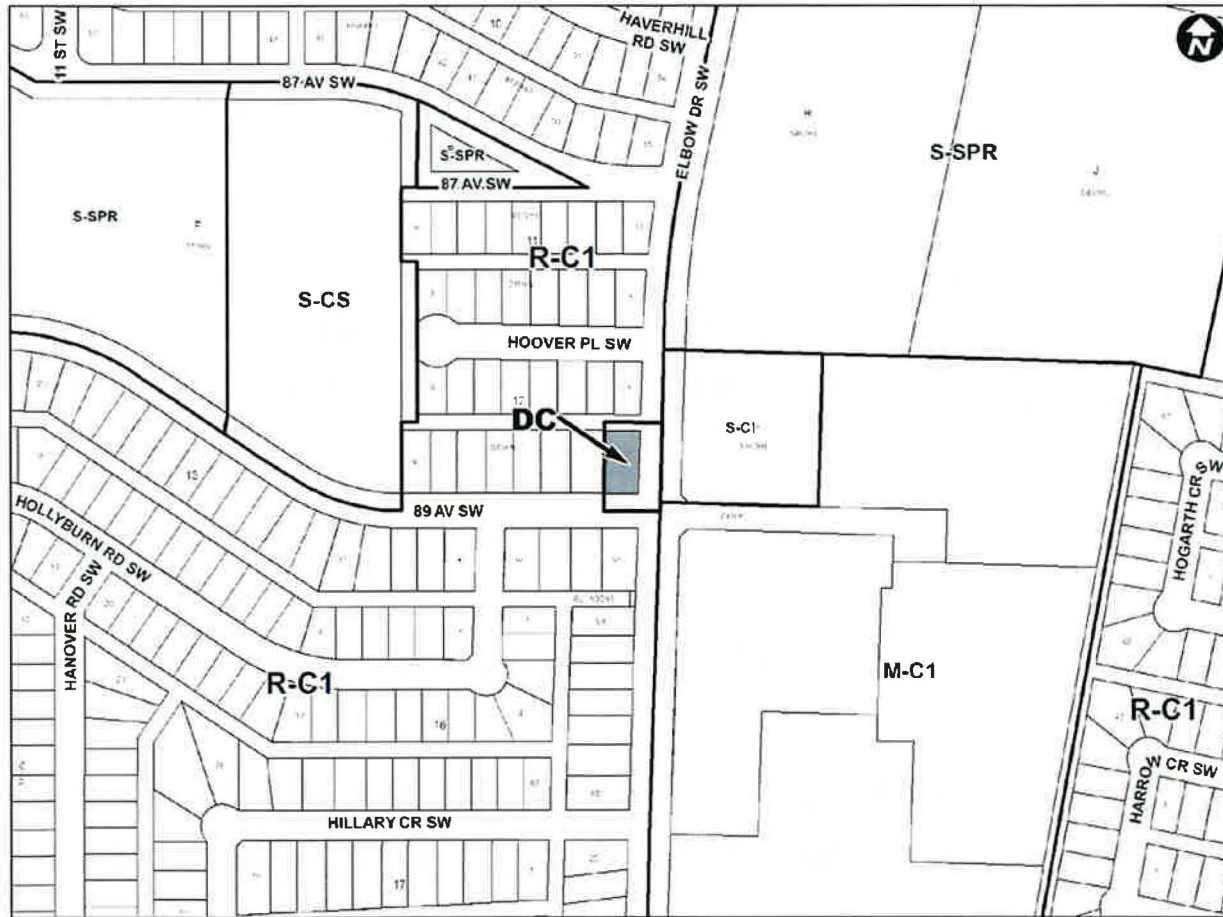
## Child Care Service Policy and Development Guidelines

The *Calgary Child Care Service Policy and Development Guidelines* is a non-statutory document intended to guide the location and development of child care services within the city.

The document contains location criteria which includes:

- located on a corner site;
- located on a collector street;
- located near an activity area such as schools, parks and community association buildings;
- large enough to accommodate outdoor play areas; and
- ability to accommodate parking on-site and pick-up, drop-off.

The policy also states that a DC district based on the low density district, with the added use of Child Care Service as appropriate in many locations.



### Proposed Direct Control District

- Retain all uses and rules of the RC-1 District
- Additional discretionary use of Child Care Service











Corporate Planning Applications Group  
recommends approval of this application

*- thank you*