



Lifting Specific Use Restrictions in the Airport Vicinity Protection Area (AVPA)

PUD2021-0325

SPC on Planning and Urban Development

April 7, 2021

ISC: Unrestricted





Why We Are Here

Noise Exposure Forecast (NEF) areas are an indicator of noise impacts used to guide decision making in land use compatibility.

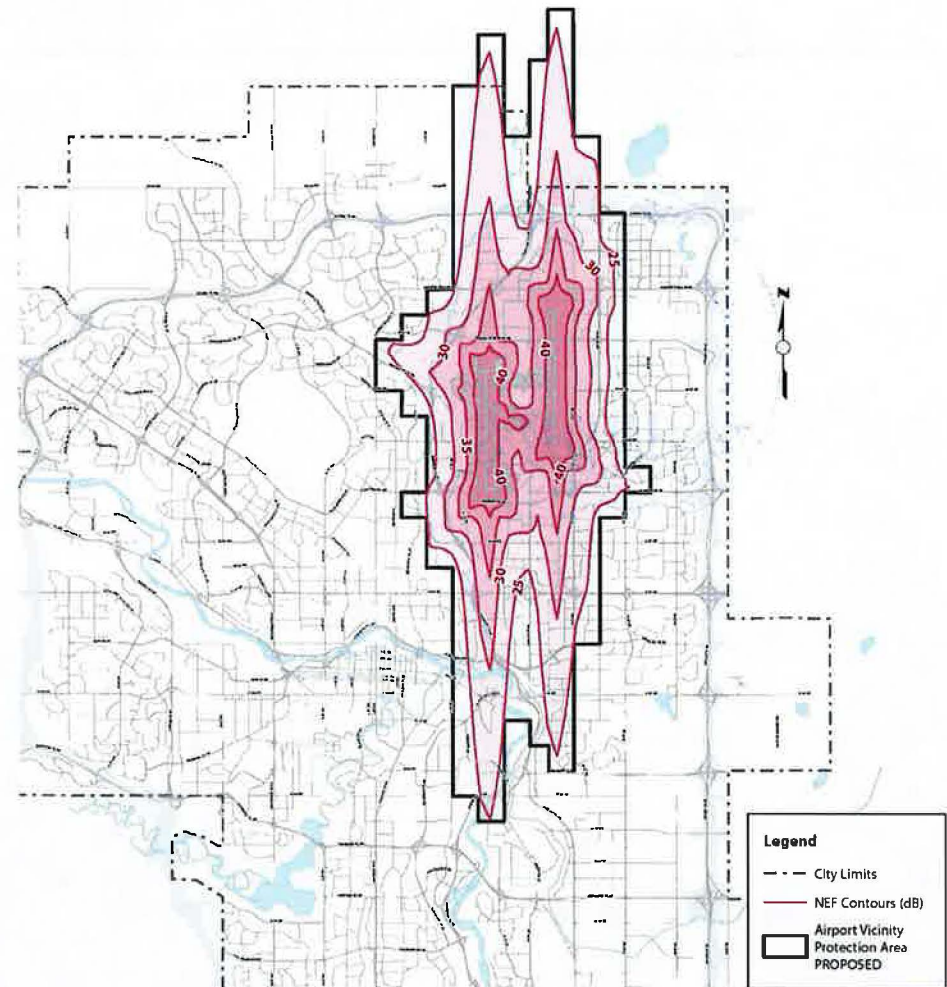
2020 September 14

Council decision made to request the Province update Noise Exposure Forecast (NEF) Contours to reflect noise impact changes with new technologies in aviation

Today – Council Direction Response

Proposal to allow Places of Worship and Halls and Auditoriums to locate in the NEF35 area

Proposed - NEF Contours and AVPA Boundary





Halls & Auditoriums and Places of Worship Currently Prohibited

The following uses are not allowed in certain Noise Exposure Forecast Areas:

| Land Use (New Developments) | NEF 25-30 | NEF 30-35 | NEF 35-40 | NEF 40 + |
|-------------------------------------|------------|------------|------------|------------|
| Residences | - | Prohibited | Prohibited | Prohibited |
| Schools | - | Prohibited | Prohibited | Prohibited |
| Daycares | - | - | Prohibited | Prohibited |
| Clinics | - | - | - | Prohibited |
| Medical Care Facilities | - | Prohibited | Prohibited | Prohibited |
| Halls & Auditoriums | - | - | Prohibited | Prohibited |
| Place of Worship | - | - | Prohibited | Prohibited |
| Outdoor Eating Establishments | - | - | - | Prohibited |
| Outdoor Exhibition & Fairgrounds | - | - | Prohibited | Prohibited |
| Outdoor Spectator/Sports Facilities | - | - | Prohibited | Prohibited |
| Campgrounds | Prohibited | Prohibited | Prohibited | Prohibited |



Engagement

Objective:

Build understanding on the proposal and stakeholder perspectives on the effects of the change.

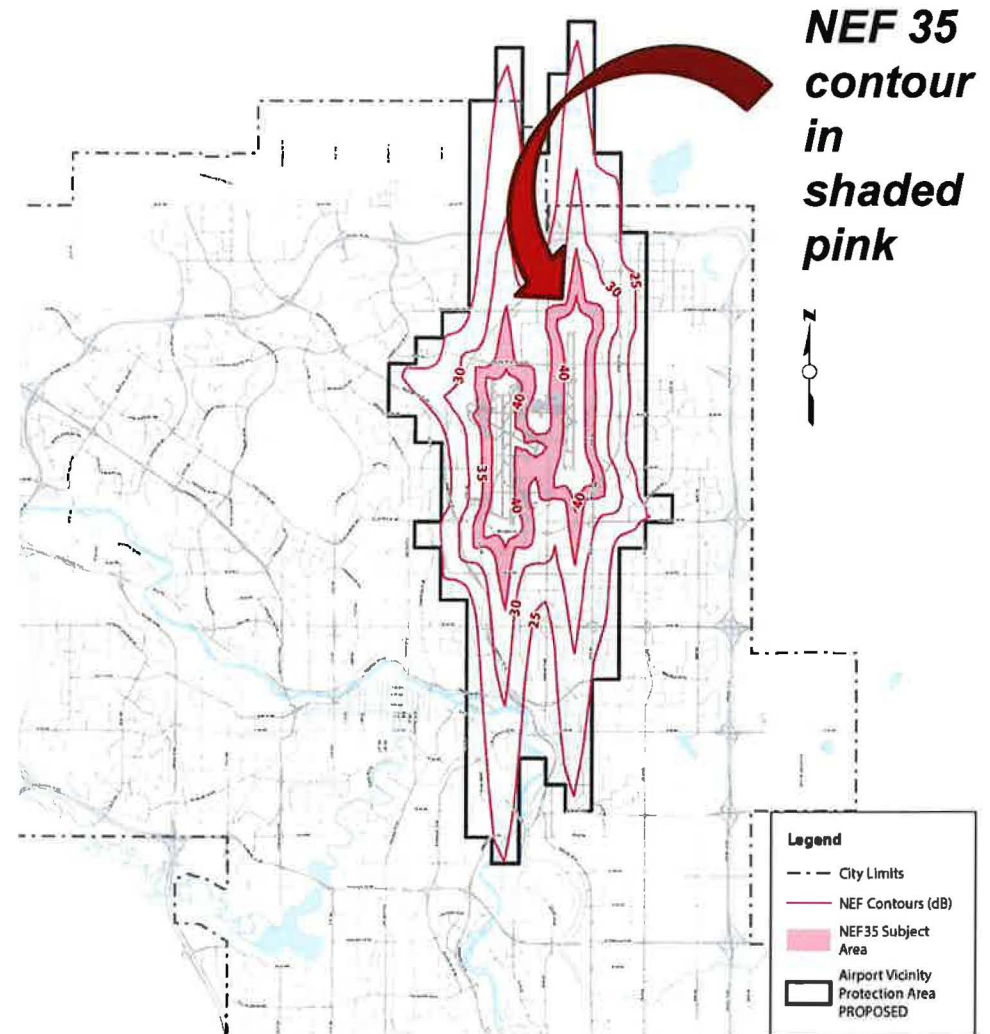
Response Themes:

| Theme | Description |
|---------------------------------------|--|
| Benefits to faith-based organizations | The changes will make it easier for faith-based organizations to find space for their facilities and will give them greater flexibility when expanding. |
| Benefits to communities | The proposed changes will benefit neighbouring communities, bringing facilities covered by the change closer to where people live. |
| No impact | Will not likely see an impact from the proposed changes. |
| Business impacts | The increase in uses may create increased competition for rental spaces, but may also mean increased exposure for local businesses due to increased traffic. |



Why Lift Restrictions in Noise Exposure Forecast 35?

- Helps right size the regulation
- Makes it easier to find locations for Places of Worship and Halls and Auditoriums in northeast Calgary
- Creates additional development opportunities by allowing these uses in all contour areas except NEF40
- Noise can be mitigated through building construction and design





Recommendation

That the Standing Policy Committee on Planning and Urban Development recommends that Council support by resolution the proposed Calgary International Airport Vicinity Protection Area Regulation amendment provided in Attachment 2, and direct Administration to submit a joint amendment application with the Calgary Airport Authority to the Minister of Municipal Affairs.