

The surrounding park space has been a place where the community has and continues to recreate...

- *Improve the quality and variety of the park amenities and playground equipment;*

North Hill LAP, 3.2.1.3, Page 58

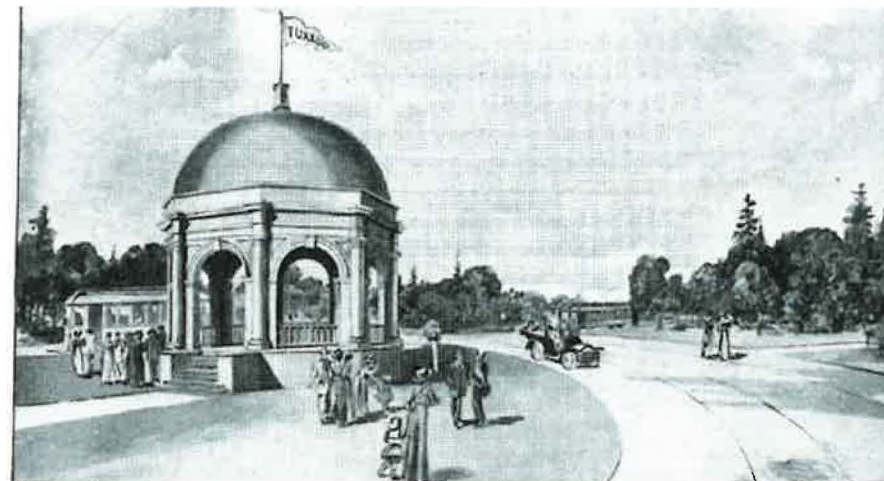
- *Explore uses that promote year-round outdoor site activation (i.e. winter); and*

g. Enhance the functionality of community

- *facilities and spaces through the inclusion of infrastructure such as lights, electricity, water, and washrooms to encourage multi-purpose use that is accessible for all.*

North Hill LAP, 3.2.1.1, Page 57

BANK FUND		Amount
Bank Bal. Dec. 17th 1947		43.25
Jun/48 Receipts	Nil	
Feb From Gen. Fund	44.00	
Carnival Proceeds	42.25	86.25
		\$129.50
Electric Light Meter Deposit	24.00	
	\$ 153.50	
REGISTERED		
APR 1 1948		
THE REGISTRAR OF		
JOINT STOCK COMPANIES		
Disbursements		
Electricity	Stamps & Stationery	Equipment
5.60	15.47	.80
TURN ON X	16.47	32.46
16.00	5.60	31.94
		33.26

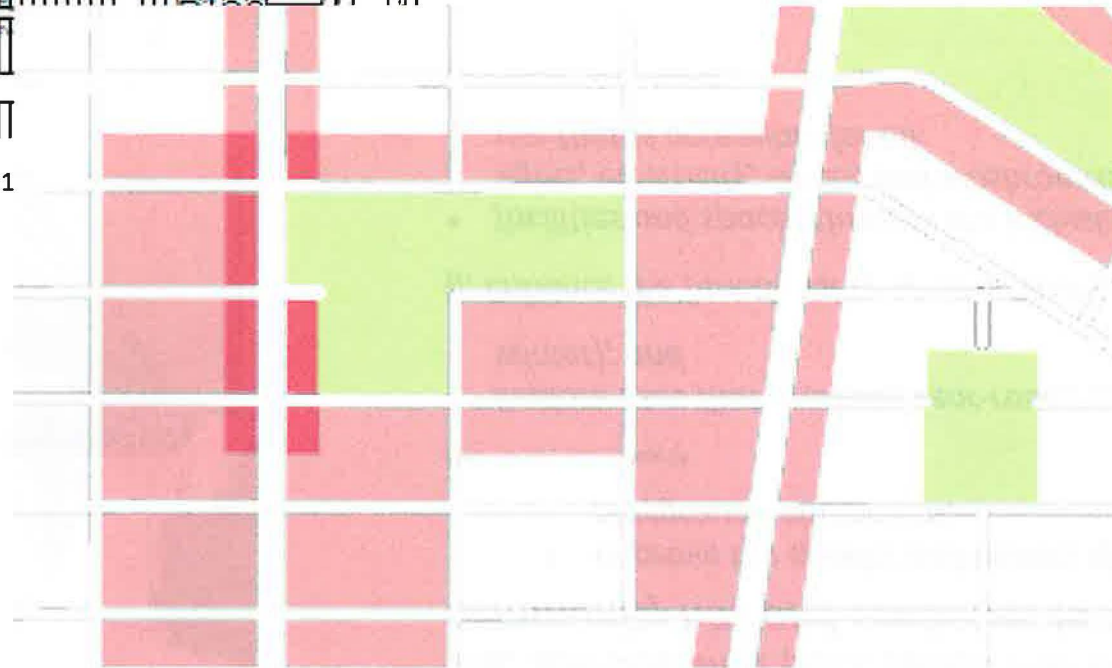


CITY OF CALGARY
RECEIVED
IN COUNCIL CHAMBER
MAR 22 2021
ITEM: <u>H8.2.2 PCD2021-0030</u>
<u>Public</u>
CITY CLERK'S DEPARTMENT







Land Use Districts Section 27C February 23, 2021



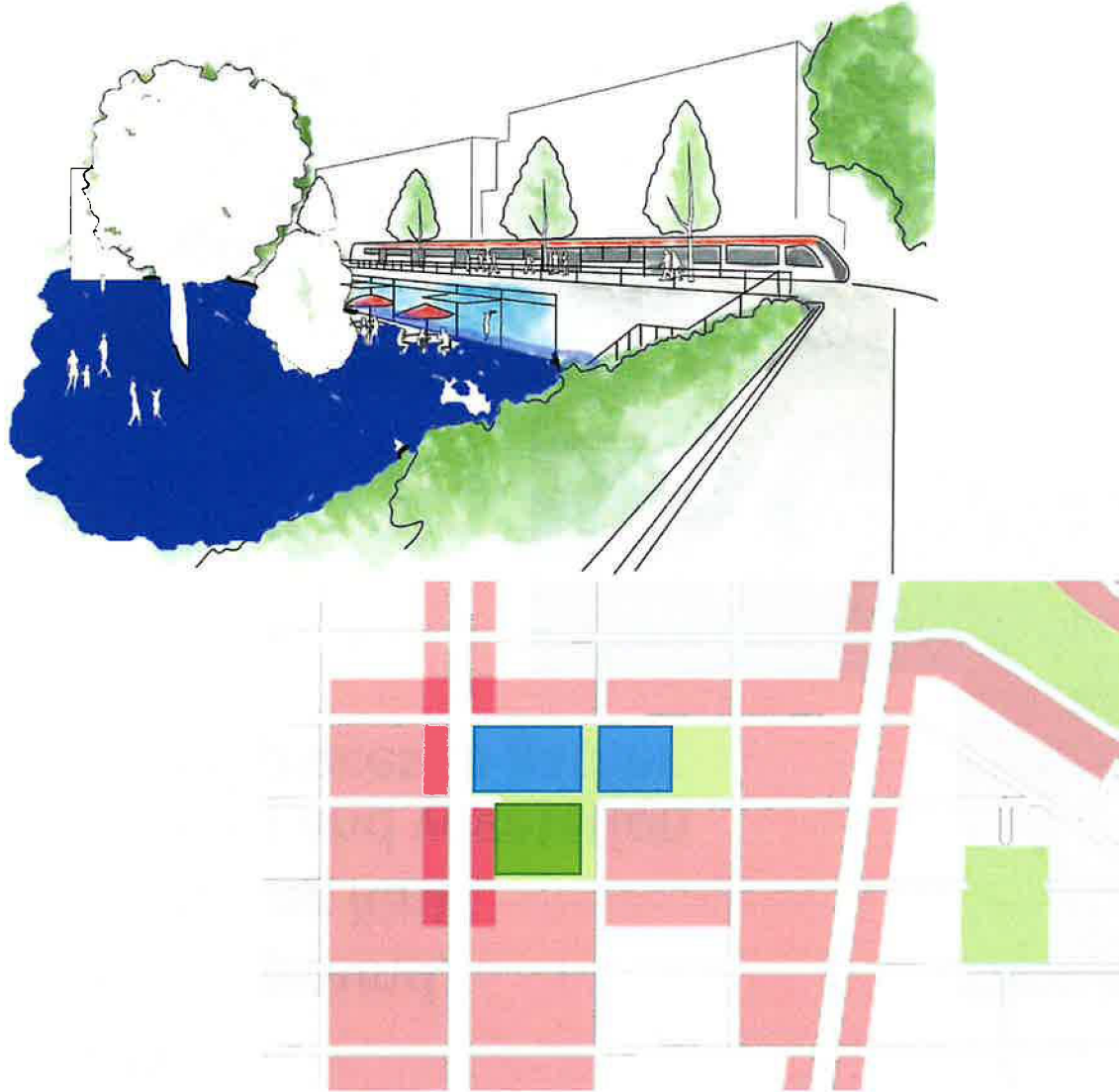
Map 4:
Building Scale

Legend

-  No Scale Modifier
-  Limited
(up to 3 Storeys)
-  Low
(up to 6 Storeys)
-  Mid
(up to 12 Storeys)

North Hill Communities LAP p.31





- Need for stormwater improvements known since 2010.
- Raised in 2018 at start of LAP process.
- 3 Hectares of city park space in community
- Other park land in community tied to Tuxedo Park School (surplus), and St. Pauls School (administrative building) and Balmoral School.
- Pedestrian safety issues continue to prevent access



- Top draws of the park:

- Playground,
- Skating Rink,
- Trees and vegetation and places to gather



- “I am saddened to hear the pathway and playground structure will be removed. The pathway running parallel to 1st St is an important bridge across the park and sees frequent use for both recreation and commuting. The playground is used by children aged 1-92 and is the only play structure in the community. Though I understand the intent is for these removals to be temporary and this drainage initiative an interim arrangement, 'temporary' and 'interim' are relative. To put it differently, one summer without a playground is acceptable, but the long-term removal would be a detriment to the community and its members.”

Adam, Tuxedo Park Resident



- Supporting growth needs to match with what has been presented and pitched.
- There is a role that only the City can provide when it comes to connectivity, parks, and transportation.
 - A developer can't pay for a crosswalk, just as much as a community association can install a speed bump.
- The dry pond works in Tuxedo Park is failing to meet the proposed LAP.
- “This is city land”, “We have a timeline to meet” goes at odds with “The need to reinvigorate Tuxedo Park”
- A community of over 5100 people should not see Change end up being left with One playground.

Q3. Will any recreation facilities or parkland be lost?

A. No. Anything that existed before can be replaced to its original or better than original status after the dry pond is built.

City of Edmonton Dry Pond Common Questions And Answers

