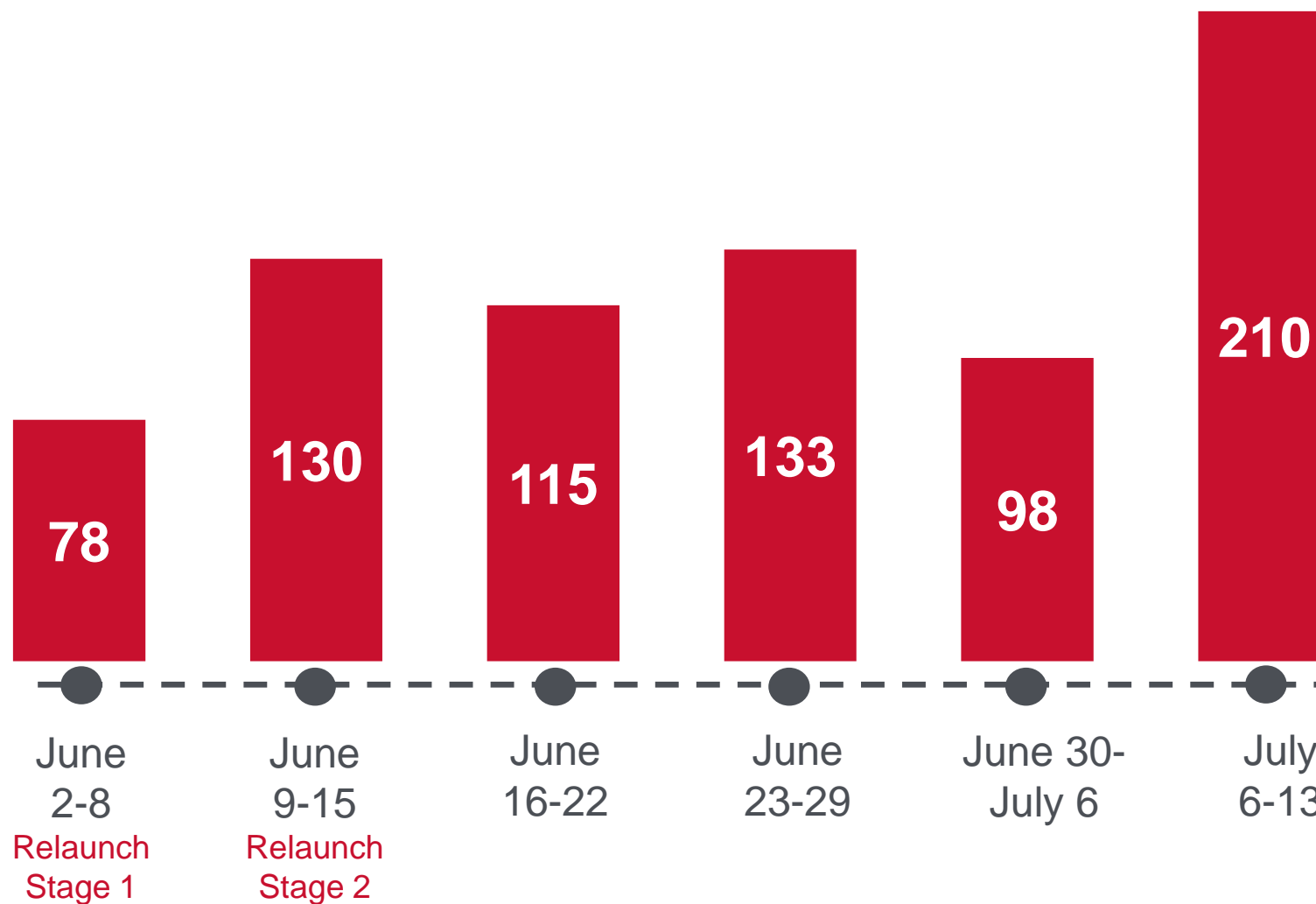
A wide-angle photograph of the Peace Bridge in Calgary, Alberta, Canada. The bridge's distinctive red, curved steel arches are in the foreground, leading the eye towards the city skyline across the Bow River. The sky is blue with scattered white clouds, and the water reflects the light. A few people can be seen walking on the bridge deck.

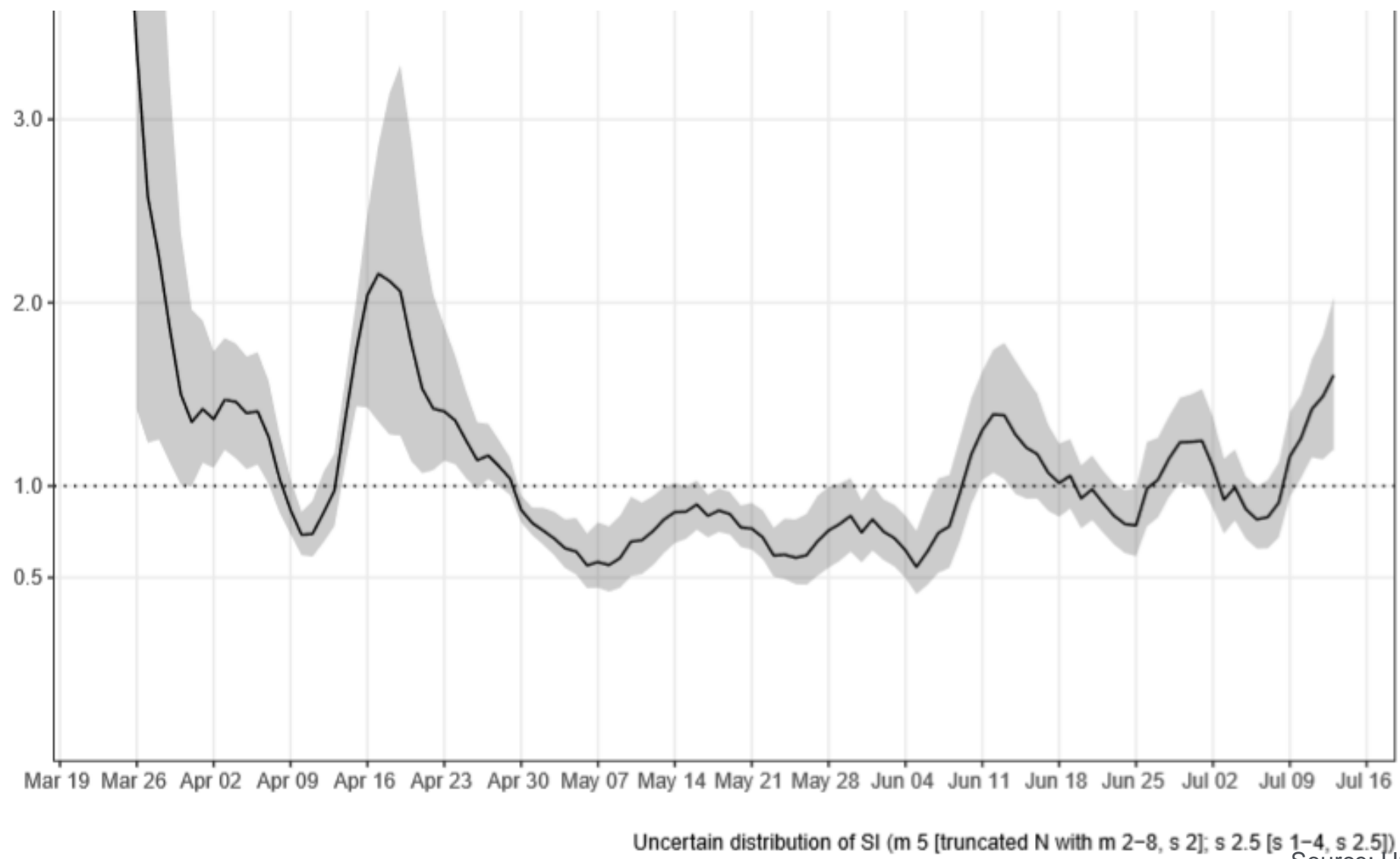
Mandatory Face Coverings: C2020-0845

Presentation to Combined Council Meeting
2020 July 20

New Weekly COVID-19 Cases – Calgary Zone

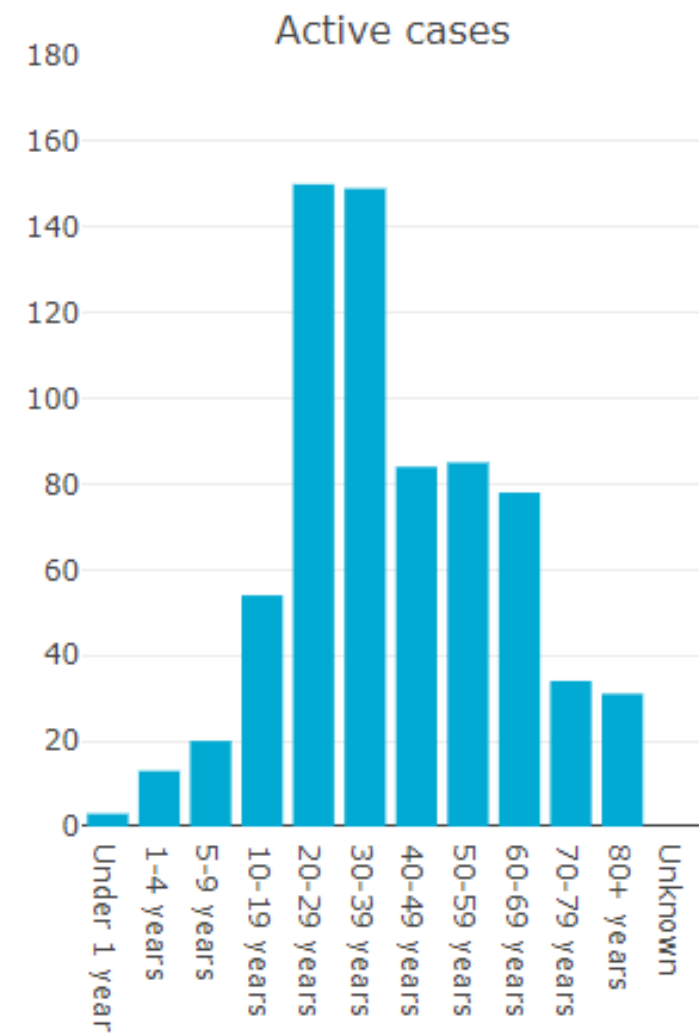
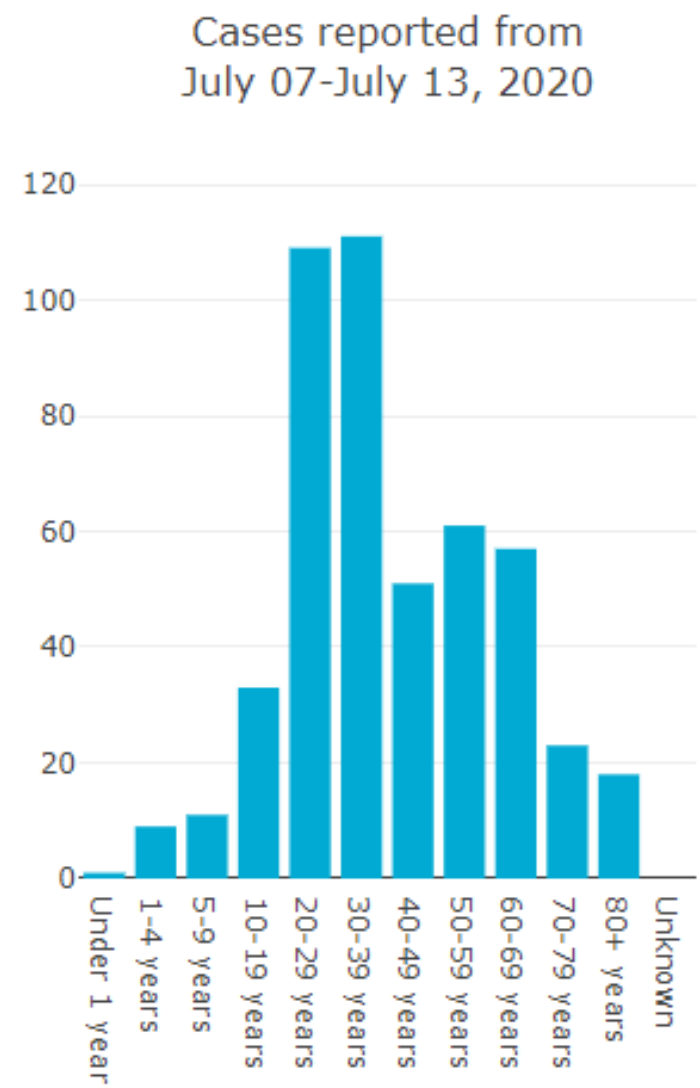


Reproductive Value – Calgary Zone



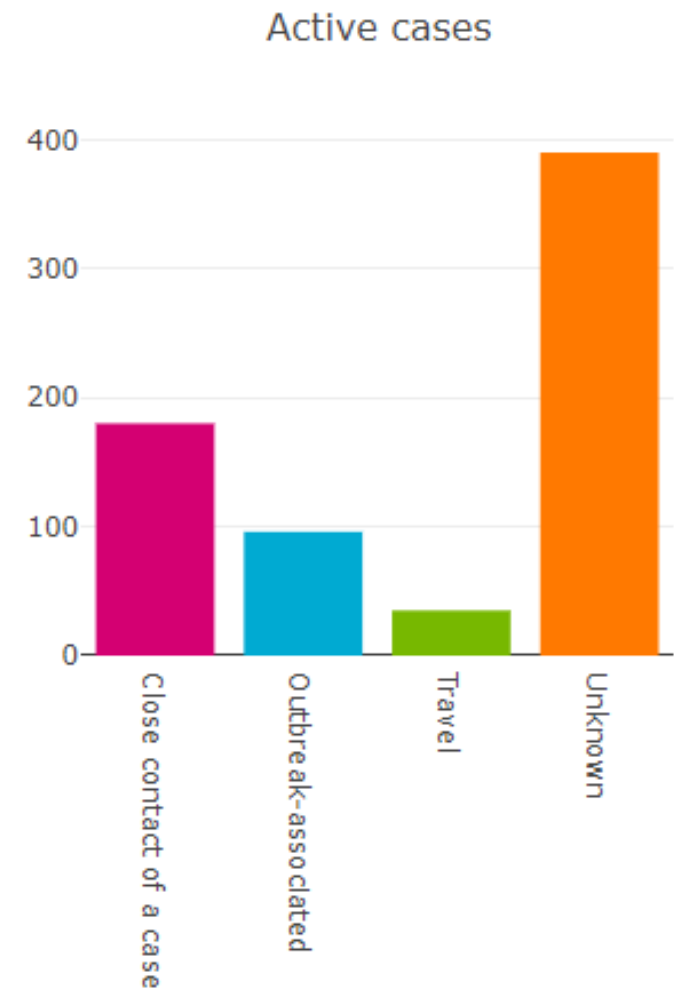
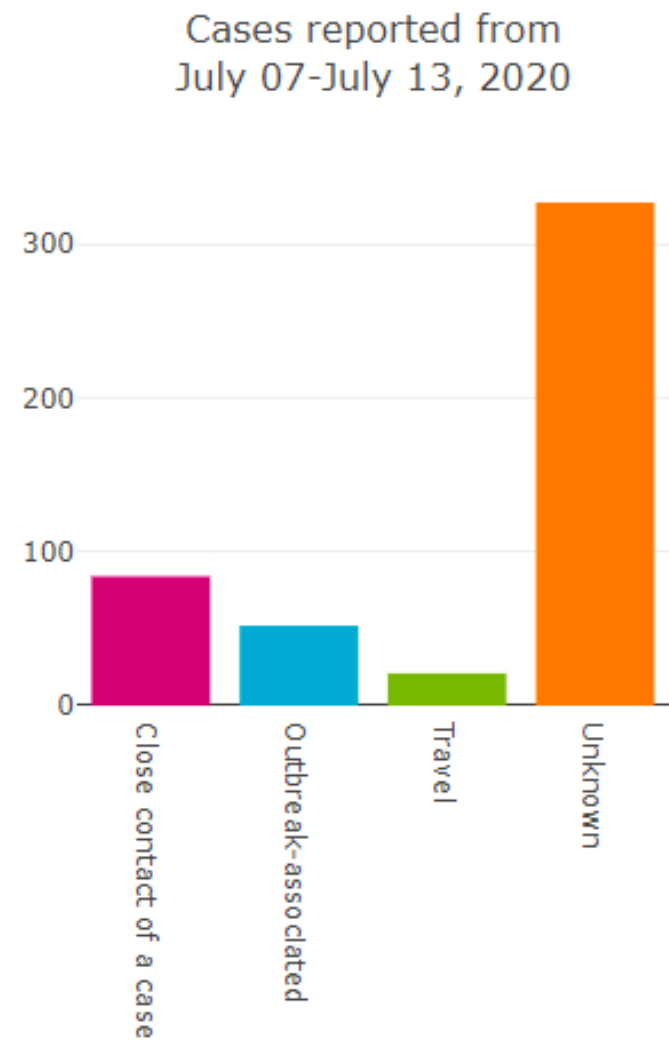
Source: University of Calgary

Shifting Demographics



Source: Alberta Health

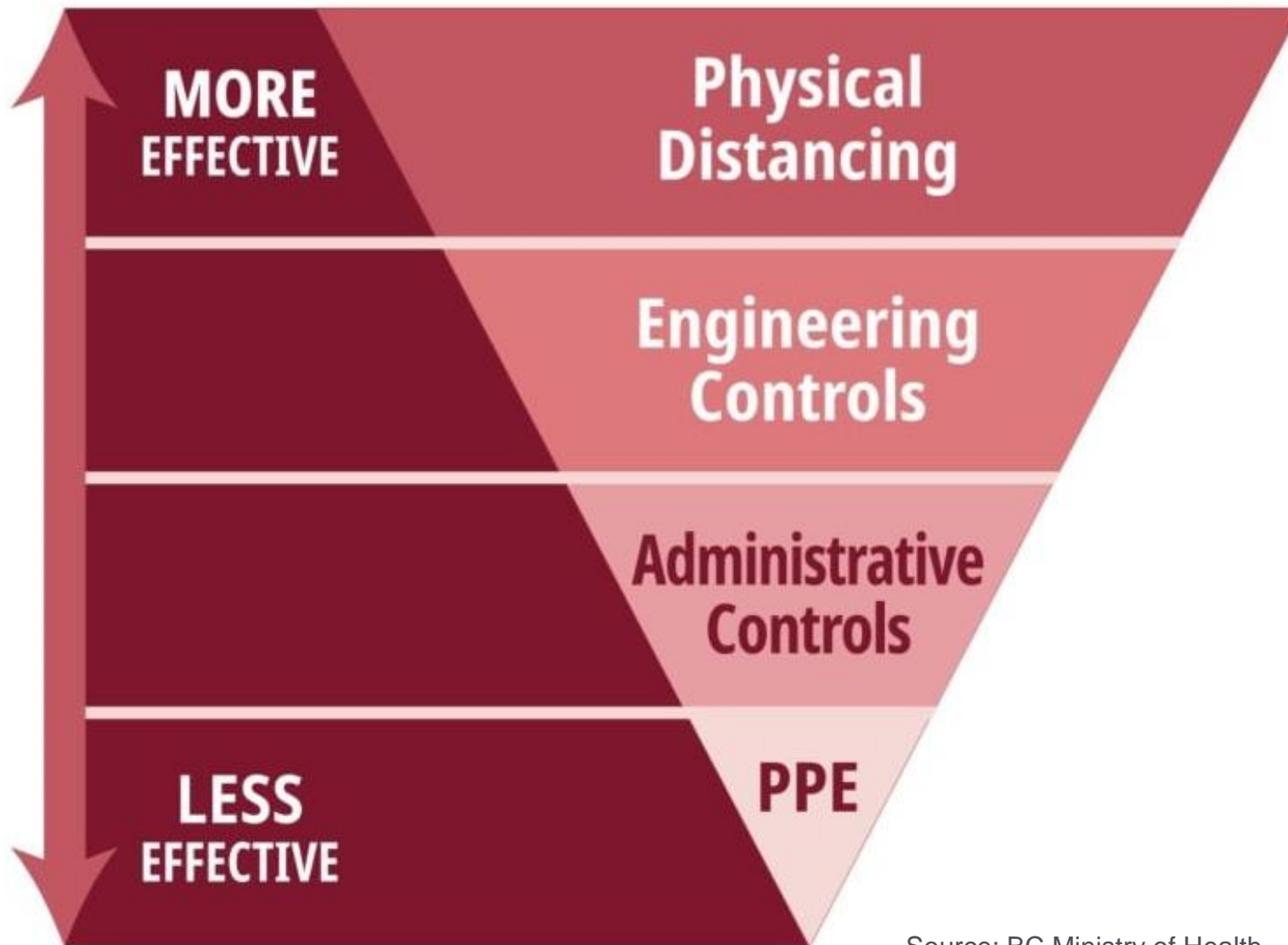
Unknown Transmission



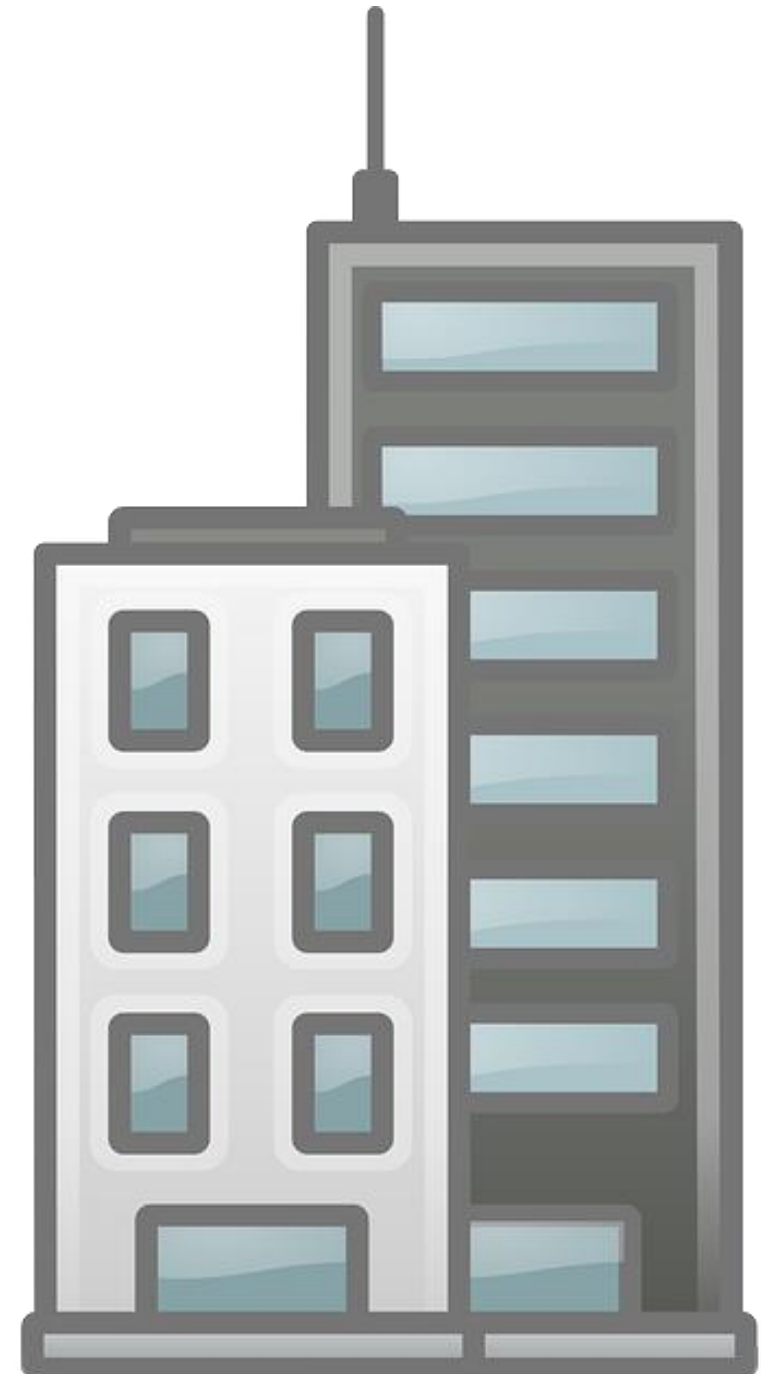
Source: Alberta Health



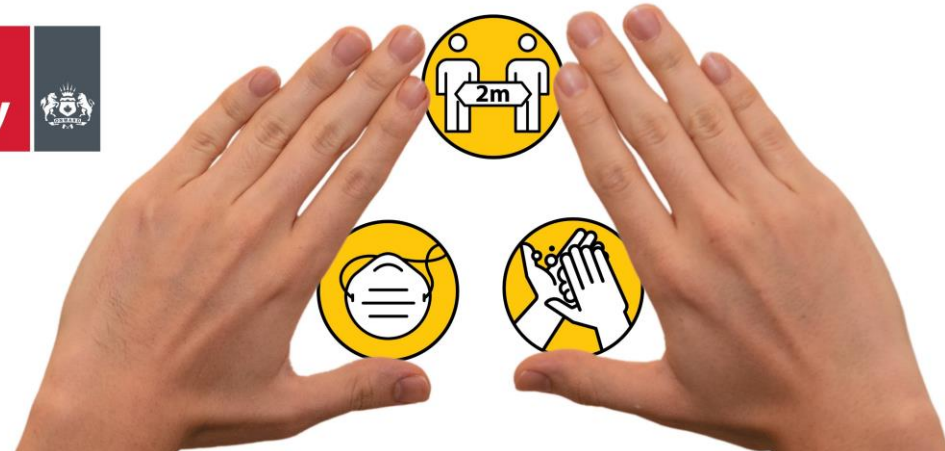
Responding to Risk



Source: BC Ministry of Health



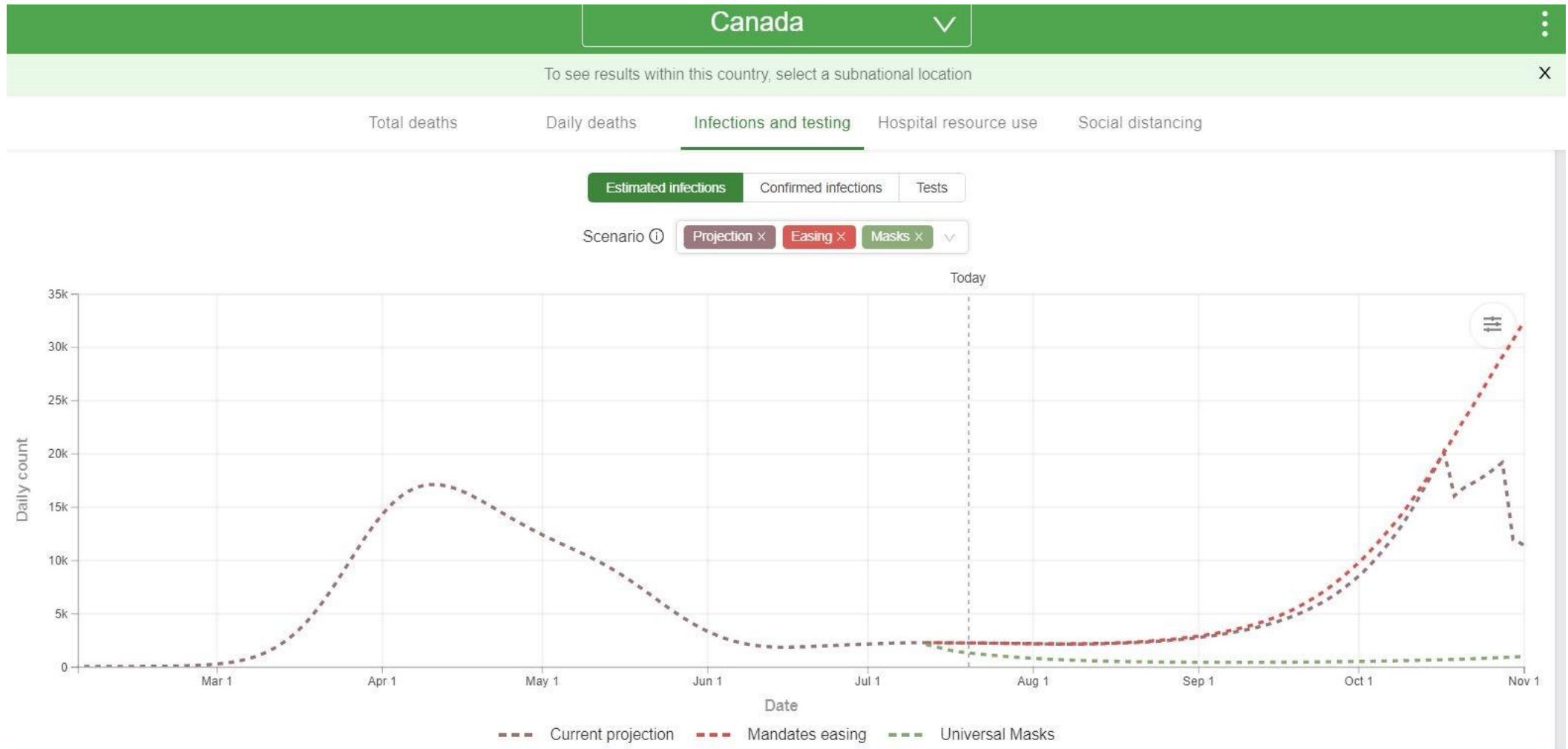
Staying Open is Everyone's Responsibility



⚠ 您的配合能帮助维持社会的正常运转

⚠ ਖੁੱਲੇ ਰਹਿਣਾ ਤੁਹਾਡੇ ਹੱਥਾਂ ਵਿੱਚ ਹੈ

The Institute for Health Metrics and Evaluation (IHME)



<http://covid19.healthdata.org/canada>

Masks

(Non-medical face coverings)

Outline

Measures we have to slow the spread

Masks – evidence

One more thing...

Measures to slow the spread

Stay home when you're sick

Stay 2m apart

Wash / sanitize your hands

Outdoors rather than indoors

Limit time of exposure

Masks

Evidence: Individual

Evidence: Community

Evidence: Policy

One more thing...

Summer break?

Schools

The economy

What We Heard



34% always wear a face covering in public



63% would feel safer if face coverings were mandatory on Transit



74% support making face coverings mandatory

Impacts of Mandatory Face Coverings



Increases usage

Lowers transmission

Substitutes need of a lockdown

Reference

Hatzius, J., Struyven, D., & Rosenberg, I. (2020). *Face Masks and GDP*. Goldman Sachs Research.

<https://www.goldmansachs.com/insights/pages/face-masks-and-gdp.html>

Mandatory Face Coverings



Transit Vehicles



City-Owned
Property



All Indoor Public
Spaces

ADMINISTRATION'S RECOMMENDATION

That Council:

- 1) **Mandate the wearing of face coverings on all transit vehicles** effective 2020 August 1 and direct Administration to develop an implementation plan;
- 2) Direct the City Manager to develop and implement a data-driven policy for if and when to **mandate face coverings in all indoor City-owned or operated properties**; and
- 3) Direct Administration to report back to Council in September with a **strategy for managing a second wave of COVID-19; including a proposed face coverings bylaw to define staged phases and triggers**, similar in form to the current water restrictions phases in the Water Utility Bylaw.



Background Slides



Draft Bylaw Overview

Prohibition

- A person must wear a *face covering* in a *public premises* or a *public vehicle*, unless the person is separated from other persons by an installed screen, shield or other barrier
- An *employer, operator* or *proprietor* must prominently display a sign in a location that is visible to a person immediately upon entering the *public premises* or *public vehicle*



Face covering REQUIRED

All persons must wear a face covering in an indoor public premises or a public vehicle.

The City of Calgary Bylaw 26M2020



Exceptions include children under two years of age, or persons with an underlying medical condition or disability which inhibits their ability to wear a face covering.

Visit calgary.ca/covid19 for more information.



Draft Bylaw Overview

Definitions

Public Premises means all or any part of a building, structure or other enclosed area to which members of the public have access as of right or by express or implied invitation but excludes any premises for which there is an enrolment or membership requirement in order to access it

Public Vehicles means a bus, light rail transit (LRT) vehicle, taxi or other vehicles that is used to transport members of the public for a fee

Exceptions

Does not apply to:

- **Children under 2 years of age;**
- Persons with an **underlying medical condition or disability** which inhibits their ability to wear a face covering;
- Persons who are **unable to place, use or remove a face covering safely** without assistance;
- Persons who are **eating or drinking at a public premises** that offers food or beverage services;
- Person **engaging in an athletic or fitness** activity;
- Persons who **are caregiving for or accompanying a person with a disability** where wearing a face covering would hinder the accommodation of the person's disability;

Water Utility Bylaw 40M2006

SCHEDULE “E” – OUTDOOR WATER USE RESTRICTIONS

| Activity | Application Method | Application By | Stage One | Stage Two | Stage Three | Stage Four |
|--|--|--------------------------------|---|---|-------------|-------------|
| Watering of lawns, gardens, trees and shrubs | Irrigation with hose connected sprinkler | All Customers except | One day per week to a maximum of 2 hours per day within the hours of 0400h to 0700h, 0900h to 1100h or 1900h to 2200h (based on a Schedule as determined the Director , Water Resources) | One day per week to a maximum of 1 hour per day within the hours of 0400h to 0700h, 0900h to 1100h or 1900h to 2200h (based on a Schedule as determined the Director, Water Resources) | Not Allowed | Not Allowed |
| | | The City of Calgary Operations | Not Allowed | Not Allowed | Not Allowed | Not Allowed |

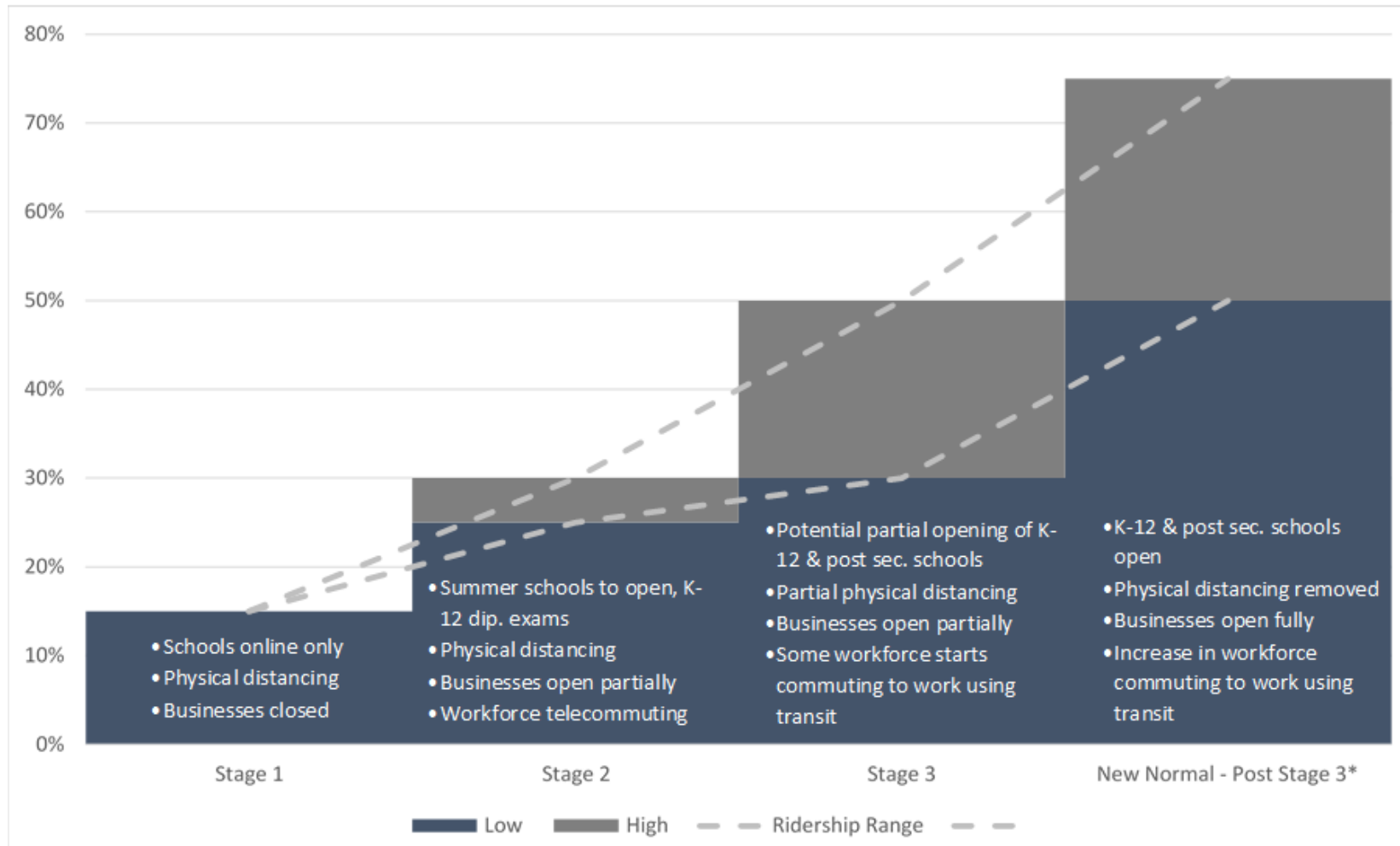
Calgary Transit Revenue

Calgary Transit's revenues have been impacted by COVID-19:

- Carrying 25% of normal ridership (up from 10% in early April)
- Demand for reserved parking stalls is non-existent

Reduced costs from service reductions result in a net budget gap of \$59M

Calgary Transit Recovery



Customers are more comfortable riding transit if they see other customers wearing face coverings