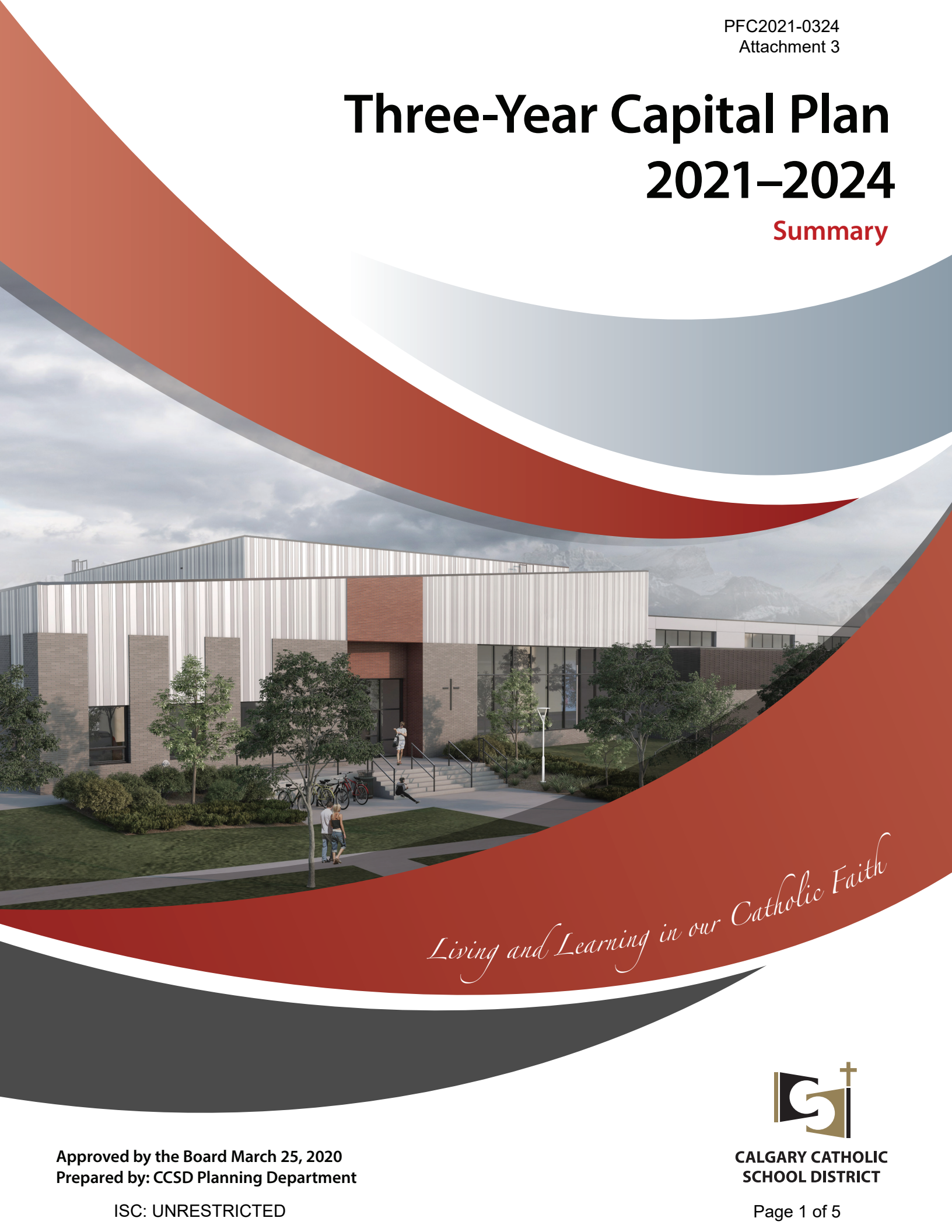


# Three-Year Capital Plan 2021–2024

Summary



*Living and Learning in our Catholic Faith*



## Introduction

The Calgary Catholic School District (CCSD) 2021-2024 Capital Plan consideration includes requests for a total of 20 projects comprised of the following:



**7**

New elementary or elementary/junior high schools (some to support additional specialized programming needs)



**2**

High school additions/modernizations and enhancements



**3**

Innovative high schools in Calgary (including the Extended Learning Centre)



**8**

Major modernization requests

These capital priorities are revisited annually, based on growth/development trends, allowing the district to respond to emerging opportunities. CCSD strives to ensure success for all students through student accommodation, partnerships and a strengthened sense of community within the district.



**Current Enrolment over 58,300 Students**

*(CCSD internal student count as of March 1, 2020)*

The district continues to experience upward enrolment pressures, though not as aggressive as previous years, in Calgary and surrounding areas such as Airdrie, Cochrane, Chestermere, Rocky View County and the M.D of Bighorn. Each of these projects contribute to the success of the district and success of the students that embark on their education through our programs and guidance. Outlined in this summary, CCSD seeks to meet the expectations of quality education for the student and families that we serve, on behalf of the Alberta government.

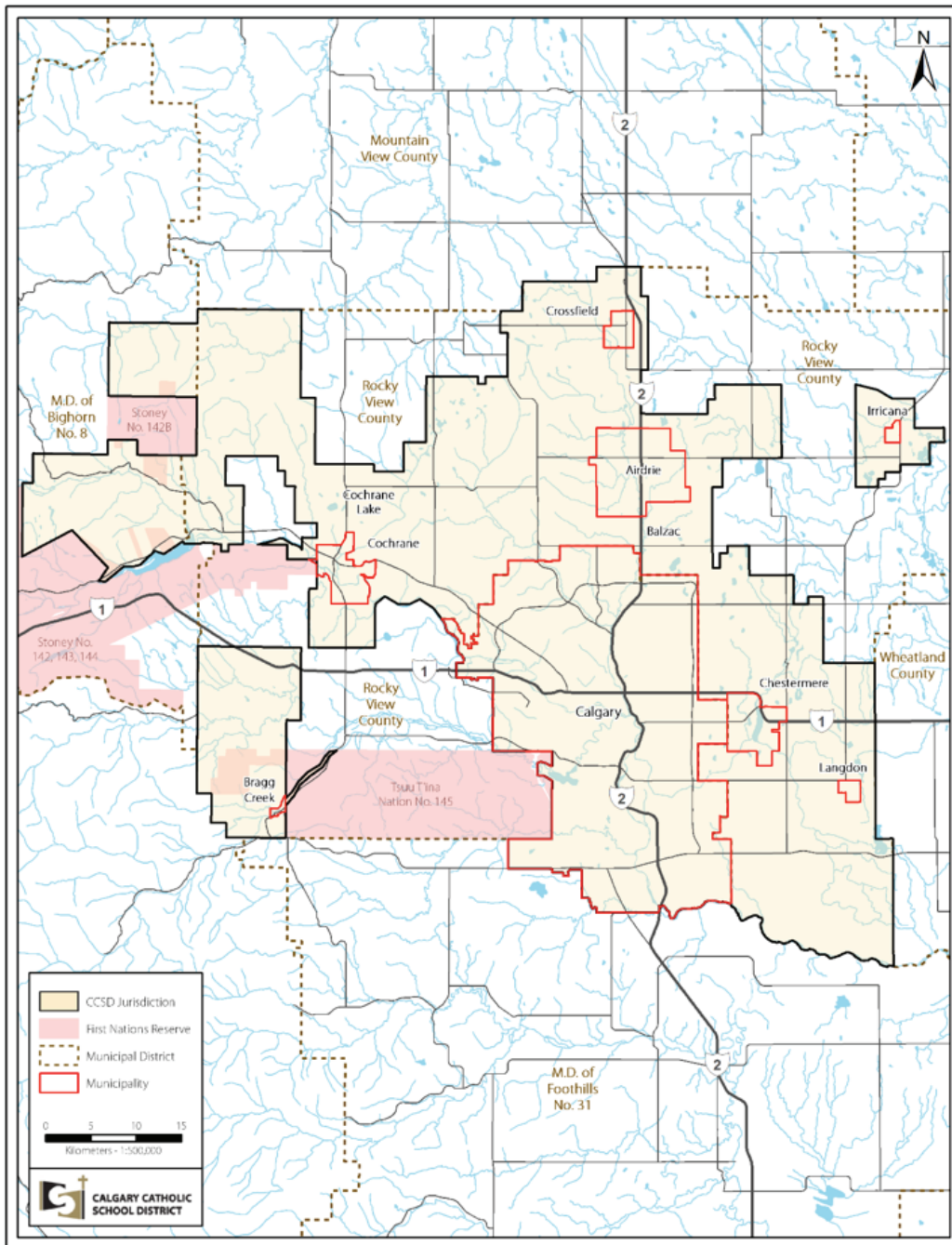
## Objectives for the Capital Plan

The key objectives that emerged from our most recent Senior Administrative strategic planning visioning session will guide the delivery of projects. The objectives for assessing each project are to:

- Create optimal learning environments for all students
- Explore growth opportunities where possible
- Remain agile and assess dynamic changes in the educational environment, capitalizing on opportunities and partnerships
- Evaluate opportunities for district success and celebrate student's educational achievements
- Identify and meet government needs and create continued transparency and stakeholder trust
- Ensure alignment with all Board of Trustees' priorities with an emphasis on Catholicity

# Calgary Catholic School District Jurisdiction

Map 1: CCSD Jurisdiction Map



CCSD's jurisdiction is incredibly diverse socially and geographically, serving:

- Metropolitan areas of Calgary
- Urban areas of Airdrie, Chestermere and Cochrane
- Regional areas of Rocky View County (including Crossfield, Irricana, Langdon, Redwood Meadows and Bragg Creek)
- Areas in the M.D. of Bighorn

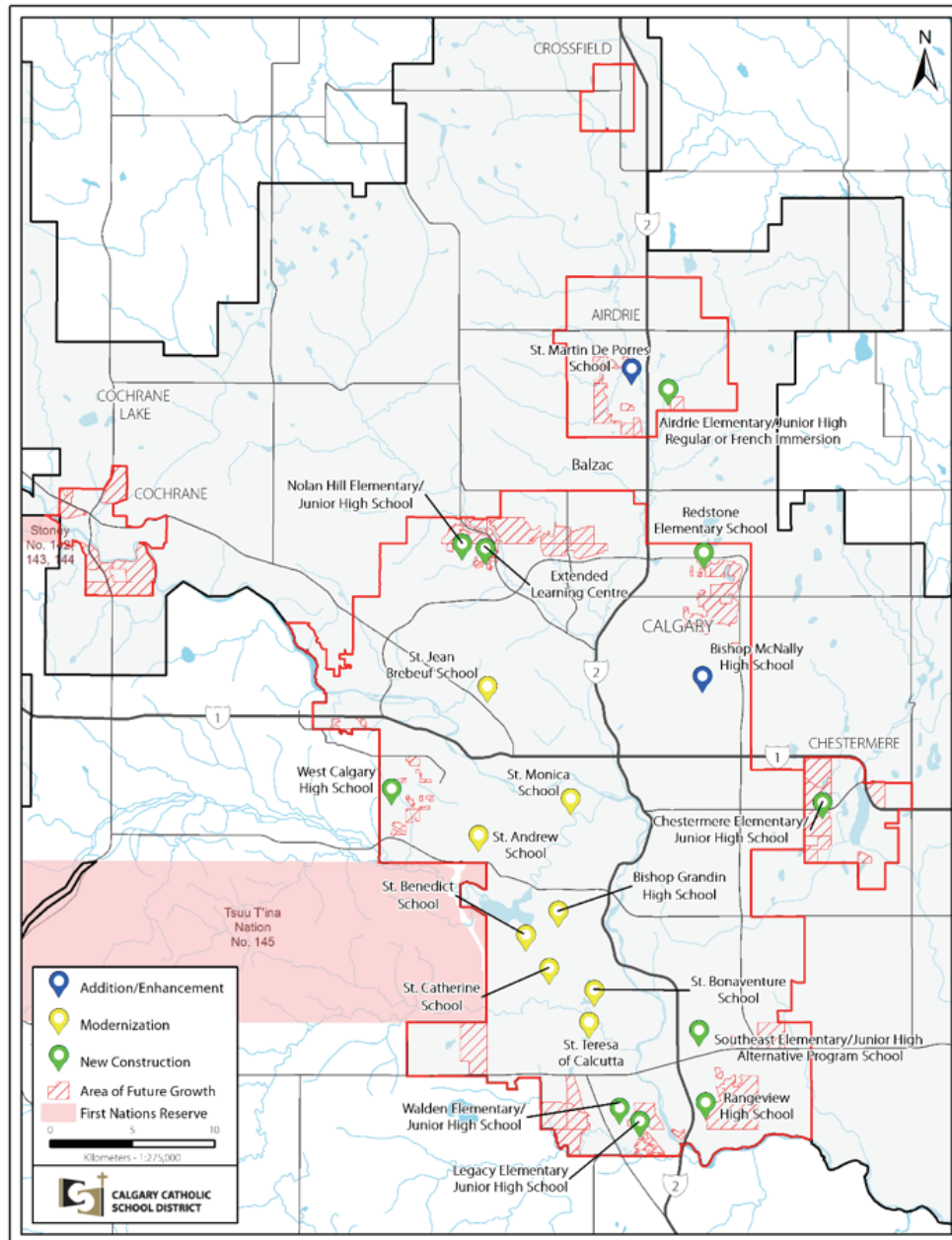
## CCSD 2021–2024 Capital Plan Priorities (March 25, 2020)

Capital Plan Year	High Schools - Addition, Enhancement and Modernization	New Construction Elementary/ Junior High	New Construction Elementary	New Construction High School	Modernization and Special Education Program	Project Year Total Cost
<b>Year 1</b>	<b>1</b> St. Martin de Porres*	<b>2</b> Legacy EL/JH  <b>4</b> Nolan Hill EL/JH  <b>5</b> Walden EL/JH	<b>3</b> Redstone EL	<b>6</b> West Calgary HS	<b>7</b> St. Bonaventure EL/JH  <b>8</b> St. Benedict EL	<b>\$199,800,000*</b>
<b>Year 2</b>		<b>9</b> Chestermere EL/JH  <b>12</b> Southeast Alternative EL/JH		<b>10</b> Extended Learning Centre  <b>11</b> Rangeview HS	<b>13</b> Bishop Grandin HS  <b>14</b> St. Teresa of Calcutta EL  <b>15</b> St. Catherine EL	<b>\$145,600,000</b>
<b>Year 3</b>	<b>17</b> Bishop McNally	<b>16</b> Airdrie French Immersion EL/JH			<b>18</b> St. Jean Brebeuf JH  <b>19</b> St. Monica EL/JH  <b>20</b> St. Andrew EL	<b>\$44,900,000</b>

\* Project Cost for Year 1 priorities may increase by \$20Mil depending on the option approved

# New School Construction and Modernizations Map

Map 2: CCSD 2021–2024 Capital Priorities



## Future Considerations

- New growth communities: **South Mahogany, Livingston, Carrington, Cornerstone and Cityscape are all currently being monitored for community growth.**
- Other new communities on the radar: Belmont, Yorkville, Pine Creek and Wolf Willow
- Area Structure Plans (ASP) being monitored include: Glacier Ridge (North), Keystone (North Central), Belvedere (East), West View (West), Rangeview (South East), Providence (South West), Chestermere (Waterbridge Master Area Structure Plan), Rocky View County plans and Airdrie (West Hills and Davy Creek)