

Alberta This plan may not be commercially re-distributed, transferred or manipulated in any form without the specific written consent of Alberta Land Titles



LAND TITLES OFFICE

PLAN NO. 2110302

ENTERED AND REGISTERED

ON February 12, 2021

INSTRUMENT NO. 211 037 003

A. Gelling  
A.D. REGISTRAR

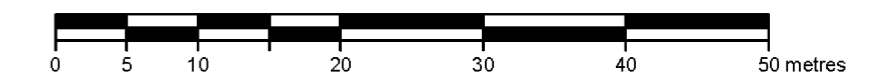
**PLAN SHOWING SURVEY OF AREA FOR ROAD CLOSURE PURPOSES**

AFFECTING  
**ROAD PLAN 091 3088**

WITHIN THE  
**N.W.1/4 Sec. 22, Twp. 24, Rge. 1, W.5M**

**CALGARY, ALBERTA 2020**

SCALE: 1:500



**LEGEND**

The following symbols may appear on this plan:  
 Statutory iron posts are shown thus: . . . . . Found ● Placed ○ and marked 946  
 Iron bars are shown thus: . . . . . Found ◆  
 Auxiliary monuments are shown thus: . . . . . Found ■ Placed □  
 Temporary survey points are shown thus: . . . . . X  
 Alberta Survey Control Markers found shown thus: . . . . . RP  
 Geo-reference point shown thus: . . . . . RP  
 GNSS derived grid coordinates of the Geo-reference point: 5658866.49 m N  
 -4717.81 m E  
 Area to be registered contains 0.021 ha and shown outlined thus: \_\_\_\_\_

**NOTES**

Distances are in metres and decimals thereof  
 Bearings are grid bearings and are derived from GNSS observations at ASCM 311787  
 Datum: NAD83 (Original)  
 Projection: 3TM  
 Reference Meridian: 114° West  
 Combined Scale Factor: 0.999733

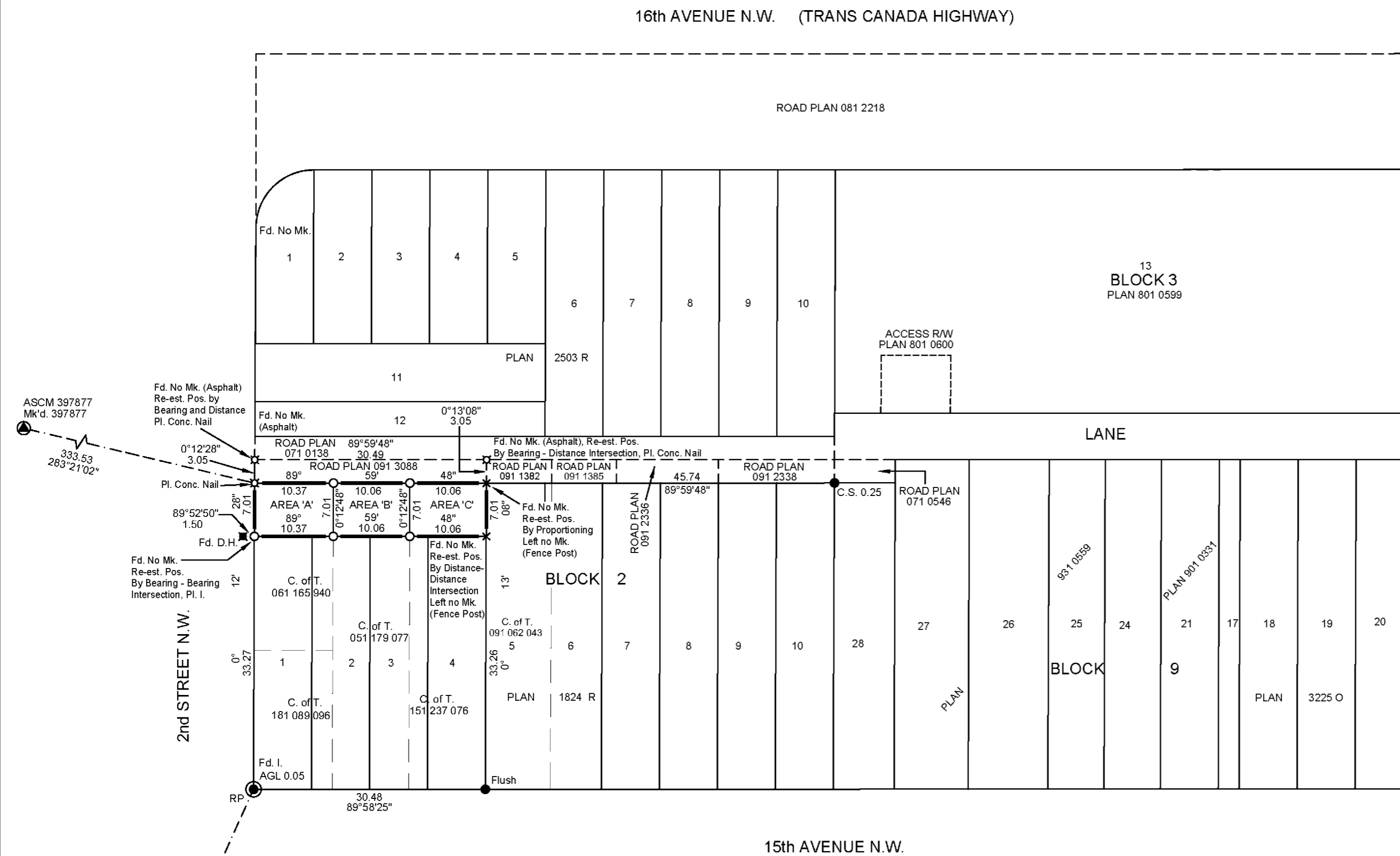
**ABBREVIATIONS**

The following abbreviations may appear on this plan:

A . . . . . Arc Length	MR . . . . . Municipal Reserve
AGL . . . . . Above Ground Level	MSR . . . . . Municipal and School Reserve
ARAW . . . . . Access Right-of-Way	N . . . . . North
A.L.S. . . . . Alberta Land Surveyor	NAD83 . . . . . North American Datum of 1983
ASCM . . . . . Alberta Survey Control Marker	ODRW . . . . . Overland Drainage Right-of-Way
C. of T. . . . . Certificate of Title	P/L . . . . . Property Line
C.S. . . . . Countersunk	Pl. . . . . Placed
Calc. . . . . Calculated	Pos. . . . . Position
CB . . . . . Chord Bearing	PUL . . . . . Public Utility Lot
CD . . . . . Chord Distance	R . . . . . Radius or Radial
Ck. m. . . . . Check Measured	Re-est. . . . . Re-established
Conc. . . . . Concrete	Ref. . . . . Reference
D.H. . . . . Drill Hole	Res. . . . . Restored
E. . . . . East	RP . . . . . Geo-reference Point
ER . . . . . Environmental Reserve	Rge. . . . . Range
Est. . . . . Established	R/W . . . . . Right-of-Way
Fd. . . . . Found	S. . . . . South
GNSS . . . . . Global Navigation Satellite System	Sec. . . . . Section
ha . . . . . Hectare	3TM . . . . . 3° Transverse Mercator
I. . . . . Iron Post	Twp. . . . . Township
L.S.D. . . . . Legal Subdivision	TUC . . . . . Transportation Utility Corridor
M. . . . . Mound or Meridian	UR/W . . . . . Utility Right-of-Way
Mk. . . . . Marked	W. . . . . West
Mkd. . . . . Marked	△ . . . . . Central Angle of Curve
Mp. . . . . Marker Post	

**SCHEDULE OF AREAS**

Area 'A' within Plan 091 3088	= 0.007 ha (0.02 acres)
Area 'B' within Plan 091 3088	= 0.007 ha (0.02 acres)
Area 'C' within Plan 091 3088	= 0.007 ha (0.02 acres)
<b>Total</b>	<b>= 0.021 ha (0.06 acres)</b>



**SURVEYOR**

**STEVE MEEHAN, A.L.S.**

Surveyed between the dates of June 9, 2020 and January 27, 2021 in accordance with the provisions of the Surveys Act.

**PLAN REQUESTED BY**

THE CITY OF CALGARY  
File Number: MPL2020-0052

**THE CITY OF CALGARY**

Field Surveying Services Division  
800 Macleod Trail SE, Calgary, AB T2P 2M5

Date: February-04-2021	Surveyed by: GK
File No.: 1205735	Drawn by: CK
Drawing Name: 1205735-RC.dwg	Checked: SM