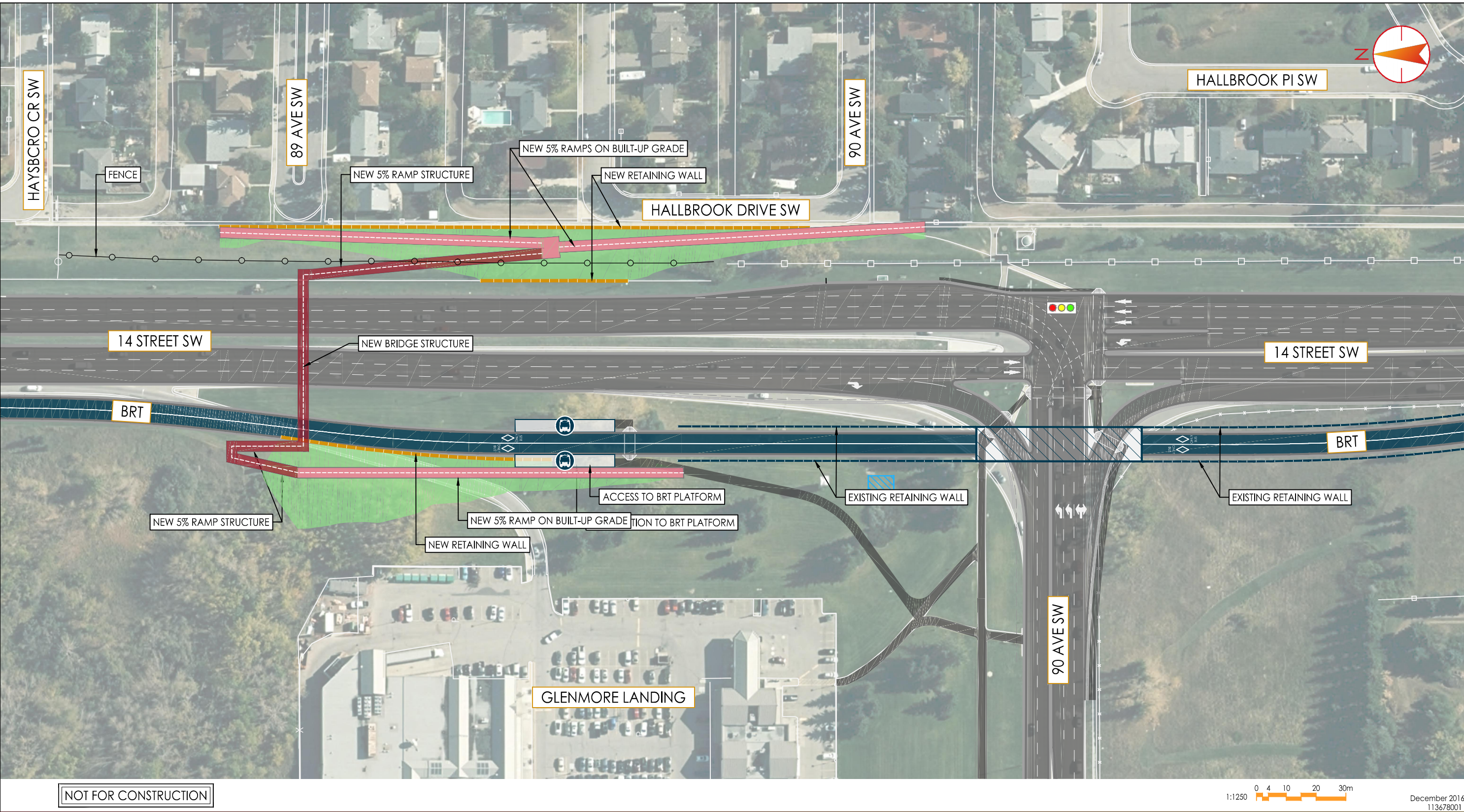


PROPOSED URGENT BUSINESS

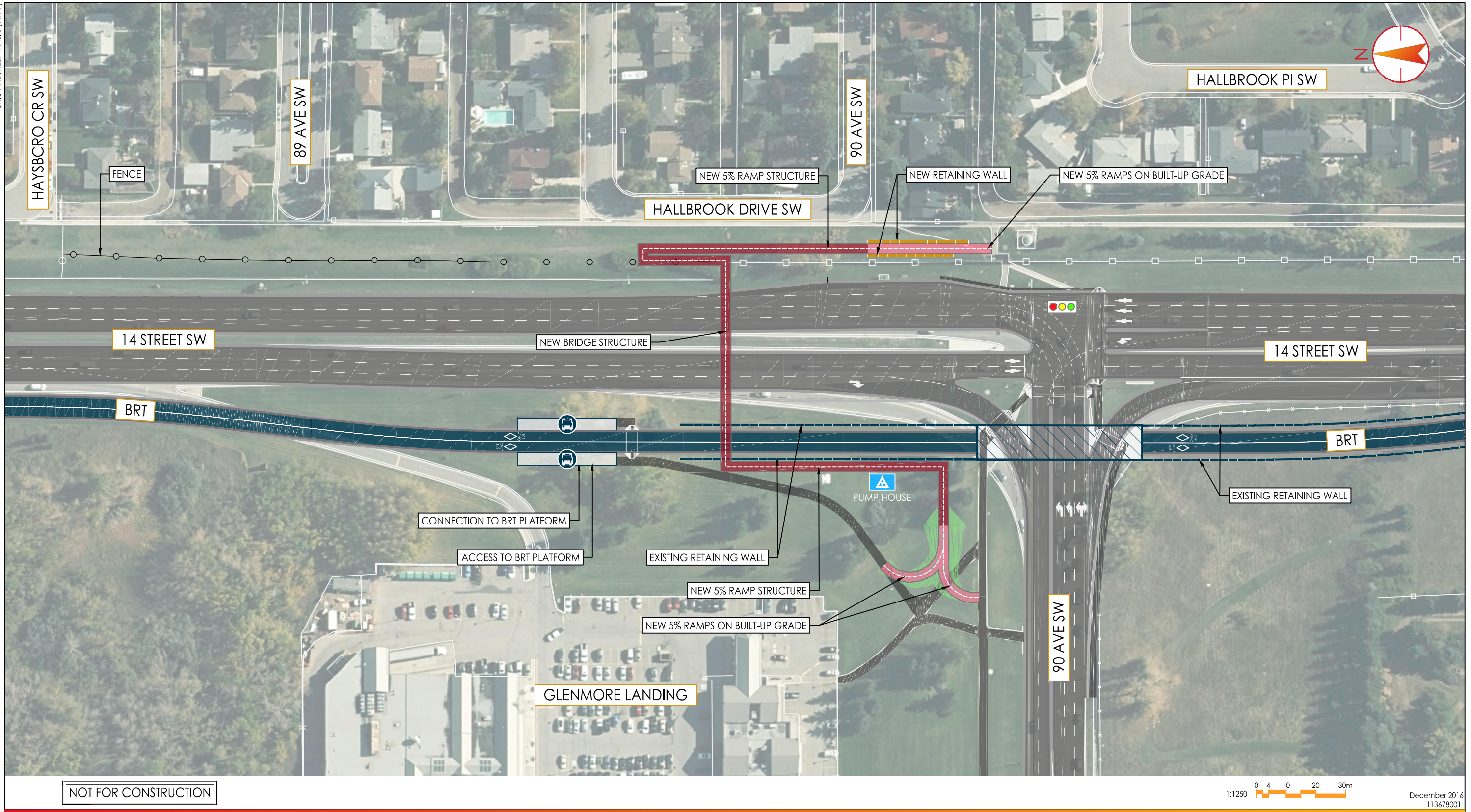
ORIGINAL SHEET - ANSI B (11x17)
 TT2017-0012 14 Street & 90 Avenue S.W. Pedestrian Overpass Alt-1.pdf
 ISC: Unrestricted
 U:\113678001\transportation\07_cad\sheet_files\93\93_open_house\house\1012017\1012017_option_1_ped_bridge_option_1.dwg
 2016/12/09 2:10 PM By: Wu, Louise



Proposed Alignments of Pedestrian Overpass

PROPOSED URGENT BUSINESS

ORIGINAL SHEET - ANSI B (11x17)
 TT2017-0012 14 Street & 90 Avenue S.W. Pedestrian Overpass Alt-1.pdf
 ISC: Unrestricted
 U:\113678001\transportation\07_cad\sheet_files\93_open_house\2017_01_20_14st_90ave_ped_bridg_option_2_dia.ctb
 2016/12/09 2:11 PM By: Wu, Louise



NOT FOR CONSTRUCTION

1:1250 0 4 10 20 30m December 2016 113678001

Proposed Alignments of Pedestrian Overpass



200-325 25th Street SE
 Calgary AB
 www.stantec.com

Client/Project
 THE CITY OF CALGARY

Figure No.
 SK-078

Title
 OPTION 2

