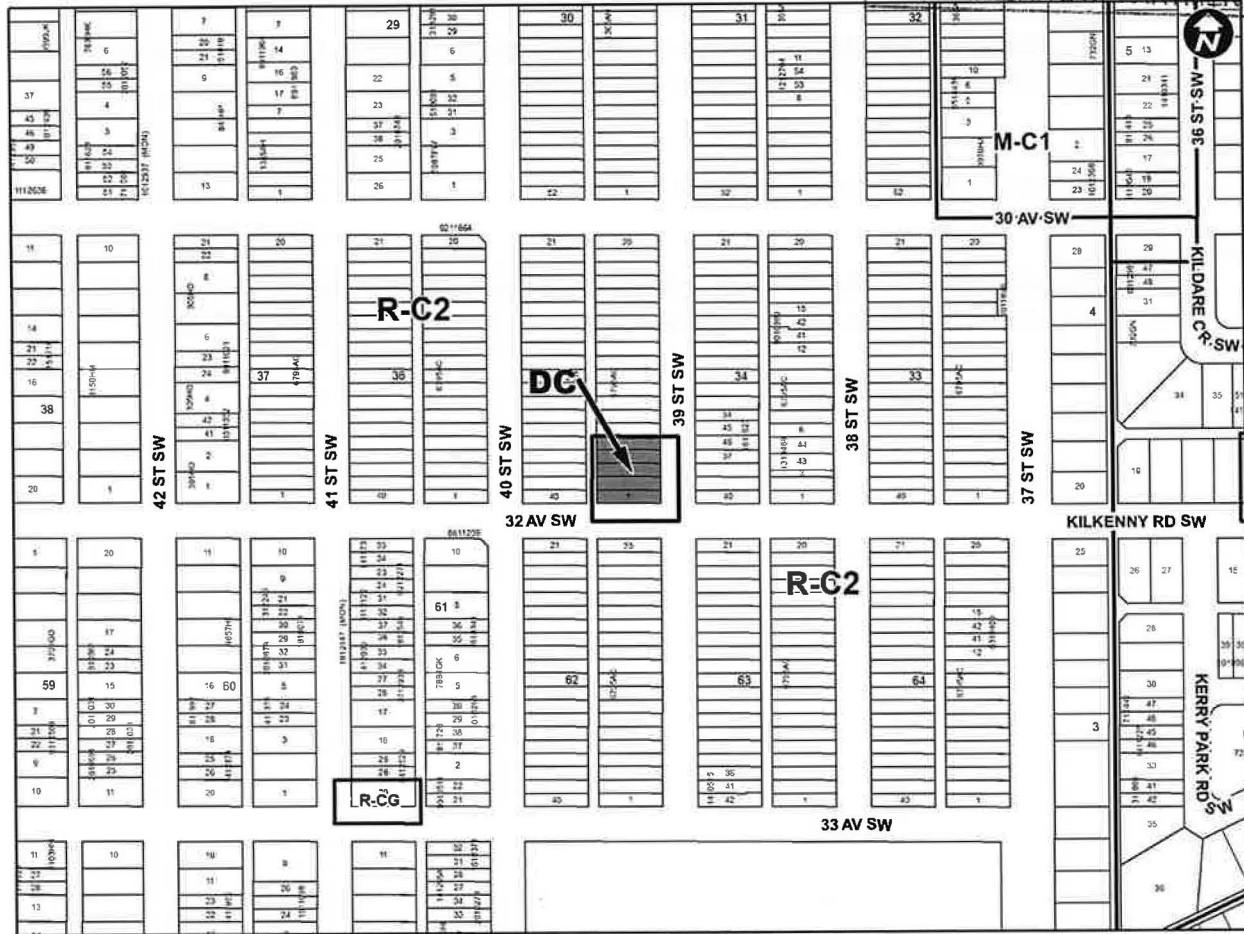


JAN 18 2021

ITEM: 8.1.1 CPC2020-1278
DISTRIBUTION
CITY CLERK'S DEPARTMENT

SCHEDULE B



DIRECT CONTROL DISTRICT GUIDELINES

Purpose

- 1 This Direct Control District Bylaw is intended to allow for up to 7 units a in variety of low density housing forms, excluding secondary and backyard suites.

Compliance with Bylaw 1P2007

- 2 Unless otherwise specified, the rules and provisions of Parts 1, 2, 3 and 4 of Bylaw 1P2007 apply to this Direct Control District Bylaw.

Reference to Bylaw 1P2007

- 3 Within this Direct Control District Bylaw, a reference to a section of Bylaw 1P2007 is deemed to be a reference to the section as amended from time to time.

Permitted Uses

- 4 The **permitted uses** of the Residential – Grade-Oriented Infill (R-CGex) District of Bylaw 1P2007 are the **permitted uses** in this Direct Control District.

Discretionary Uses

- 5 The ***discretionary uses*** of the Residential – Grade-Oriented Infill (R-CGex) District of Bylaw 1P2007 are the ***discretionary uses*** in this Direct Control District.

Bylaw 1P2007 District Rules

- 6 Unless otherwise specified, the rules of the Residential – Grade-Oriented Infill (R-CGex) District of Bylaw 1P2007 apply in this Direct Control District.

Density

- 7 The maximum ***density*** is 52 units per hectare.

Relaxations

- 8 The ***Development Authority*** may relax the rules contained in Sections 6 of this Direct Control District Bylaw in accordance with Sections 31 and 36 of Bylaw 1P2007.