

Development Permit (DP2020-5446) Summary

A development permit application (DP2020-5446) has been submitted by Formed Alliance Architecture Studio on 2020 August 31. The development permit application is for an 11 unit, three storey, grade-oriented rowhouse style Multi-Residential Development, including six on-site motor vehicle stalls accessed from the lane. These 11 units will be composed of six three bedroom units and five “micro units”: one bedroom units of less than 45.0 square metres which, as per the proposed DC, qualify for zero parking. The following excerpts (Figures 1 & 2) from the development submission provide an overview of the proposal and are included for information purposes only.

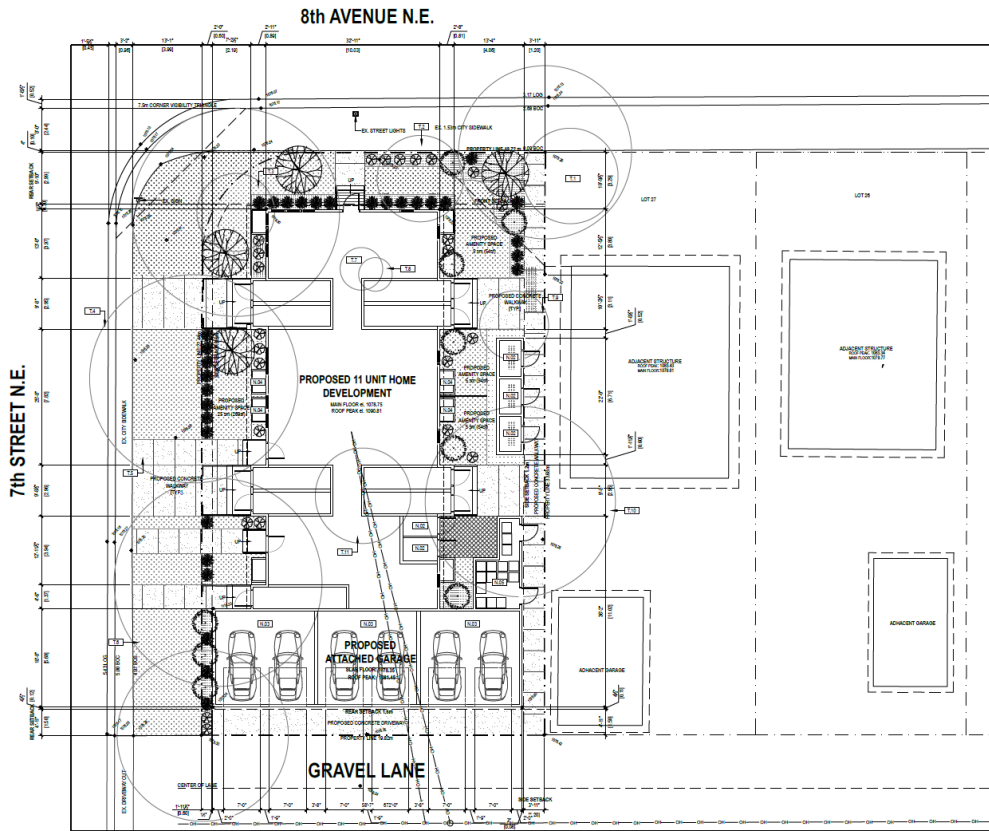
The first detailed team review for the development permit was issued on 2020 October 06. Administration is still working with the development permit applicant to address the technical review and design comments.

Figure 1: Rendering of proposed development (view from corner of 8 Avenue and 7 Street NE)



Development Permit (DP2020-5446) Summary

Figure 2: Landscape Plan



SHEET NOTES

- EXISTING SITE ELEVATION
- PROPOSED SITE ELEVATION
- MULCH
- WATER-RECYCLED MULCH
- LANDSCAPE MATERIAL
- LANDSCAPE MATERIAL
- LANDSCAPE MATERIAL
- LANDSCAPE MATERIAL

GENERAL NOTES

- A. ALL LANDSCAPING MATERIALS AND PLANTINGS TO BE INSTALLED WITHIN CHIMNEY DEVELOPMENT PERMITS.
- B. REFER TO LANDSCAPE PLAN FOR ALL PLANTING AND SPECIFICATIONS FOR MATERIALS AND PLANTINGS.
- C. REFER TO PLANTING PLAN FOR ALL PLANTING AND SPECIFICATIONS FOR MATERIALS AND PLANTINGS.
- D. ALL LANDSCAPING MATERIALS AND PLANTINGS TO BE INSTALLED WITHIN CHIMNEY DEVELOPMENT PERMITS.

LANDSCAPE INFORMATION

MINIMUM 1.5 TREES REQUIRED PER UNIT, 15% TREE COVER PER UNIT
PROPOSED 1.5 TREES AND 15% TREES PER UNIT

| EXISTING TREES | TYPE | DBH | HT | SPR | WTR |
|----------------|------|-----|----|-----|-------|
| 1 | TR | 4.0 | 15 | 0.0 | 0.000 |
| 2 | TR | 4.0 | 15 | 0.0 | 0.000 |
| 3 | TR | 4.0 | 15 | 0.0 | 0.000 |
| 4 | TR | 4.0 | 15 | 0.0 | 0.000 |
| 5 | TR | 4.0 | 15 | 0.0 | 0.000 |
| 6 | TR | 4.0 | 15 | 0.0 | 0.000 |
| 7 | TR | 4.0 | 15 | 0.0 | 0.000 |
| 8 | TR | 4.0 | 15 | 0.0 | 0.000 |
| 9 | TR | 4.0 | 15 | 0.0 | 0.000 |
| 10 | TR | 4.0 | 15 | 0.0 | 0.000 |
| 11 | TR | 4.0 | 15 | 0.0 | 0.000 |
| 12 | TR | 4.0 | 15 | 0.0 | 0.000 |
| 13 | TR | 4.0 | 15 | 0.0 | 0.000 |
| 14 | TR | 4.0 | 15 | 0.0 | 0.000 |
| 15 | TR | 4.0 | 15 | 0.0 | 0.000 |

| PROPOSED PLANTINGS | SYMBOL | QUANTITY | PLANT | HT | SPR | WTR |
|--------------------|--------|----------|-------|----|-----|-----|
| 1 | | 1 | PLANT | HT | SPR | WTR |
| 2 | | 1 | PLANT | HT | SPR | WTR |
| 3 | | 1 | PLANT | HT | SPR | WTR |
| 4 | | 1 | PLANT | HT | SPR | WTR |
| 5 | | 1 | PLANT | HT | SPR | WTR |
| 6 | | 1 | PLANT | HT | SPR | WTR |
| 7 | | 1 | PLANT | HT | SPR | WTR |
| 8 | | 1 | PLANT | HT | SPR | WTR |
| 9 | | 1 | PLANT | HT | SPR | WTR |
| 10 | | 1 | PLANT | HT | SPR | WTR |
| 11 | | 1 | PLANT | HT | SPR | WTR |
| 12 | | 1 | PLANT | HT | SPR | WTR |
| 13 | | 1 | PLANT | HT | SPR | WTR |
| 14 | | 1 | PLANT | HT | SPR | WTR |
| 15 | | 1 | PLANT | HT | SPR | WTR |

LANDSCAPING LEGEND

| | |
|--|-------------|
| | DESCRIPTION |
| | DESCRIPTION |
| | DESCRIPTION |
| | DESCRIPTION |
| | DESCRIPTION |

SITE PLAN
DP-110