

The word "Calgary" in white sans-serif font on a red rectangular background.A nighttime photograph of a city street. In the background, a large, ornate clock tower is illuminated with warm lights. To the left, a modern street light fixture is lit up. The sky is dark, and other city lights are visible in the distance.

Calgary Planning Commission

June 16, 2020

Chair: Matthias Tita, Director, Calgary Growth Strategies

Vice Chair: Ryan Vanderputten, Director, Transportation Planning



Calgary Planning Commission:

- Makes recommendations to Council on land use and policy items (technical review)
- Makes decisions on major subdivision and development proposals
- Responds to planning related requests from Council
- 109 years of history

PLANNING
COMMISSION



1911 * 2011

A CENTURY OF
VISION



Members

6 citizen members

At least one Citizen at Large

Expertise from Urban Planning, Urban Design, Real Estate Development, Landscape Architecture, Home Building, Architecture

PLANNING
COMMISSION



1911 * 2011

A CENTURY OF
VISION

2 Councillors

2 members of administration

The Mayor, ex-officio



Current Members

- **Heather Cameron** - cbstudio architecture inc
- **Councillor George Chahal**
- **Paul Gedye** - GWL Realty Advisors
- **Lourdes Juan** - Hive Developments
- **Andrew Palmiere** - o2 Planning + Design Inc
- **Kelly Schmalz** - Genstar
- **James Scott** - PBA Land Development
- **Matthias Tita** (Chair), City of Calgary
- **Ryan Vanderputten** (Vice-Chair), City of Calgary
- **Councillor Evan Woolley**

PLANNING
COMMISSION



1911 ✦ 2011

A CENTURY OF
VISION



2018 and 2019 Activities

	2018	2019
Meetings	23	23
Reports	337	305
Recommendations to Council	277	242
Development Permit decisions	21	19
Outline Plan decisions	24	30
Other items	15	-

PLANNING
COMMISSION



1911 * 2011

1 CENTURY OF
VISION

Professional Development Activities

- Land Acknowledgement Workshop
- Accessibility Tour
- Bus Tour with Urban Design Review Panel
- Introduction to the Next Generation Planning System
- CPC/Council discussion to understand how CPC comments/recommendations are valued
- External Effectiveness Assessment

PLANNING
COMMISSION



1911 ✦ 2011

A CENTURY OF
VISION

Fall 2019 Bus Tour – YW Hub



PLANNING
COMMISSION



1911 ✪ 2011

A CENTURY OF
VISION



Fall 2019 Bus Tour – YW Hub



PLANNING
COMMISSION



1911  2011

A CENTURY OF
VISION



Fall 2019 Bus Tour - RNDSQR

ALTADORE 50



NORTH GLENMORE 20



PLANNING
COMMISSION



1911  2011

A CENTURY OF
VISION

Fall 2019 Bus Tour – Westman Village



PLANNING
COMMISSION

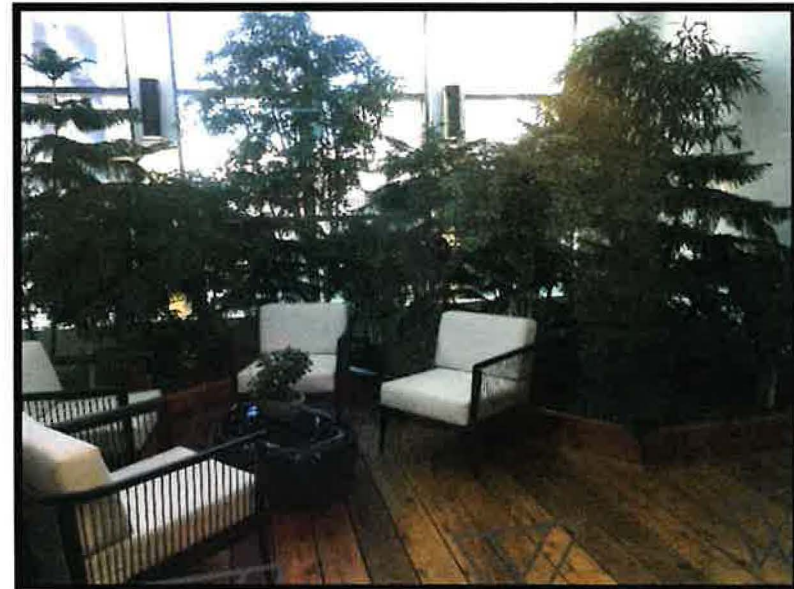


1911 * 2011

A CENTURY OF
VISION



Fall 2019 Bus Tour – Westman Village





Riverwalk Senior Living, March 21



PLANNING
COMMISSION



1911 * 2011

A CENTURY OF
VISION



Hat @ Elbow River, April 18



PLANNING
COMMISSION



1911  2011

A CENTURY OF
VISION

Symons Valley Farmers' Market Site, March 21

PLANNING COMMISSION



1911 2011

A CENTURY OF VISION



Outlining Plan Statistics:

Site Area	812.59 ha	200.52 ac
17 Street Land / Private	10.22 ha	25.57 ac
Gross Developable	112.31 ha	277.19 ac

Less Head Working:		
Symons Valley Road	27.55 ha	68.11 ac
16A Avenue NW	20.23 ha	50.43 ac
Not Developable	12.37 ha	30.75 ac

Road/Util

18 M2 (only Density Medium Road)	42.84 ha	105.78 ac	19.6%
----------------------------------	----------	-----------	-------

Commercial

DC (C-C2) Site 1	12.61 ha	31.45 ac	20.7%
DC (C-C2) Site 3A	21.50 ha	53.71 ac	17.5%
DC (C-C2) Site 3B	11.50 ha	28.54 ac	11.2%
DC (C-COR2) Site 2A	11.72 ha	29.14 ac	7.7%
DC (C-COR2) Site 2B	11.33 ha	28.55 ac	8.2%

Park / Open Space

S-DPA	11.26 ha	28.11 ac	10.0%
-------	----------	----------	-------

Roads

Asphalt (144th Ave NW)	10.13 ha	25.32 ac	1.2%
Local Arterial (32 M ROW)	10.06 ha	25.15 ac	1.3%
Activity Center (26 M ROW)	10.84 ha	27.09 ac	0.1%
Collector (5.2 ROW)	10.16 ha	25.15 ac	0.1%
Total	112.51 ha	281.16 ac	100%

Residential Density/Intensity:

M-H2	12.34 ha (15.75 ac)	
4-15 (based Density)	901	= 280.3 jobs (155.4 jobs)
DC (C-COR2) Site 2A	10.72 ha (26.86 ac)	
Anticipated Density	195	= 215.2 jobs (187.0 jobs)
DC (C-COR2) Site 2B	11.02 ha (27.55 ac)	
Anticipated Density	233	= 226.2 jobs (191.3 jobs)
DC (C-C2) Site 1B	11.08 ha (27.55 ac)	
Anticipated Density	285	= 147.4 jobs (59.7 jobs)

Land Use	Total Area	Anticipated Jobs	Intensity Ratio	Anticipated Employment
100/ha	26.55 ha	2655	1:100	2655

Total Site Residential Density

Total Area	112.51 ha	1188 jobs	10.57 jobs/ha	11.77 jobs/ac
------------	-----------	-----------	---------------	---------------

Job Intensity:

Land Use	Intensity	Program Density	Intensity Ratio	Employment
100/ha	100 jobs/ha	100 jobs/ha	1:100	1000
Total	1370 jobs/ha	1370 jobs/ha	1:1370	1370

Anticipated Combined Intensity:

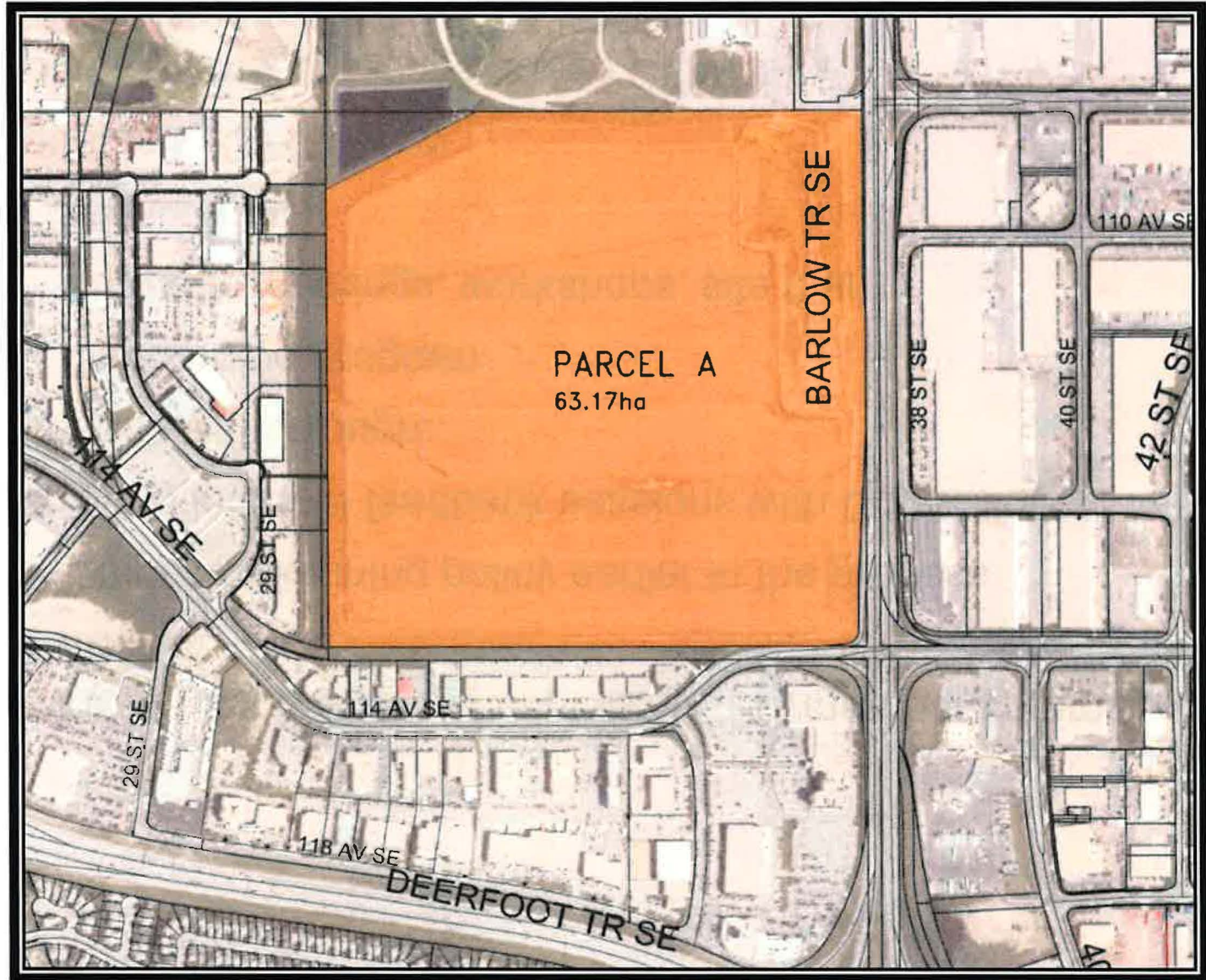
Anticipated Combined Intensity	285 jobs/ha	285 jobs/ha	1:285	2850
--------------------------------	-------------	-------------	-------	------

Land Use Statistics

Land Use to be Reassessed		
DC 100/ha to M-H2	12.34 ha	15.75 ac
DC 100/ha to DC (C-C2)	65.52 ha	163.74 ac
DC 100/ha to DC (C-COR2)	42.37 ha	105.65 ac
DC 100/ha to S-DPA	11.26 ha	28.11 ac
Total	131.49 ha	333.25 ac

Preliminary - Subject to Revision

DP Energy Solar Farm – Feb 7



PLANNING
COMMISSION



1911  2011

A CENTURY OF
VISION

2020 Initiatives

- Improving the process of capturing CPC member comments for Council
- CPC input to planning policy earlier in the process
- Exploring informal feedback sessions with Councillors
- Support CPC through:
 - Onboarding program
 - Strategic meetings, workshops, site tours
 - Technology
- Updates to CPC Bylaw
- Move to virtual meetings due to COVID-19

PLANNING
COMMISSION



1911 ✦ 2011

A CENTURY OF
VISION

Calgary Planning Commission

Thank You!



PLANNING
COMMISSION



1911  2011

A CENTURY OF
VISION

CITY OF CALGARY
RECEIVED
IN COUNCIL CHAMBER

JUN 16 2020

ITEM: #11.22 C2020-0474
Public Distrib

CITY CLERK'S DEPARTMENT