



Cooperative Stormwater Management Initiative (CSMI)

IGA2020-1175

ISC: Unrestricted

Intergovernmental Affairs Committee

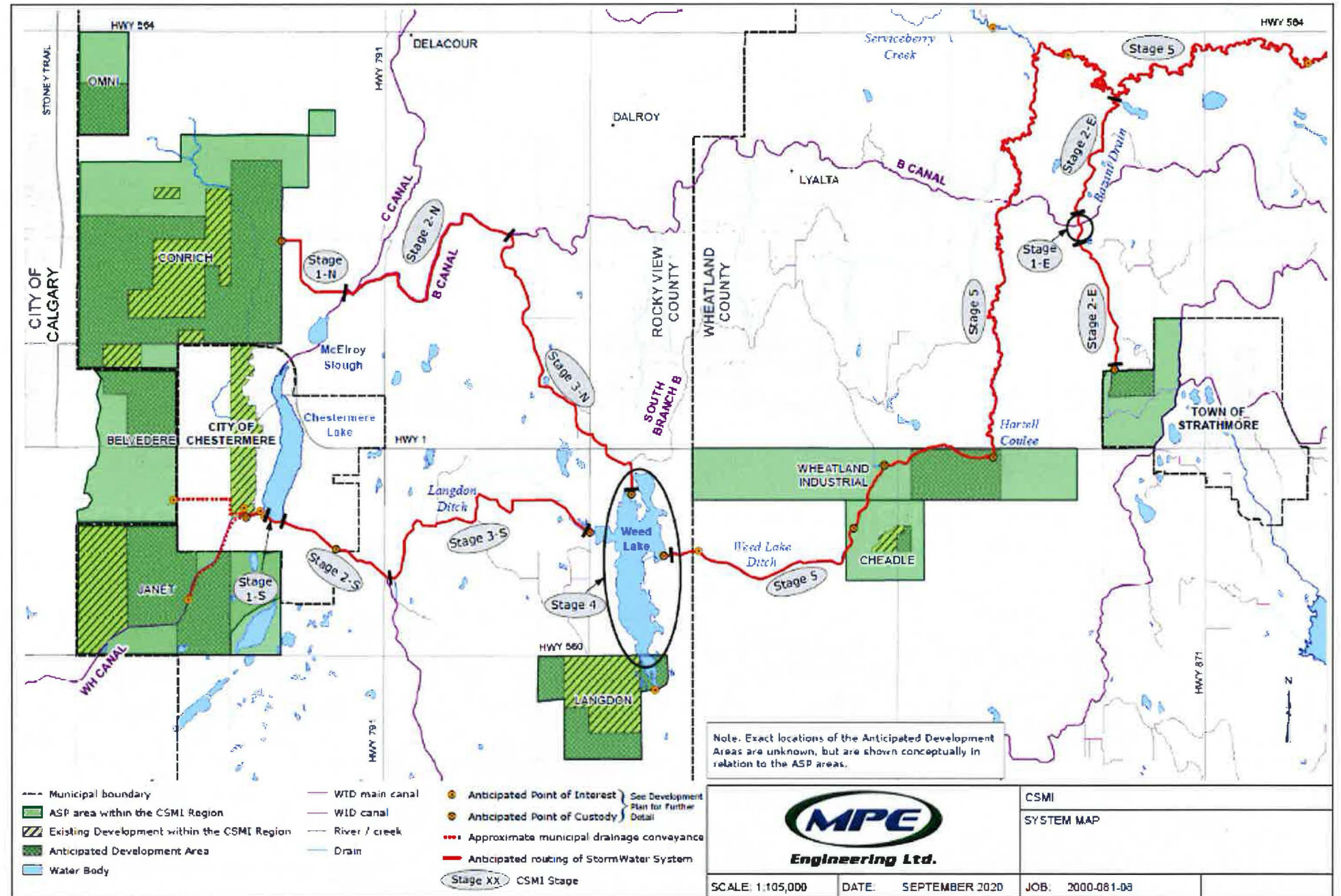
15 October 2020





CSMI will build and operate a shared regional stormwater system

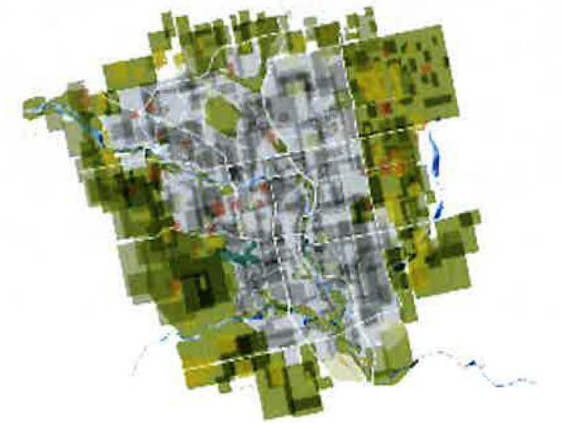
- Western Irrigation District
- Rocky View
- Calgary
- Wheatland
- Strathmore















Why is CSMI important?

1. Long term stormwater management solution in a difficult drainage area - for economic development, flood management and watershed health
2. Cost effective use of City stormwater rate and levy dollars in a regional project preferred over the Calgary-only alternative (using Forest Lawn Creek)
3. Greater flexibility and capacity in utility servicing for Calgary's future growth
4. Continued participation in a keenly watched, innovative regional collaboration (municipalities, WID, Province)



CSMI - Forest Lawn Creek comparison

	Creates sustainable stormwater management in problematic area	Creates level stormwater management playing field for developers	Supports regional collaboration and CMRB Growth Plan	Increases adaptive capacity of The City's stormwater system	Creates potential shared risk from regional activities
CSMI					
Forest Lawn Creek					



CSMI timeline

CSMI initiates as a regional approach to stormwater servicing

2012

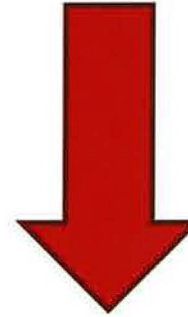


2018

CSMI participants sign Master Servicing Agreement

CSMI secures Provincial and Federal grants
Chestermere withdraws

2019



2020

CSMI partners formalize Cooperative
Construction starts

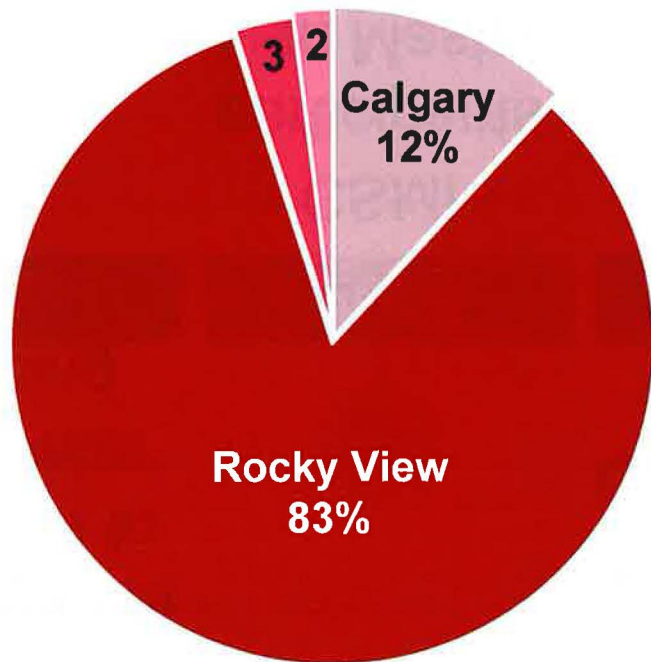
CSMI system constructed in stages to match development

2021-2043



CSMI: Four municipalities & the Western Irrigation District

CSMI proportional municipal contributions and benefits



- Calgary 12%
- Wheatland 3%

- Rocky View 83%
- Strathmore 2%

Total CSMI Project: \$90.3 M

Calgary CSMI contribution: \$9.9 M

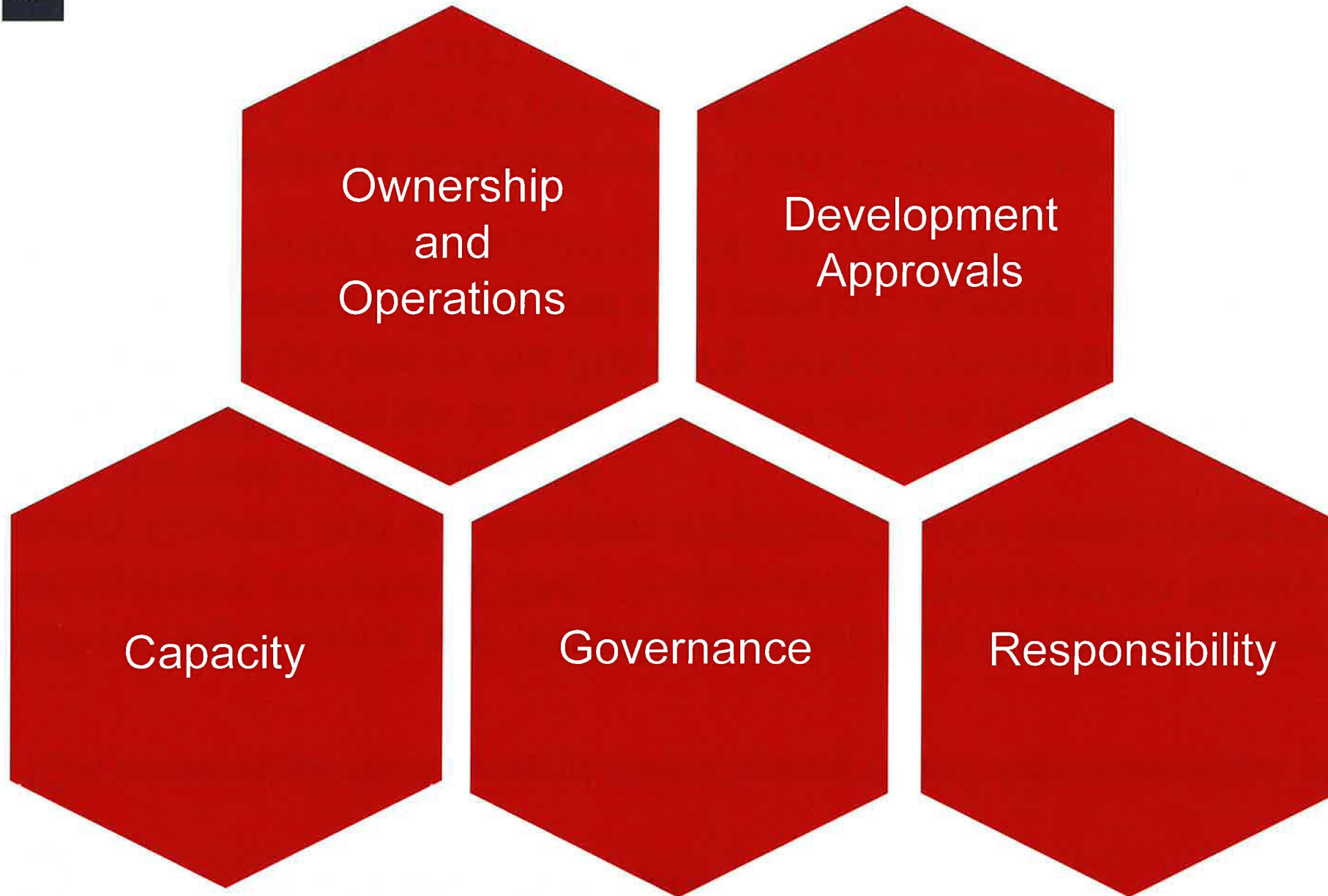


Calgary connection: \$10.0 M

To be recovered through off-site levies and stormwater rates



What does CSMI participation mean for The City?



RECOMMENDATION:

That the IGA committee recommend that Council direct Administration to:

1.
 - a) Finalize negotiations and formally enter into the Cooperative Stormwater Management Initiative (CSMI) Cooperative, contingent on Rocky View County Council and the Western Irrigation District Board doing the same, within the next 6 months; and
 - b) Provide CSMI updates as part of the annual Integrated Watershed Management Update to the Standing Policy Committee on Utilities and Corporate Services (UCS) and as a periodic regional update to the Intergovernmental Affairs Committee, as needed.
2. Direct that the contents of Attachments 3 and 4 remain confidential pursuant to Sections 16, 21, and 25 of the *Freedom of Information and Protection of Privacy Act*. Review By: 2021 October 15