

The following map and tables are excerpts from the CSMI Development Agreement (updated September 2020) prepared by the CSMI partnership. The map shows the CSMI region and construction stages.

The cash flow projections include proportional contributions from municipalities to implement the project and does not include operations and maintenance costs for the stormwater system.

The development budget outlines cost estimates for each stage of construction of the system.

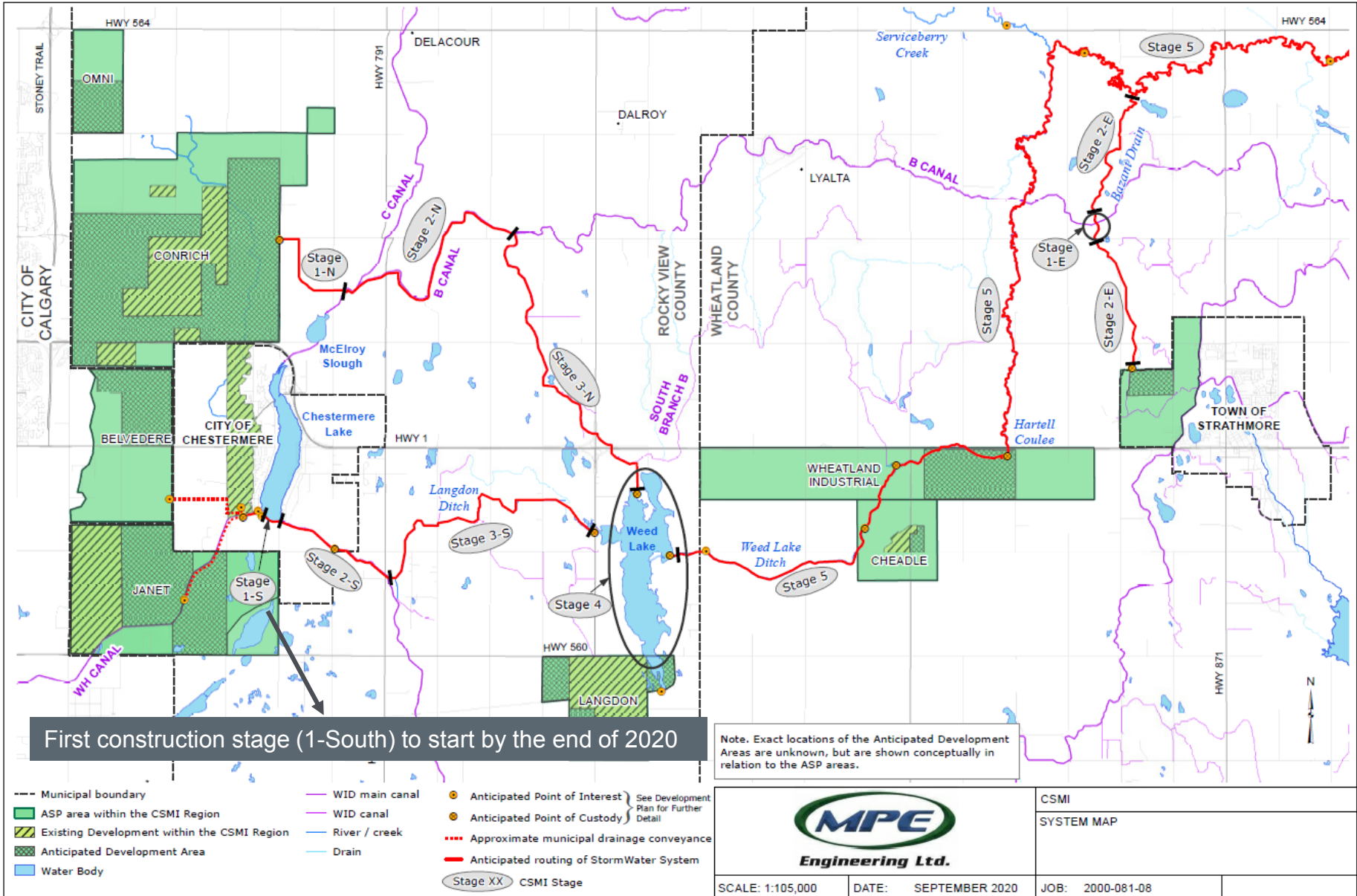
#### Notes:

- The CSMI system will be constructed in stages to match development. Stage 1-South is scheduled to begin by the end of 2020.
- Construction to serve Calgary's portion of CSMI is anticipated to begin around 2025.
- The CSMI system will eventually be separate from Western Irrigation District's (WID's) canal system.



# CSMI map and construction stages

Source: CSMI Development Agreement, September 2020





# CSMI cash flow projections including proportional municipal contributions

**Table 14: Cash Flow Projections**

Funding Source	2018	2019	2020	2021	2022	2022-2045	Total Cost
	Planning & Implementation (P&I) Only	P&I Only	Stage 1-S / Stage 1 Land / P&I	Stage 1-N / Stage 1-E / P&I	Stage 2-S	All other Stages / Rural Best Mgmt Practices / Low Impact Development Research	
Province (ACRP Grant) <sup>1</sup>	\$564,480	\$178,754	\$3,686,616	\$3,170,149			\$7,600,000
Canada (BCF Grant)			\$1,525,578	\$335,172		\$206,750	\$2,067,500
Province (ACP Grant)			\$200,000				\$200,000
Municipalities <sup>2</sup>	\$62,720	\$19,862	\$958,783	\$3,009,029	\$2,067,500	\$74,291,150	\$80,409,043
Chestermere (0%)	\$10,200	\$3,200	\$0	\$0	\$0	\$0	\$13,400
Rocky View (83.5%)	\$44,800	\$14,200	\$800,800	\$2,513,300	\$1,726,900	\$62,051,400	\$67,151,400
Wheatland (2.7%)	\$1,500	\$500	\$25,400	\$79,600	\$54,700	\$1,964,900	\$2,126,600
Strathmore (1.5%)	\$900	\$300	\$14,700	\$46,200	\$31,700	\$1,139,500	\$1,233,300
<b>Total</b>	<b>\$627,200</b>	<b>\$198,616</b>	<b>\$6,370,977</b>	<b>\$6,514,350</b>	<b>\$2,067,500</b>	<b>\$74,497,900</b>	<b>\$90,276,543</b>

1) ACRP grant covers 90% of first \$3,000,000 spent, then 70% until grant is spent

2) 2018 and 2019 municipality costs are based on Percentages in those years

Source: CSMI Development Agreement, September 2020

Note: An additional \$10M capital is required by The City of Calgary to connect to the CSMI system, and the timing of The City's investments will be determined by East Belvedere development.



**SCHEDULE “C”  
DEVELOPMENT BUDGET**

The following table outlines the estimate of Development Budget for each Stage of the StormWater System:

Stage	Cost <sup>1</sup>
Stage 1-S	\$6,068,000
Stage 1-N	\$6,074,000
Stage 1-E	\$390,000
Stage 2-S	\$6,094,000
Stage 2-N	\$10,824,000
Stage 3-N	\$10,823,000
Stage 2-E	\$723,000
Stage 3-S	\$11,819,000
Stage 4	\$4,998,000
Stage 5 Hartell	\$10,950,000
Stage 5 Serviceberry	\$3,070,000
Constructed wetlands	\$11,729,000
LID Research	\$2,000,000
Rural BMP's	\$3,391,000
Planning and Implementation	\$1,324,000
<b>Total</b>	<b>\$90,277,000</b>

*1: Costs rounded to the nearest thousand dollars*

*LID: Low Impact Development, BMPs: Best Management Practices*

Source: CSMI Development Agreement, September 2020