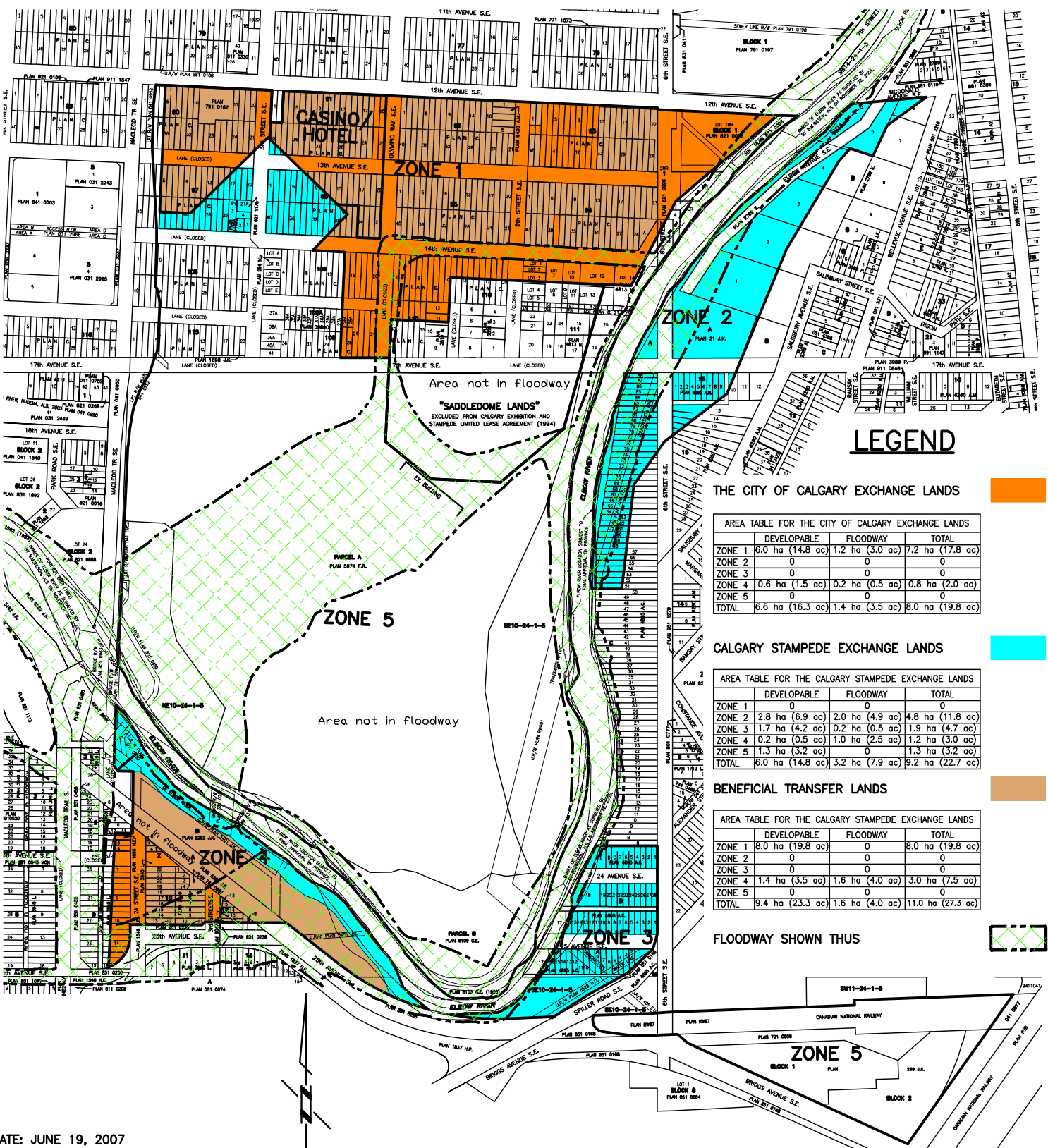


EXCHANGE LANDS



LEGEND

THE CITY OF CALGARY EXCHANGE LANDS

AREA TABLE FOR THE CITY OF CALGARY EXCHANGE LANDS			
	DEVELOPABLE	FLOODWAY	TOTAL
ZONE 1	6.0 ha (14.8 ac)	1.2 ha (3.0 ac)	7.2 ha (17.8 ac)
ZONE 2	0	0	0
ZONE 3	0	0	0
ZONE 4	0.6 ha (1.5 ac)	0.2 ha (0.5 ac)	0.8 ha (2.0 ac)
ZONE 5	0	0	0
TOTAL	6.6 ha (16.3 ac)	1.4 ha (3.5 ac)	8.0 ha (19.8 ac)

CALGARY STAMPEDE EXCHANGE LANDS

AREA TABLE FOR THE CALGARY STAMPEDE EXCHANGE LANDS			
	DEVELOPABLE	FLOODWAY	TOTAL
ZONE 1	0	0	0
ZONE 2	2.8 ha (6.9 ac)	2.0 ha (4.9 ac)	4.8 ha (11.8 ac)
ZONE 3	1.7 ha (4.2 ac)	0.2 ha (0.5 ac)	1.9 ha (4.7 ac)
ZONE 4	0.2 ha (0.5 ac)	1.0 ha (2.5 ac)	1.2 ha (3.0 ac)
ZONE 5	1.3 ha (3.2 ac)	0	1.3 ha (3.2 ac)
TOTAL	6.0 ha (14.8 ac)	3.2 ha (7.9 ac)	9.2 ha (22.7 ac)

BENEFICIAL TRANSFER LANDS

AREA TABLE FOR THE CALGARY STAMPEDE EXCHANGE LANDS			
	DEVELOPABLE	FLOODWAY	TOTAL
ZONE 1	8.0 ha (19.8 ac)	0	8.0 ha (19.8 ac)
ZONE 2	0	0	0
ZONE 3	0	0	0
ZONE 4	1.4 ha (3.5 ac)	1.6 ha (4.0 ac)	3.0 ha (7.5 ac)
ZONE 5	0	0	0
TOTAL	9.4 ha (23.3 ac)	1.6 ha (4.0 ac)	11.0 ha (27.3 ac)

FLOODWAY SHOWN THUS



DATE: JUNE 19, 2007
Maidment Land Surveys Ltd.
 Land Surveyors/Land Development Consultants
 17,4703 Bowness Road N.W. CALGARY, ALBERTA T3B 0B5
 Tel (403) 286-0501 FILE NO. 105356-
 Fax (403) 286-6632 transland